

THIS DRAWING IS UNPUBLISHED.

RELEASED FOR PUBLICATION

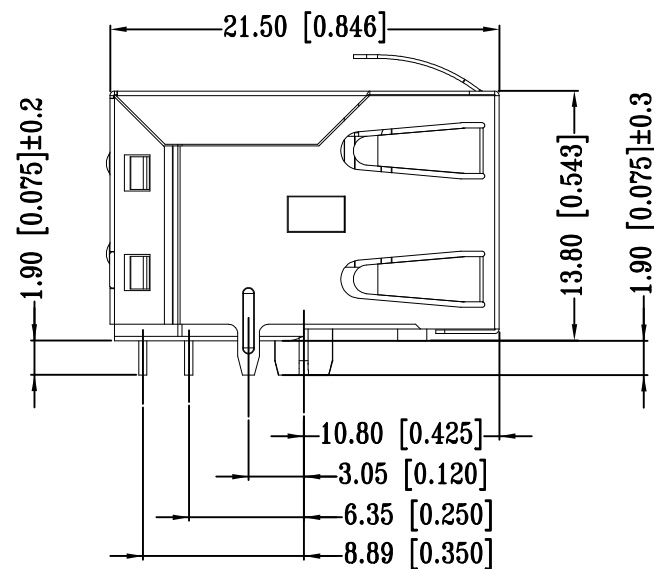
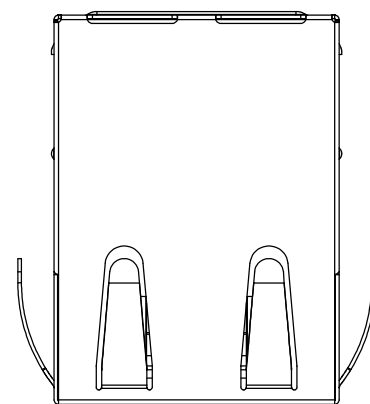
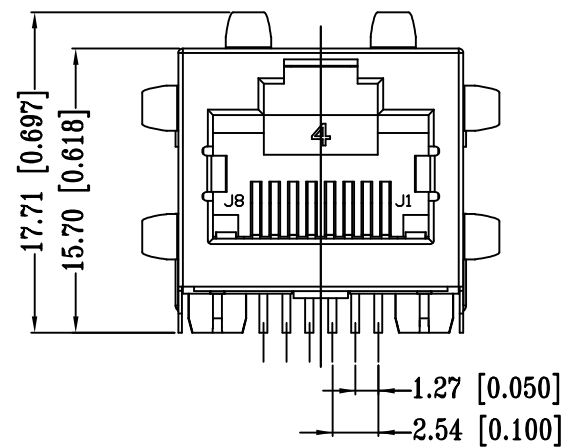
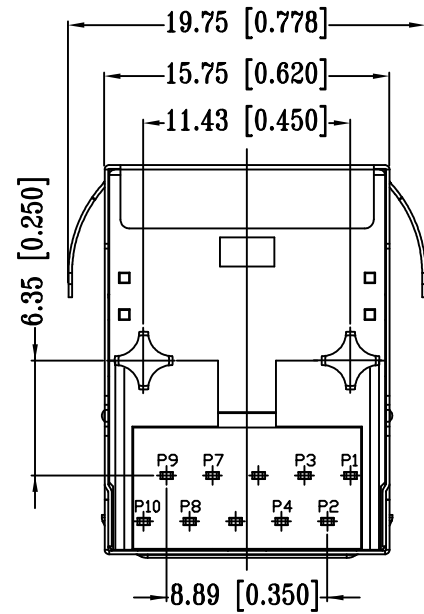
-,-

REVISIONS

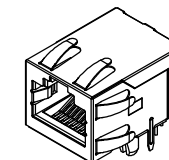
© COPYRIGHT - TE Connectivity Ltd.

ALL RIGHTS RESERVED.

P	LTR	DESCRIPTION	DATE	DWN	APVD
	A1	NEW RELEASE	15JAN2018	GCM	MSZ



- △ CONNECTOR MATERIAL:
HOUSING: LCP BLACK UL94 V-0
INSERT: LCP BLACK UL94 V-0
SHIELD: BRASS
SHIELD PLATING: NICKEL
CONTACT: COPPER ALLOY
CONTACT PLATING: SELECTIVE GOLD, MIN. 0.76 μm (30 μin) IN CONTACT AREA
OVER MIN. 1.27 μm (50 μinch) NICKEL
SOLDER PIN PLATING: 3.05 μm (120 μinch) TIN OVER 1.02 μm (40 μinch) NICKEL
OVER ALL
SHIELDING PIN PLATING: NICKEL
- 2 PIN NOT ELECTRICALLY CONNECTED MAYBE OMITTED SEE ELECTRICAL CIRCUIT DIAGRAM FOR OMITTED PINS
- 3 RJ45 CAVITIES CONFORM TO FCC RULES AND REGULATION PART 68.
- 4 THE PART IS RECOMMENDED FOR REFLOW SOLDERING PROCESS PEAK SOLDERING:
TEMPERATURE MAX. 260° C , MAX. 10 s
- 5 OPERATING TEMPERATURE T=-40° C TO +85° C.
- 6 STORAGE TEMPERATURE T=-40° C TO +85° C.
- △ UNLESS OTHERWISE SPECIFIED, SEE TABLE FOR ALL DIMENSIONS TOLERANCES
- 8 JACK CONFIGURATION: 1 x 1
TAB DIRECTION: UP
- 9 PACKAGING: TRAY ACCORDING TO PACKAGING SPECIFICATION 107-18116



1:1



TABLE OF TOLERANCE (mm)	
RANGE	TOLERANCE
0-10	±0.15
>10-40	±0.25
>40-70	±0.30
>70	±0.40

THIS DRAWING IS A CONTROLLED DOCUMENT.		DWN 15JAN2018 GANESH C M	TE Connectivity	
DIMENSIONS: mm		CHK 15JAN2018 FRANZ MUELLER		
TOLERANCES UNLESS OTHERWISE SPECIFIED:		APVD 15JAN2018 MARTIN SZELAG	NAME	
0 PLC ± - 1 PLC ± - 2 PLC ± - 3 PLC ± - 4 PLC ± - ANGLES ± -		PRODUCT SPEC 108-94552	RJ45 JACK INT.MAG. 1Gb 1x1	
MATERIAL △ 1		FINISH △ 1	APPLICATION SPEC 114-94447	RESTRICTED TO
		WEIGHT -	SIZE A3	CAGE CODE 00779
		CUSTOMER DRAWING	DRAWING NO C-7-2301994-5	REVISION A1
			SCALE 3:1	SHEET 1 of 3

THIS DRAWING IS UNPUBLISHED.

RELEASED FOR PUBLICATION

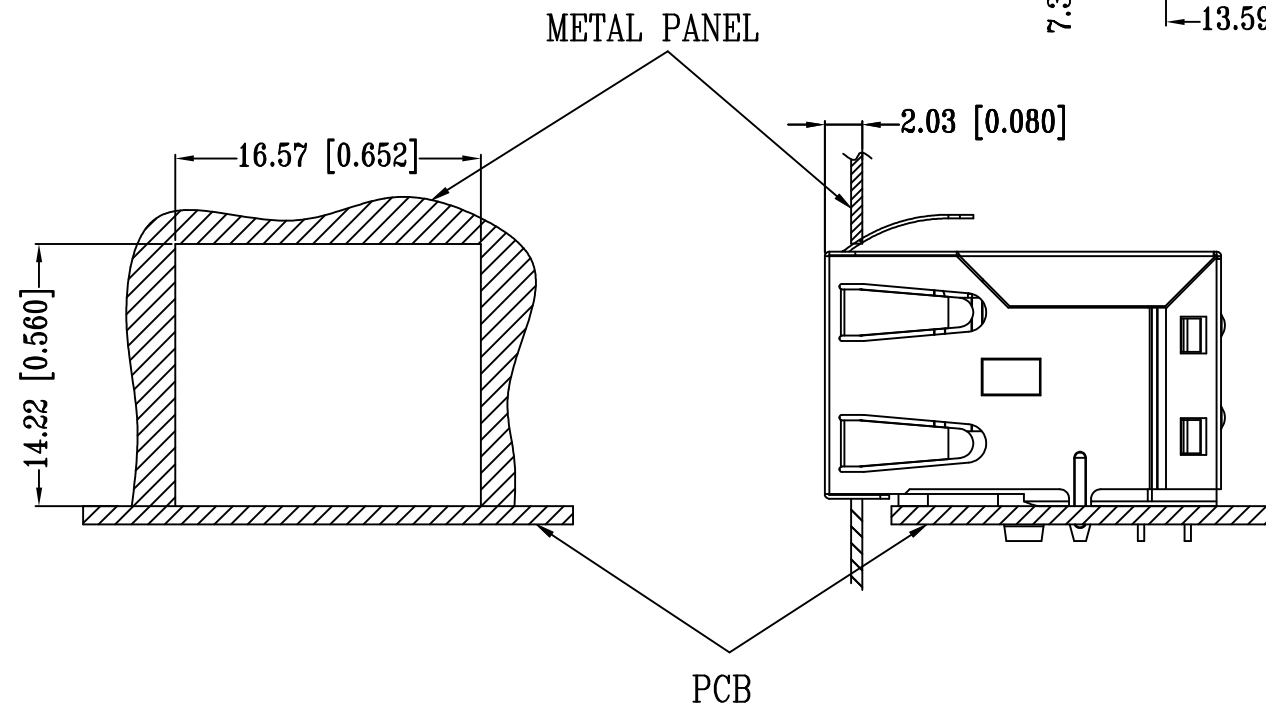
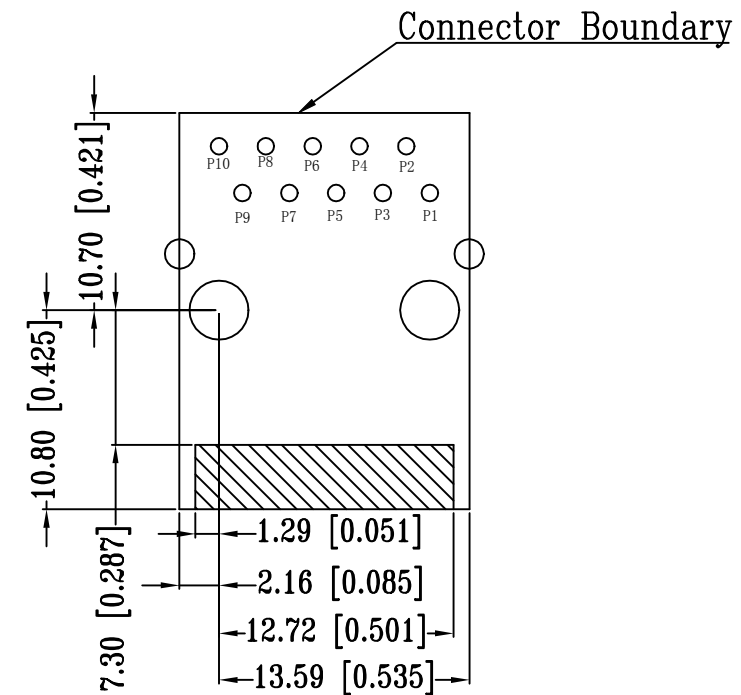
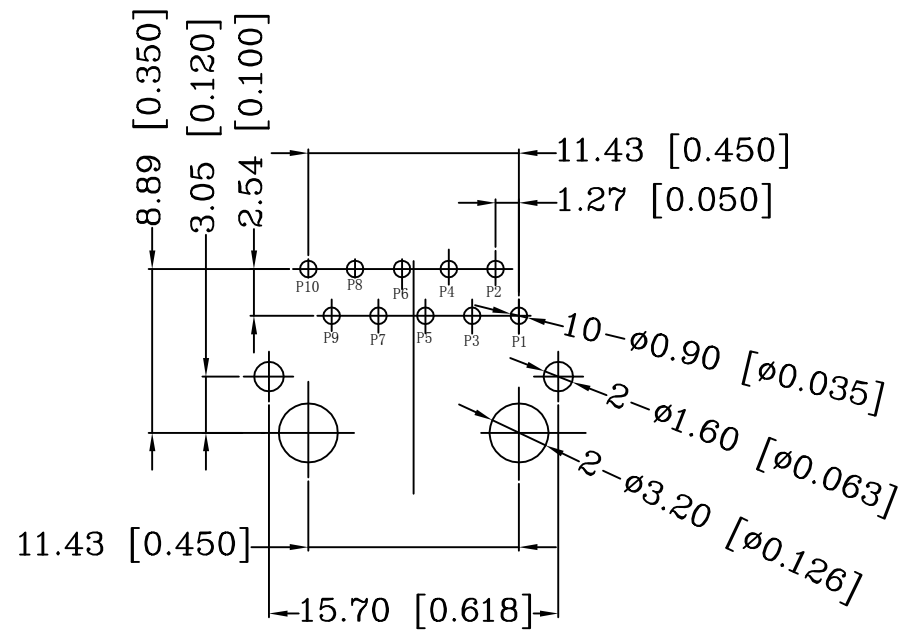
REVISIONS

© COPYRIGHT - TE Connectivity Ltd.

ALL RIGHTS RESERVED.

P	LTR	DESCRIPTION	DATE	DWN	APVD
-	-	SEE SHEET 1	-	-	-

SUGGESTED PCB LAYOUT



UNIT: mm
TOLERANCES: ± 0.10

THIS DRAWING IS A CONTROLLED DOCUMENT.		DWN GANESH C M 15JAN2018	TE Connectivity		
		CHK FRANZ MUELLER 15JAN2018			
DIMENSIONS: mm		APVD MARTIN SZELAG 15JAN2018	PRODUCT SPEC 108-94552		
		TOLERANCES UNLESS OTHERWISE SPECIFIED: 0 PLC $\pm -$ 1 PLC $\pm -$ 2 PLC $\pm -$ 3 PLC $\pm -$ 4 PLC $\pm -$ ANGLES $\pm -$			
		FINISH	SIZE A3		
			DRAWING NO C-7-2301994-5		
			SCALE 3:1		
			REV A1		

THIS DRAWING IS UNPUBLISHED.

RELEASED FOR PUBLICATION

-, - .

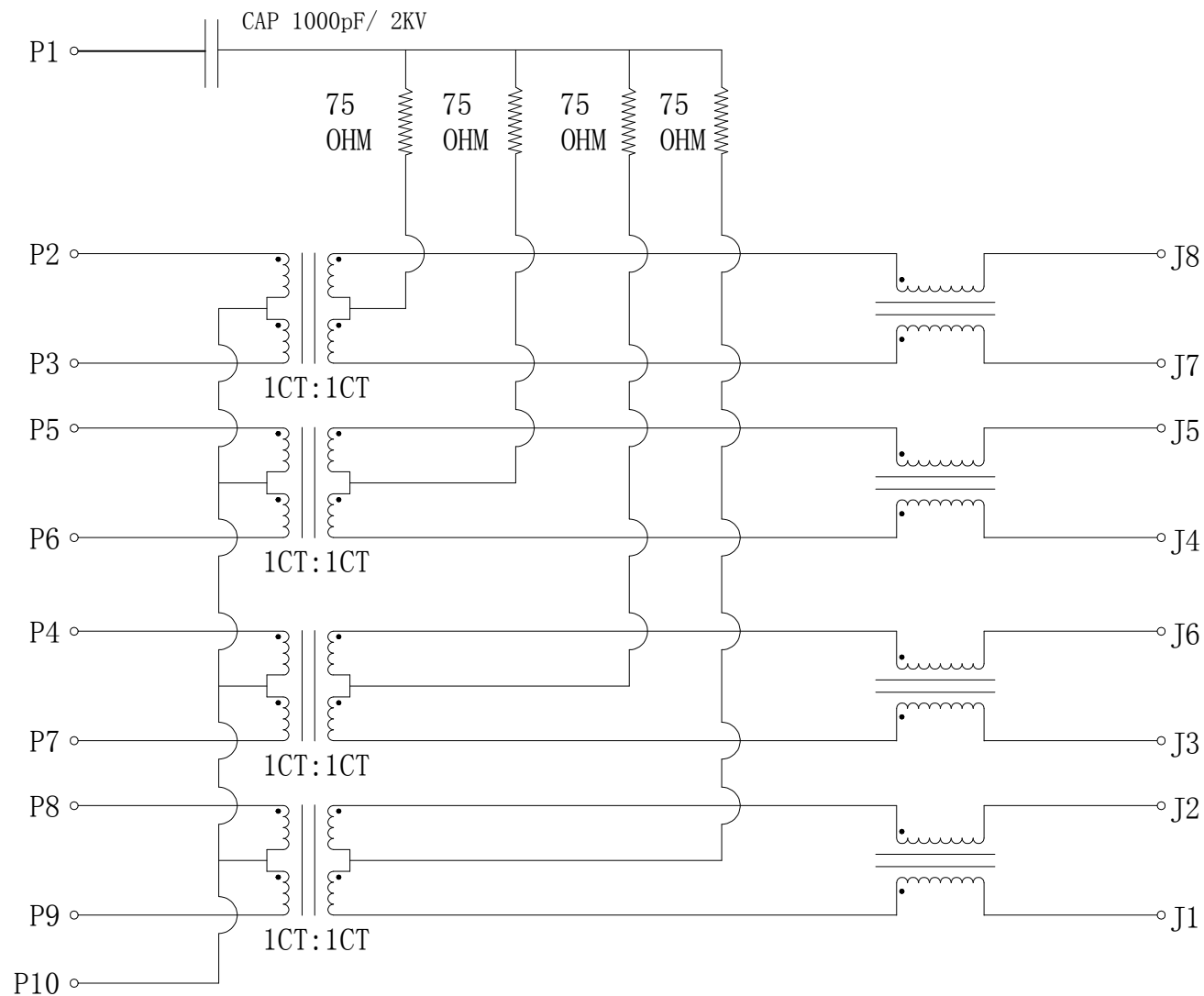
REVISIONS

© COPYRIGHT - TE Connectivity Ltd.

ALL RIGHTS RESERVED.

P	LTR	DESCRIPTION	DATE	DWN	APVD
-	-	SEE SHEET 1	-	-	-

ELECTRICAL CIRCUIT DIAGRAM



- 1.0 Turn Ratio @100KHz: (P9~P8):(J1~J2) = 1:1±2%
- (P7~P4):(J3~J6) = 1:1±2%
- (P6~P5):(J4~J5) = 1:1±2%
- (P3~P2):(J7~J8) = 1:1±2%

2.0 Primary Inductance: 350uH MIN @100KHZ,0.1V 8mA DC BIAS

3.0 DC Resistance: 1.2 OHMS MAX

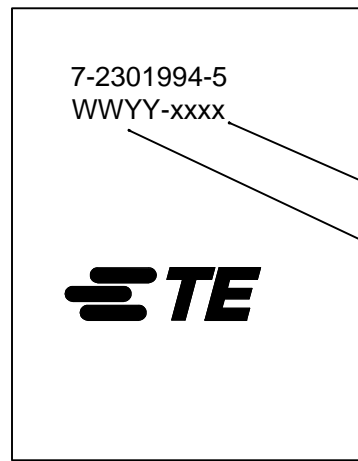
4.0 Insertion Loss: 1-100MHz -1.0dB MAX
 100-125MHz -1.2dB MAX

5.0 Return Loss: 1-40MHz -16dB MIN
 40-60MHz -12dB MIN
 60-80MHz -10dB MIN
 80-100MHz -8dB MIN

6.0 CROSS TALK: 1-100MHz -30dB MIN

7.0 COMMON TO COMMON MODE ATTENUATION: 1-100MHz -30dB MIN

8.0 Isolation: PHY Side to Line Side: 2250VDC



7-2301994-5
WWYY-xxxx



FCC

CONTROL CODE

DATE CODE

"0213"

YY-YEAR

WW-WEEK

THIS DRAWING IS A CONTROLLED DOCUMENT.		DWN 15JAN2018 GANESH C M	TE Connectivity	
DIMENSIONS: mm		CHK 15JAN2018 FRANZ MUELLER		
TOLERANCES UNLESS OTHERWISE SPECIFIED:		APVD 15JAN2018 MARTIN SZELAG	NAME	
0 PLC ± -		PRODUCT SPEC	RJ45 JACK INT.MAG. 1Gb 1x1	
1 PLC ± -		108-94552	SIZE CAGE CODE DRAWING NO RESTRICTED TO	
2 PLC ± -		APPLICATION SPEC	A3 00779 C-7-2301994-5	
3 PLC ± -		114-94447	SCALE SHEET REV	
4 PLC ± -		WEIGHT -	3:1 3 of 3 A1	
ANGLES ± -		CUSTOMER DRAWING		
MATERIAL 1		FINISH 1		