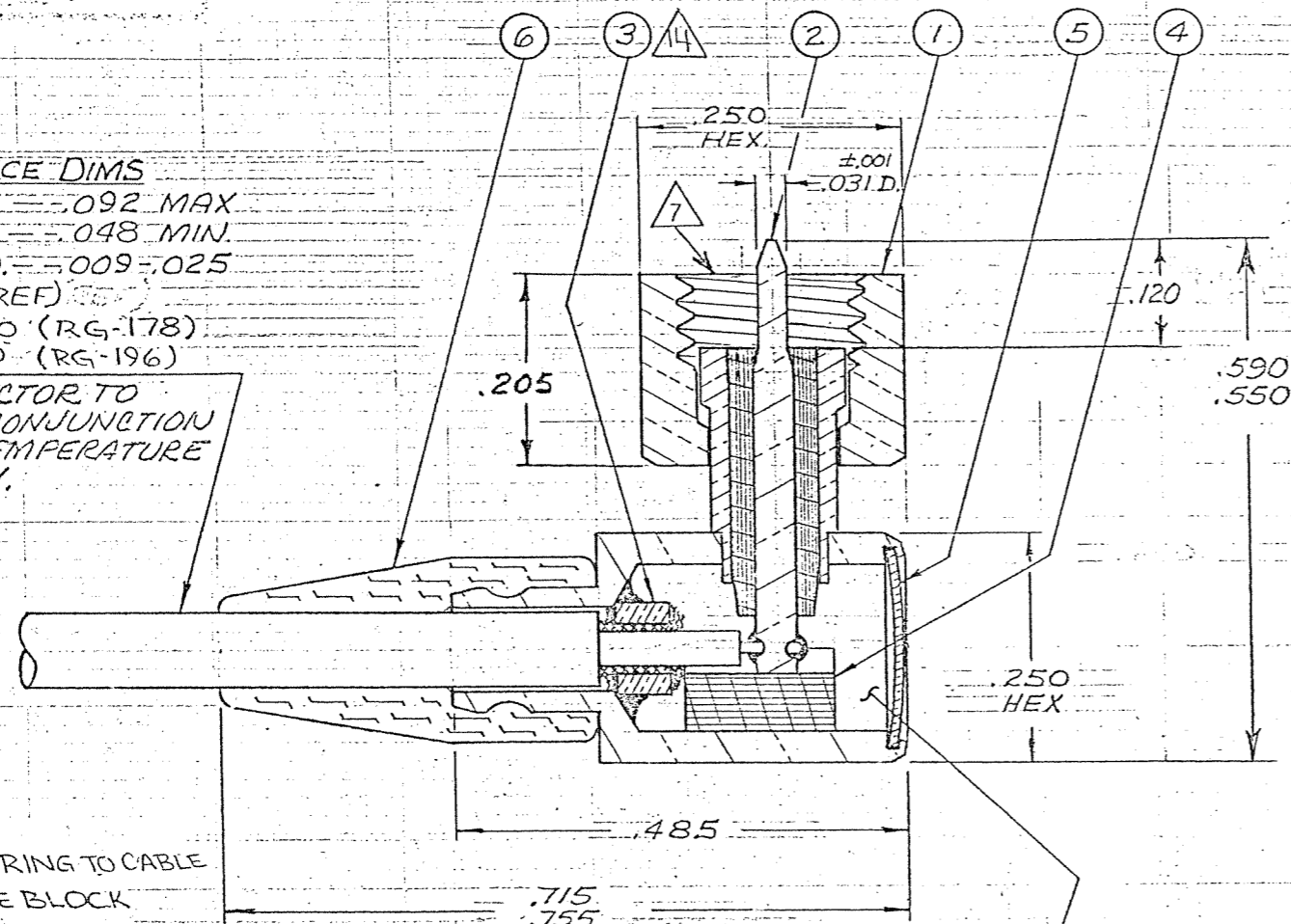


**CABLE ACCEPTANCE DIMS**  
 JACKET D. .092 MAX  
 SHIELD D. .048 MIN  
 CENTER CONDU. D. .009-.025  
 MALCO CABLE (REF)  
 250-3957-0000 (RG-178)  
 250-3960-0000 (RG-196)

NOTE: THIS CONNECTOR TO BE USED IN CONJUNCTION WITH HIGH TEMPERATURE CABLE ONLY.



Tyco Dwg 7-1532004-0  
 Micro P/N 052-0204-0001

14. SOLDER CLAMP RING TO CABLE SHIELD & TO ANGLE BLOCK

13. FOR USE ON US ARMY MAT. CMND. 1018 9320 REV. D'  
 12. 052-0204-0001 SAME AS 052-0204

11. FOR USE ON BU. ORD. 1639685 REV. H  
 (MALCO 030-0286-\*\*\*\*)

10. THIS CONNECTOR SIMILAR TO 032-0015-0001

9. INSULATION RESISTANCE -  $5.0 \times 10^9$  OHMS MIN

8. WORKING VOLTAGE = 750 V.R.M.S.

7. 190-32 UNF-2B THREAD

6. BODY SUB-ASSY SILVER BRAZED TOGETHER

5. SILVER PLATE .0002-.0004 PER QQ-S-365, TYPE II, GR. A

4. GOLD PLATE PER MIL-G-45204, TYPE II, GR. C, CL. 1 OVER COPPER STRIKE

3. ASSY TOOL # 010-0016-0000 REQ'D.


2. FOR ASSY. INSTRUCTIONS SEE RF-ASMB-87

1. THIS CONNECTOR MATES WITH ALL RECEPT. & JACKS IN SERIES S-50 AS LISTED IN MALCO CATALOG.

NOTES: UNLESS OTHERWISE SPECIFIED

BEFORE CAPPING, FILL CAVITY WITH POTTING COMPOUND PER RF-ASMB-87.

QTY	PART No.	NOMENCLATURE	MAT'L & SPEC.	ITEM
1	003-0270-0000	BEND RELIEF CAP	SILICONE RUBBER ZZ-R-765	6
1	003-0098-0001	SEAL DISC	BRASS PER QQ-B-613	5
1	003-0331-0001	BACK-UP BUSHING	TEFLON PER L-P-403	4
1	003-0030-0001	CLAMP RING	BRASS PER QQ-B-626	3
	003-0050-0001	BUSHING	TEFLON PER L-P-403	
	005-0591-0002	PIN	BRASS PER QQ-B-626	
1	005-3491-0001	PIN SUB-ASSEMBLY		2
	003-0454-0000	COUPLING NUT	BRASS PER QQ-B-626	
	003-0078-0000	FERRULE	BRASS PER QQ-B-626	
	003-0135-0000	ANGLE BLOCK	BRASS PER QQ-B-626	
1	003-7309-0001	BODY SUB-ASSEMBLY		1

STANDARD TOLERANCES UNLESS OTHERWISE SPECIFIED DEC. $\pm$ .010 FRAC. $\pm$ _____ ANGLES $\pm$ _____ ECCENTRICITY _____ MAX. T.I.R. _____ HOLE DIA. $\pm$ _____ SURFACE ROUGHNESS _____ MICRO INCHES _____ THREADS TO MIL-S-7742 COMMERCIAL TOLERANCES APPLY TO STOCK DIMENSIONS		 <b>MALCO</b> A MICRODOT COMPANY, INC. 220 PASADENA AVE., SO. PASADENA, CAL	
SURFACE TREATMENT _____ NOTED		MATERIAL _____ NOTED	
APP G.G.		APP F.R.G.	
CHECKED BY _____		DRAWN BY M.F.M.	
SCALE _____		WT _____	
DATE 7/10/61		DRAWING NUMBER	
CODE CDM		052-0204-0001	

ASSEMBLY	NO REQ'D	LET	ECO	REVISION DESCRIPTION	BY	DATE	APP
	N			UPDATE REV. LETTER.	TL	7/10/61	
					CK		

ANGLE PLUG