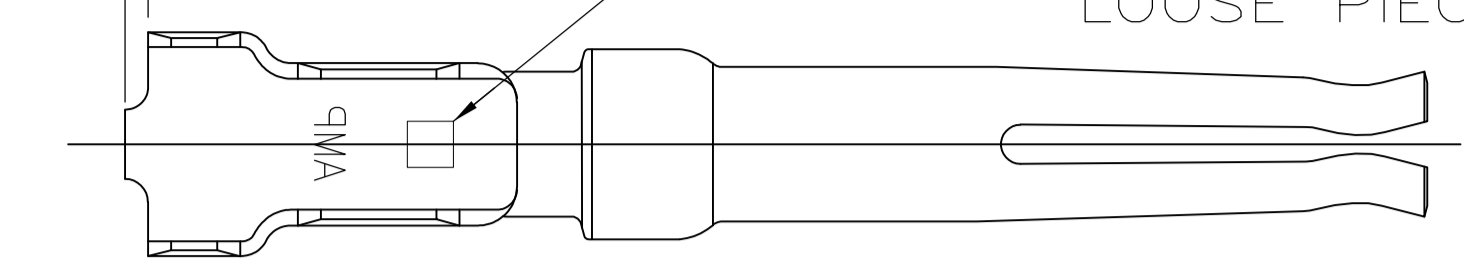
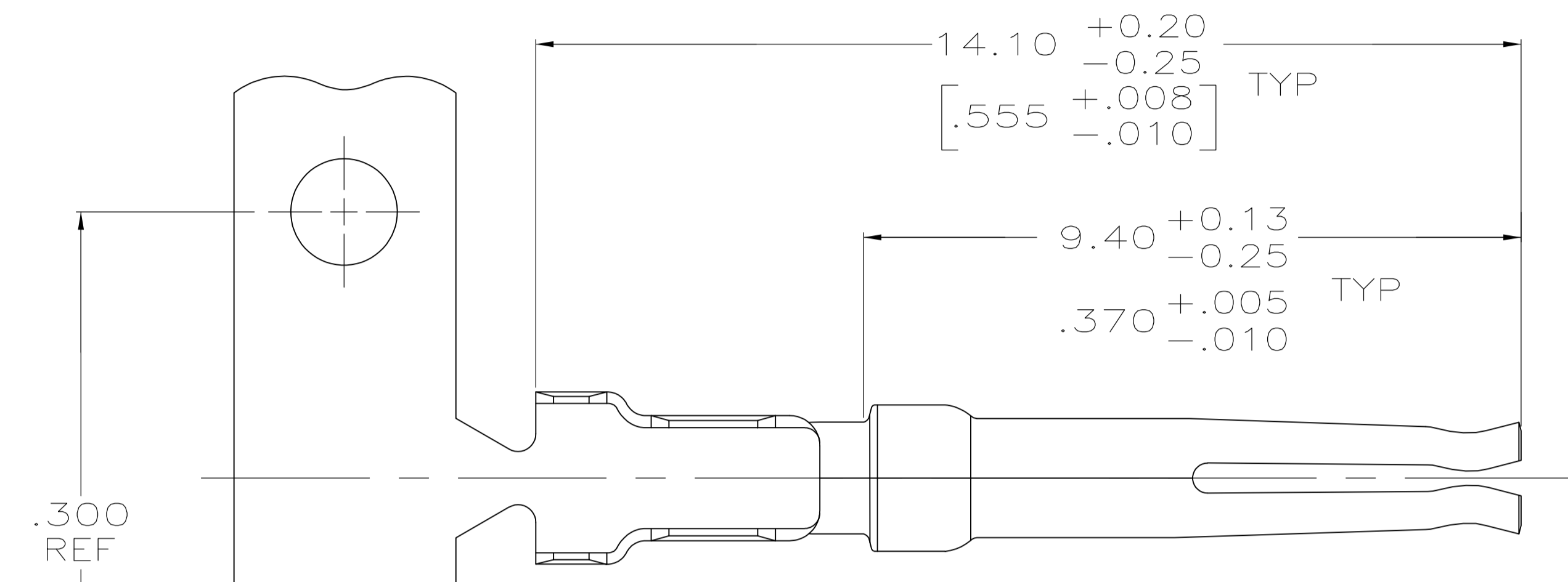


0.25 MAX
[.010]

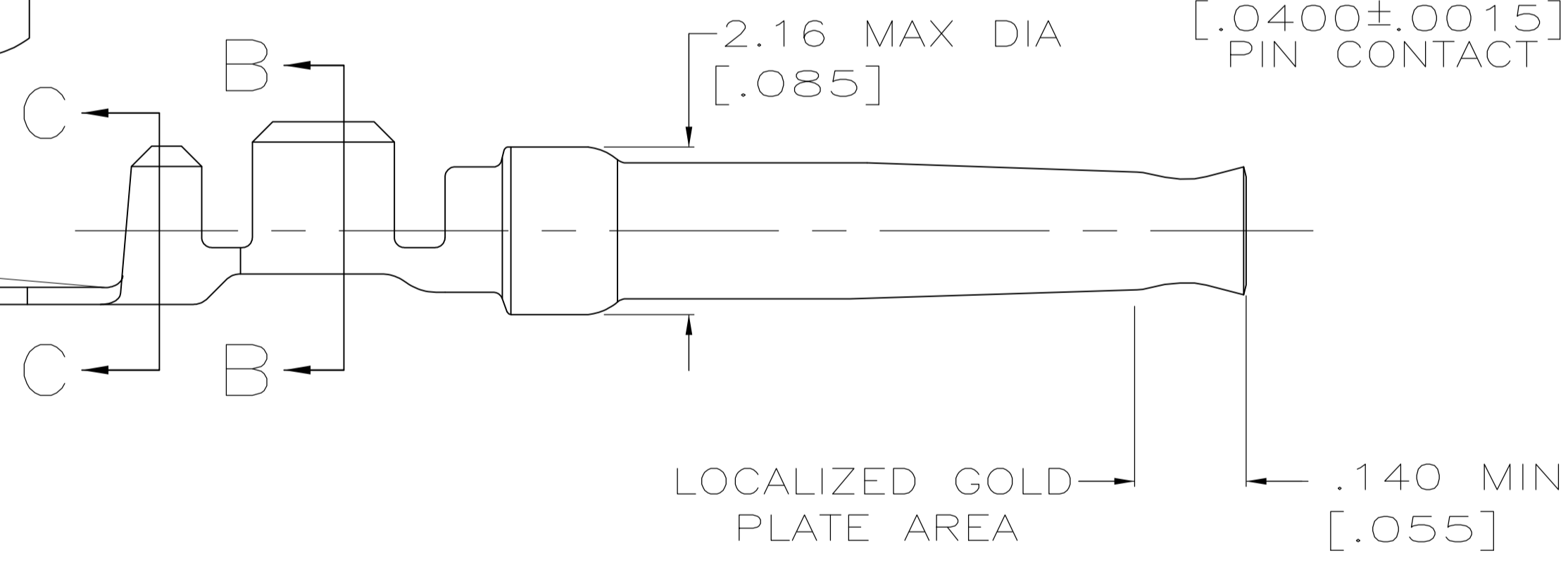
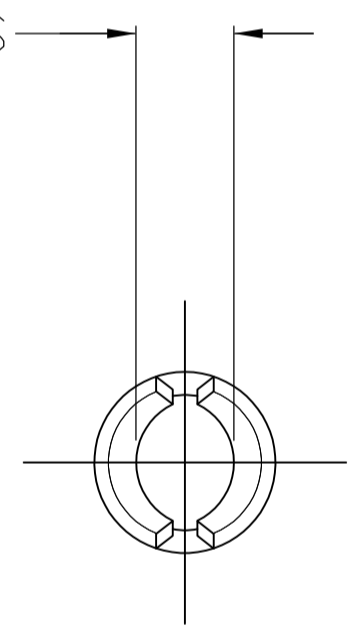
COLOR CODED RED, ON FAR SIDE, INDICATES 20-24 AWG WIRE RANGE, LOOSE PIECE ONLY



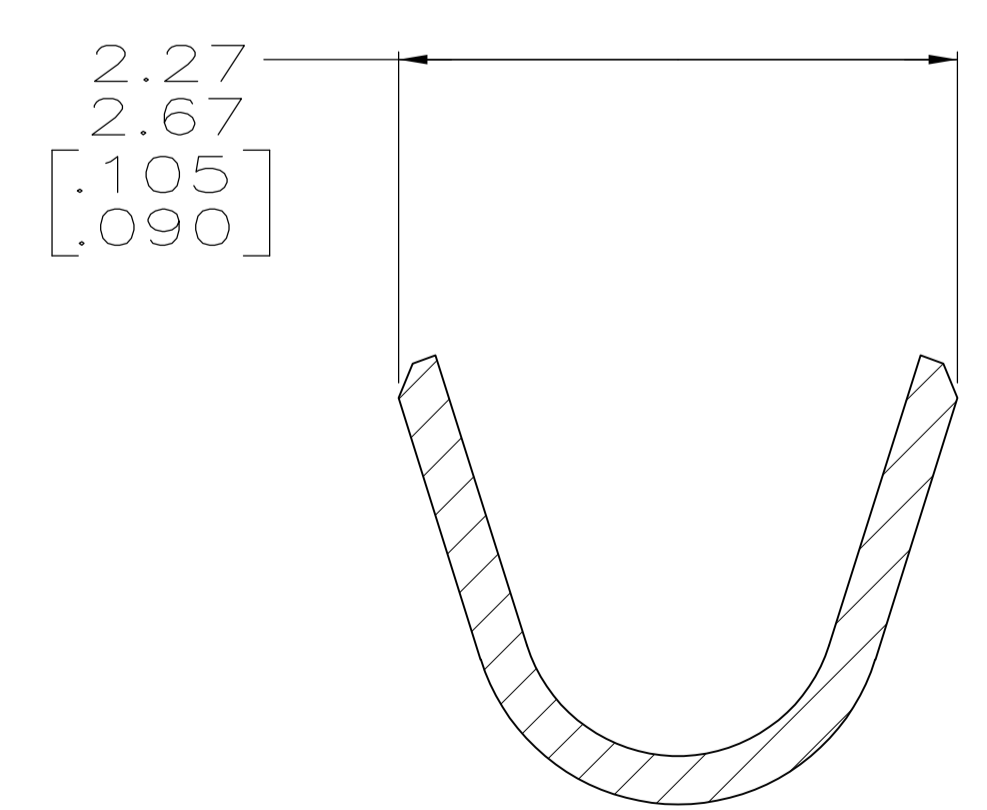
DETAIL Z
SCALE 8:1



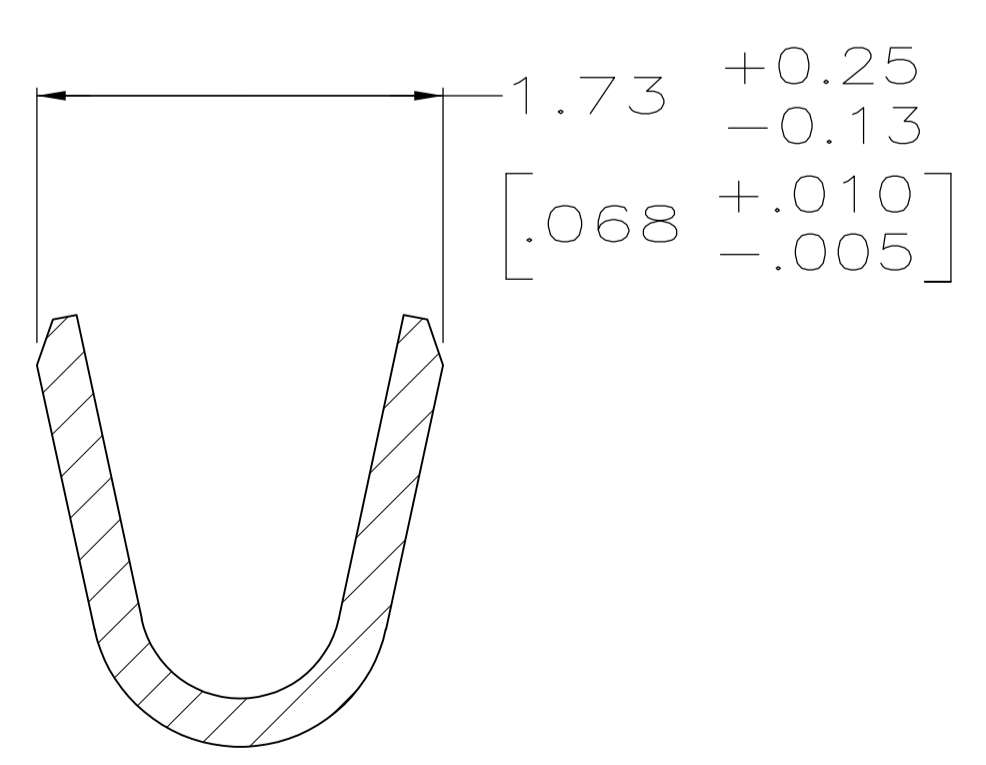
ID ACCOMMODATES
1.02±0.04 DIA
[.0400±.0015]
PIN CONTACT



LOCALIZED GOLD PLATE AREA
.140 MIN [.055]



SECTION C-C
SCALE 20:1
INSULATION BARREL



SECTION B-B
SCALE 20:1
WIRE BARREL

- 1 FOR MINI-APPLICATOR AND STRIPPER CRIMPER.
- 2 FOR HAND TOOL USE ONLY.
- 3. WIRE RANGE OF 20-24 AWG. INSULATION RANGE OF 1.27/1.52 [.050-.060].
- 4. GOLD PLATING MAY NOT APPEAR ON CARRIER STRIP OR INSULATION BARREL.
- 5 GOLD PLATING PER MIL-G-45204, NICKEL PLATING PER QQ-N-290.
- 6 PLATED WITH 1.27µm [.000050] GOLD ON INSIDE OF LOCALIZED GOLD PLATE AREA, 1.27µm [.000050] GOLD ON REMAINDER, ALL OVER 1.27µm [.000050] NICKEL UNDERPLATE.
- 7 PLATED WITH 1.27µm [.000050] GOLD ON INSIDE OF LOCALIZED GOLD PLATE AREA, GOLD FLASH ON REMAINDER, ALL OVER 1.27µm [.000050] NICKEL UNDERPLATE.

STANDARD	7	1	-	6-66504-8
STANDARD	6	2	SEE DETAIL Z	66504-8
STANDARD	6	1	-	66504-2
PACKAGING TYPE	FINISH	USE	LOOSE PIECE	PART NUMBER

THIS DRAWING IS A CONTROLLED DOCUMENT. DIMENSIONING AND TOLERANCING PER ASME Y14.5M-2009.

DIMENSIONS: mm [INCHES]	TOLERANCES UNLESS OTHERWISE SPECIFIED:	DIN C. VALENTINE 04MAR2013	APVD C. ROHDE 04MAR2013	NAME
0 PLC ± -	1 PLC ± -	2 PLC ± 0.13 [.005]	3 PLC ± -	4 PLC ± -
ANGLES ± -	FINISH SEE TABLE	WEIGHT	SIZE A1	CAGE CODE 00779
MATERIAL PHOSPHOR BRONZE PER QQ-B-750	REVISIONS	DATE	DESCRIPTION	DATE

STE TE Connectivity

SOCKET CONTACT, SIZE 20 DF, 20-24 AWG, AMPLIMITE

CUSTOMER DRAWING SCALE 15:1 SHEET 1 OF 1 REV A