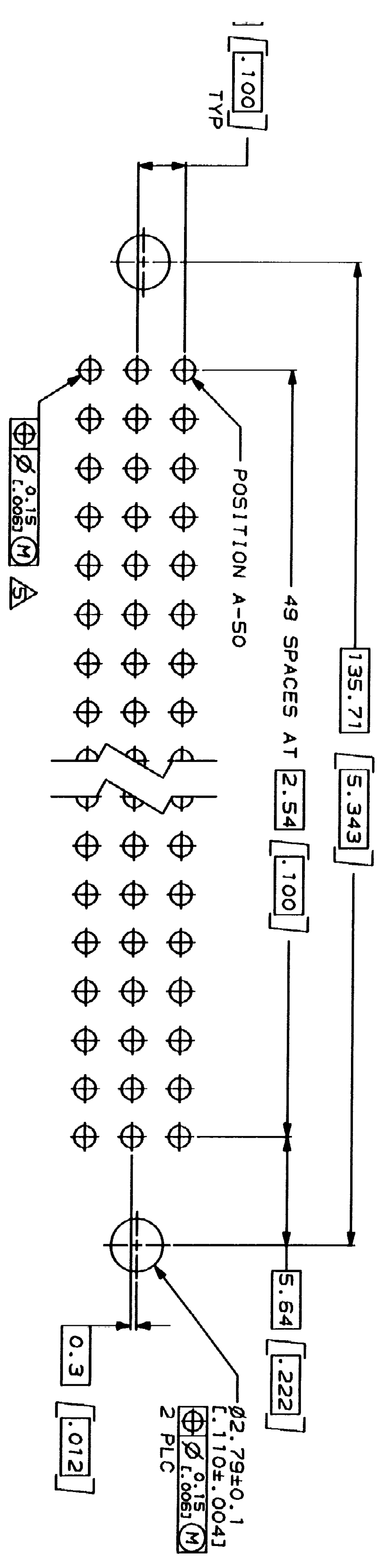
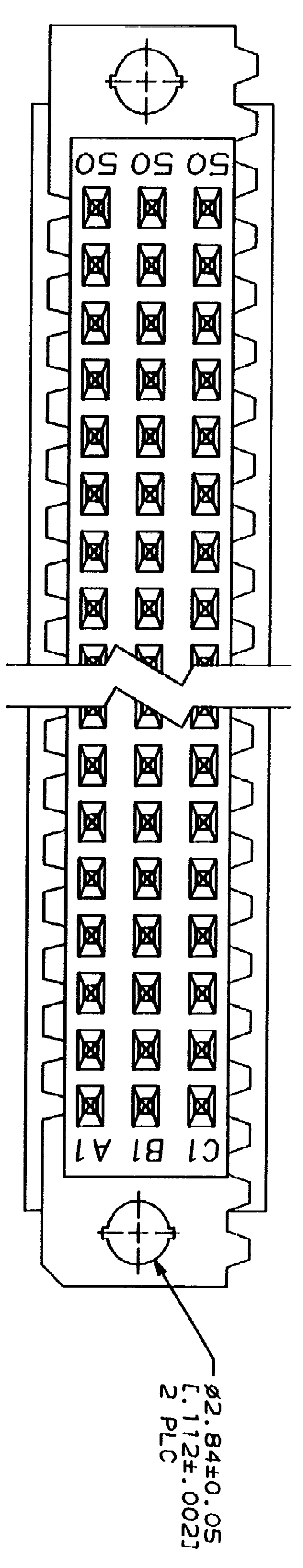
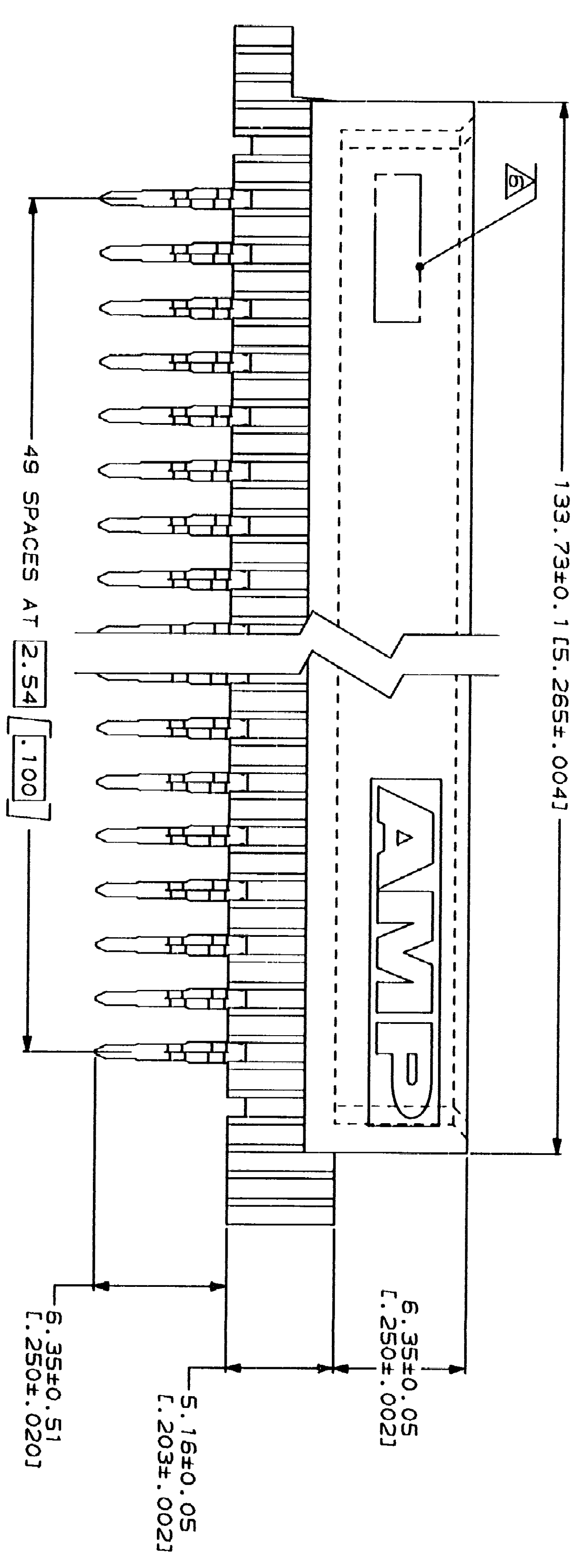
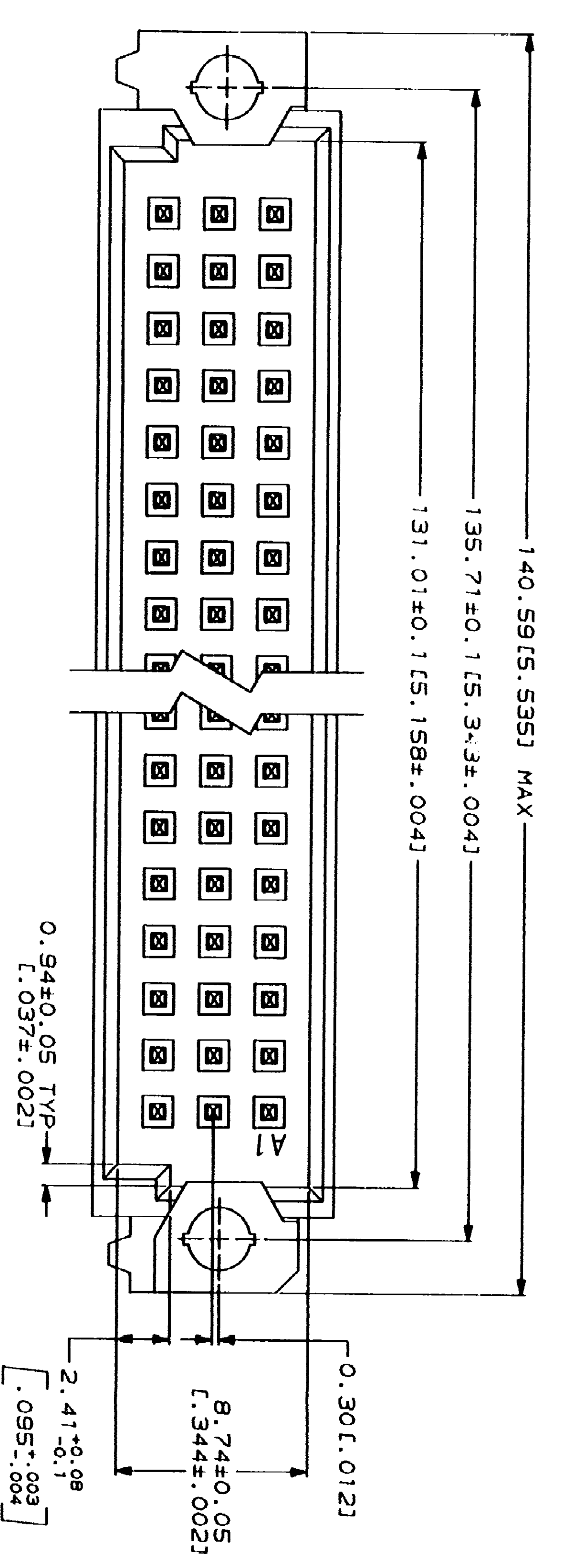


DATE	APPD
11/14/91	LSB
12/20/91	LSB
6/28/93	LSB
3/26/94	LSB

REV	DATE	DESCRIPTION
1	11/14/91	LSB
2	12/20/91	LSB
3	6/28/93	LSB
4	3/26/94	LSB

PRODUCTION RELEASED FOR PUBLICATION
 ALL INFORMATION IS BEING RELEASED
 1.19

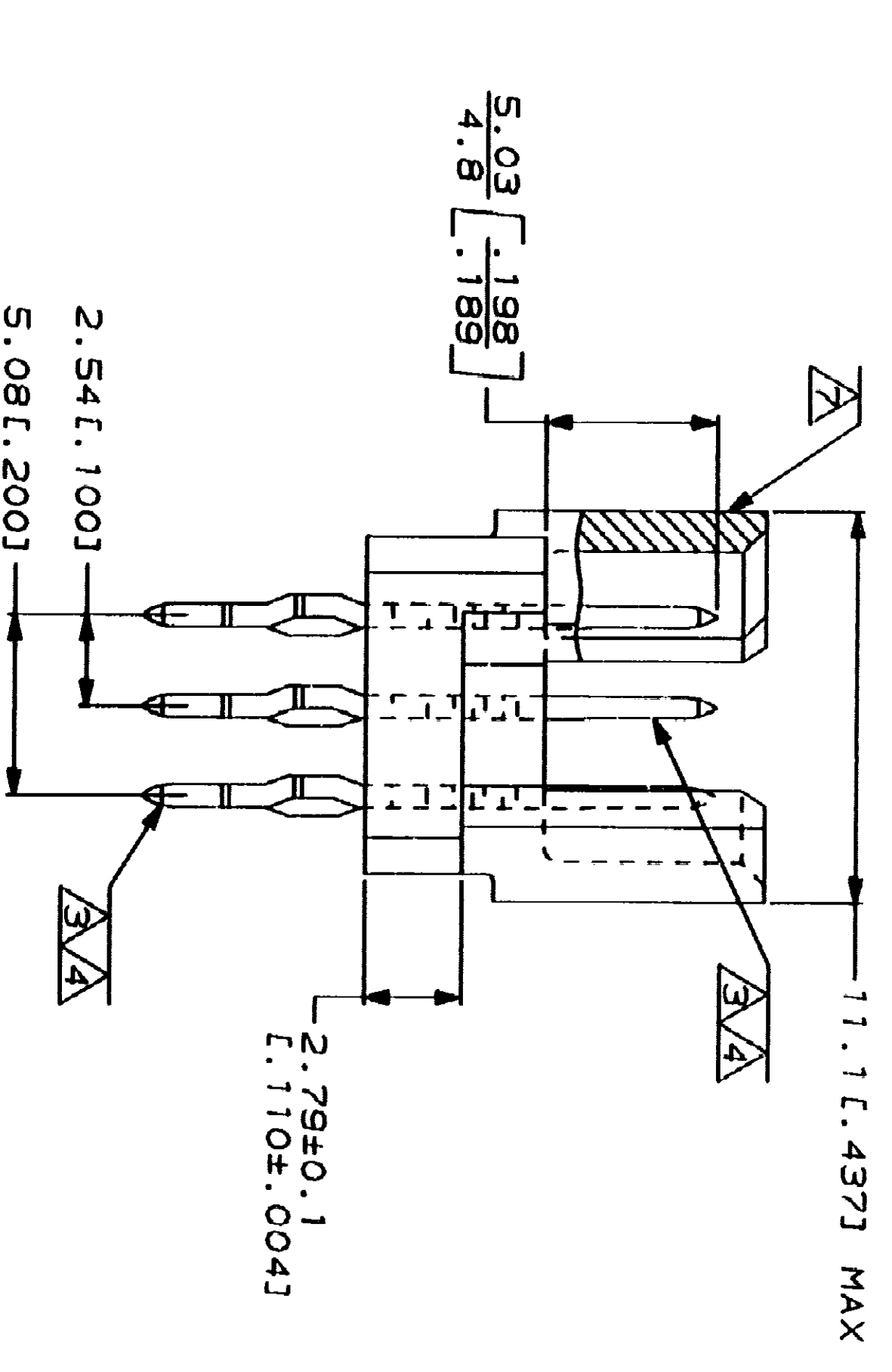


PC BOARD LAYOUT

RAWING 1 OF 1

REV	DATE	DESCRIPTION
0		DRAWN
B		ECN A05586; A05640
C		ECN A05876
D		ECN A05871
E		ECN A06256
F		EC 0010-0513-93
G		EC 0010-0151-94
H		EC 0010-0436-94

- △ HOUSING MATERIAL: GLASS-FILLED POLYESTER. COLOR: GRAY.
- △ POST MATERIAL: PHOSPHOR BRONZE.
- △ POST FINISH: DIN 41612 CLASS 3 IN CONTACT AREA.
- △ TIN-LEAD PLATE ON POSTS.
- △ TIN-LEAD PLATE ON CONTACT AREA.
- △ ACTION PIN POSTS REQUIRE 2.36L (0.93) MINIMUM THICK PLATED THROUGH WITH 0.02-0.08L (0.01-.003) COPPER AND 0.008L (0.003) MINIMUM TIN-LEAD PLATING. FINISHED HOLE AFTER PLATING, 0.94-1.09L (0.37-.043) DIA.
- △ [PART NUMBER, DATE CODE] MARKED THIS APPROXIMATE AREA.
- △ MARKING ON THIS SIDE.



OBsolete	1-50	X	X	X	150
△	1-50	X	X	X	150

DR	DATE	NAME
L. BRINER	3/18/91	
D. C. RUBENDALL	3/26/91	
D. C. RUBENDALL	3/26/91	
K. R. PARTNER	3/26/91	

SIZE	CAGE CODE	DRAWING NO.
D	00779	6501

CUSTOMER