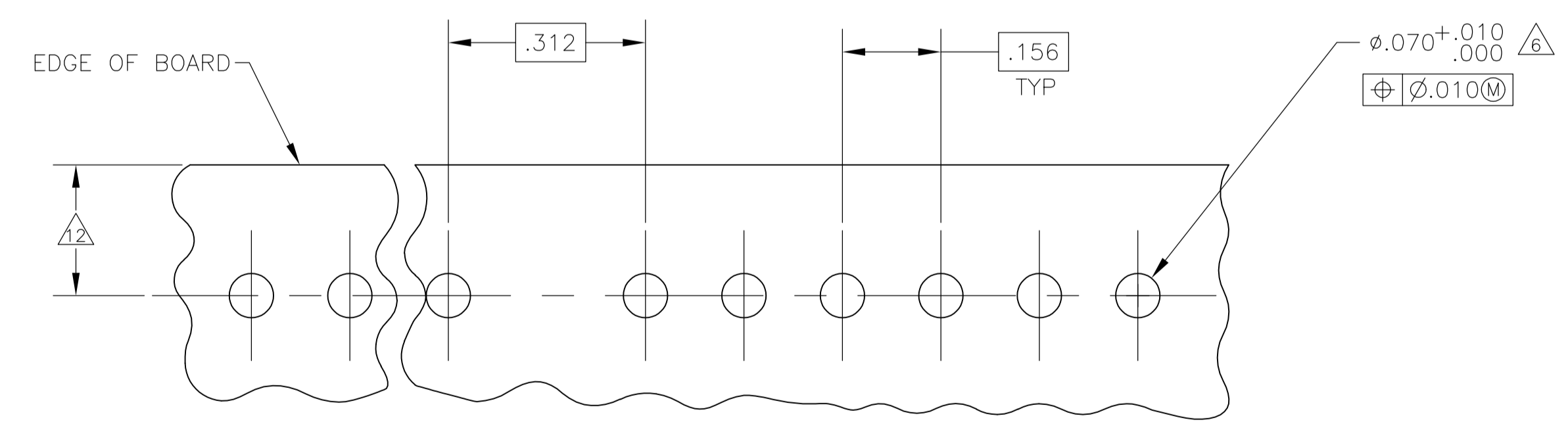
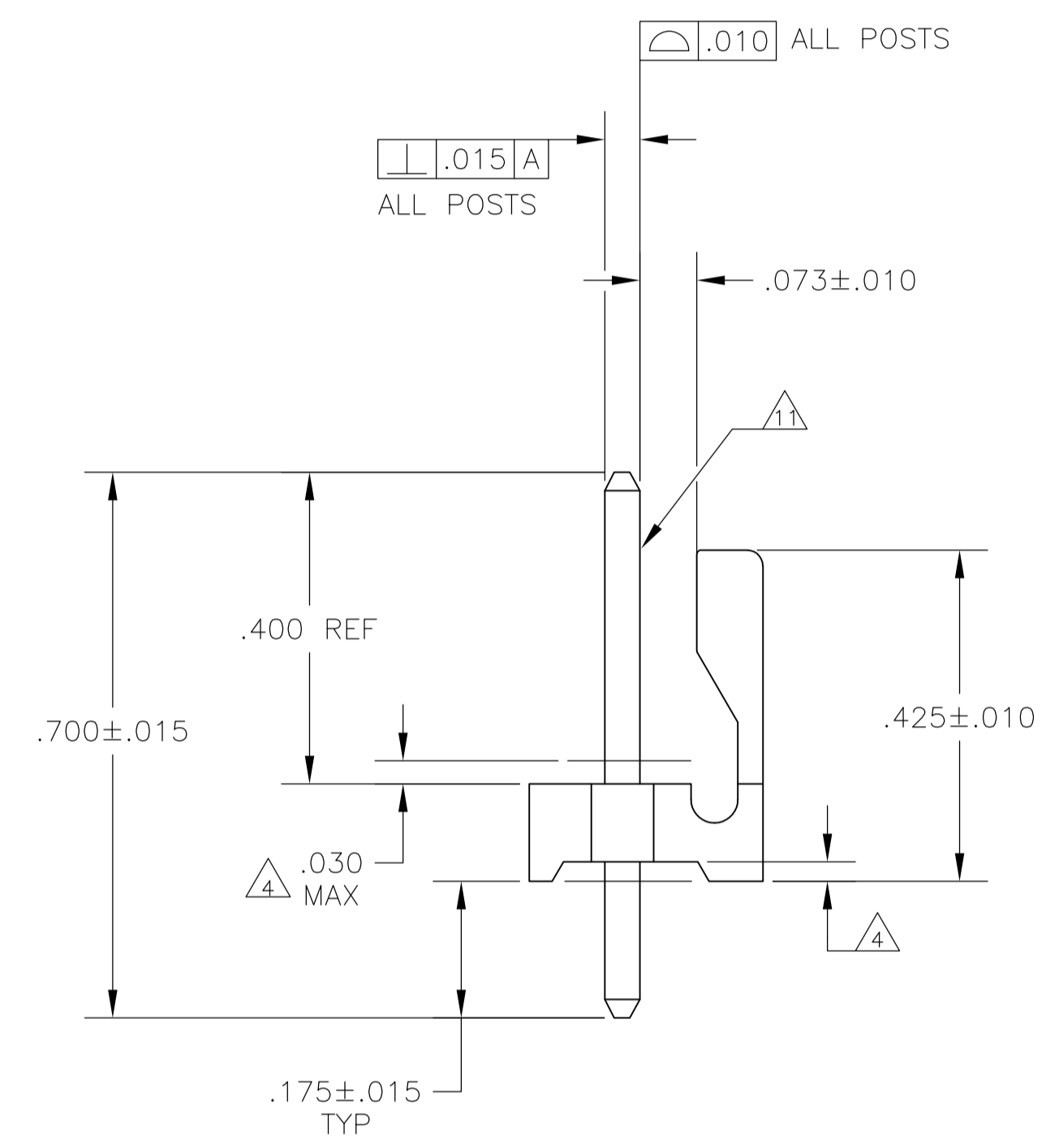
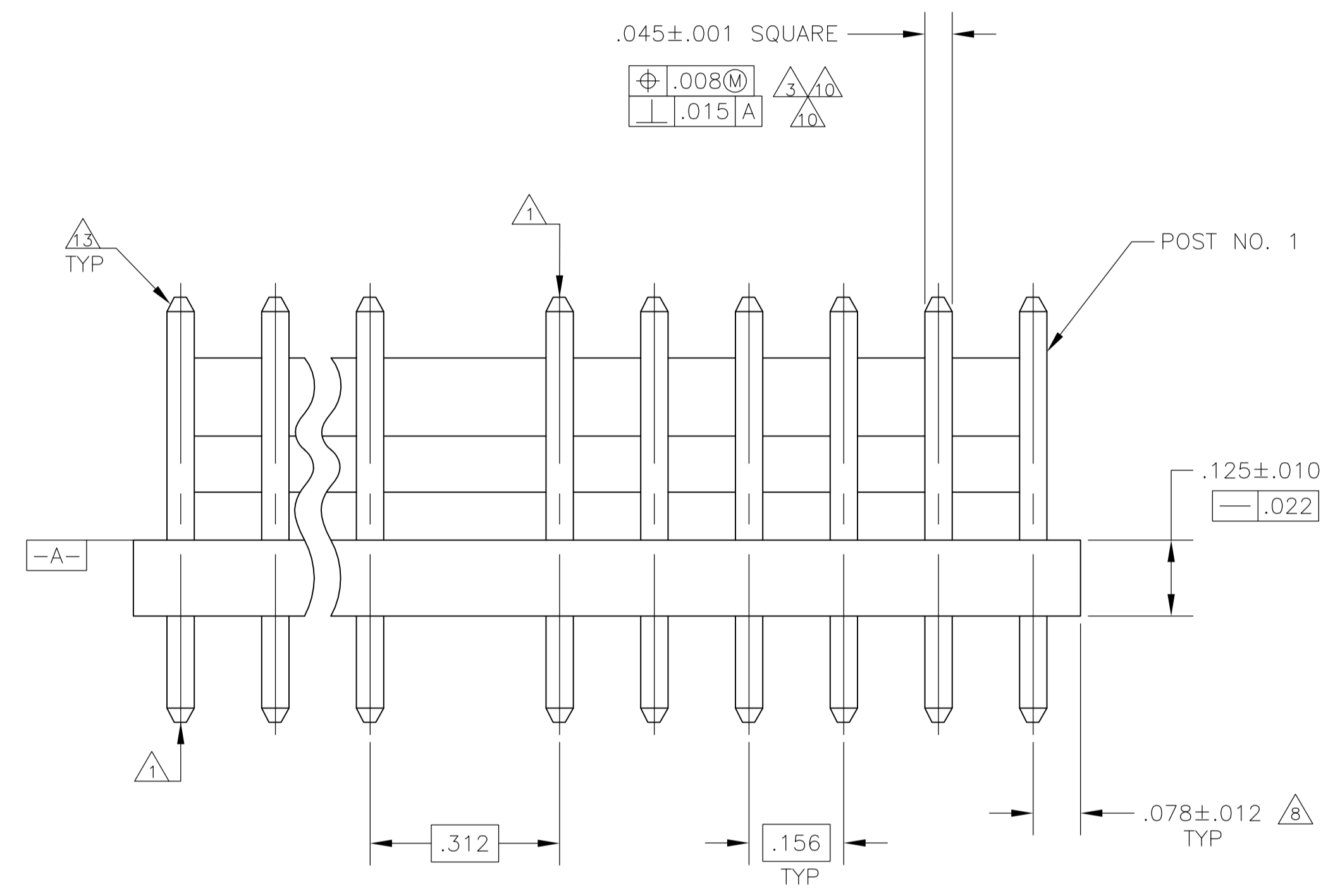
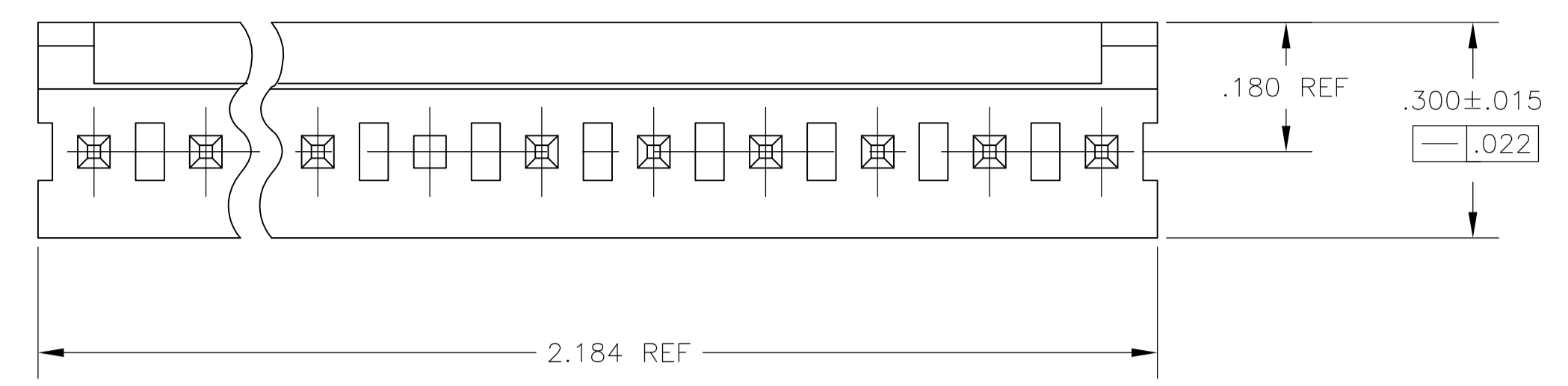


LOC	DIST	REVISIONS			
REV	DATE	DESCRIPTION	DATE	BY	APPV
E	12OCT11	REACTIVATED PER ECO 11-020521		JR	SM
E1	30AUG13	ECR-12-016748		M.T	D.Z



- 1 POST TO WITHSTAND 13 NEWTONS (3LBS.) MIN. AXIAL FORCE IN BOTH DIRECTIONS SHOWN WITHOUT DISLODGING.
- 2 TOLERANCES APPLY TO SOLDER SIDE OF BOARD.
- 3 MEASURED AT SURFACE -A-
- 4 PLASTIC FLASH PERMITTED IN THIS AREA.
- 5 PARTS COMPLY WITH AMP SOLDERABILITY SPEC. NO. 109-11-2.
- 6 ONE HOLE MAY BE UNDERSIZED (.065/.060 DIA.) FOR ASSEMBLY RETENTION DURING WAVE SOLDERING.
- 7 MATERIAL: HEADER - THERMOPLASTIC POLYESTER GLASS-FILLED 94V-0(NATURAL)
POST - COPPER ALLOY (TIN PLATED)
- 8 COORDINATE DIMENSION APPLIES FROM CENTER OF ACTUAL FEATURE.
- 9 PLASTIC BURRS CAUSED BY CUT-OFF TOOLING ARE PERMITTED WITHIN THE MAXIMUM TOLERANCE ENVELOPE.
- 10 POST TO BE MEASURED WHEN STRIP IS HELD FLAT.
- 11 POST MUST WITHSTAND TWO 90° BENDS AGAINST EXTRUSION WITHOUT BREAKING.
- 12 DIMENSION SHOULD BE .175 MIN WHEN MATING WITH A MTA-156 CONNECTOR ASSEMBLY OR A SL-156 CONNECTOR ASSEMBLY.
- 13 PIN BURR OF .005 MAX. VERTICAL AND .003 MAX. HORIZONTAL PERMITTED AT POST TIPS ON BOTH ENDS.

E1 RECOMMENDED MOUNTING HOLE PATTERN FOR .109±0.016 THICK P.C. BOARD

IN	MM	IN	MM	IN	MM
.063	1.60	.750	19.05	-	-
.060	1.52	.450	11.43	-	-
.045	1.14	.425	10.80	-	-
.030	0.76	.312	7.92	-	-
.022	0.56	.300	7.62	-	-
.015	0.38	.180	4.57	-	-
.012	0.30	.175	4.45	-	-
.010	0.25	.156	3.96	-	-
.008	0.20	.125	3.18	-	-
.005	0.13	.078	1.98	-	-
.003	0.08	.073	1.85	-	-
.001	0.03	.070	1.78	-	-
.000	0.00	.065	1.65	2.184	55.47
IN	MM	IN	MM	IN	MM

CONVERSION TABLE

OBsolete	4	644778-5
OBsolete	6	644778-4
OBsolete	5	644778-3
	8	644778-2
OBsolete	7	644778-1
	POST NUMBER OMITTED	PART NUMBER

THIS DRAWING IS A CONTROLLED DOCUMENT.

DIMENSIONS: INCHES	TOLERANCES UNLESS OTHERWISE SPECIFIED:	DIN K. SALMON 28APR94	TE Connectivity
0. PLC ± -	1. PLC ± .005	CHK R. SWING 28APR94	NAME D. CLARK 10MAY94
2. PLC ± -	3. PLC ± -	APPRO D. CLARK 10MAY94	PRODUCT SPEC
4. PLC ± -	ANGLES ± 0°30'	APPLICATION SPEC	MTA-156 HEADER ASSEMBLY, FRICTION LOCK, STRAIGHT, .045 SQUARE POST, TIN PLATED, 14 POSITION, OMITTED POST
MATERIAL	FINISH	SIZE A1	WEIGHT
		SCALE 5:1	SHEET 1 OF 1
		CUSTOMER DRAWING	REV E1