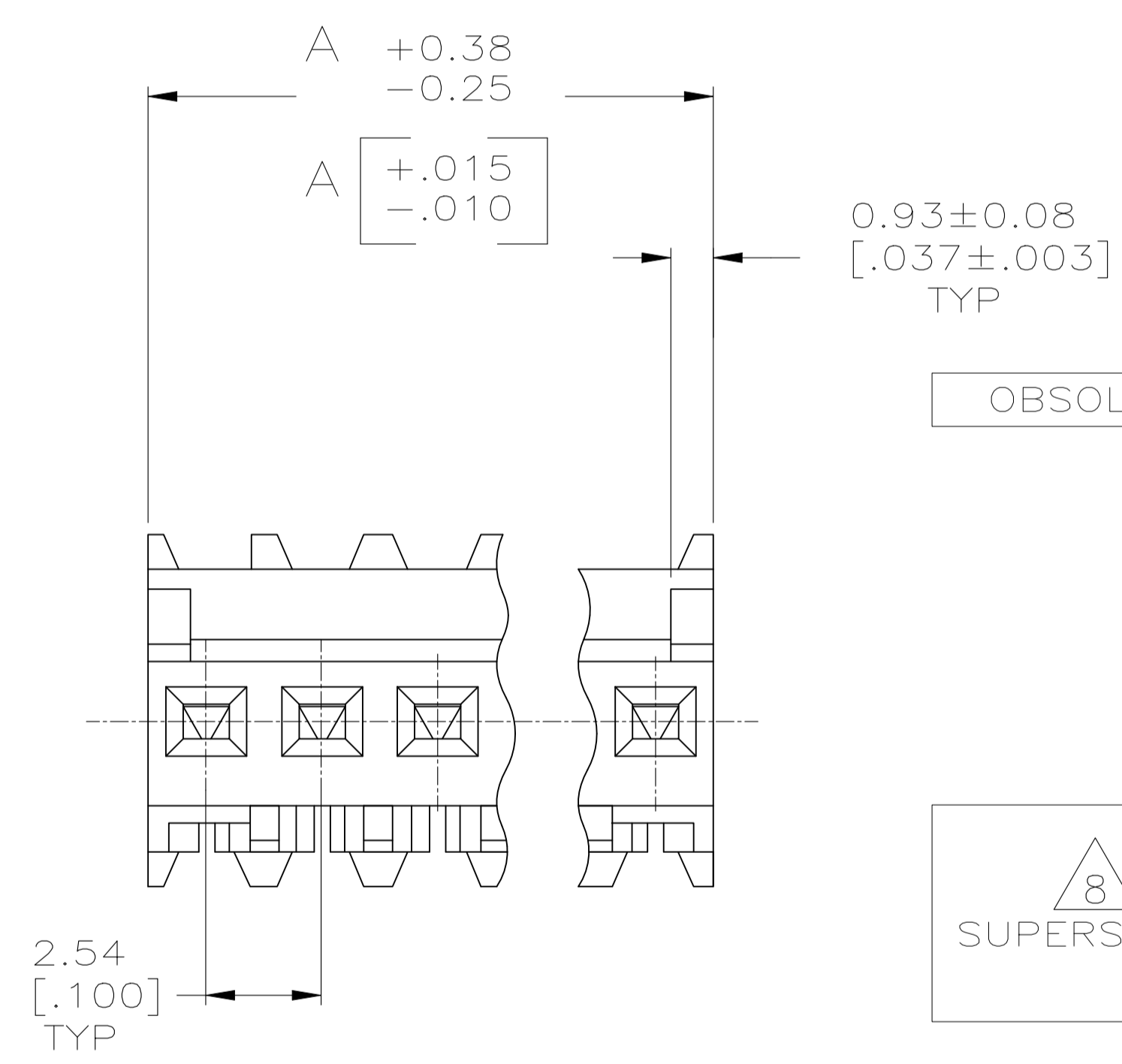
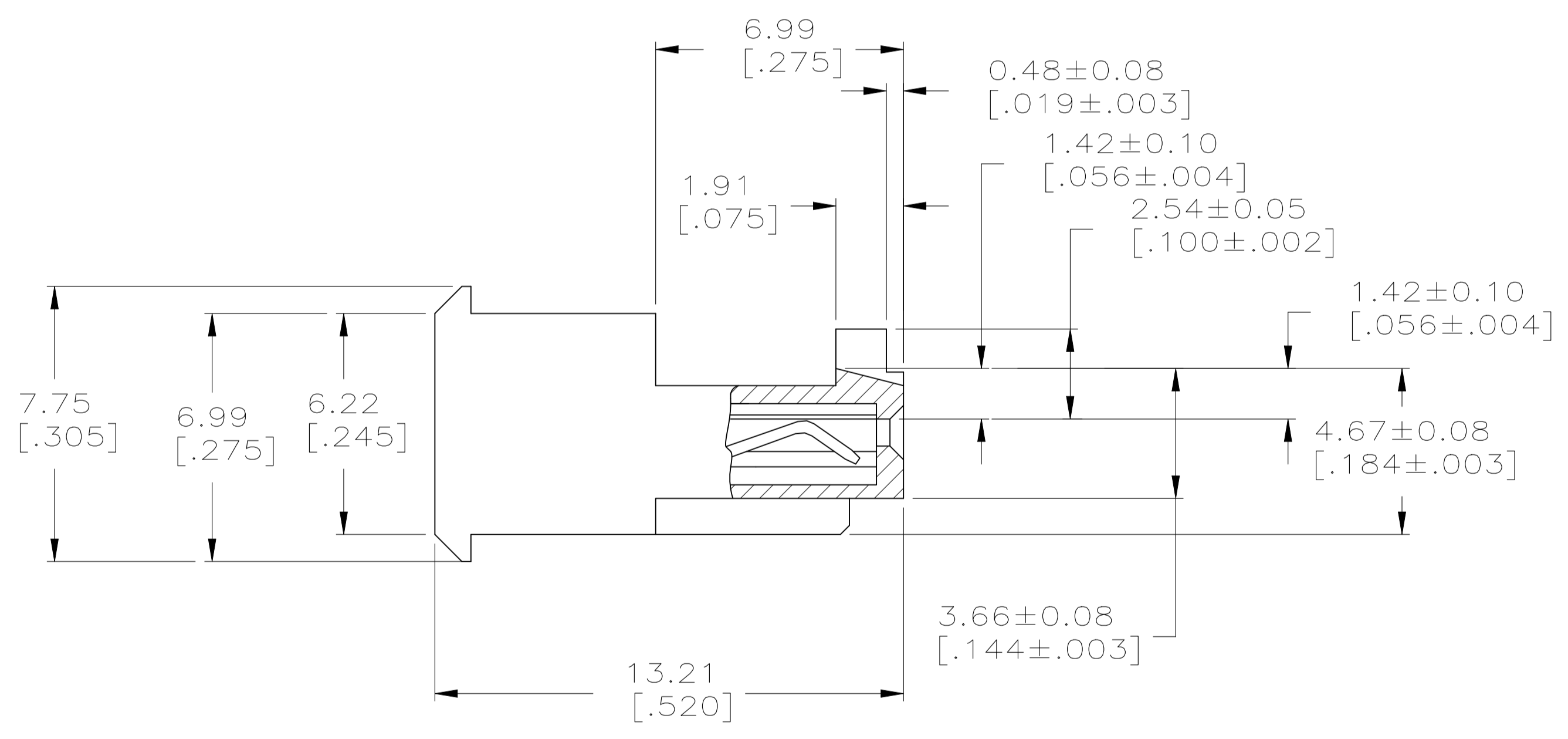
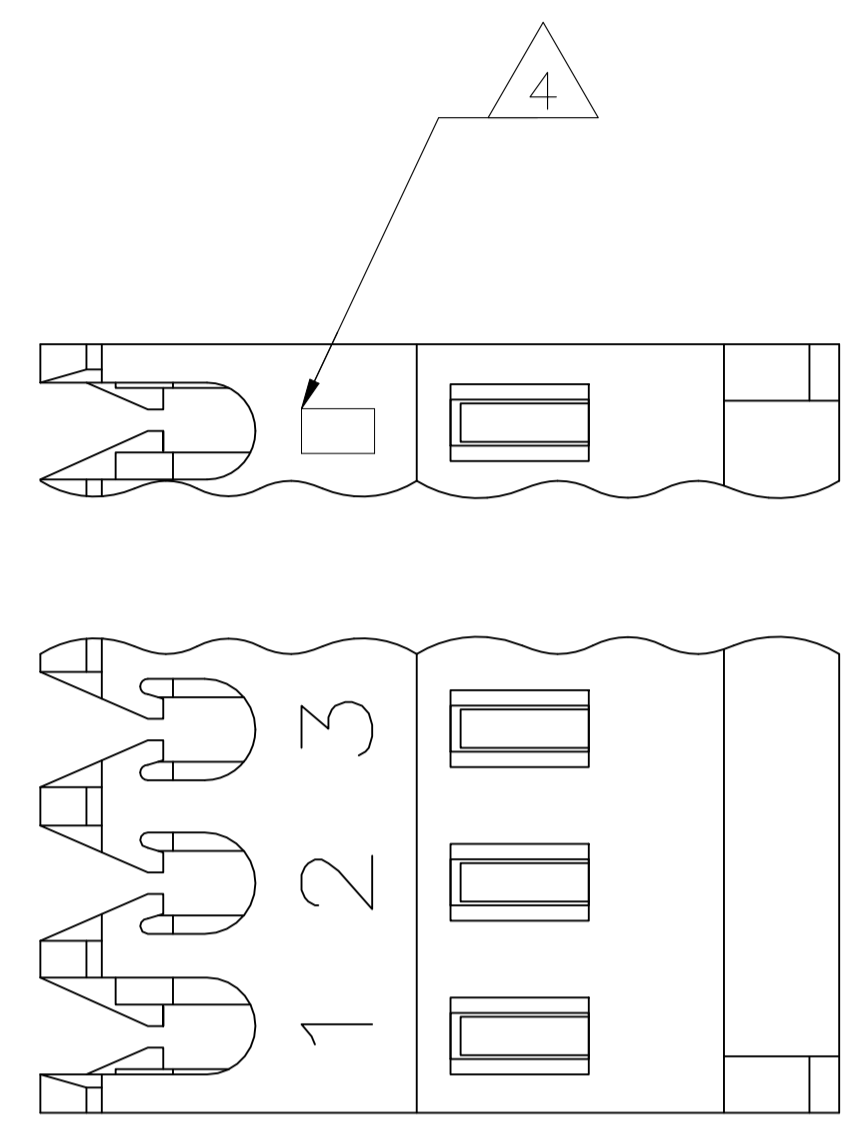


REVISIONS				
REV	DATE	DESCRIPTION	BY	APP'D
N1	05SEP2023	REVISED PER ECR-23-179060	AK	JP

- 1 MATERIAL: CONNECTOR - NYLON UL94V-2 (RED).
CONTACTS - 0.30[.012] THICK COPPER ALLOY
0.00076[.000030] GOLD OR 0.00076[.000030]
TOTAL GOLD FLASH OVER PALLADIUM NICKEL.
PER TE CONNECTIVITY'S DISCRETION, IN CONTACT AREA
WITH MATTE TIN SLOT AREA FOR 644702-2
THRU1-644702-6
OR MATTE WHISKER MITIGATED TIN FOR 3-644702-2
- 2 THRU 4-644702-6 OVER NICKEL UNDERPLATE.
- 3 CONTACTS ACCEPT 22 AWG WIRE WITH 1.52 [.060] MAX INSULATION DIAMETER.
- 4 CONTACTS MUST ACCEPT 0.64±0.03 [.025±.001] SQUARE POST AND REMAIN LOCKED IN POSITION.
- 5 IDENTIFICATION NUMBER FOR LAST CIRCUIT MAY NOT APPEAR ON ALL ASSEMBLIES.
- 6 DIMENSIONS IN BRACKETS ARE IN INCHES.
- 7 HOUSING FEATURES ARE: FEED THRU WITH LOCKING RAMP AND POLARIZING TAB.
- 8 OBSOLETE PARTS: OBSOLETE CIS STREAMLINING PER D.RENAUD/D.SINISI



FINISH	DIM A	NO. OF POSN	ASSEMBLY
TIN	40.64 [1.600]	16	4-644702-6
TIN	38.10 [1.500]	15	4-644702-5
TIN	35.56 [1.400]	14	4-644702-4
TIN	33.02 [1.300]	13	4-644702-3
TIN	30.48 [1.200]	12	4-644702-2
TIN	27.94 [1.100]	11	4-644702-1
TIN	25.40 [1.000]	10	4-644702-0
OBSOLETE	TIN	22.86 [.900]	9 -3-644702-9-
TIN	20.32 [.800]	8	3-644702-8
TIN	17.78 [.700]	7	3-644702-7
TIN	15.24 [.600]	6	3-644702-6
TIN	12.70 [.500]	5	3-644702-5
TIN	10.16 [.400]	4	3-644702-4
TIN	7.62 [.300]	3	3-644702-3
TIN	5.08 [.200]	2	3-644702-2
8 SUPERSEDED	TIN-LEAD	40.64 [1.600]	16 -1-644702-6-
8 SUPERSEDED	TIN-LEAD	38.10 [1.500]	15 -1-644702-5-
8 SUPERSEDED	TIN-LEAD	35.56 [1.400]	14 -1-644702-4-
8 SUPERSEDED	TIN-LEAD	33.02 [1.300]	13 -1-644702-3-
8 SUPERSEDED	TIN-LEAD	30.48 [1.200]	12 -1-644702-2-
8 SUPERSEDED	TIN-LEAD	27.94 [1.100]	11 -1-644702-1-
OBSOLETE	TIN	25.40 [1.000]	10 -644702-0-
OBSOLETE	TIN	22.86 [.900]	9 -644702-9-
OBSOLETE	TIN	20.32 [.800]	8 -644702-8-
OBSOLETE	TIN	17.78 [.700]	7 -644702-7-
8 SUPERSEDED	TIN-LEAD	15.24 [.600]	6 -644702-6-
8 SUPERSEDED	TIN-LEAD	12.70 [.500]	5 -644702-5-
8 SUPERSEDED	TIN-LEAD	10.16 [.400]	4 -644702-4-
8 SUPERSEDED	TIN-LEAD	7.62 [.300]	3 -644702-3-
8 SUPERSEDED	TIN	5.08 [.200]	2 -644702-2-

THIS DRAWING IS A CONTROLLED DOCUMENT.

DIN S. HOOVER 28-DEC-2004
CHK: D. BOSSI 28-DEC-2004
APP'D: D. BOSSI 28-DEC-2004

DIMENSIONS: mm [INCHES] TOLERANCES UNLESS OTHERWISE SPECIFIED:
0. PLC ±
1. PLC ±
2. PLC ± 0.13 [.005]
3. PLC ±
4. PLC ±
ANGLES ±

MATERIAL 1 FINISH 1

WEIGHT A1 00779 C=644702

CUSTOMER DRAWING SCALE 8:1 SHEET 1 of 1 REV N1

TE Connectivity
MTA .100 CONNECTOR ASSEMBLY, 22 AWG, STANDARD
108-1050
114-1019