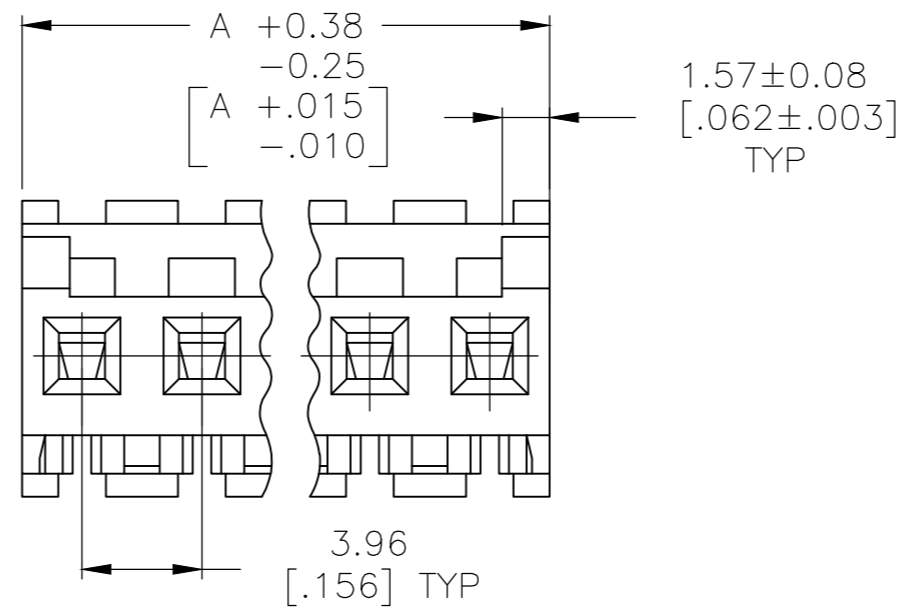
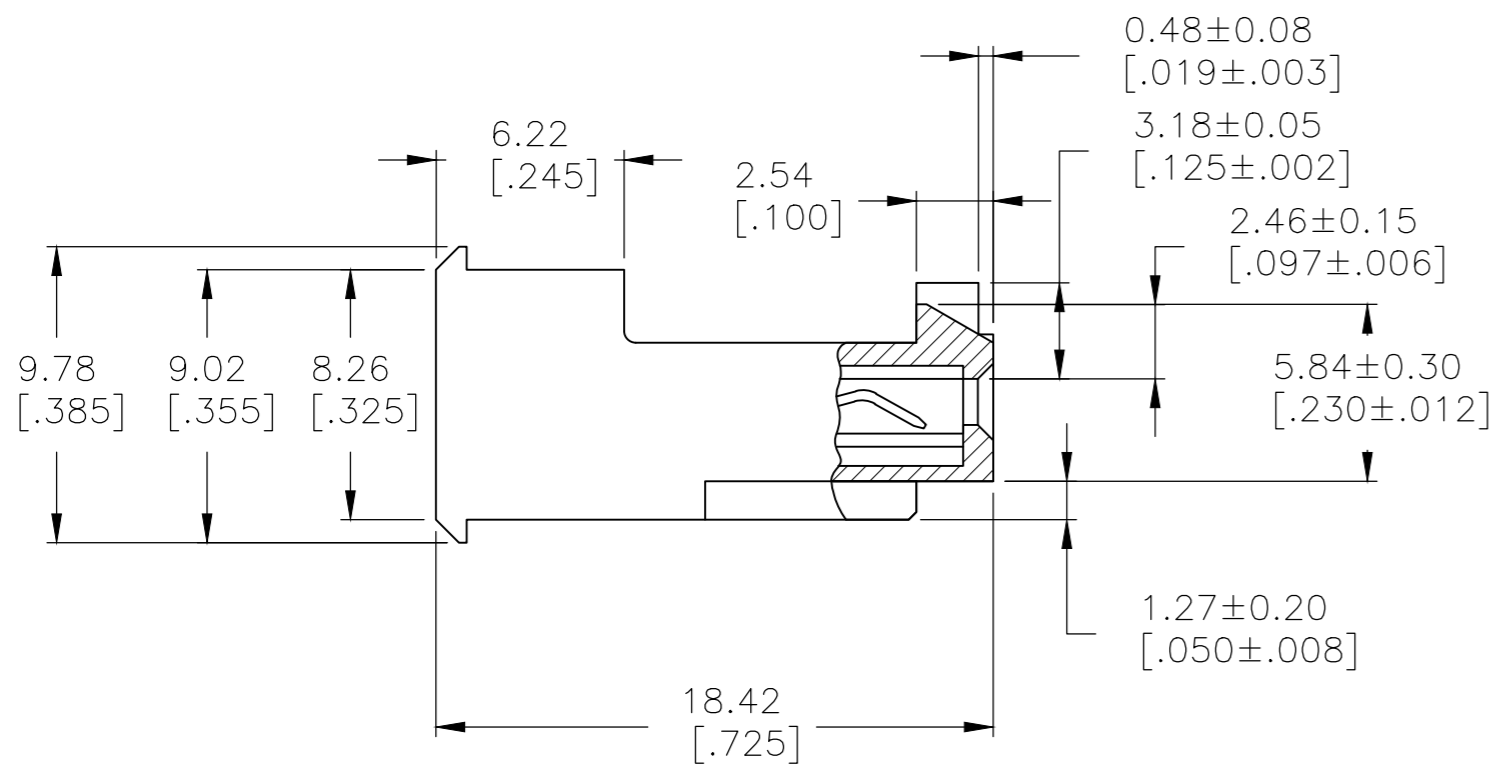
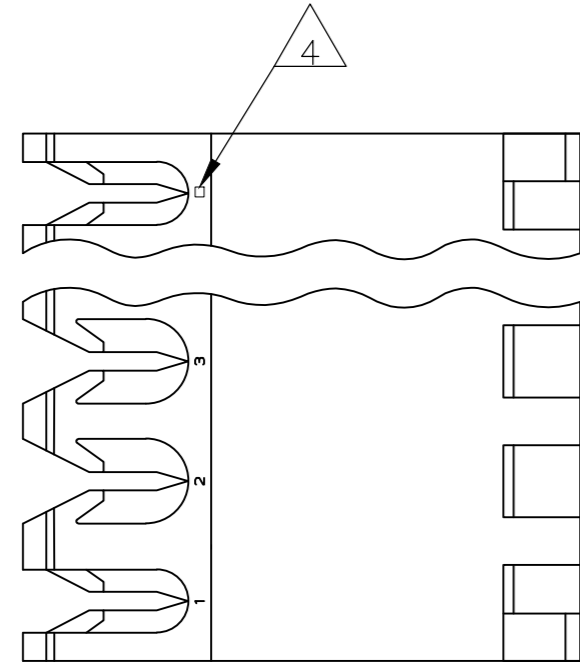


THIS DRAWING IS UNPUBLISHED. RELEASED FOR PUBLICATION
 © COPYRIGHT - By - TE CONNECTIVITY ALL RIGHTS RESERVED.

LOC	DIST	REVISIONS			
P	LTR	DESCRIPTION	DATE	DWN	APVD
CM	00	F	REVISED PER ECR-20-000814	26MAY2020	PC SW



55.47[2.184]	14	4-644465-4
51.51[2.028]	13	4-644465-3
47.55[1.872]	12	4-644465-2
43.59[1.716]	11	4-644465-1
39.62[1.560]	10	4-644465-0
35.66[1.404]	9	3-644465-9
31.70[1.248]	8	3-644465-8
27.74[1.092]	7	3-644465-7
23.77[.936]	6	3-644465-6
19.81[.780]	5	3-644465-5
15.85[.624]	4	3-644465-4
11.89[.468]	3	3-644465-3
7.92[.312]	2	3-644465-2
7 SUPERSEDED	14	1-644465-4
7 SUPERSEDED	13	1-644465-3
8 SUPERSEDED	12	1-644465-2
	11	1-644465-1
	10	1-644465-0
	9	644465-9
	8	644465-8
	7	644465-7
	6	644465-6
	5	644465-5
	4	644465-4
	3	644465-3
2	644465-2	

1 MATERIAL: CONNECTOR - NYLON UL94V-2 (ORANGE).
 CONTACTS - 0.30[.012] THICK COPPER ALLOY
 (BRIGHT TIN-LEAD 0.00203[.000080] MIN. THICK
 FOR CONTACTS 644465-2 THRU 1-644465-4)
 (WHISKER MITIGATED TIN 0.00203[.000080] MIN
 THICKNESS OVER NICKEL UNDERPLATE FOR
 3-644465-2 THRU 4-644465-4).

2 CONTACTS ACCEPT 18 AWG WIRE WITH 2.41[.095] MAX INSULATION DIAMETER.
 3 CONTACTS MUST ACCEPT 1.14±0.03[.045±.001] SQUARE POST AND REMAIN LOCKED IN POSITION.

4 IDENTIFICATION NUMBER FOR LAST CIRCUIT MAY NOT APPEAR ON ALL ASSEMBLIES.

5 DIMENSIONS IN BRACKETS ARE IN INCHES.

6 HOUSING FEATURES ARE: FEED-THRU WITH LOCKING RAMP AND POLARIZING TAB.

7 OBSOLETE PARTS: OBSOLETE CIS STREAMLINING PER D.RENAUD/D.SINISI

8 OBSOLETE PARTS

	DIM A	NO. OF CIRCUITS	PART NO.
7 SUPERSEDED	55.47[2.184]	14	1-644465-4
7 SUPERSEDED	51.51[2.028]	13	1-644465-3
8 SUPERSEDED	47.55[1.872]	12	1-644465-2
	43.59[1.716]	11	1-644465-1
	39.62[1.560]	10	1-644465-0
	35.66[1.404]	9	644465-9
	31.70[1.248]	8	644465-8
	27.74[1.092]	7	644465-7
	23.77[.936]	6	644465-6
	19.81[.780]	5	644465-5
	15.85[.624]	4	644465-4
	11.89[.468]	3	644465-3
7.92[.312]	2	644465-2	

THIS DRAWING IS A CONTROLLED DOCUMENT.		DWN S. CARPENTER 14AUG2003		
DIMENSIONS: mm [INCHES]		CHK D. BOSSI 14AUG2003		
TOLERANCES UNLESS OTHERWISE SPECIFIED:		APVD D. BOSSI 14AUG2003	NAME MTA 156 CONNECTOR ASSEMBLY, 18 AWG, STANDARD	
0 PLC ± -	1 PLC ± -	PRODUCT SPEC 108-1051	SIZE A2	CAGE CODE 00779
2 PLC ± -	3 PLC ± 0.13 [.005]	APPLICATION SPEC 114-1020	DRAWING NO C-644465	RESTRICTED TO -
4 PLC ± -	ANGLES ± -	WEIGHT	SCALE 4:1	SHEET 1 OF 1
MATERIAL 1	FINISH 1	CUSTOMER DRAWING	REV F	