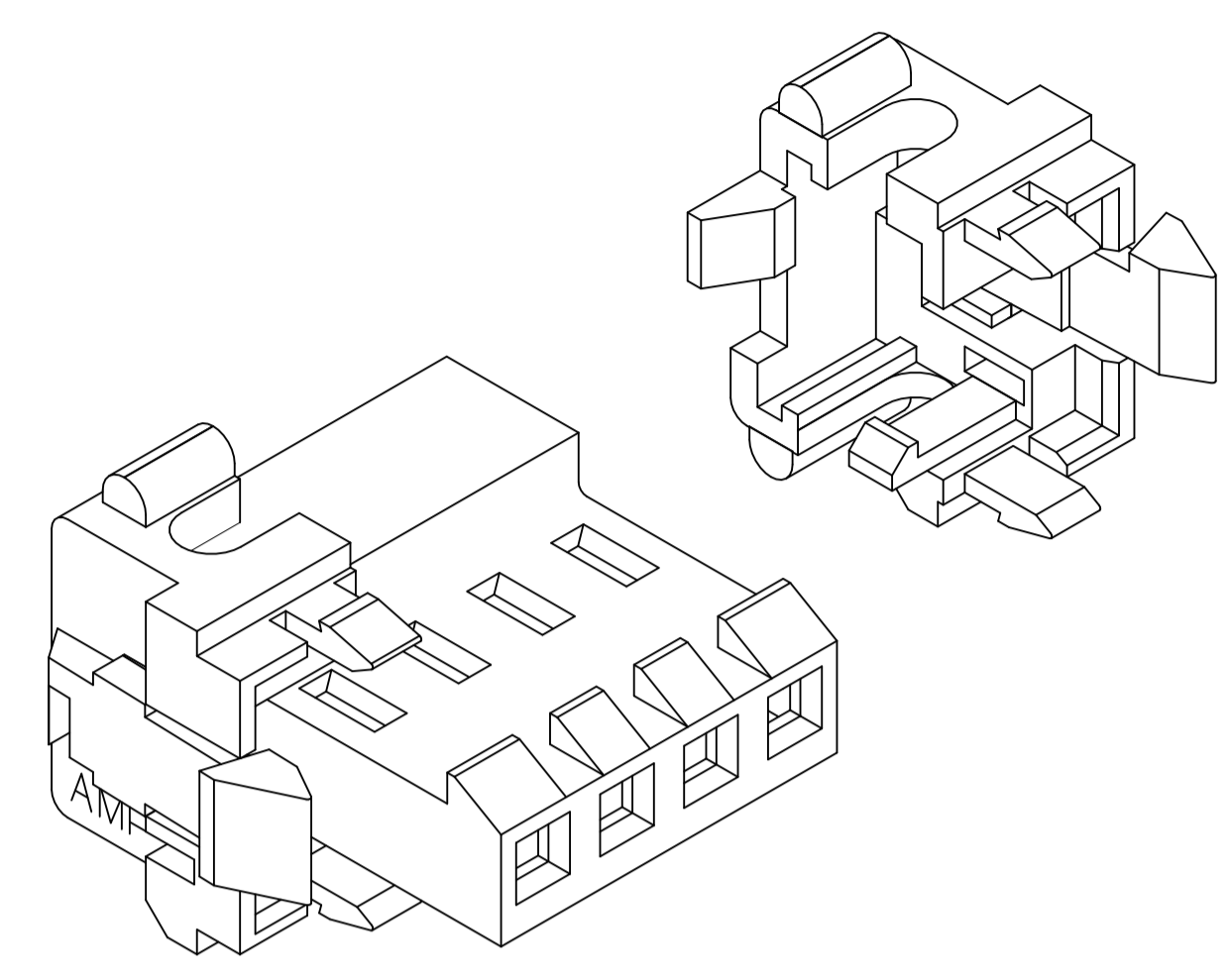
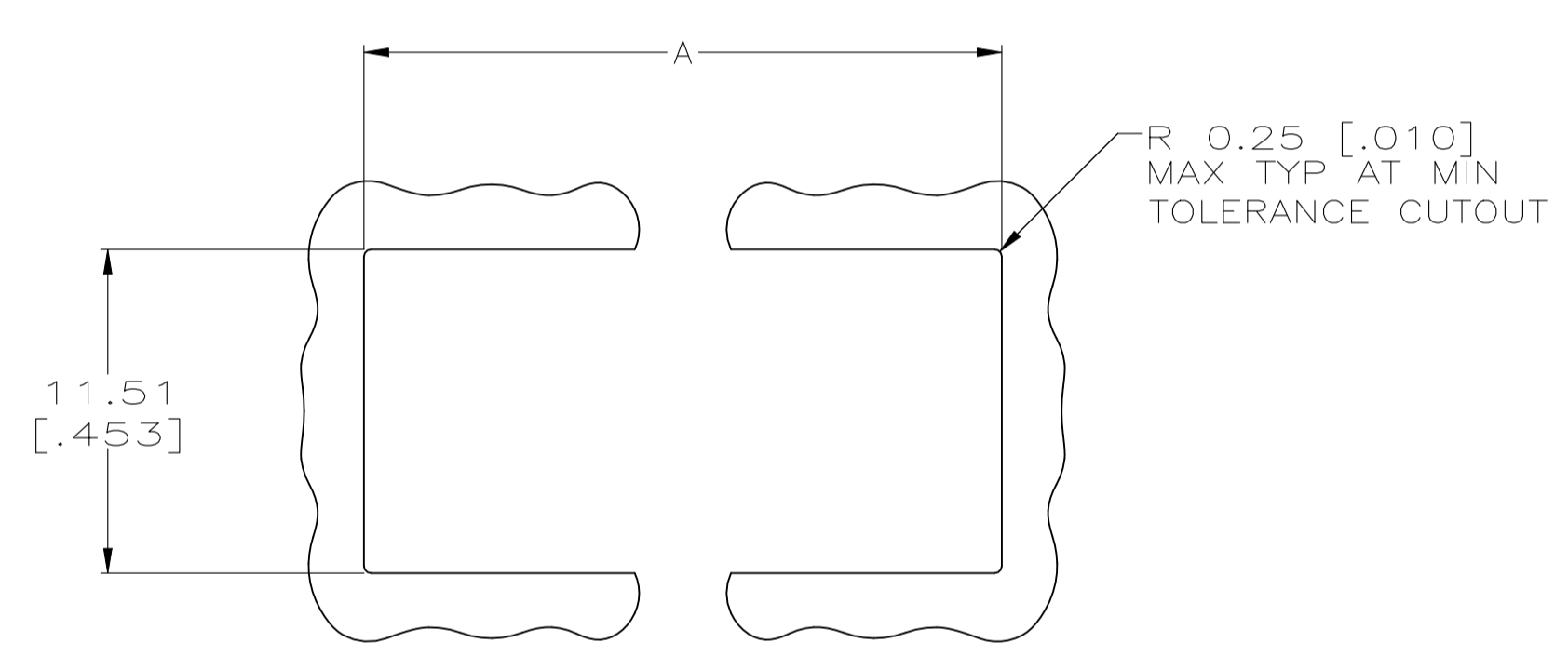


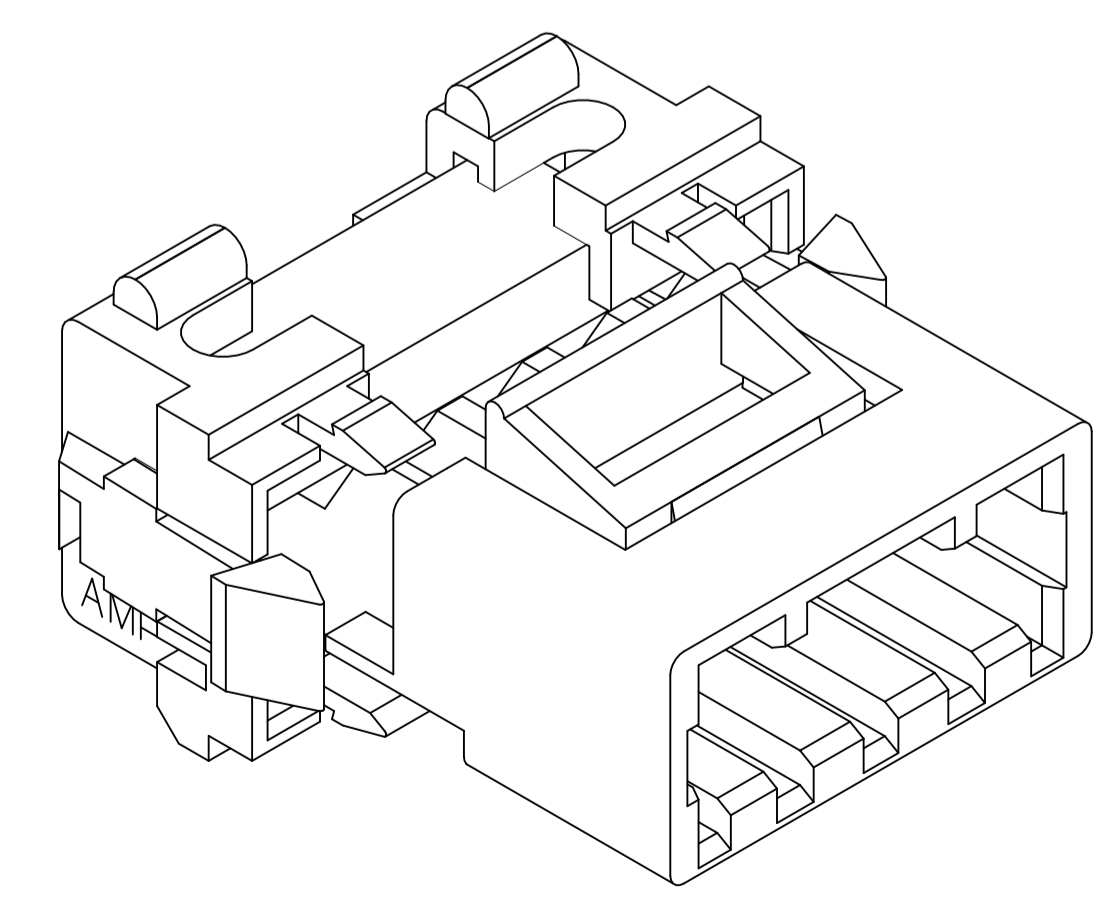
REVISIONS					
P	LTR	DESCRIPTION	DATE	DN	APVD
H1		REVISED PER ECR-22-151273	26SEP2022	JP	VS



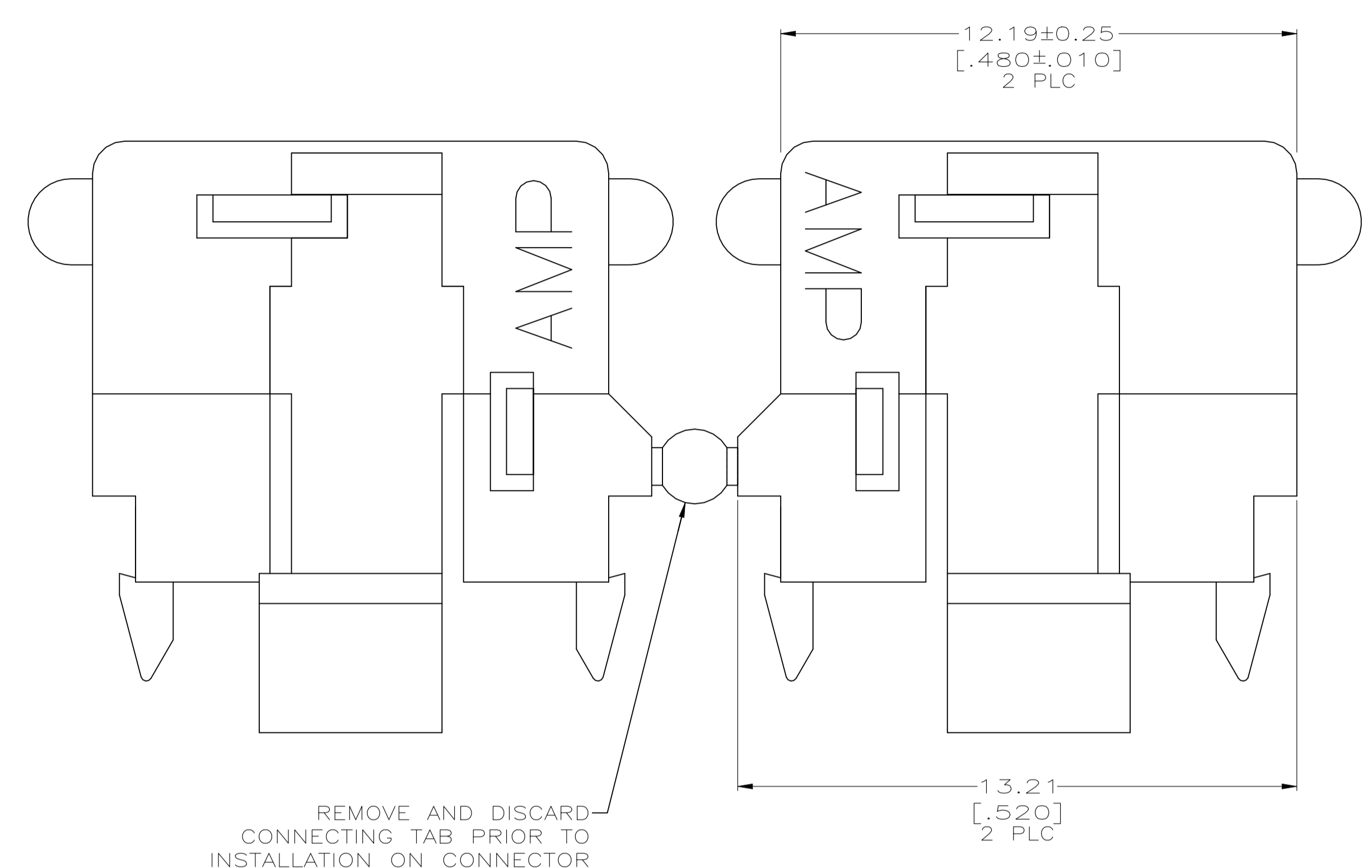
MTA 156 WIRE TO POST CONNECTOR WITH END CAPS INSTALLED
(RECOMMENDED APPLICATION)



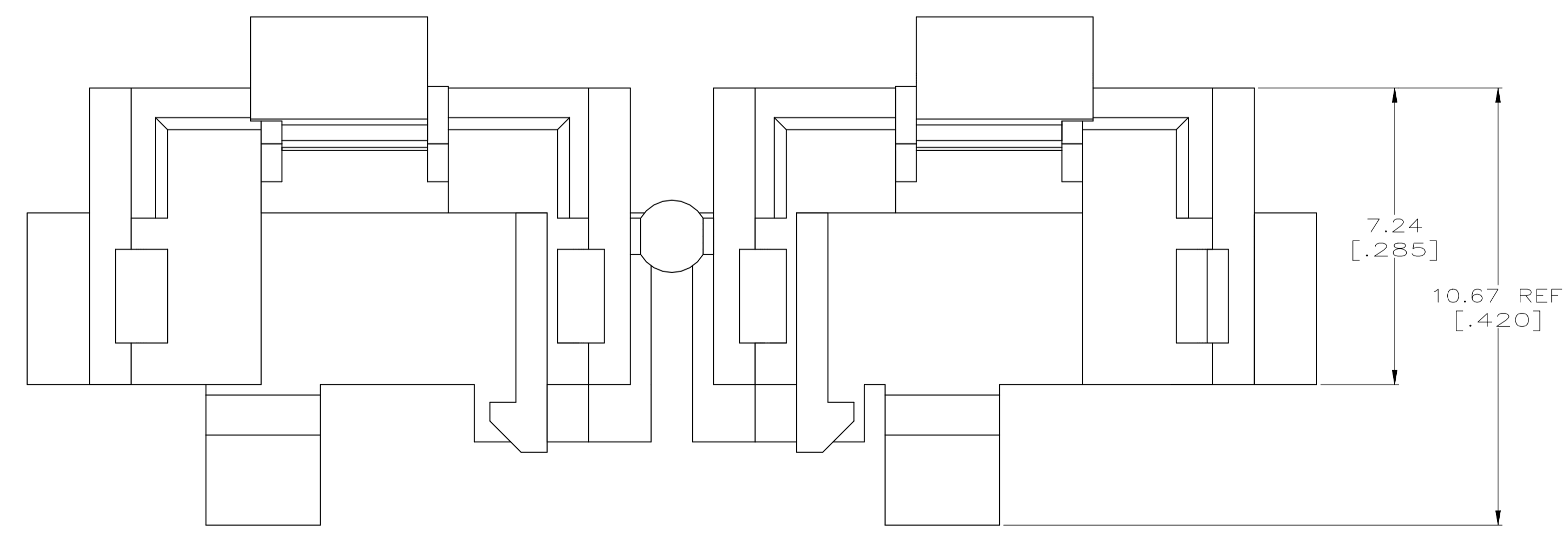
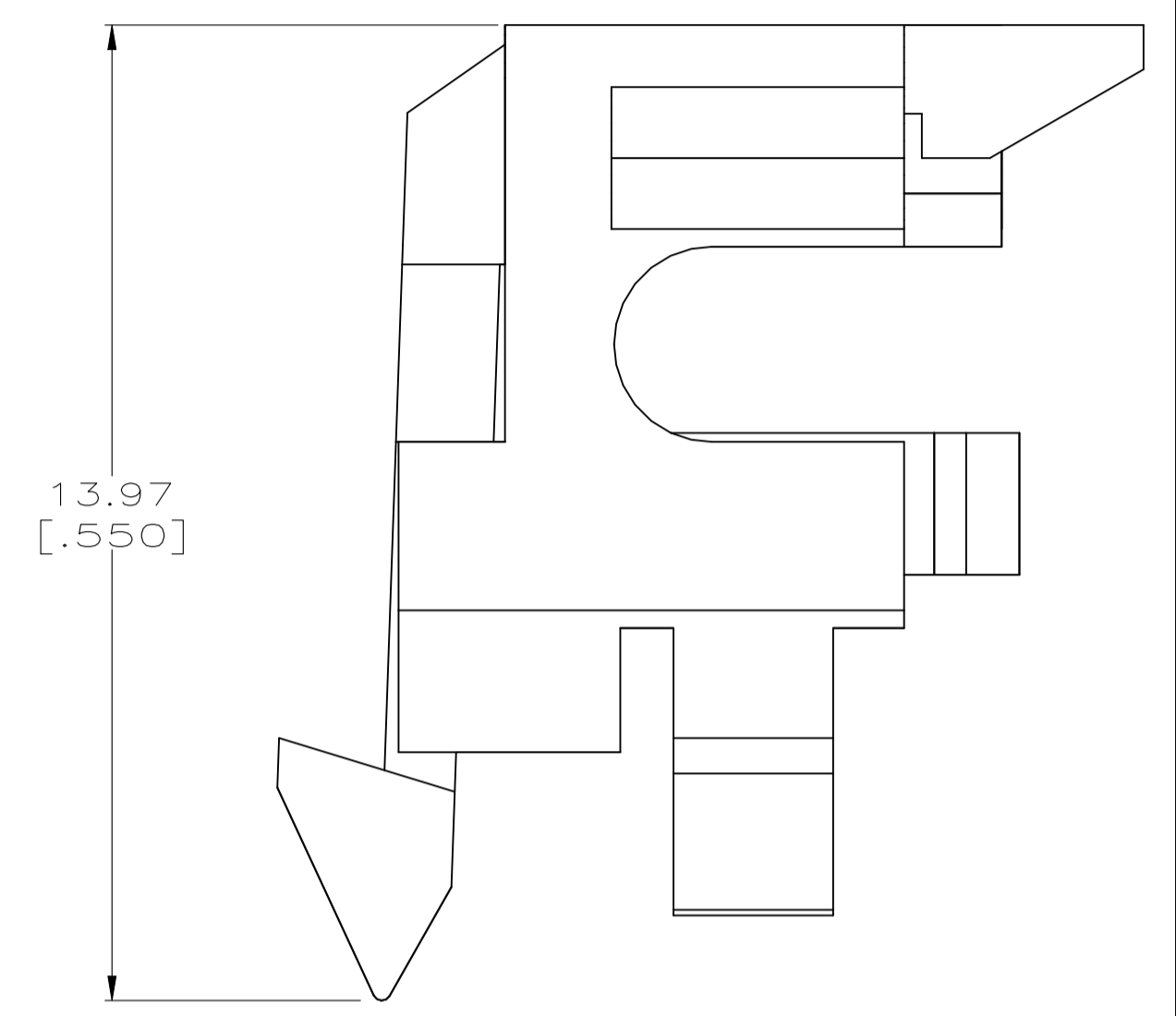
RECOMMENDED PANEL CUTOUT
PANEL THICKNESS : 1.70 [.067] MAX
SCALE 4:1



MTA 156 POSTED CONNECTOR WITH END CAPS INSTALLED
(ALTERNATE APPLICATION)



REMOVE AND DISCARD
CONNECTING TAB PRIOR TO
INSTALLATION ON CONNECTOR



1. DIMENSIONS IN BRACKETS
ARE IN INCHES.
RESTRICTED TO CUSTOMER 'MMPCO'

	12 POSITION	9 POSITION	6 POSITION	4 POSITION	3 POSITION	24 POSITION	15 POSITION	CONNECTOR SIZE
	54.36 [2.140]	42.47 [1.672]	30.58 [1.204]	22.66 [.892]	18.69 [.736]	101.90 [4.012]	66.24 [2.608]	A
								A

THIS DRAWING IS A CONTROLLED DOCUMENT.

DIMENSIONS: INCHES	TOLERANCES UNLESS OTHERWISE SPECIFIED: 0. PLC ± - 1. PLC ± - 2. PLC ± - 3. PLC ± 0.13 [.005] 4. PLC ± - ANGLES ± -	DIN - CHK - APVD -	NAME PRODUCT SPEC APPLICATION SPEC
MATERIAL NYLON,UL 94V-2	FINISH -	WEIGHT 0.000000	SIZE A1
CUSTOMER DRAWING		SCALE 10:1	SHEET 1 of 1

REMARK: 641440-1 PART NUMBER

STE TE Connectivity

END CAP, PANEL MOUNTING, MTA 156

00779 641440

REV H1