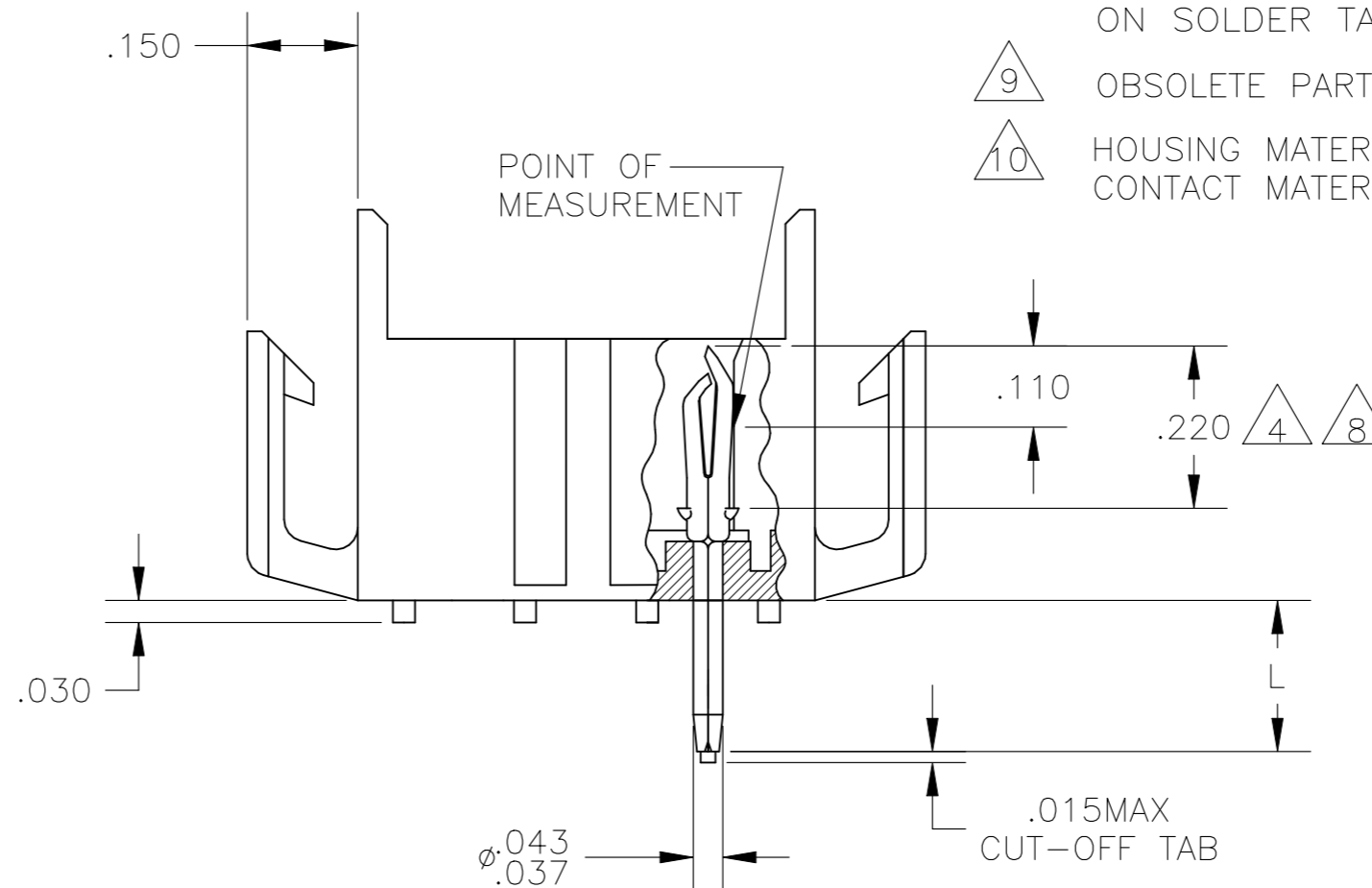
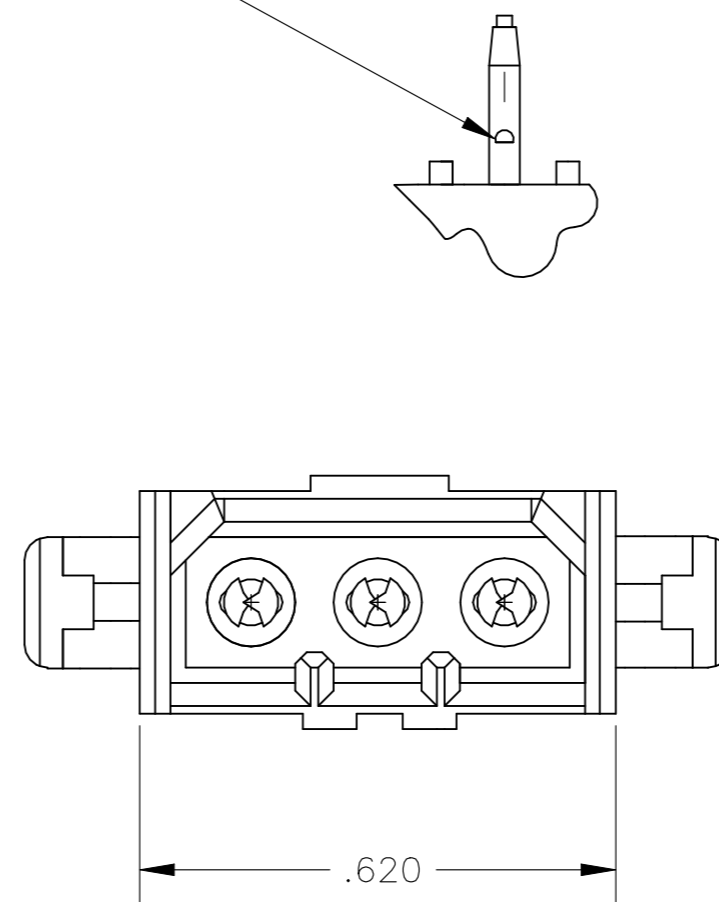
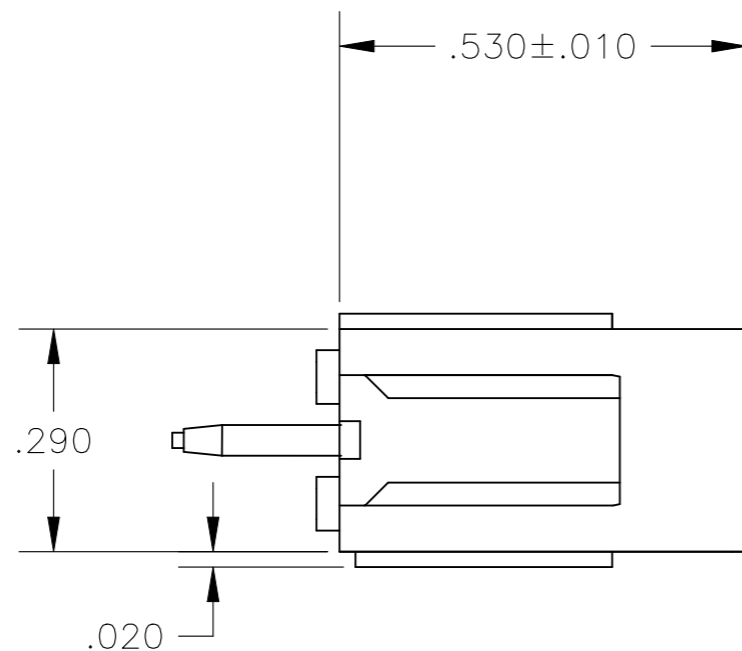
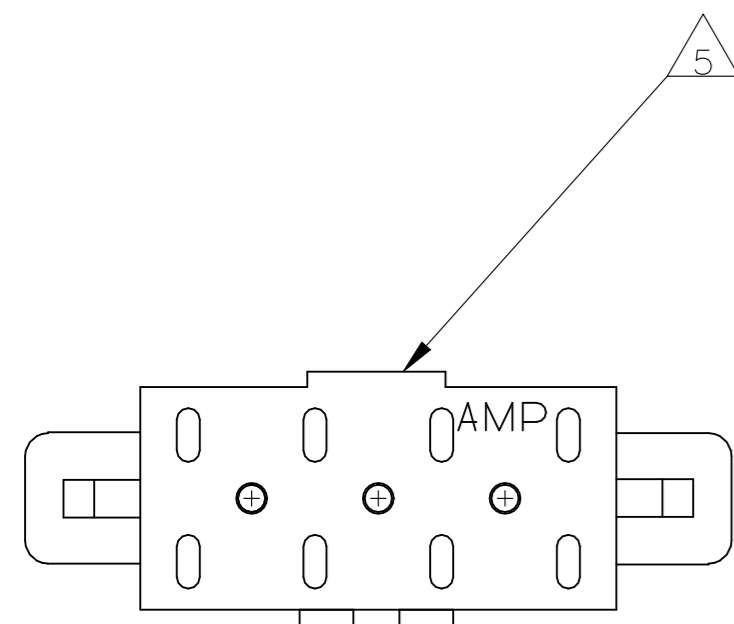
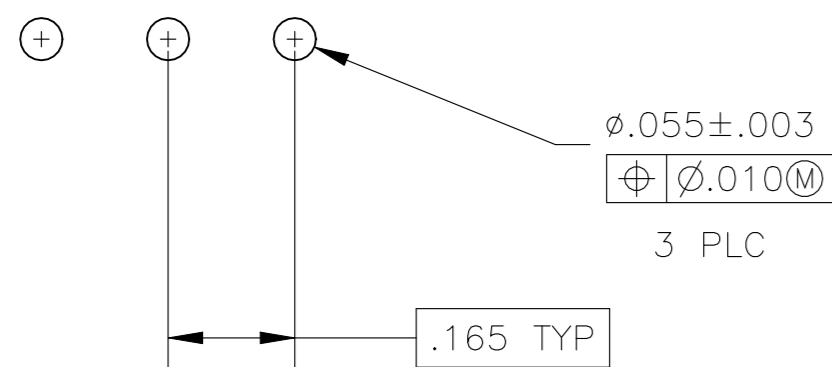


REVISIONS					
P	LTR	DESCRIPTION	DATE	DWN	APVD
S		REVISED PER ECO-21-006864	10AUG2021	RK	MZ

ANTI SOLDER WICKING TAB



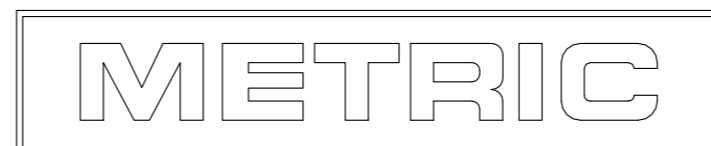
1. FITS SOCKET HOUSING 640518.
2. ASSEMBLY CONFORMS TO AMP SOLDERABILITY SPEC. 109-11-3.
3. FOR USE WITH .063 THICK P.C. BOARD.
4. CONTACT IS PLATED OVERALL WITH .000050 NICKEL, THEN .000030 GOLD OVER CONTACT LENGTH INDICATED AND .000150 MATTE TIN-LEAD ON SOLDER TAIL END.
5. UL AND CSA LOGO LOCATED ON THIS SURFACE.
6. FOR USE WITH .120 THICK P.C. BOARD.
7. FOR USE WITH .093 THICK P.C. BOARD.
8. CONTACT IS PLATED OVERALL WITH .000050 NICKEL, THEN .000030 GOLD OVER CONTACT LENGTH INDICATED AND .000150 MATTE TIN ON SOLDER TAIL END.
9. OBSOLETE PARTS: OBSOLETE CIS STREAMLINING PER D.RENAUD/D.SINIS
10. HOUSING MATERIAL: PA66, BLACK, UL 94 V-0 RATED
CONTACT MATERIAL: PHOSPHOR BRONZE



RECOMMENDED P.C. BOARD LAYOUT

.020	0.51	.165	4.19	-	-
.015	0.38	.150	3.81	-	-
.010	0.25	.110	2.79	.620	15.75
.008	0.20	.063	1.60	.530	13.46
.005	0.13	.055	1.40	.290	7.37
.003	0.08	.043	1.09	.220	5.59
.000050	0.00127	.037	0.94	.210	5.33
.000030	0.00076	.030	0.76	.180	4.57
IN	MM	IN	MM	IN	MM

CONVERSION TABLE



THIS DRAWING IS A CONTROLLED DOCUMENT.

DIMENSIONS:	TOLERANCES UNLESS OTHERWISE SPECIFIED:	DWN	J. HUFFMAN	27APR98
INCHES		CHK	R. SWING	27APR98
	0 PLC ± -	APVD	T. BEDDICK	27APR98
	1 PLC ± -	PRODUCT SPEC		
	2 PLC ± -	APPLICATION SPEC		
	3 PLC ± .005	WEIGHT		
	4 PLC ± -	CUSTOMER DRAWING		
	ANGLES ± 0°30'	SCALE	4:1	SHEET
MATERIAL	FINISH	SEE TABLE		

9	OBSOLETE	.180	7	GOLD	8	2-640498-6
		.210	6	GOLD	8	2-640498-4
		.150	3	GOLD	8	2-640498-2
9	OBSOLETE	.180	7	GOLD	4	640498-6
		.210	6	GOLD	4	640498-4
		.210	6	PRE-TIN		640498-3
		.150	3	GOLD	4	640498-2
		.150	3	PRE-TIN		640498-1
		"L" +.010 -.020		PIN FINISH		PART NUMBER

		NAME	
		HEADER ASSEMBLY, PIN, 3 POSITION, MR.	
SIZE	A2	CAGE CODE	00779
DRAWING NO	C=640498	RESTRICTED TO	-
SCALE	4:1	SHEET	1 of 1
REV	S		