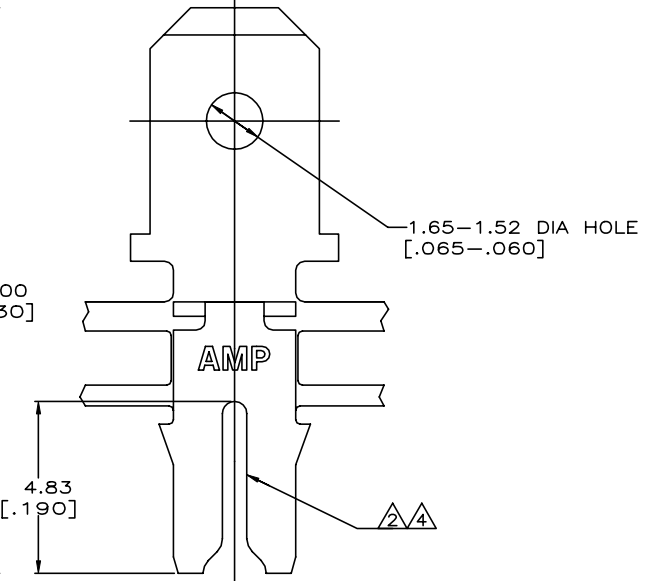
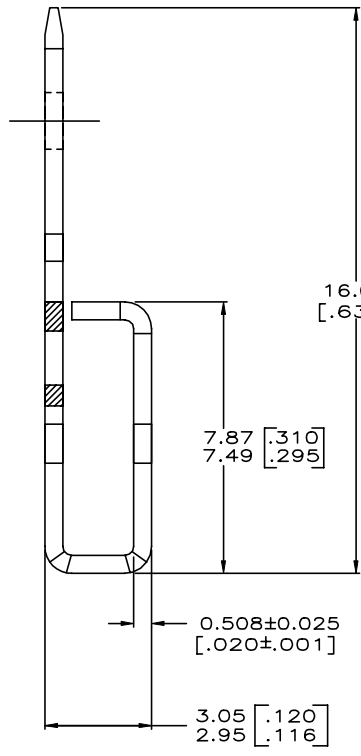
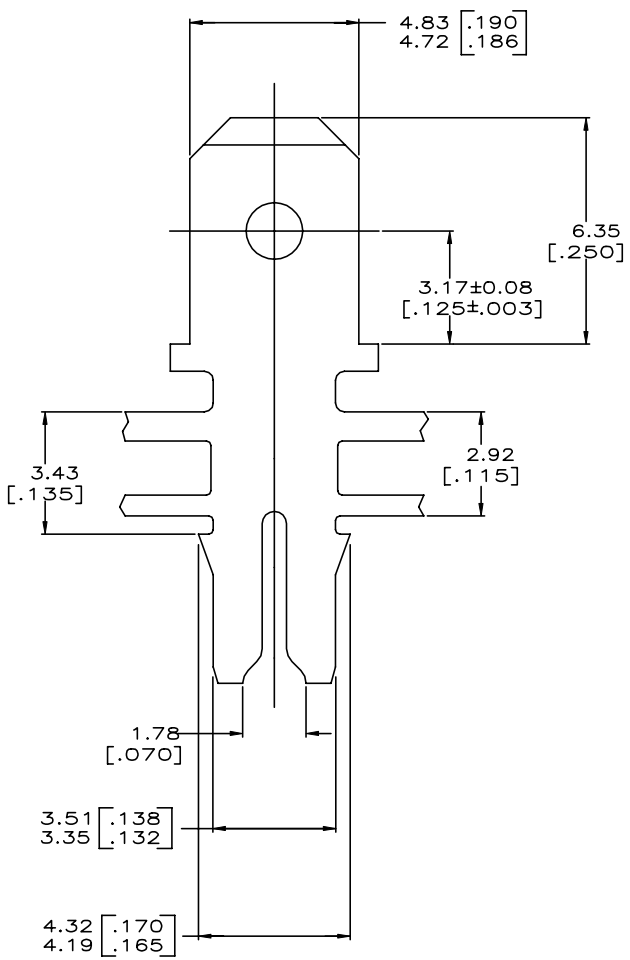
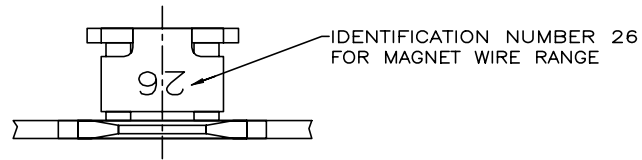


LOC	DIST	P	F	ZONE	LTR	DESCRIPTION	DATE	APPD
AF	50					C2 REVISED PER ECR-22-160834	09DEC22	PC/TD

- 1 CONTINUOUS STRIP ON REELS WITH TERMINALS LOCATED ON 8.38 ± 0.08 [$.330 \pm .003$] CENTERS.
- 2 SLOT TERMINATES A SINGLE $0.81-1.02\text{mm}$ [#20-#18] AWG BARE SOLID COPPER WIRE.
- 3 AFTER INSERTION INTO PLASTIC HOLDER TAB PORTION MUST BE BENT OVER 45° TO 90° OR POTTED-IN TO PREVENT PULL-OUT WHEN MATING RECEPTACLE IS DISCONNECTED.
- 4 SLOT ALSO TERMINATES A SINGLE 0.81mm [#20] AWG OR A 0.81 [$.032$] DIA COPPER CLAD STEEL WIRE PER ASTM B452-67 CLASS 40 A.



63670-1
PART NO

DO NOT SCALE PRINT. UNLESS SPECIFIED DIMENSIONS IN mm [INCHES] TOLERANCES ON : 2 PLC DEC ± 0.25 [.010] 3 PLC DEC ± - ANGLES ± -	DR 9/4/92 MICHAEL S. FEHER		NAME TERMINAL, TAB, 4.75 [.187] FASTON, MAG-MATE		
	CHK 9/7/92 JEFF R. RUTH				APPD 9/15/92 NELSON E. NEFF
MATERIAL H03 BRASS	APPD 9/15/92 TERRY L. SHUTTER				PRODUCT SPEC 108-2012
FINISH TIN PLATE	APPLICATION SPEC 114-2046				WEIGHT -
		SIZE C 00779	CAGE CODE C=63670	DRAWING NO C=63670	
		SCALE 10:1	SHEET 10F 1		

THIS DRAWING IS A CONTROLLED DOCUMENT FOR AMP INCORPORATED. IT IS SUBJECT TO CHANGE AND THE CONTROLLING ENGINEERING ORGANIZATION SHOULD BE CONTACTED FOR THE LATEST REVISION.