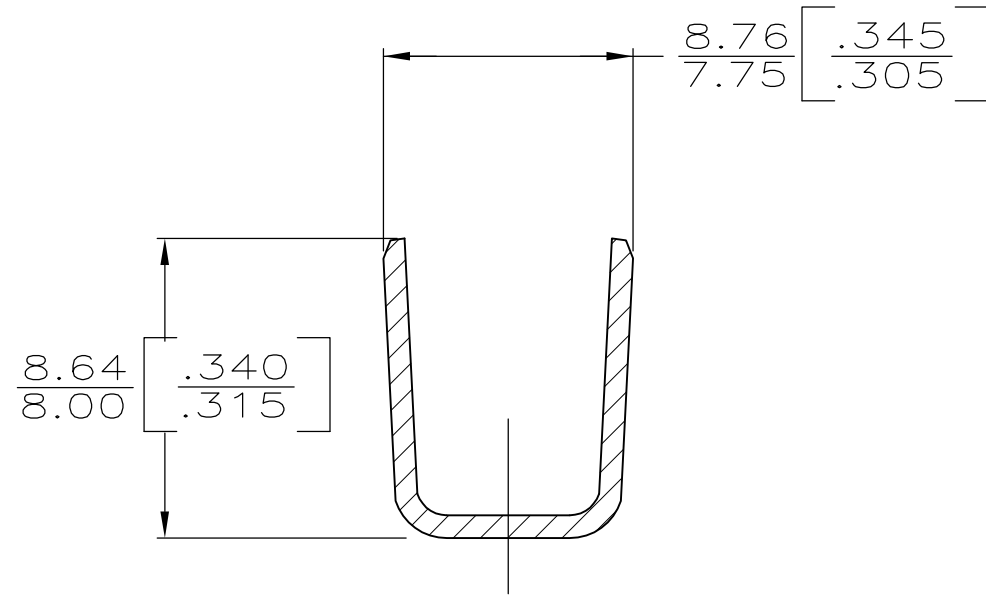
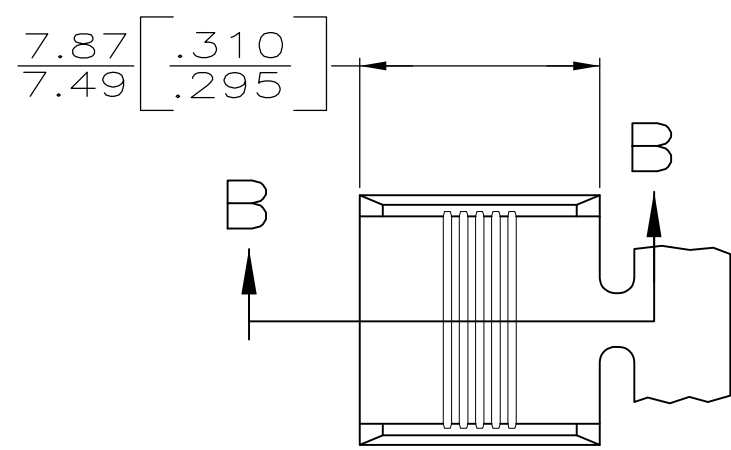
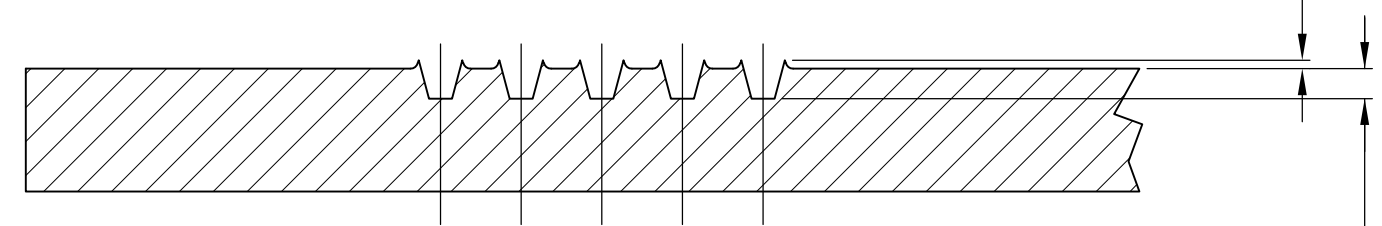
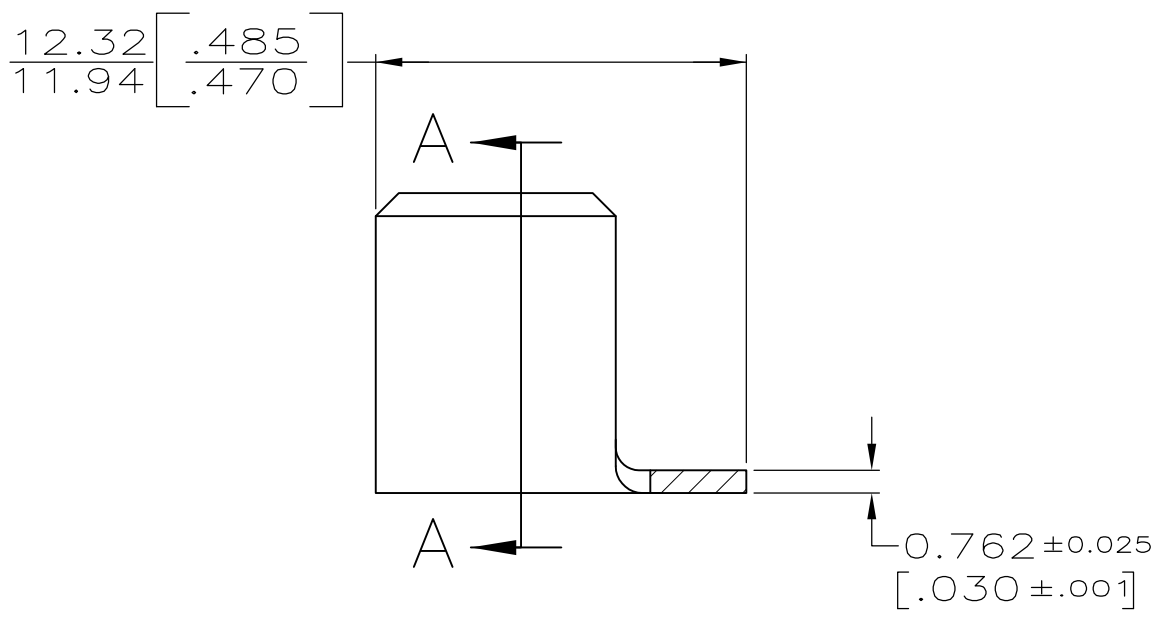


THIS DRAWING IS UNPUBLISHED. RELEASED FOR PUBLICATION
 © COPYRIGHT - By - ALL RIGHTS RESERVED.

LOC	DIST	REVISIONS					
AF	50	P	LTR	DESCRIPTION	DATE	DWN	APVD
			H	REVISED PER ECR-13-003819	06AUG13	GRZ	DZ



SECTION A-A



SECTION B-B
SCALE 20:1

0.229 [.0090]
0.178 [.0070]

1 PRODUCT PROVIDED IN STRIP FORM ON REELS;
BREAKS MAY BE PRESENT.

2 CRIMP WIDTH: .300, F TYPE (AMPLIVAR THRU)
 CRIMP HEIGHT ±.002 = (TOTAL CMA + 44,500) / 510,200
 GENERAL APPLICATION GUIDELINES MUST BE FOLLOWED
 AS SPECIFIED IN CATALOG #82221
 FOR APPLICATOR INFORMATION CALL: 1-800-722-1111
 FOR PRODUCT INFORMATION CALL: 1-800-522-6752

10,400 TO 22,900 CMA	63562-1
2 WIRE RANGE	PART NO

THIS DRAWING IS A CONTROLLED DOCUMENT.		DWN D.K. SCHRUM 11/30/89	TE Connectivity			
DIMENSIONS: INCHES		CHK M.S. FEHER 12/6/89				
TOLERANCES UNLESS OTHERWISE SPECIFIED:		APVD D. SCHWENK 12/8/89	NAME SPLICE, AMPLIVAR 5 SERRATION			
0 PLC ± - 1 PLC ± - 2 PLC ± - 3 PLC ± 0.25 [.010] 4 PLC ± - ANGLES ± -		PRODUCT SPEC -	APPLICATION SPEC -			
MATERIAL BRASS	FINISH TIN PLATE	WEIGHT -	SIZE A3	CAGE CODE 00779	DRAWING NO C-63562	RESTRICTED TO -
CUSTOMER DRAWING			SCALE 4:1	SHEET 1 OF 1	REV H	