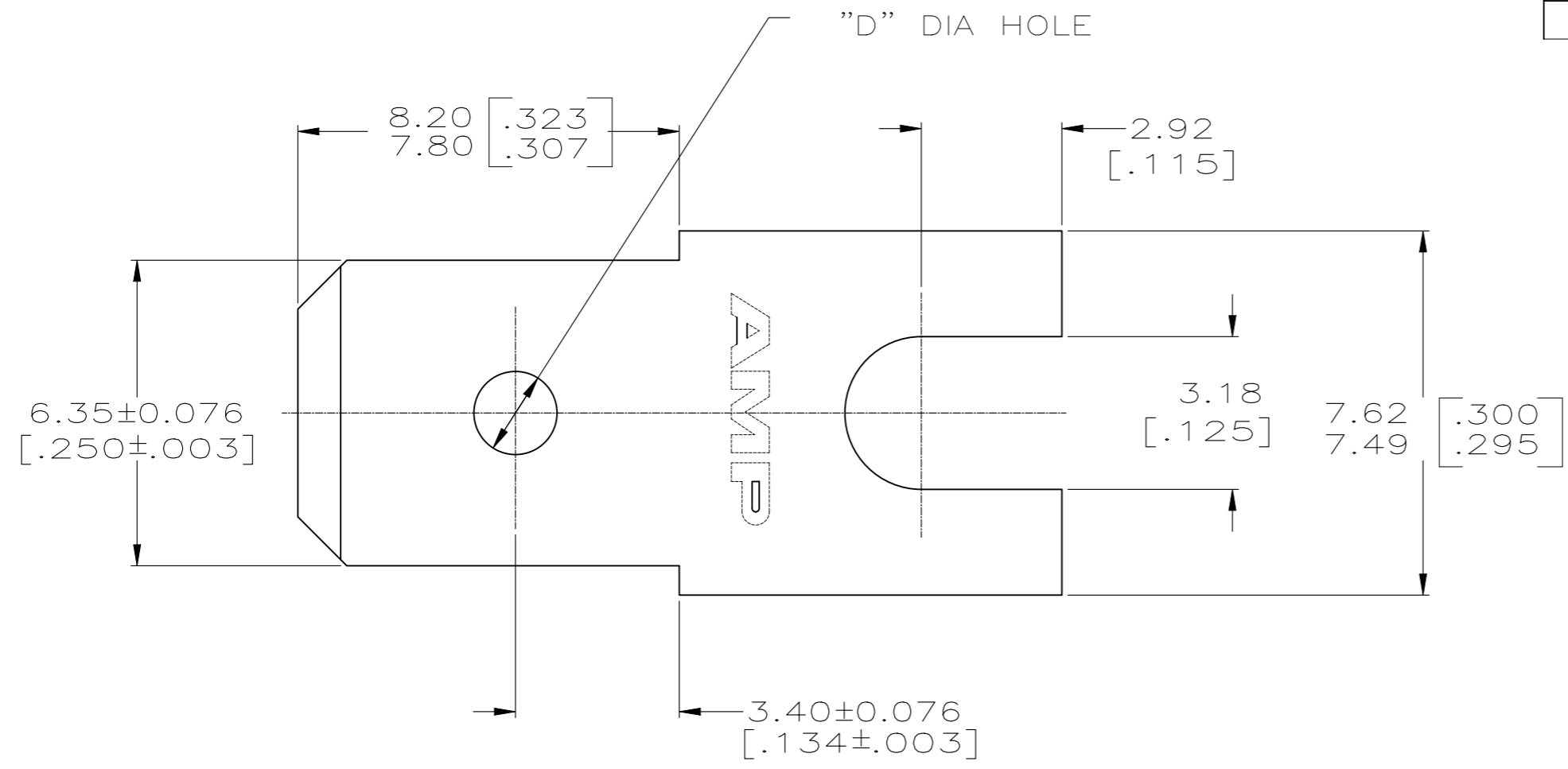
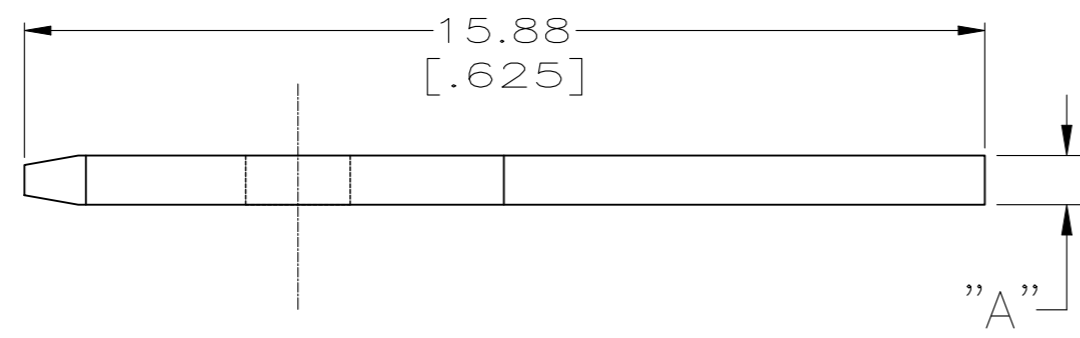


REVISIONS				
P	LTR	DESCRIPTION	DATE	APVD
	N8	REVISED PER ECR-25-248302	22JUN2025	AG DH



- 1 SUPPLIED IN LOOSE PIECE
- △2 PRELIMINARY—NOT FOR PRODUCTION
- △3 NICKEL PLATED
- △4 TIN PLATED



[.070/.065]	0.63[.025]	△4	BRASS	63274-8
[.070/.065]	0.81[.032]	△3	STEEL	△2 63274-7
[.070/.065]	0.81[.032]	△3	BRASS	△2 63274-6
[.070/.065]	0.81[.032]	△4	BRASS	63274-5
[.070/.065]	0.63[.025]		BRASS	63274-4
2.44/2.29 [.096/.090]	0.81[.032]		BRASS	63274-3
2.03/1.65 [.080/.065]	0.81[.032]		STEEL	63274-2
	0.81[.032]		BRASS	63274-1
"DIM D"	"DIM A"		MATERIAL	PART NO.

THIS DRAWING IS A CONTROLLED DOCUMENT.		DWN JR RUTH 7/30/96	<b>STE</b> TE Connectivity													
		CHK MS FEHER 7/30/96														
DIMENSIONS: mm [INCHES]		APVD P DESANTIS 7/30/96	NAME TEST-TAB, FASTON, 6.35 [.250] SERIES													
TOLERANCES UNLESS OTHERWISE SPECIFIED:		PRODUCT SPEC	-													
<table border="0"> <tr><td>0 PLC</td><td>± -</td></tr> <tr><td>1 PLC</td><td>± -</td></tr> <tr><td>2 PLC</td><td>± 0.25 [.010]</td></tr> <tr><td>3 PLC</td><td>± -</td></tr> <tr><td>4 PLC</td><td>± -</td></tr> <tr><td>ANGLES</td><td>± -</td></tr> </table>		0 PLC	± -	1 PLC	± -	2 PLC	± 0.25 [.010]	3 PLC	± -	4 PLC	± -	ANGLES	± -	APPLICATION SPEC	-	
0 PLC	± -															
1 PLC	± -															
2 PLC	± 0.25 [.010]															
3 PLC	± -															
4 PLC	± -															
ANGLES	± -															
MATERIAL SEE TABLE	FINISH NONE	WEIGHT 0.000000	SIZE A3	CAGE CODE 00779												
		DRAWING NO C-63274	RESTRICTED TO -													
CUSTOMER DRAWING		SCALE 8:1	SHEET 1 OF 1	REV N8												