

SPECIFICATIONS

ELECTRICAL

RESISTANCE: 10KΩ ±10%
 ELECTRICAL ANGLE: 340°
 CONTINUITY ANGLE: 352°MIN
 LINEARITY: INDEPENDENT, 0.5%
 MINIMUM VOLTAGE: 0.1% MAX
 RESOLUTION: VIRTUALLY INFINITE
 OUTPUT SMOOTHNESS: 0.1% MAX
 RESISTANCE TEMPERATURE COEFFICIENT: ±400 PPM/°C MAX
 POWER RATING: 1.5 WATT MAX @ 70°C,
 DERATED TO 0.0 WATT @ 125°C
 WIPER CONTACT CURRENT: 10 MILLIAMPS MAX
 DIELECTRIC STRENGTH: 1000 VRMS @ 60 Hz
 INSULATION RESISTANCE: 100 MEG OHMS @ 500 VDC

MECHANICAL

ROTATION: CONTINUOUS 360°
 WEIGHT, (1 GANG): 2.0 OZ MAX
 MECH BACKLASH: <0.1°
 START TORQUE: 0.3 OZ-IN MAX,
 RUNNING TORQUE: 0.2 OZ-IN MAX
 PILOT RUNOUT: 0.001 T.I.R.
 SHAFT RUNOUT: 0.001 T.I.R.
 SHAFT END PLAY: 0.003 MAX
 SHAFT RADIAL PLAY: 0.001 T.I.R.
 LATERAL RUNOUT: 0.002 T.I.R.

ENVIRONMENTAL

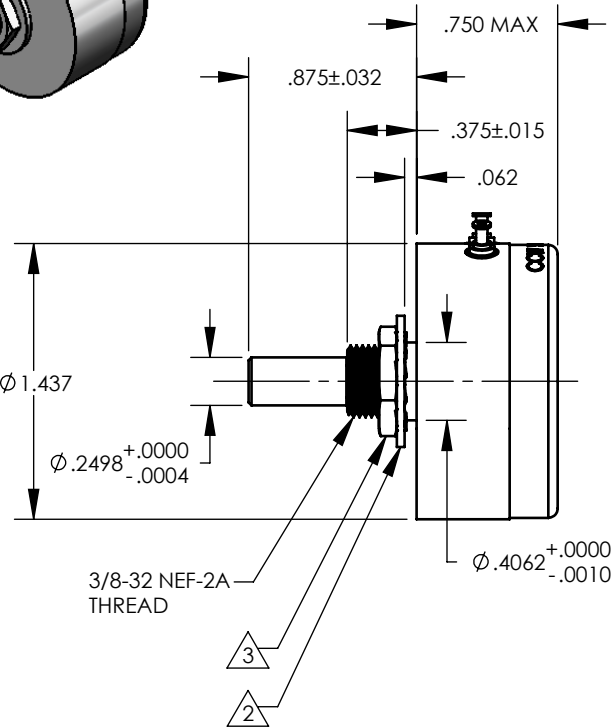
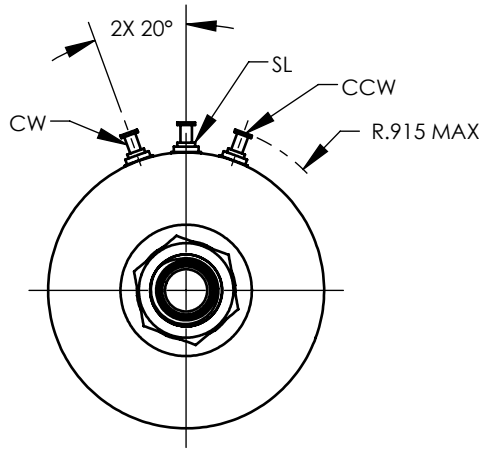
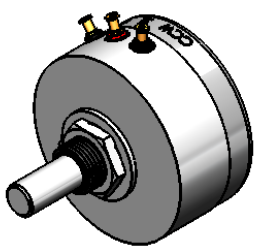
OPERATING TEMPERATURE: -65°C TO +125°C
 ROTATIONAL LIFE: 50 MILLION CYCLE MIN
 DITHER LIFE: 50 MILLION CYCLES @ 60HZ OVER 5°
 SHOCK: SAWTOOTH 100G PEAK PER MIL-STD-202
 METHOD 213, TEST CONDITION I
 VIBRATION: HIGH FREQ; SWEPT 10 - 2000HZ, 15G PEAK
 PER MIL-STD-202 TEST CONDITION B

MATERIALS

HOUSING AND COVER: ANODIZED ALUMINUM
 SHAFT: PASSIVATED CENTERLESS GROUND SST
 BEARINGS: PRECISION BALL
 ROTOR: BERYLLIUM COPPER
 CONTACTS: MULTI-FINGER PRECIOUS METAL
 ELEMENT: CO-MOLDED CONDUCTIVE PLASTIC
 TERMINALS: GOLD PLATED BRASS

CUSTOMER:	CATALOG MODEL	
CUSTOMER DWG/REV	N/A	N/A

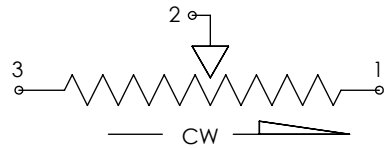
CHANGE HISTORY				
REV	DESCRIPTION	DATE	DRAWN	APPROVD
A	RELEASE	10/7/92		DARB
B	7990-2953			
C0	ECN 2955-SSC	8/11/10	JDD	PDC
C1	ECN 4845-SSC	2/19/14	JDD	BD



NOTES: UNLESS OTHERWISE SPECIFIED
 1. ALL ELECTRICAL, MECHANICAL, AND ENVIRONMENTAL SPECIFICATIONS ARE IAW MIL-PRF-39023


2. .04 THICK (OVER TEETH) X .699/.670 INTERNAL TOOTH LOCKWASHER SUPPLIED WITH UNIT.

3. .093 THICK X .579/.559 PANEL NUT SUPPLIED WITH UNIT.



INCREASING FUNCTION VIEWED FROM SHAFT END

PROPRIETARY AND CONFIDENTIAL THE INFORMATION CONTAINED IN THIS DRAWING IS THE SOLE PROPERTY OF MEASUREMENT SPECIALTIES. ANY REPRODUCTION IN PART OR AS A WHOLE WITHOUT THE WRITTEN PERMISSION OF MEASUREMENT SPECIALTIES IS STRICTLY PROHIBITED.	EAR CONTROL TECHNICAL INFORMATION SUBJECT TO EXPORT ADMINISTRATION REGULATIONS (EAR). THIS TECHNICAL INFORMATION IS PROHIBITED FROM TRANSFER OR DISCLOSURE IN ANY MANNER TO NON-U.S. PERSONS IN THE UNITED STATES OR ABROAD WITHOUT PRIOR APPROVAL BY THE U.S. COMMERCE DEPARTMENT OR APPLICABLE EAR EXEMPTION.		NAME	DATE
	DRAWN	D. TREE	10/7/92	
	CHECKED			
	ENG APPR.			
			MFG APPR.	
			Q.A.	
DIMENSIONS ARE IN INCHES TOLERANCES: ANGULAR ±2° TWO PLACE DECIMAL ±.01 THREE PLACE DECIMAL ±.005 FOUR PLACE DECIMAL ±.0005		MATERIAL NOTED		Information in this box is for Engineering Reference Only
		FINISH NOTED		
		DO NOT SCALE DRAWING		


POTENTIOMETER

SIZE	CAGE CODE	DWG. NO.
A	5W885	6215-1003-030

SHEET 1 OF 1