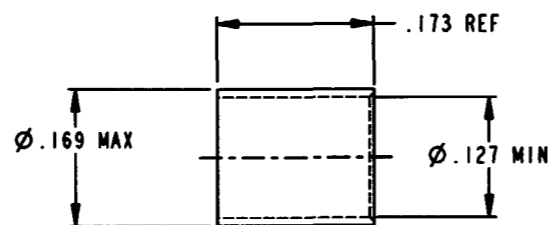


PROPERTY OF DEUTSCH E.C.D.

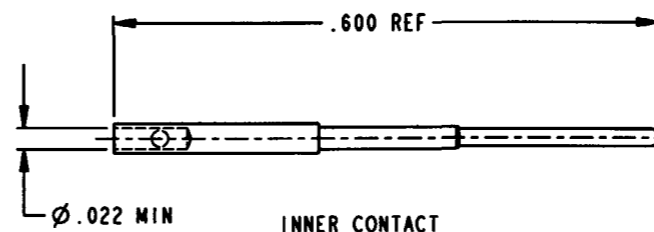
This drawing contains proprietary information that shall not be disclosed, duplicated, nor used in whole or in part for any purpose other than to evaluate this drawing.

N/C 6162-325-1231

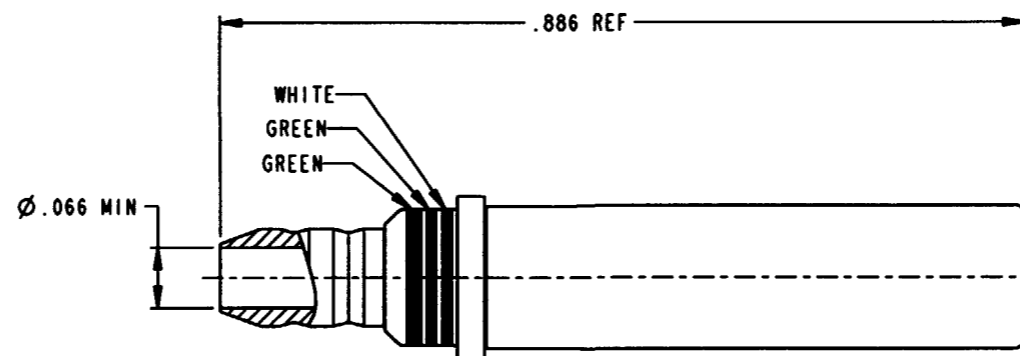
REVISIONS			
REV	DESCRIPTION	DATE	APPROVED
N/C	NEW RELEASE PER E.O. C4274	11-30-99	<i>mk</i>



CRIMP FERRULE



INNER CONTACT



OUTER CONTACT

4. THIS COAXIAL CONTACT WILL MEET THE CABLE SIZES IN MIL-C-39029/102 AND /103.
3. FINISH - CONTACT BODIES & FERRULE: GOLD PLATED
SLEEVE: PASSIVATED
2. MATERIAL - CONTACT BODIES & FERRULE: COPPER ALLOY
SLEEVE: STAINLESS STEEL
1. DIMENSIONS ARE IN INCHES UNLESS OTHERWISE SPECIFIED.

NOTES:

SIGNATURE & DATE	
DR	J. FRIEDHOF 11-23-99
CHK	<i>mk</i> 11-30-99
PE	J. FRIEDHOF 11-23-99
APP	<i>mk</i>
SCALE	7.000 WT NONE

CONTACT
SOCKET ASSEMBLY
SIZE 12 COAX
38999 TYPE
MIL-C-39029/103-559
ENVELOPE

CP	MIL CODE
---	---
DEUTSCH ENGINEERED CONNECTING DEVICES	
5733 W. Whittier Ave. Hemet, California	
A	6162-325-1231
SIZE	CODE 11129 SHEET 01

6162-325-1231-ENV