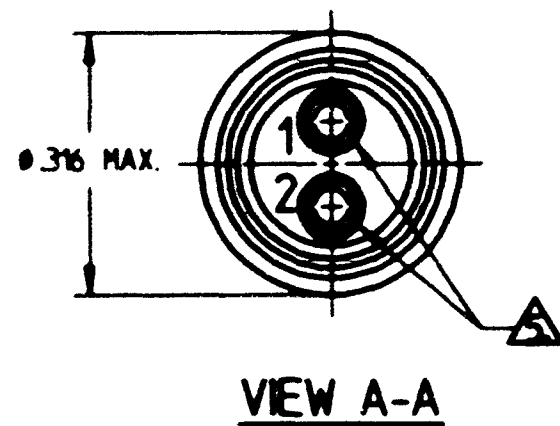
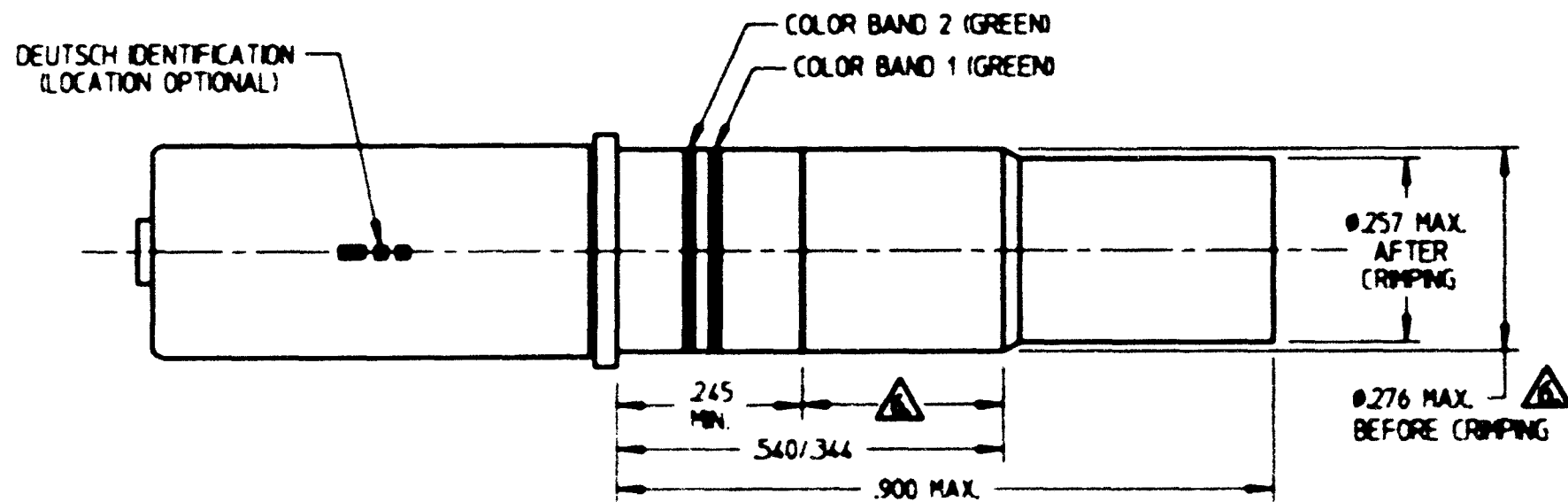
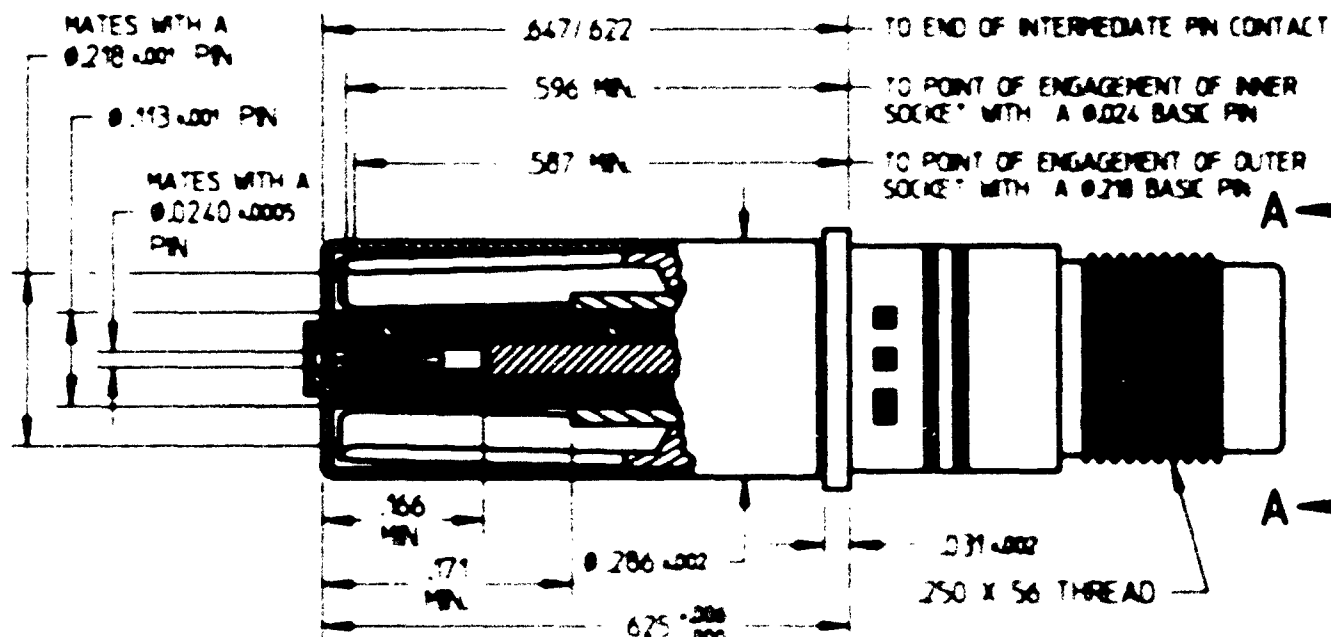


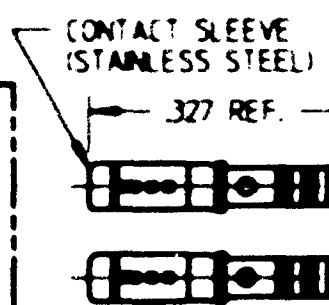
REV	DESCRIPTION	DATE	APPROVED
N/C	NEW RELEASE PER E.O. 11893	12-9-99	[Signature]



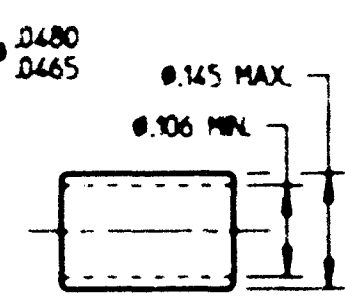
SOCKET CONTACT (SHOWN ASSEMBLED)



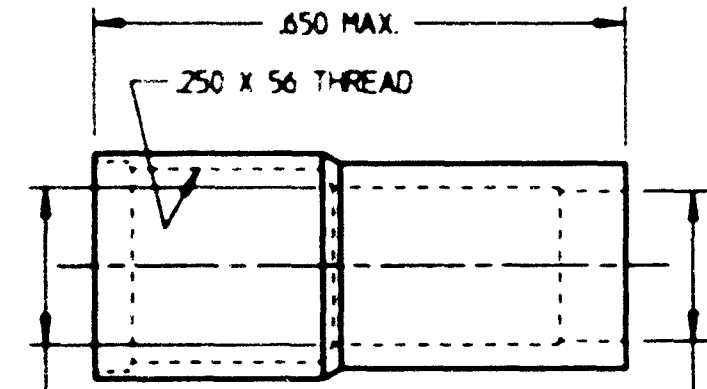
BODY, SOCKET CONTACT



CONTACTS, SOCKET  
(2 REQUIRED)  
M39029/22-191  
MFG. P/N CTS-522/22



SLEEVE, SUPPORT



SLEEVE, CRIMP

- 9. PART IS SAME AS 6162 290-0877 EXCEPT LESS WIRE SEALING BOOT.
- 8. FOR ASSEMBLY INSTRUCTIONS, SEE FORM 1045.
- 7. CONTACT ACCOMMODATES RAYCHEM DOUBLE SHIELD MULTIPLEX CABLES 10613 & 10614

CONTACT	TEST CURRENT [AMPERES]	CONTACT RESISTANCE			MIN. CRIMP TENSILE STRENGTH AXIAL LOAD [POUNDS]	DIELECTRIC WITHSTANDING VOLTAGE		
		MAXIMUM VOLTAGE DROP (MV)				CONTACTS	ALTITUDE	TEST VOLTAGE A.C. RMS
		INITIAL	AFTER CONDITIONING	AFTER CONDITIONING				
CENTER	1.0	55	66	94	8	CENTER TO INTERMEDIATE	SEA LEVEL	1000
INTERMEDIATE	1.0	55	66	94	8	-----	-----	----
OUTER	12.0	75	90	128	25	INTERMEDIATE TO OUTER	SEA LEVEL	500

- ⚠ IN AREA SHOWN, THE DIAMETER MAY GROW TO 0.290 MAX. AFTER CRIMPING.
- ⚠ CAVITY MARKED "1" GOES TO INNER CONTACT. CAVITY MARKED "2" GOES TO INTERMEDIATE CONTACT.

- 4. CONTACTS ARE PLATED .000050 MIN GOLD PER MIL-G-45204.
- 3. ALL METALLIC COMPONENTS ARE MADE OF HIGH GRADE COPPER ALLOY EXCEPT AS SHOWN
- ⚠ DESIGNATES PARTS ARE SHIPPED LOOSE EXCEPT CRIMP SLEEVE MAY BE THREADED ON BODY.
- 1. DIMENSIONS ARE IN INCHES.

NO.	NAME	DATE
1	R. GROSS	12-8-94
2	Job [Signature]	12-9-99
3	P. [Signature]	12-8-94
4		
5		
6		
7		
8		
9		
10		

**CONTACT, SOCKET**  
CONCENTRIC TWIX DATABUS  
SIZE 8  
FOR D38999 CONNECTOR

ENVELOPE

DEUTSCH  
ENGINEERED CONNECTING DEVICES  
36033 Whittier Ave.  
Irvine, California

**6162-316-0877**

SHEET 1 OF 1

6162-316-0877.dwg