

SPECIFICATIONS

ELECTRICAL

RESISTANCE: 5KΩ ±10%
 ELECTRICAL ANGLE: 340° ±2°
 CONTINUITY ANGLE: 344°MIN
 LINEARITY: ±0.5% INDEPENDENT
 END VOLTAGE: 0.5% MAX
 RESOLUTION: VIRTUALLY INFINITE
 OUTPUT SMOOTHNESS: 0.1% MAX
 RESISTANCE TEMPERATURE COEFFICIENT: 400 PPM/°C MAX
 POWER RATING: 0.75 WATT MAX @ 70°C,
 DERATED TO 0.0 WATT @ 125°C
 WIPER CONTACT CURRENT: 10 MILLIAMPS MAX
 DIELECTRIC STRENGTH: 750VRMS @ 60 Hz
 INSULATION RESISTANCE: 100 MEG OHMS @ 500 VDC

MECHANICAL

ROTATION: CONTINUOUS 360°
 START TORQUE: 0.25 OZ-IN MAX,
 RUNNING TORQUE: 0.20 OZ-IN MAX
 WEIGHT, (1 GANG): 0.60Z MAX
 PILOT RUNOUT: 0.001 T.I.R.
 SHAFT RUNOUT: 0.001 T.I.R.
 SHAFT END PLAY: 0.003 MAX
 SHAFT RADIAL PLAY: 0.001 T.I.R.
 LATERAL RUNOUT: 0.002 T.I.R.

ENVIRONMENTAL

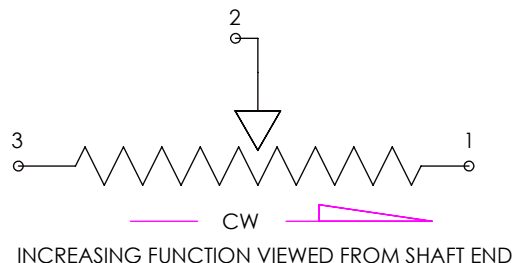
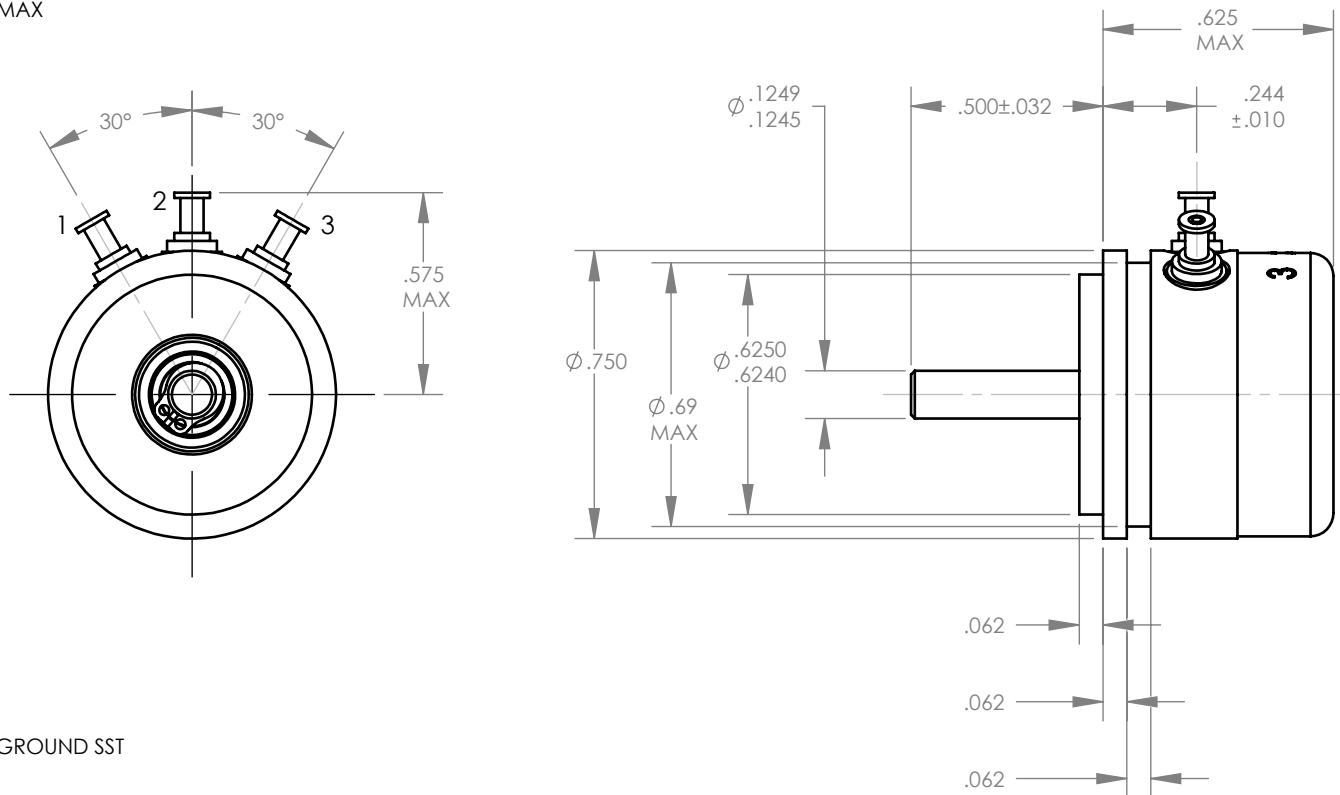
ROTATIONAL LIFE: 50 MILLION CYCLES MINIMUM
 OPERATING TEMPERATURE: -65°C TO +125°C

ALL OTHER ELECTRICAL AND MECHANICAL
 SPECIFICATIONS PER MIL-PRF-39023

MATERIALS

HOUSING AND COVER: ANODIZED ALUMINUM
 SHAFT AND BALL BEARINGS: PASSIVATED CENTERLESS GROUND SST
 ROTOR: BERYLLIUM COPPER
 CONTACTS: MULTI-FINGER PRECIOUS METAL
 ELEMENT: CO-MOLDED CONDUCTIVE PLASTIC
 TERMINALS: GOLD PLATED BRASS

| CHANGE HISTORY | | | | |
|----------------|--------------|---------|-------|---------|
| REV | DESCRIPTION | DATE | DRAWN | APPROVD |
| A | RELEASE | 5/1/01 | KQ | DARB |
| B0 | ECN 1892-SSC | 2/10/09 | PDC | DDA |



PROPRIETARY AND CONFIDENTIAL
 THE INFORMATION CONTAINED IN THIS DRAWING IS THE SOLE PROPERTY OF SPECTRUM SENSORS & CONTROLS, INC.. ANY REPRODUCTION IN PART OR AS A WHOLE WITHOUT THE WRITTEN PERMISSION OF SPECTRUM SENSORS & CONTROLS, INC. IS PROHIBITED.

| | | | | | |
|---|-----------|---------------|------|---|--------|
| DIMENSIONS ARE IN INCHES TOLERANCES: ANGULAR ±2° TWO PLACE DECIMAL ± .01 THREE PLACE DECIMAL ± .005 FOUR PLACE DECIMAL ± .0005 | | NAME | DATE | SPECTRUM SENSORS & CONTROLS GRASS VALLEY, CALIFORNIA | |
| MATERIAL | NOTED | DRAWN | KQ | | 5/1/01 |
| FINISH | NOTED | CHECKED | DARB | | 5/1/01 |
| DO NOT SCALE DRAWING | | ENG APPR. | | | |
| | | MFG APPR. | | | |
| | | Q.A. | | | |
| Information in this box is for Engineering Reference Only | | | | <h1>POTENTIOMETER</h1> | |
| SIZE | CAGE CODE | DWG. NO. | | | |
| A | 5W885 | 6008-1002-030 | | | |
| | | | | SHEET 1 OF 1 | |