

SAFETY ORGANIZATION(S):

THIS FILTER HAS BEEN FORMALLY RECOGNIZED, CERTIFIED OR APPROVED BY THE LISTED AGENCY. THEREFORE, ALL TEST/REQUIREMENTS SPECIFIED IN THE LATEST REVISION OF THE FOLLOWING AGENCY STANDARDS HAVE BEEN MET,

UL RECOGNIZED
CSA CERTIFIED
VDE APPROVED

UL 1283
CSA 22.2, NO.0,0.4,8
VDE 565-3, 625

OPERATING SPECIFICATIONS:

LINE VOLTAGE/CURRENT, 5 AMP., 120 VAC
4 AMP., 250 VAC
4 AMP./40°C, 250 VAC
LINE FREQUENCY, 50-60Hz
MAX. LEAKAGE CURRENT, EACH .25mA AT 120V 60Hz
LINE TO GROUND .42mA AT 250V 50Hz
OPERATING AMBIENT TEMP. RANGE, -10°C TO +40°C @ RATED CURRENT, I
IN AN AMBIENT, T_a, HIGHER THAN 40°C, THE MAXIMUM OPERATING CURRENT, I_o, IS AS FOLLOWS:

$$I_o = I_r \sqrt{\frac{85 - T_a}{45}}$$

RELIABILITY SPECIFICATIONS:

STORAGE TEMPERATURE, -40°C TO +85°C
HUMIDITY, 21 DAYS @ 40°C 95% RH
CURRENT OVERLOAD TEST, 6 TIMES RATED CURRENT FOR 8 SECONDS

TEST SPECIFICATIONS:

INDUCTANCE, .93mH NOMINAL
CAPACITANCE, (MEASURED AT 1 KHz, 0.25 VAC MAX., 25°C ±1°C)
LINE TO LINE, .01μF ±20%
LINE TO GROUND, .005μF ±20%
DISCHARGE RESISTOR, 1.5 MΩ
LINE/GROUND AND LINE/LINE 6000 MΩ (MIN)
INSULATION RESISTANCE AT 100 VDC
(W/O DISCHARGE RESISTOR) 20°C AND 50% RH

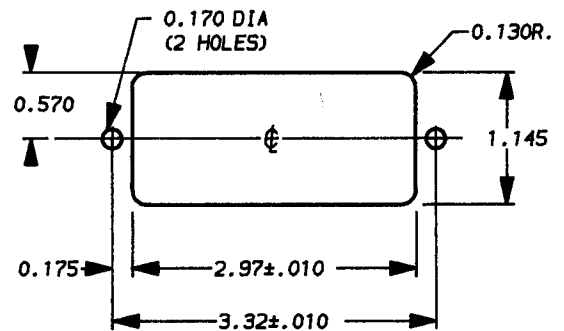
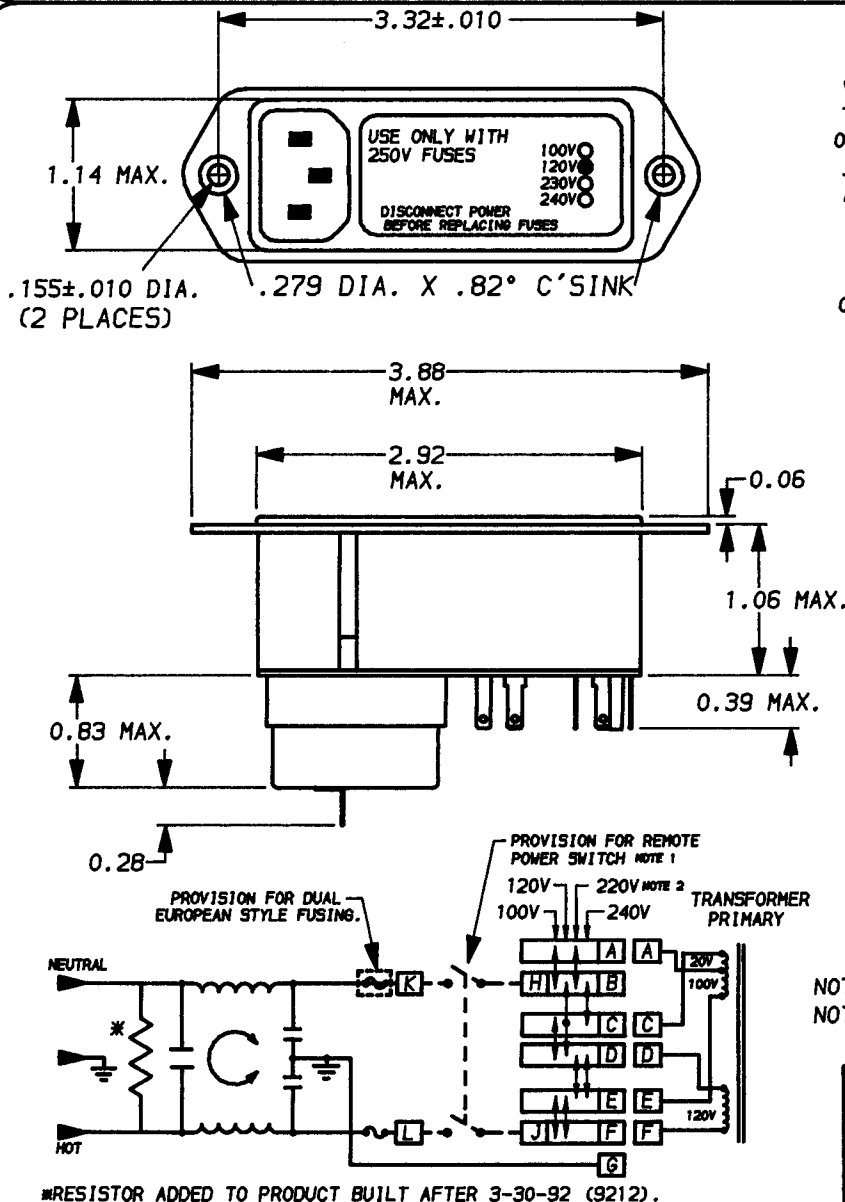
RECOMMENDED RECEIVING INSPECTION HIPOT:

LINES TO GROUND, 1500 VAC FOR 1 MINUTE
LINE TO LINE, 1450 VDC FOR 1 MINUTE

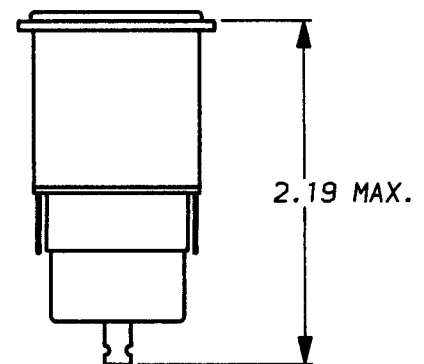
FILTER APPROVAL:

THE BEST WAY TO SELECT AND QUALIFY A FILTER IS FOR YOUR ENGINEERING TO TEST THE UNIT IN YOUR EQUIPMENT.

SEFM4



RECOMMENDED PANEL CUT-OUT
NOT TO SCALE



NOTE 1. JUMPERS REQUIRED IF NO SWITCH IS USED.
NOTE 2. 230V. FOR EUROPEAN APPLICATIONS.

50Ω - 50Ω (MINIMUM) INSERTION LOSS								
FREQUENCY MHz	.15	.50	1.0	2.0	5.0	10	20	30
COMMON dB	14	21	26	33	40	45	50	40
DIFF. dB								

UNLESS OTHERWISE SPECIFIED,
TOLERANCE TO BE ±.025
MATERIAL & FINISH: AS SUPPLIED
This document is proprietary to CORCOM INC.
and is not to be reproduced nor used for
manufacturing purposes except on CORCOM'S
prior written consent.

corcom
LIBERTYVILLE, IL 60048

POWER LINE FILTER

DATE: 4-18-94 CATALOG NO. REV.
APPROV. SEFM4.05

CAD NO. SEFM4.05