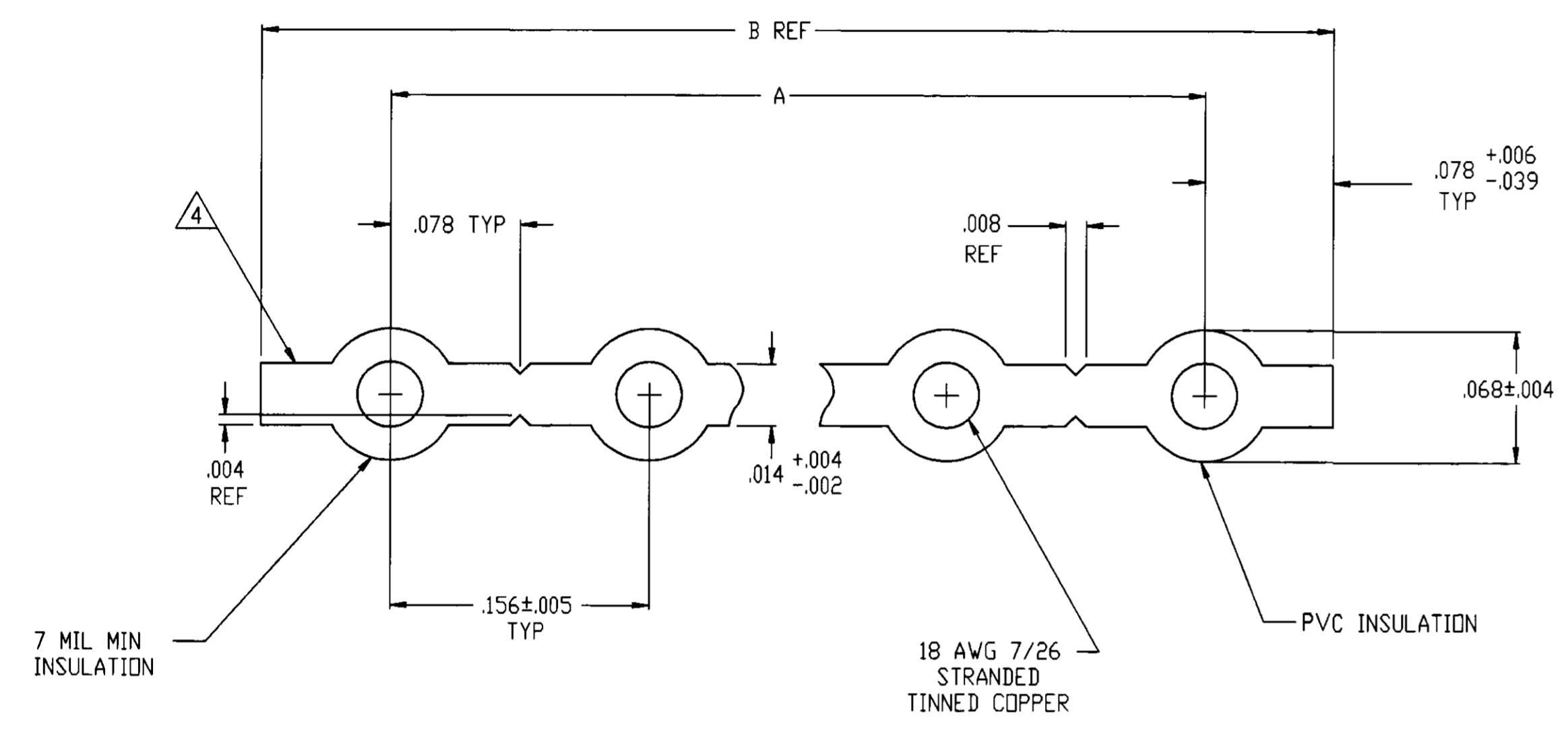


LOC	REV	DATE	BY	APPD
EH	12			
REVISIONS				
0		RELEASE PER NPR PD 96-0054	06AUG96	LMH RS
01		REVISED PER ECO-09-022178	21SEP09	KK AEG

- CABLE CERTIFIED TO: -UL CABLE STYLE: 2651  
CSA: CSA AWM IA 105°C 300V FT1
- CABLE PHYSICAL SPECIFICATIONS:
  - TEMPERATURE RATING: -20°C TO +105°C
  - FLAMMABILITY: -UL: VWI
  - UNSATURATION: GRAY FLAME RETARDANT FLEXIBLE PVC
- ELECTRICAL REQUIREMENTS:
  - VOLTAGE: 300 VOLTS
- EDGE MARK ON CONDUCTOR #1
- LENGTH PER REEL: 250 FT. REEL MAY CONTAIN SEPARATE LENGTHS. 20 FT. MIN PER LENGTH. TWO LENGTHS MAX PER REEL.
- LENGTH PER REEL: 100 FT. REEL MAY CONTAIN SEPARATE LENGTHS. 20 FT. MIN PER LENGTH. TWO LENGTHS MAX PER REEL.
- CABLE SURFACE PRINTED PER UL & CSA REQUIREMENTS.
- OBSOLETE PARTS: OBSOLETE CIS STREAMLINING PER D.RENAUD/D.SINISI



REEL LENGTH	B REF	A	NO. OF CNDTS	PART NUMBER
3.744		3.588±.014	24	5-57752-4
3.588		3.432±.014	23	5-57752-3
3.432		3.276±.014	22	5-57752-2
3.276		3.120±.014	21	5-57752-1
3.120		2.964±.013	20	5-57752-0
2.964		2.808±.013	19	4-57752-9
2.808		2.652±.013	18	4-57752-8
2.652		2.496±.013	17	4-57752-7
2.496		2.340±.012	16	4-57752-6
2.340		2.184±.012	15	4-57752-5
2.184		2.028±.012	14	4-57752-4
2.028		1.872±.011	13	4-57752-3
1.872		1.716±.011	12	4-57752-2
1.716		1.560±.011	11	4-57752-1
1.560		1.404±.010	10	4-57752-0
1.404		1.248±.010	9	3-57752-9
1.248		1.092±.009	8	3-57752-8
1.092		.936±.009	7	3-57752-7
.936		.780±.008	6	3-57752-6
.780		.624±.007	5	3-57752-5
.624		.468±.006	4	3-57752-4
.468		.312±.005	3	3-57752-3
.312		.156±.005	2	3-57752-2
3.744		3.588±.014	24	2-57752-4
3.588		3.432±.014	23	2-57752-3
3.432		3.276±.014	22	2-57752-2
3.276		3.120±.014	21	2-57752-1
3.120		2.964±.013	20	2-57752-0
2.964		2.808±.013	19	1-57752-9
2.808		2.652±.013	18	1-57752-8
2.652		2.496±.013	17	1-57752-7
2.496		2.340±.012	16	1-57752-6
2.340		2.184±.012	15	1-57752-5
2.184		2.028±.012	14	1-57752-4
2.028		1.872±.011	13	1-57752-3
1.872		1.716±.011	12	1-57752-2
1.716		1.560±.011	11	1-57752-1
1.560		1.404±.010	10	1-57752-0
1.404		1.248±.010	9	57752-9
1.248		1.092±.009	8	57752-8
1.092		.936±.009	7	57752-7
.936		.780±.008	6	57752-6
.780		.624±.007	5	57752-5
.624		.468±.006	4	57752-4
.468		.312±.005	3	57752-3
.312		.156±.005	2	57752-2

NOTE: DIMENSIONS ARE UNLESS OTHERWISE SPECIFIED. DIMENSIONS IN PARENTHESES ARE FOR INFORMATION ONLY. DIMENSIONS IN SQUARES ARE FOR THE LATEST REVISION.

DIMENSIONS: INCHES	TOLERANCES UNLESS OTHERWISE SPECIFIED:	1 PLG DEC ±.1	2 PLG DEC ±.02	3 PLG DEC ±.005	4 PLG DEC ±.0005	ANGLES ±
MATERIAL	FINISH	WEIGHT	SCALE	REV	DATE	BY

DIMENSIONS: INCHES  
 TOLERANCES UNLESS OTHERWISE SPECIFIED:  
 1 PLG DEC ±.1  
 2 PLG DEC ±.02  
 3 PLG DEC ±.005  
 4 PLG DEC ±.0005  
 ANGLES ±

MATERIAL: -  
 FINISH: -  
 WEIGHT: -  
 SCALE: 20:1  
 REV: 1 OF 1  
 DATE: 01

L. HALL 06AUG96  
 R. SPEER 06AUG96  
 C. BROOME 06AUG96  
 PRODUCT SPEC

AMP Incorporated  
 Harrisburg, PA 17105-3608

CABLE, MULTIPLE CONDUCTOR,  
 .156CL, 18 AWG

SIZE: A1  
 CASE CODE: 00779  
 DRAWING NO: 57752  
 CUSTOMER DRAWING