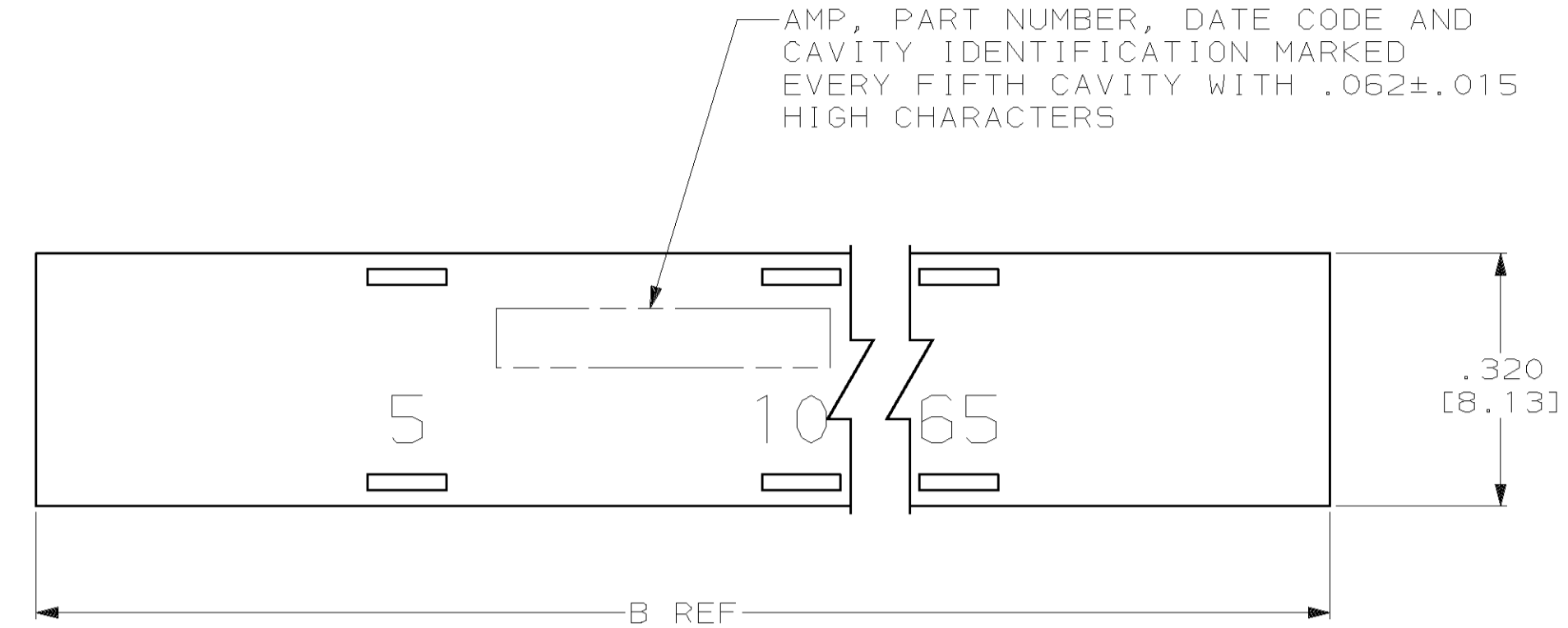
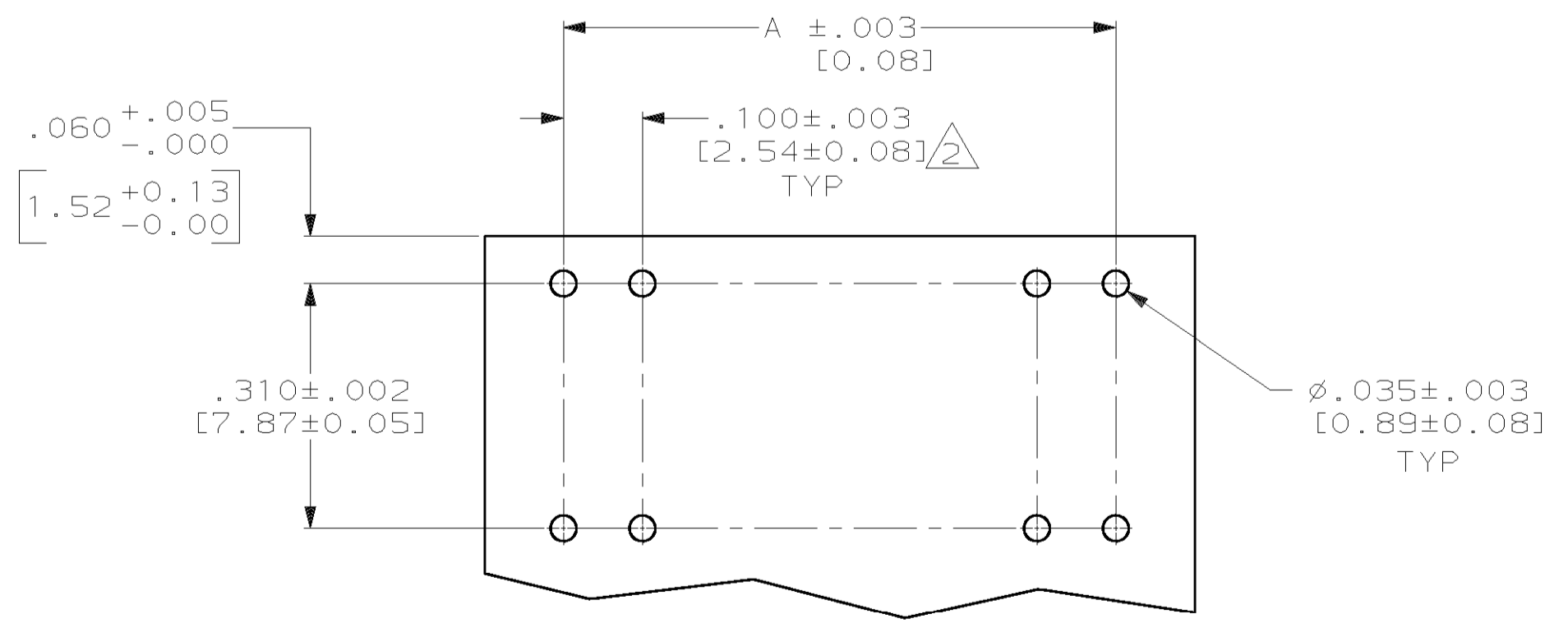
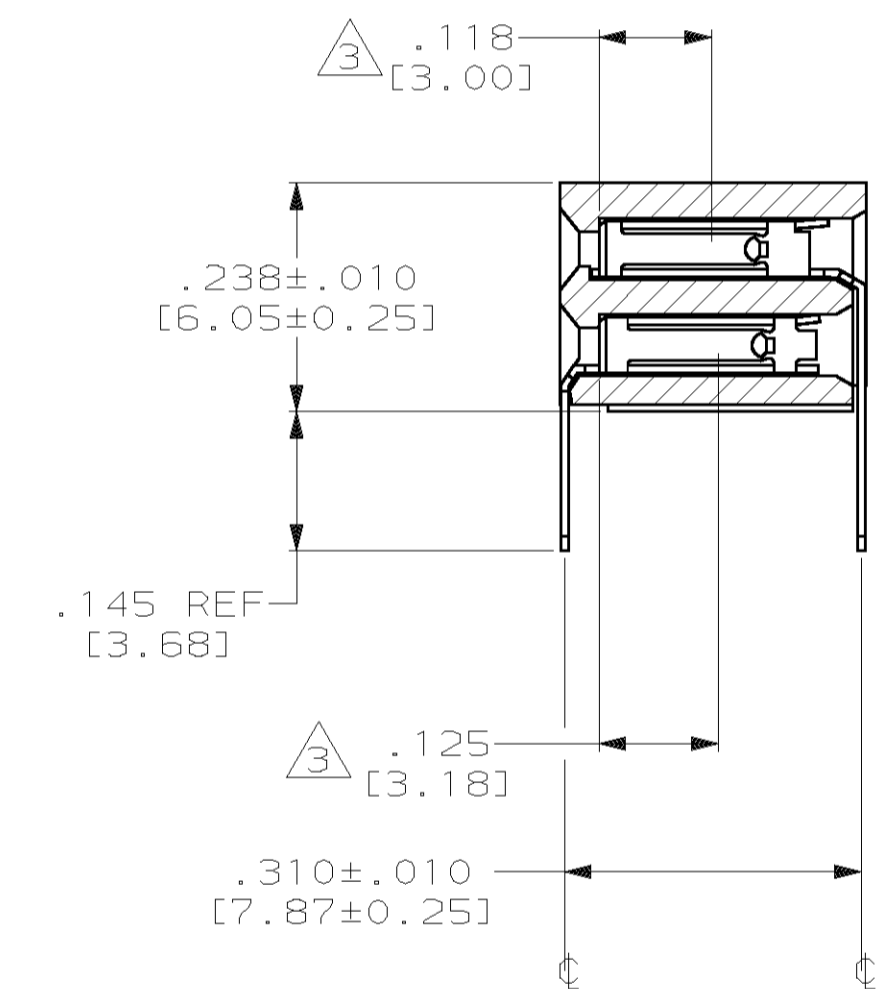
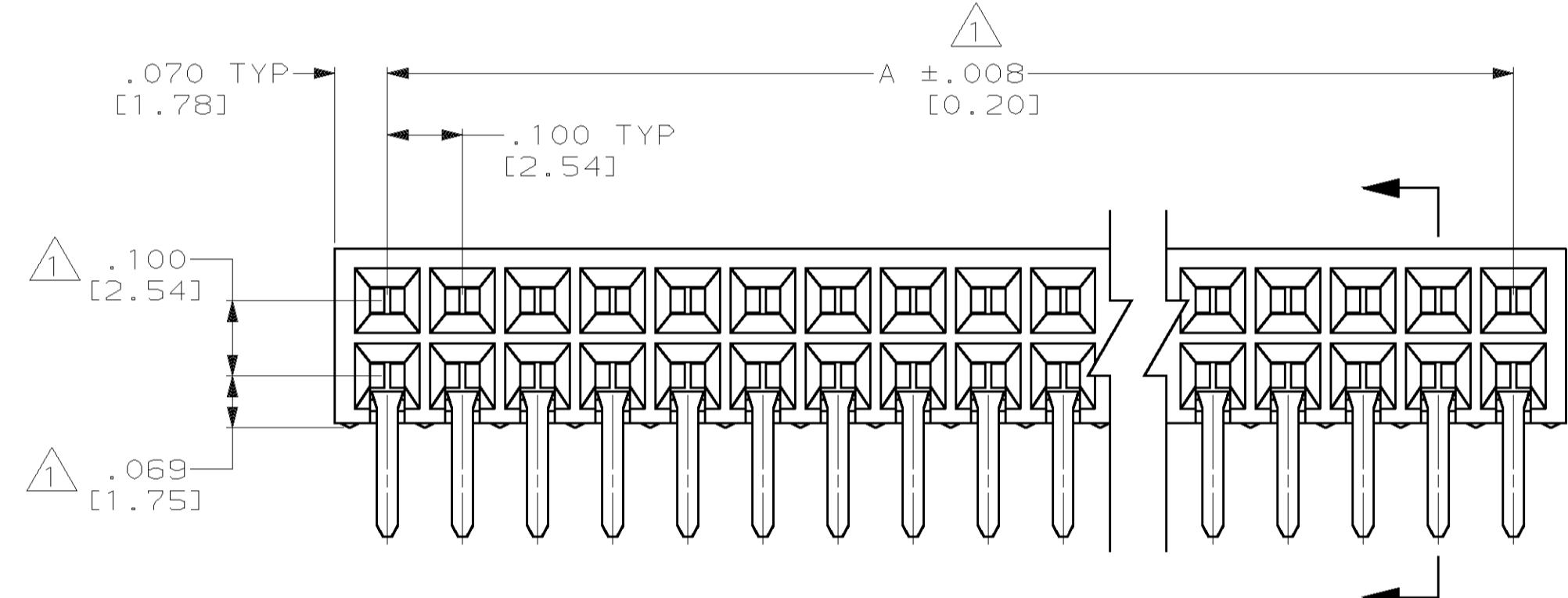


LOC		DIST		REVISIONS			
DF	ZO	F	CHR	DESCRIPTION	DATE	DWN	APVD
		F		REV PER 0600-8506-99	2-00	JEB	DM



- 1 THESE DIMENSIONS PERTAIN TO CAVITY CENTERLINES, NOT TO CONTACT LOCATIONS.
- 2 TOLERANCE IS NON-CUMULATIVE.
- 3 POINT OF MEASUREMENT FOR PLATING THICKNESS, (MEASURED INSIDE CONTACT BEAMS).
- 4 .000050 [0.00127] GOLD IN CONTACT AREA. .000150 [0.00381] MIN 63/37 TIN-LEAD (HOT DIPPED) ON SOLDER TAILS ALL OVER. .000030 TO .000150 [0.000762 TO 0.00381] NICKEL ENTIRE CONTACT.
5. MARK "CSA" LOGO ON PART.
- 6 HOUSING MATERIAL: POLYPHENYLENE SULFIDE GLASS FILLED.  
 COLOR: BROWN  
 CONTACT MATERIAL: PHOSPHORUS BRONZE.



RECOMMENDED BOARD LAYOUT

OBSOLETE	5.040 [128.02]	4.900 [124.46]	100	1-532988-0
OBSOLETE	4.040 [102.62]	3.900 [99.06]	80	532988-9
	-	-	-	532988-8
	-	-	-	532988-7
OBSOLETE	-	-	-	532988-6
OBSOLETE	3.340 [84.84]	3.200 [81.28]	66	532988-6
OBSOLETE	.940 [23.88]	.800 [20.32]	18	532988-5
OBSOLETE	1.940 [49.28]	1.800 [45.72]	38	532988-4
	4.940 [125.48]	4.800 [121.92]	98	532988-3
OBSOLETE	2.940 [74.68]	2.800 [71.12]	58	532988-2
	6.540 [166.12]	6.400 [162.56]	130	532988-1

DIM B	DIM A	NO OF POSN	PART NUMBER
-------	-------	------------	-------------

THIS DRAWING IS A CONTROLLED DOCUMENT.

DWN T. ALEXANDER 5-15-96	AMP Incorporated Harrisburg, PA 17105-3608
CHK G. ALTEMOSE 11-19-96	
APVD G. ALTEMOSE 11-19-96	
PRODUCT SPEC APPLICATION SPEC	RECEPTACLE ASSEMBLY, MOD II, DBL ROW, .100 x .100 C, CLOSED ENTRY, SHORT POINT OF CONTACT
MATERIAL FINISH	SIZE A1 00779
WEIGHT CUSTOMER DRAWING	SCALE 5:1 SHEET 1 OF 1 REV F