

4

3

2

1

THIS DRAWING IS UNPUBLISHED.

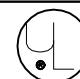
RELEASED FOR PUBLICATION

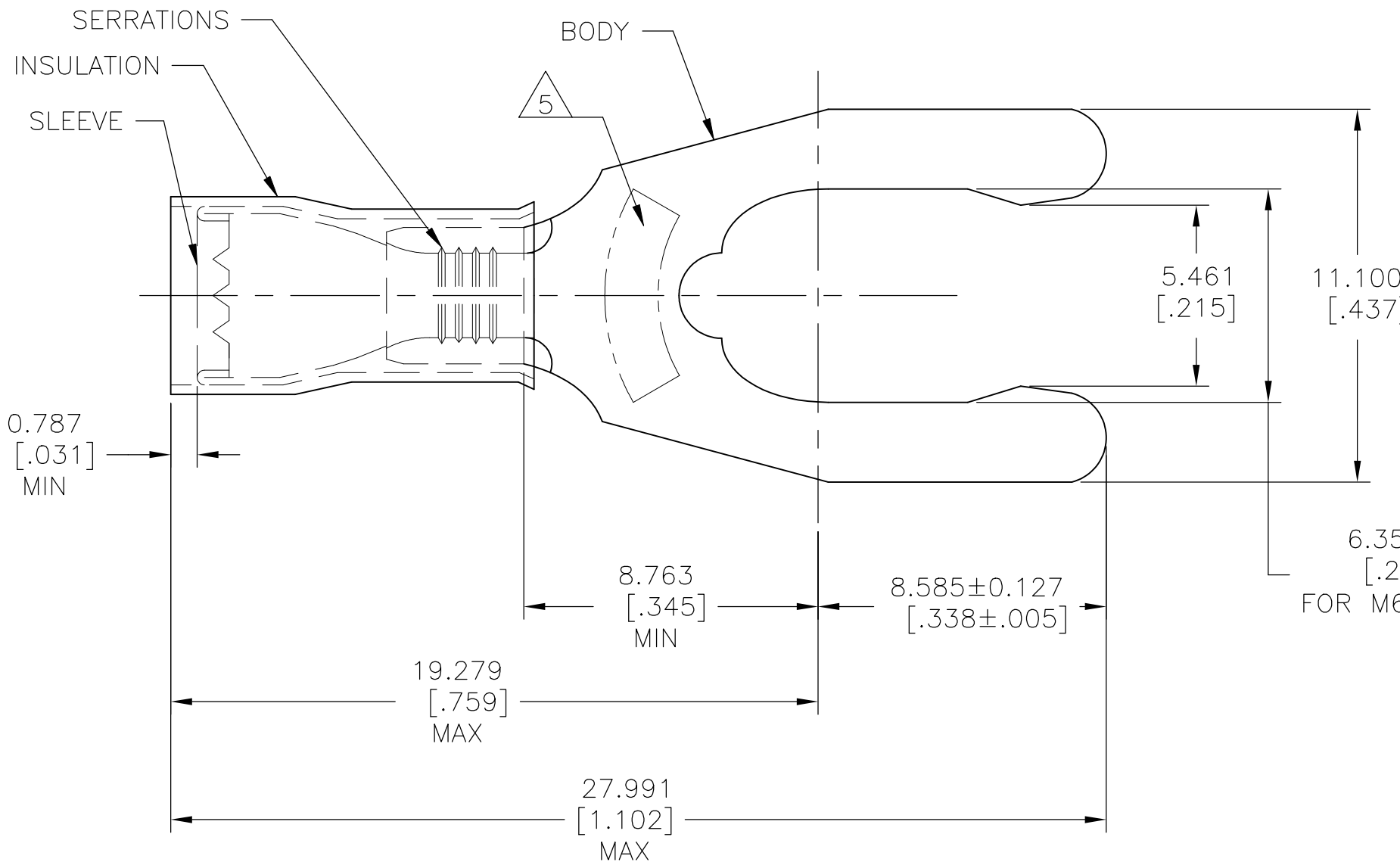
REVISIONS

© COPYRIGHT - TE Connectivity Ltd.

ALL RIGHTS RESERVED.

P	LTR	DESCRIPTION	DATE	DWN	APVD
	K1	REDRAWN PER ECR 10-010105	28JUN10	JR	TM
	K2	REVISED PER ECO-17-008114	31MAY2018	RS	DR

AMP WIRE RANGE	 E13288 Listed
16-14 AWG SOLID OR STRANDED	16-14 AWG SOLID OR STRANDED



- 1 WIRE INSULATION DIA, SEE TABLE "A"
- 2 BODY MATL THK, 0.787±0.051 [.031±.002].
- 3 BODY: PHOS BRONZE PER ASTM B103
INSULATION: NYLON
SLEEVE: COPPER PER ASTM B152
- 4 BODY: TIN PLATE PER ASTM B545
SLEEVE: TIN PLATE PER ASTM B545
INSULATION: COLOR-BLUE
- 5 STAMP 1/4 S AMP 16-14* APPROX AS SHOWN

2.667-3.810 [.105-.150]	1000	LOOSE PIECE	52423
DIM "A"	QTY	PACKAGE TYPE	PART NO

AMP INCORPORATED
CUSTOMER SERVICE SYSTEMS

THIS DRAWING IS A CONTROLLED DOCUMENT.

DWN jr ruth 28JUN10

CHK TOM MICHIELUTTI 28JUN10

APVD TOM MICHIELUTTI 28JUN10

 TE Connectivity Ltd.

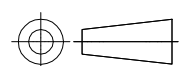
FOR ADDITIONAL
PRODUCT INFORMATION OR
COPIES OF DRAWINGS
AND TECHNICAL DOCUMENTS

PRODUCT INFORMATION CENTER
1-800-522-6752

MAX RECOMMENDED OPERATING
TEMPERATURE:
105°C [221°F]

VOLTAGE RATING:
300 V MAX

DIMENSIONS:
mm [INCHES]



TOLERANCES UNLESS
OTHERWISE SPECIFIED:

- 0 PLC ± -
- 1 PLC ± -
- 2 PLC ± -
- 3 PLC ± 0.127[.005]
- 4 PLC ± -
- ANGLES ± 5°

PRODUCT SPEC
UL 486 A-B

APPLICATION SPEC
114-2157

WEIGHT

CUSTOMER DRAWING

NAME
TERMINAL, PIDG, SPRING SPADE,
WIRE SIZE: 16-14

SIZE A3 CAGE CODE 00779 DRAWING NO C-52423 RESTRICTED TO -

FOR APPLICATION
TOOLING INFORMATION

TOOLING ASSISTANCE CENTER
1-800-722-1111

FOR ORDER ENTRY

1-800-526-5142

WIRE CROSS SECTIONAL AREA RANGE,
1.04-2.62mm²[2,050-5,180] CIR MILS
SOLID OR STRANDED

MATERIAL



FINISH



SCALE 6:1 SHEET 1 OF 1 REV K2