

4

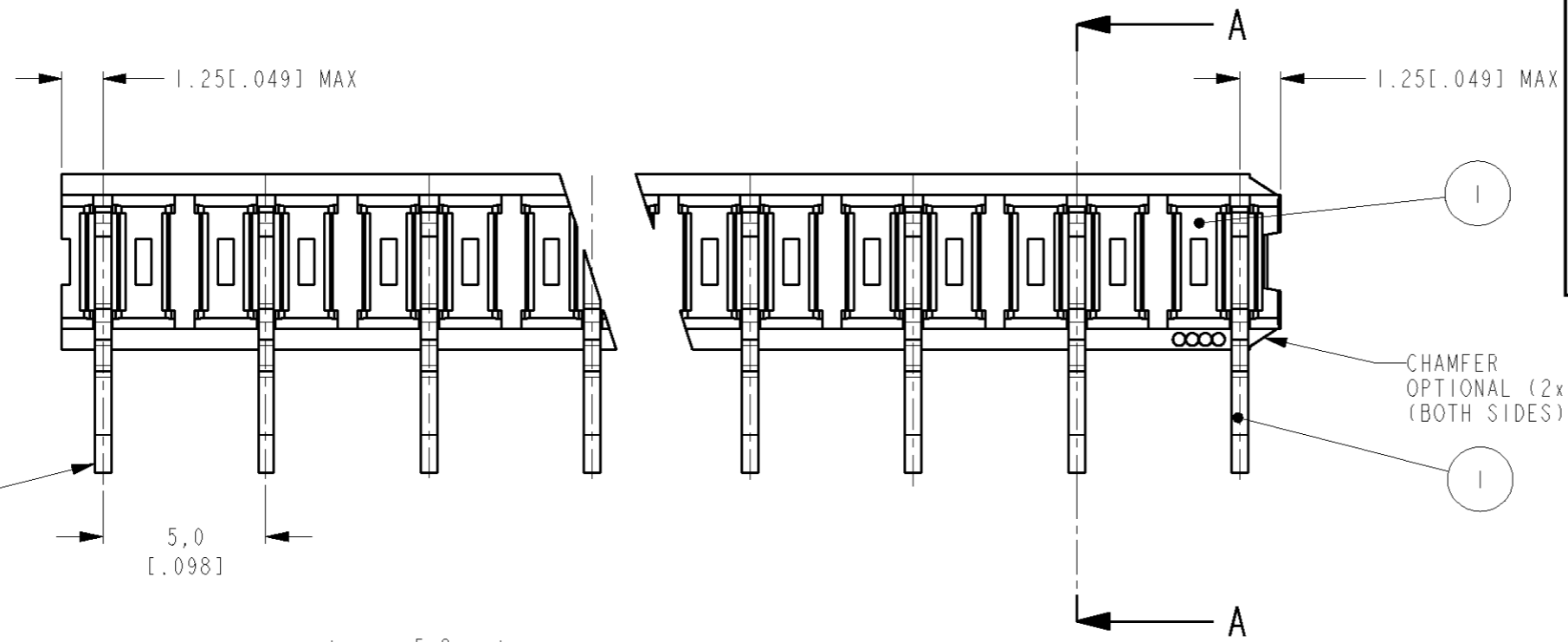
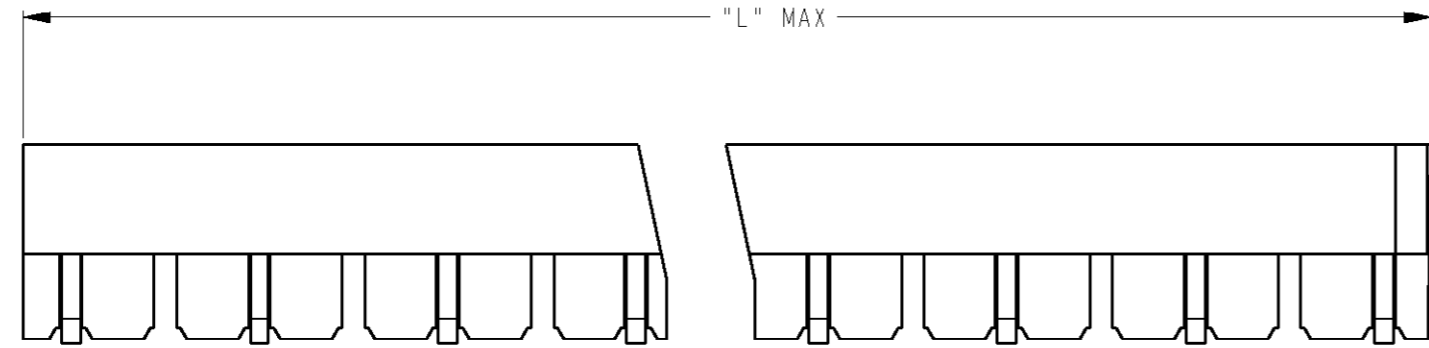
3

2

1

THIS DRAWING IS UNPUBLISHED. RELEASED FOR PUBLICATION  
 © COPYRIGHT - BY TYCO ELECTRONICS CORPORATION. ALL RIGHTS RESERVED.

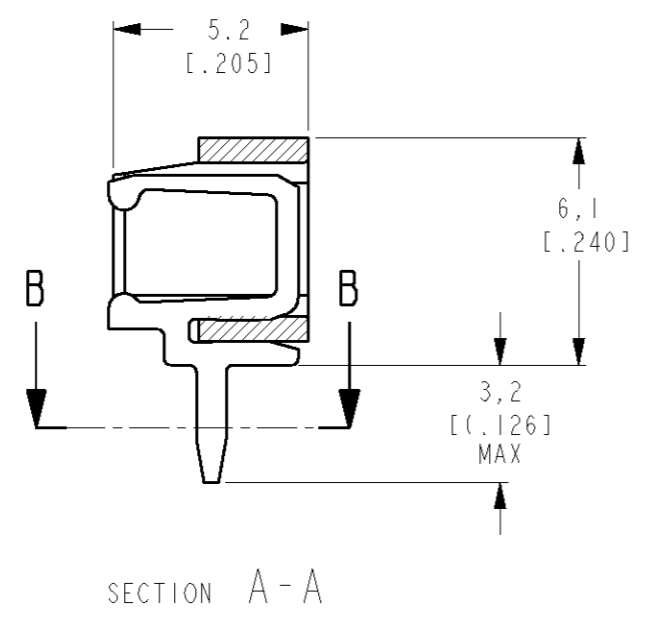
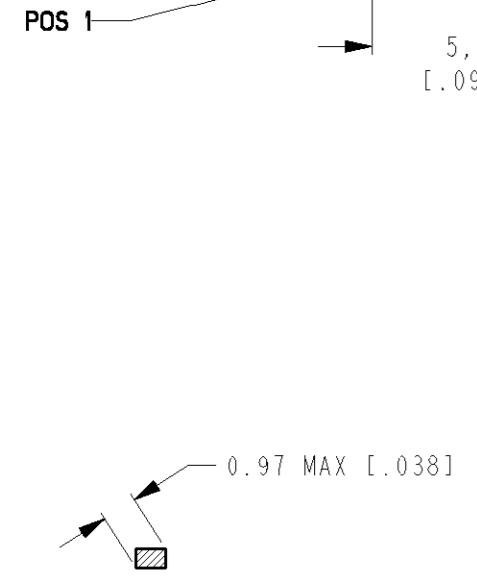
LOC	DIST	REVISIONS				
P	LTR	DESCRIPTION	DATE	DWN	APVD	
H	-	A	ECN EH10 0344 05	31marc2005	MG	MG
		A1	REVISED PER ECO-09-026495	28NOV09	KK	AEG



ORDER NUMBER	NUMBER OF POSITIONS	L MAX.	
		M.M.	INCHES
5161801-2	2	7,5	.296
5161801-3	3	12,5	.492
5161801-4	4	17,5	.690
5161801-5	5	22,5	.886
5161801-6	6	27,5	1.083
5161801-7	7	32,5	1.280
5161801-8	8	37,5	1.477
5161801-9	9	42,5	1.674
5161801-0	10	47,5	1.871
5161801-1	11	52,5	2.067
5161801-2	12	57,5	2.264
5161801-3	13	62,5	2.461
5161801-4	14	67,5	2.658
5161801-5	15	72,5	2.855

**1** OBSOLETE  
**1** OBSOLETE

**1** OBSOLETE PARTS: OBSOLETE CIS STREAMLINING PER D.RENAUD/D.SINISI



ITEM NO.	DESCRIPTION	MATERIAL	FINISH	QUANTITY
2	CONTACT	PHOSPHORBRONZE	TIN OVER NICKEL	SEE TABLE
1	HOUSING	PBT, 20% GF	GREEN	1

THIS DRAWING IS A CONTROLLED DOCUMENT FOR TYCO ELECTRONICS CORPORATION. IT IS SUBJECT TO CHANGE AND THE CONTROLLING ENGINEERING ORGANIZATION SHOULD BE CONTACTED FOR THE LATEST REVISION.

DIMENSIONS:	TOLERANCES UNLESS OTHERWISE SPECIFIED:
mm	
0 PLC	±
1 PLC	±
2 PLC	±
3 PLC	±
4 PLC	±
ANGLES	±
MATERIAL	FINISH

DWN M.Gosselink 31 mar 05  
 CHR M.Gosselink 31 mar 05  
 APVD -  
 PRODUCT SPEC 108-19027  
 APPLICATION SPEC -  
 WEIGHT -

**tyco Electronics** TYCO ELECTRONICS NEDERLAND B.V.  
 's-HERTOGENBOSCH, THE NETHERLANDS

NAME 2-15 POS FEMALE BOARD TO BOARD CONNECTOR ASSEMBLY FOR MINI-MATCH INTERCONNECTION SYSTEM, PITCH 5,0 MM

SIZE A3 CAGE CODE 00779 DRAWING NO C-5161801 RESTRICTED TO -

CUSTOMER DRAWING SCALE 5:1 SHEET 1 OF 1 REV A1