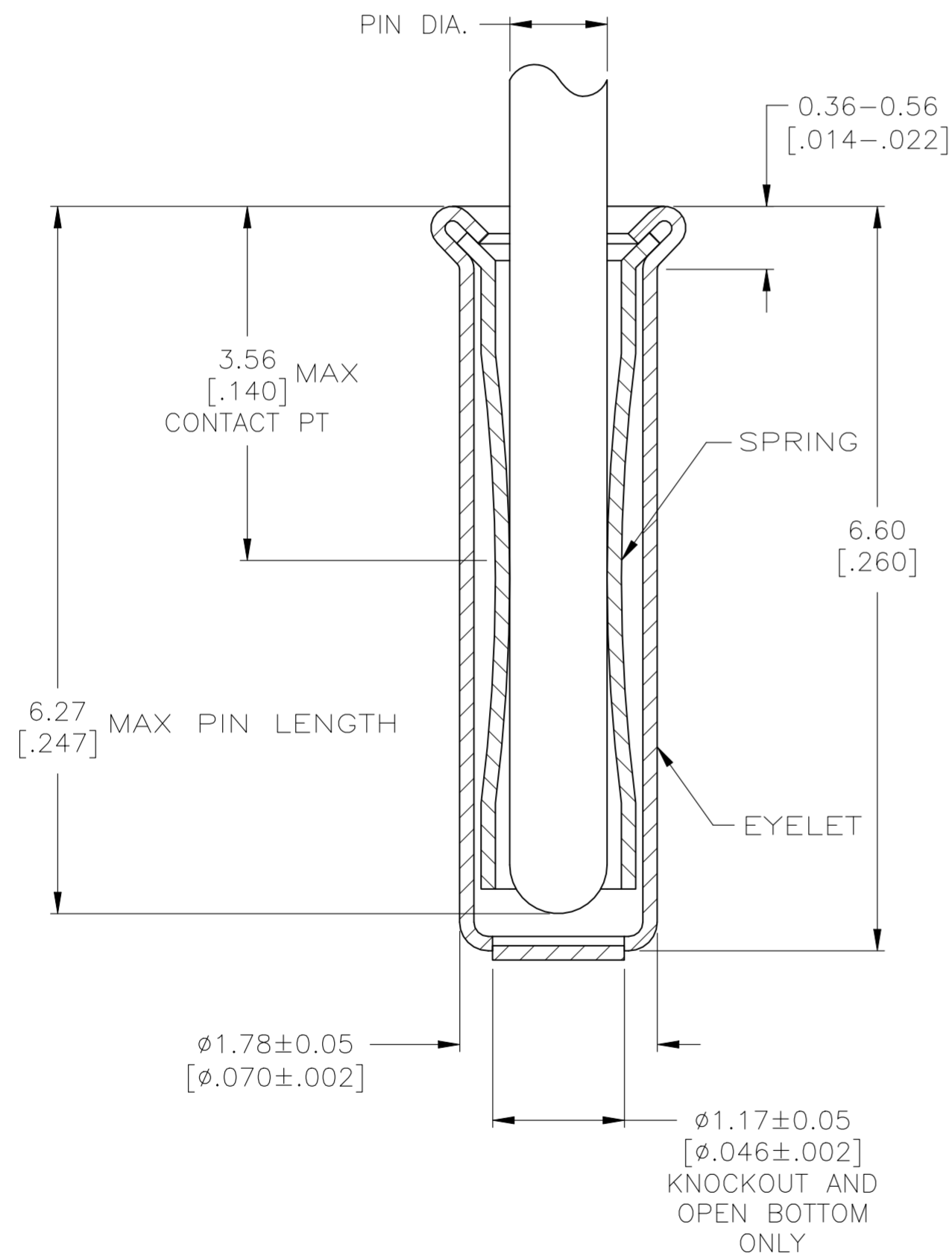
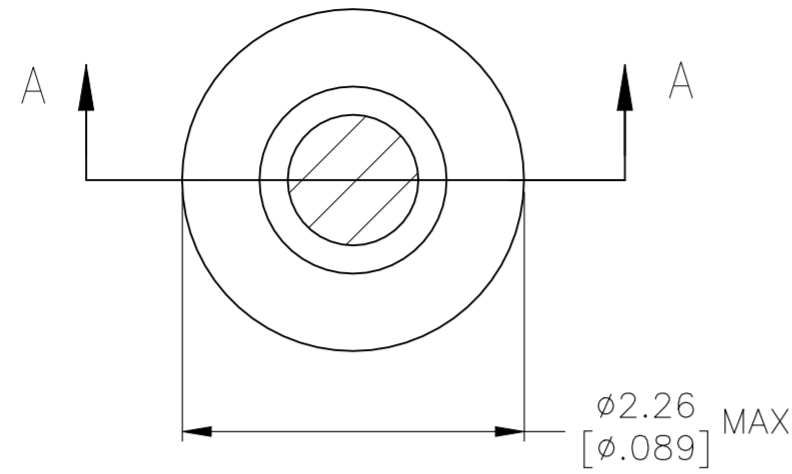


REVISIONS				
P	LTR	DESCRIPTION	DATE	APVD
AG5		REVISED AS PER ECR-24-199424	09FEB2024	NR JK



SECTION A-A

- 1. TIN PER MIL-T-10727 OR TIN LEAD .000254 [.000100] MIN THK.
- 2. NICKEL UNDERPLATE ALL OVER, MATING SURFACE PLATED TO MEET PERFORMANCE REQUIREMENTS OF TE CONNECTIVITY PRODUCT SPECIFICATION 108-14008.
- 3. GOLD FLASH PER MIL-G-45204, TYPE II,  $0.13 \mu\text{m}$  [.000005] MIN THK. OVER NICKEL PLATE PER QQ-N-290  $0.51 \mu\text{m}-1.52 \mu\text{m}$  [.000020-.000060] EXT THK.
- 4. GOLD PER MIL-G-45204, TYPE II,  $0.00127$  [.000050] MIN THK OVER NICKEL PLATE PER QQ-N-290.  $0.00127$  [.000050] MIN EXT THK
- 5. RECOMMENDED HOLE SIZE, PLATED OR UNPLATED:
  - MACHINE INSERTION:  $1.83 \begin{matrix} +0.10 \\ -0.08 \end{matrix}$  [ $.072 \begin{matrix} +.004 \\ -.003 \end{matrix}$ ]
  - HAND INSERTION:  $1.83 \begin{matrix} +0.10 \\ -0.00 \end{matrix}$  [ $.072 \begin{matrix} +.004 \\ -.000 \end{matrix}$ ]
- 6. APPLICATION TOOL PART NUMBER:
  - MACHINE NO. 682127-5
  - INSERTION HEAD NO. 682039-4
- 7. TO INSURE PROPER SPRING TENSION DO NOT EXCEED A 0.05 [.002] DIFFERENCE IN PIN DIA WHEN CHANGING TO A SMALLER PIN.
- 8. BOTTOM PLUG KNOCKOUT TOOL PART NUMBER 69729 WITH TIP PART NUMBER 69728-2.
- 9. TIN PER ASTM B 545, .000254 [.000100] MIN THK.
- 10. MATERIAL: SPRING: BERYLLIUM COPPER QQ-C-533  
EYELET: COPPER, QQ-C-576
- 11. GOLD PER MIL-G-45204 TYPE II,  $0.00076$  [.000030] MIN THK OVER NICKEL PLATE PER QQ-N-290  $0.00127$  [.000050] MIN THK OF CONTACT AREA.

	KNOCKOUT		TIN 9	TIN 9	6-50865-7
	OPEN		GOLD 4	GOLD 11	6-50865-6
			GOLD 4	GOLD 2	1-50865-2
					1-50865-1
SUPSD BY 50865-5					1-50865-0
OBSOLETE	CLOSED				50865-8
OBSOLETE	KNOCKOUT	0.86-1.04 [.034-.041]	TIN 1	TIN 1	50865-7
	OPEN				50865-6
	CLOSED				50865-5
OBSOLETE	OPEN		GOLD 3	GOLD 2	50865-4
OBSOLETE			TIN 1		50865-3
	KNOCKOUT		GOLD 3		50865-2
OBSOLETE			TIN 1		50865-1
	CLOSED		GOLD 3		50865
NOTES	BOTTOM TYPE	RECOMMENDED PIN DIA. 7	EYELET	SPRING	PART NO

THIS DRAWING IS A CONTROLLED DOCUMENT.		DWN R. TALLEY 4-5-91	TE Connectivity			
DIMENSIONS: mm [INCHES]		CHK -				
TOLERANCES UNLESS OTHERWISE SPECIFIED:		APVD -	MINIATURE SPRING SOCKET ASSEMBLY SERIES 4			
0 PLC ± - 1 PLC ± - 2 PLC ± - 3 PLC ± 0.20 [.008] 4 PLC ± - ANGLES ± -		PRODUCT SPEC -				
MATERIAL - 10	FINISH -	APPLICATION SPEC -	SIZE A2	CAGE CODE 00779	DRAWING NO C=50865	RESTRICTED TO -
CUSTOMER DRAWING		WEIGHT 0.000000	SCALE 1:1	SHEET 1 OF 1	REV AG5	