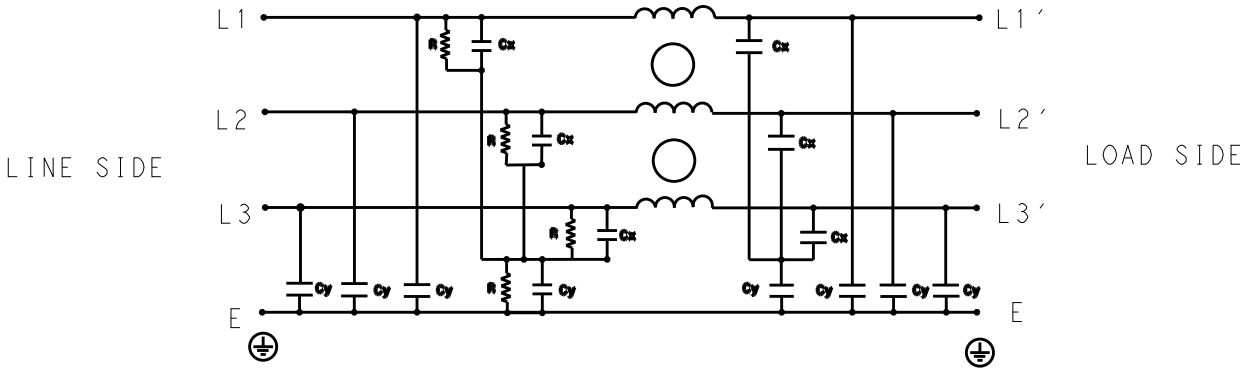


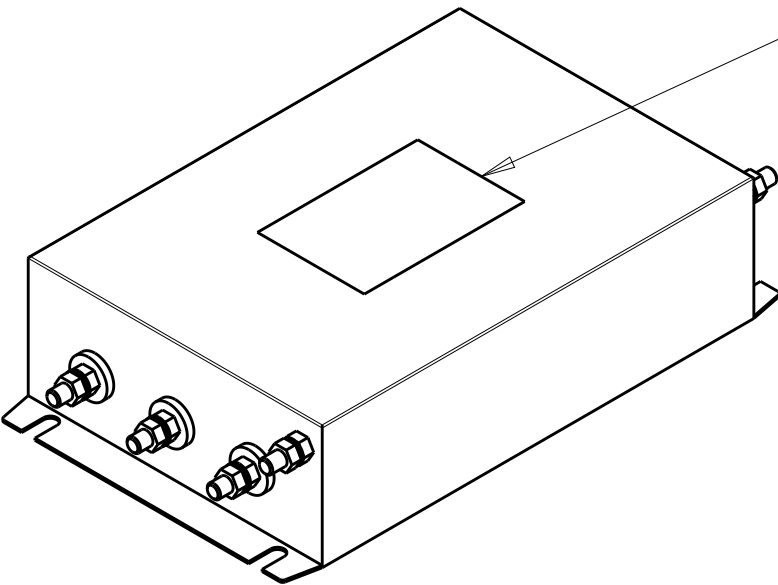
P	LTR	DESCRIPTION	DATE	DWN	APVD
	B	INITIAL RELEASE	07JUL2020	SB	LI



SCHEMATIC

TYPICAL INSERTION LOSS  
COMMON MODE 50/50Ω; DIFFERENTIAL MODE 50/50Ω

MHz	0.01	0.05	0.15	0.5	1	3	5	10	30
CM	32	36	51	50	47	40	35	30	26
DM	34	38	52	52	46	37	38	31	25



LABEL TO TE  
MARKING SPECIFICATION

SAFETY ORGANIZATIONS

THIS FILTER WILL BE FORMALLY RECOGNIZED, CERTIFIED OR APPROVED BY THE LISTED AGENCY. THEREFORE, ALL TEST/REQUIREMENTS SPECIFIED IN THE LATEST REVISION OF THE FOLLOWING AGENCY STANDARDS WILL BE MET:

UL RECOGNIZED*	200A 520V 50Hz/60Hz 40°C
CSA CERTIFIED**	200A 520V 50Hz/60Hz 40°C

\*31 JULY 2020 ; \*\*31 AUGUST 2020

OPERATING SPECIFICATION

LINE CURRENT/VOLTAGE: 200A, 520VAC  
LINE FREQUENCY: 50/60Hz

MAXIMUM LEAKAGE CURRENT: 20mA @ 230VAC, 50Hz

OPERATING AMBIENT TEMPERATURE RANGE @ RATED CURRENT: -25°C TO +40°C

IN AN AMBIENT, T<sub>a</sub>, HIGHER THAN 40°C, THE MAXIMUM OPERATING CURRENT, I<sub>o</sub>, IS AS FOLLOWS:

$$I_o = I_r \sqrt{\frac{85 - T_a}{45}}$$

RELIABILITY SPECIFICATIONS

STORAGE TEMPERATURE: -40°C TO +85°C  
HUMIDITY: 21 DAYS @ 40°C AND 95% RH

TEST SPECIFICATIONS

INDUCTANCE, NOMINAL: 0.12mH

CAPACITANCE @ 1kHz  
LINE TO GROUND, NOMINAL: 2.04μF  
LINE TO LINE, NOMINAL: 6.8μF

DISCHARGE RESISTOR


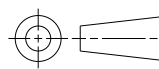
L/G I.R. 1MΩ 2W  
L/L I.R. 2MΩ 2W  
L/N I.R. XXX  
N/G I.R. XXX  
IR (NO DISCHARGE RESISTOR) 20°C, 50% RH AND 100VDC, MIN: 6MΩ

RECOMMENDED RECEIVING INSPECITON HIPOI

LINE TO GROUND FOR 1 MINUTE: 2856VDC  
LINE TO LINE FOR 1 MINUTE: 2236VDC

FILTER APPROVAL

THE BEST WAY TO SELECT AND QUALIFY A FILTER IS FOR YOUR ENGINEERING TO TEST THE UNIT IN YOUR EQUIPMENT.

THIS DRAWING IS A CONTROLLED DOCUMENT.		DWN 04MAR2020 SHRICARANA B	 TE Connectivity		
DIMENSIONS: mm	TOLERANCES UNLESS OTHERWISE SPECIFIED:	CHK 04MAR2020 LEO IRUDHAYARAJ			
		APVD 04MAR2020 LEO IRUDHAYARAJ			
		PRODUCT SPEC			
	0 PLC ±0.5 1 PLC ±0.4 2 PLC ±0.4 3 PLC ±0.130 4 PLC ±0.0500 ANGLES ±0.5	APPLICATION SPEC	NAME POWER LINE FILTER 200KEMS6BFPD		
		WEIGHT			
MATERIAL	FINISH	CUSTOMER DRAWING	SIZE A3	CAGE CODE 00779	DRAWING NO C-5-1609967-5
			SCALE 1:4	SHEET 1 OF 2	REV B

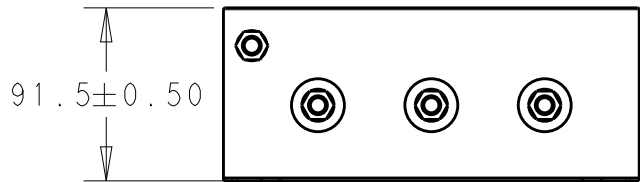
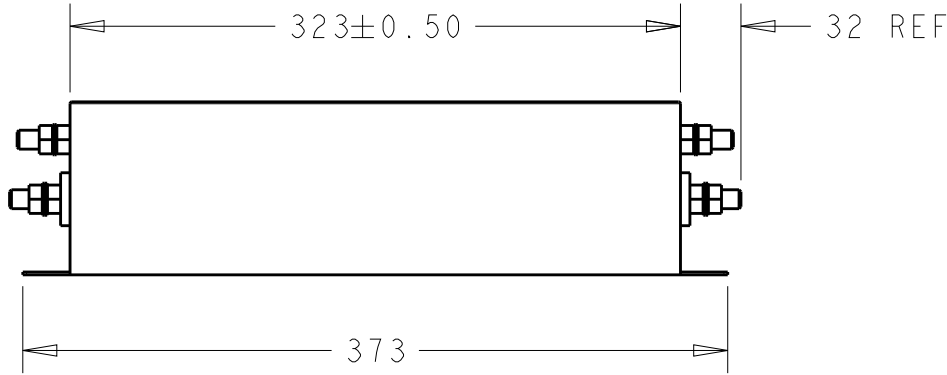
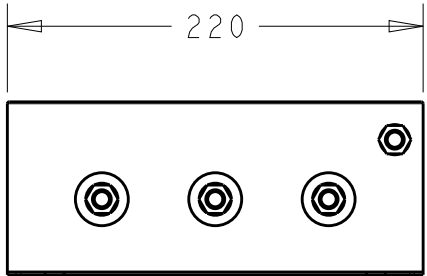
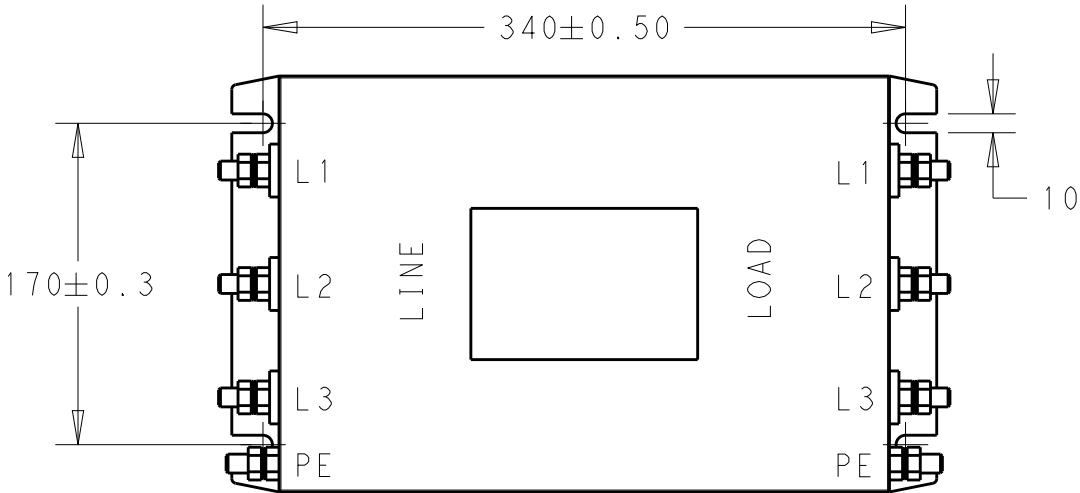
© 2020 TE Connectivity. All Rights Reserved.


NOTE 1 GROUND CONNECTION:  
DO NOT LOOSEN INNER GROUND NUTS.  
TORQUE OUTER TERMINAL /GROUND NUTS: 4-10Nm

NOTE 2 INPUT OUTPUT CONNECTION TERMINAL  
AWG SIZE: XXX  
THREADED BOLT SIZE FOR TERMINAL: M10  
THREADED BOLT SIZE FOR GROUND: M10

REVISIONS

P	LTR	DESCRIPTION	DATE	DWN	APVD
		SEE SHEET 1			



THIS DRAWING IS A CONTROLLED DOCUMENT.		DWN 04MAR2020 SHRICHARANA B	 TE Connectivity		
DIMENSIONS: mm		CHK 04MAR2020 LEO IRUDHAYARAJ			
TOLERANCES UNLESS OTHERWISE SPECIFIED:		APVD 04MAR2020 LEO IRUDHAYARAJ	NAME POWER LINE FILTER 200KEMS6BFPD		
0 PLC ± 1 PLC ±0.5 2 PLC ±0.40 3 PLC ±0.130 4 PLC ±0.0500 ANGLES ±		PRODUCT SPEC -	SIZE CAGE CODE DRAWING NO RESTRICTED TO		
MATERIAL -		APPLICATION SPEC -	A300779C-5-1609967-5		
FINISH -		WEIGHT -	SCALE 1:4 SHEET 2 OF 2 REV B		
-		CUSTOMER DRAWING			