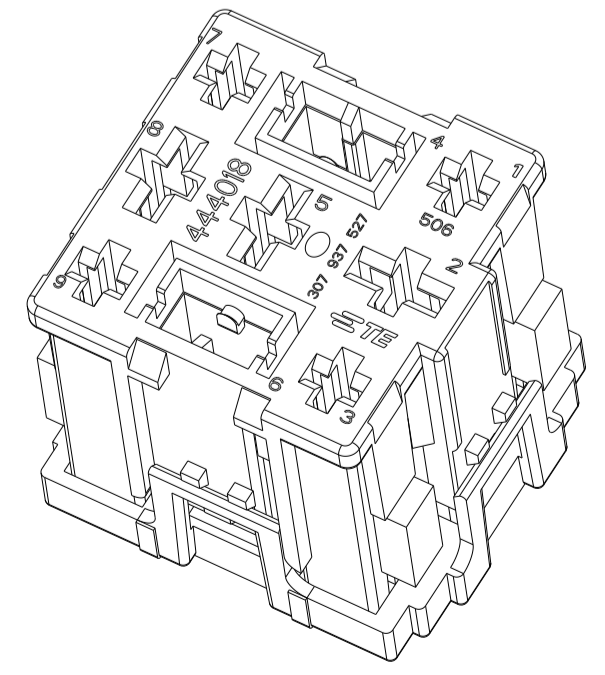
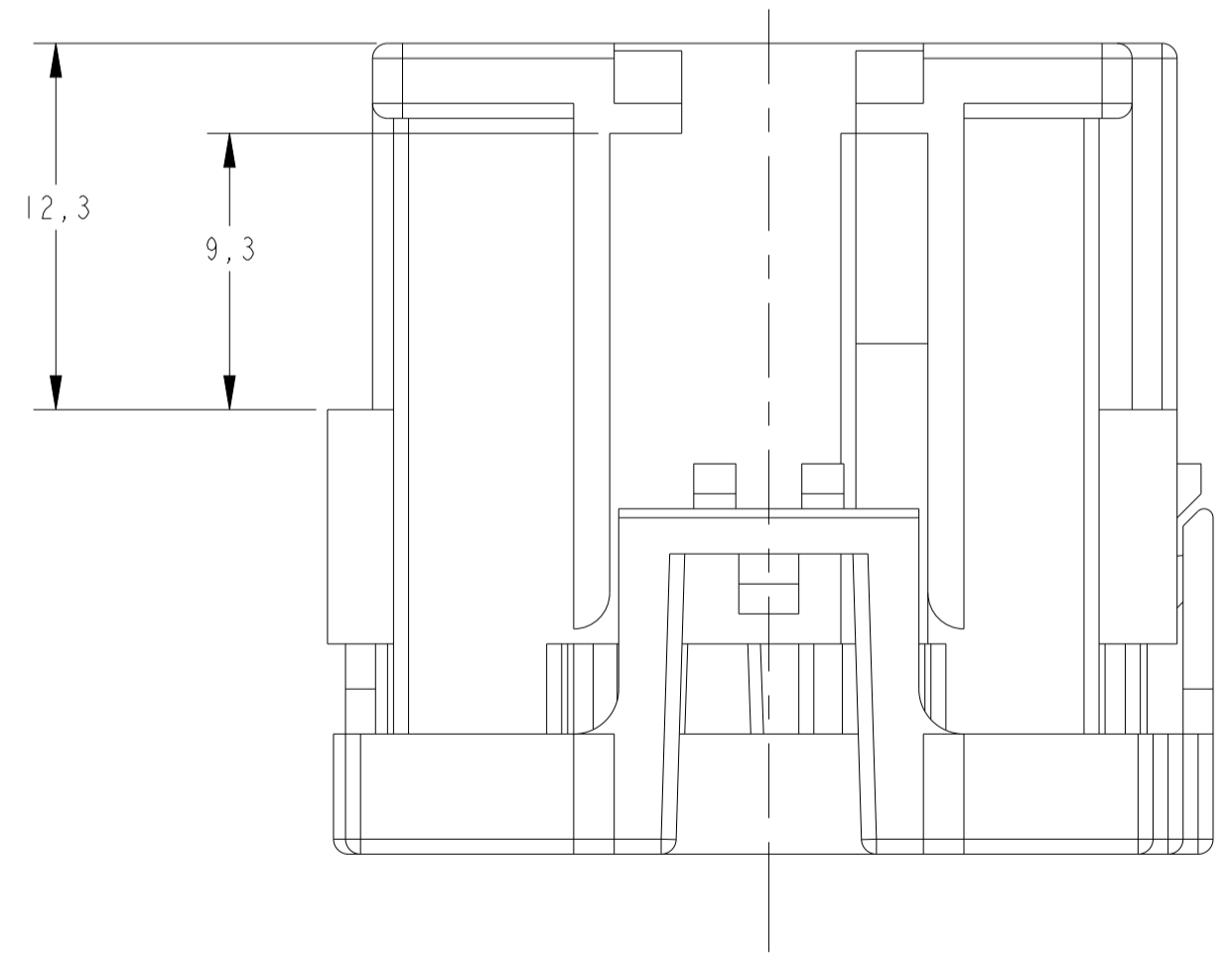
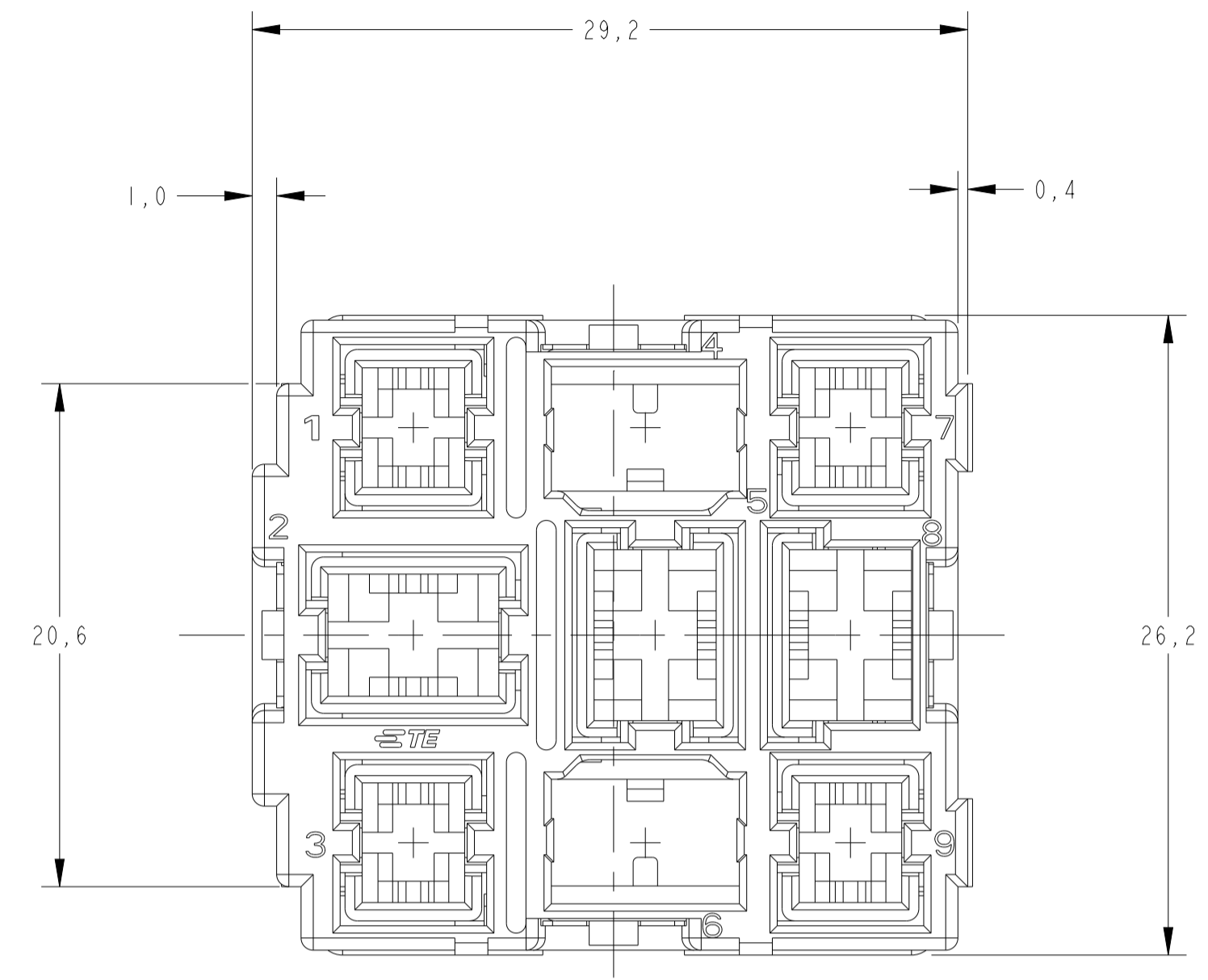
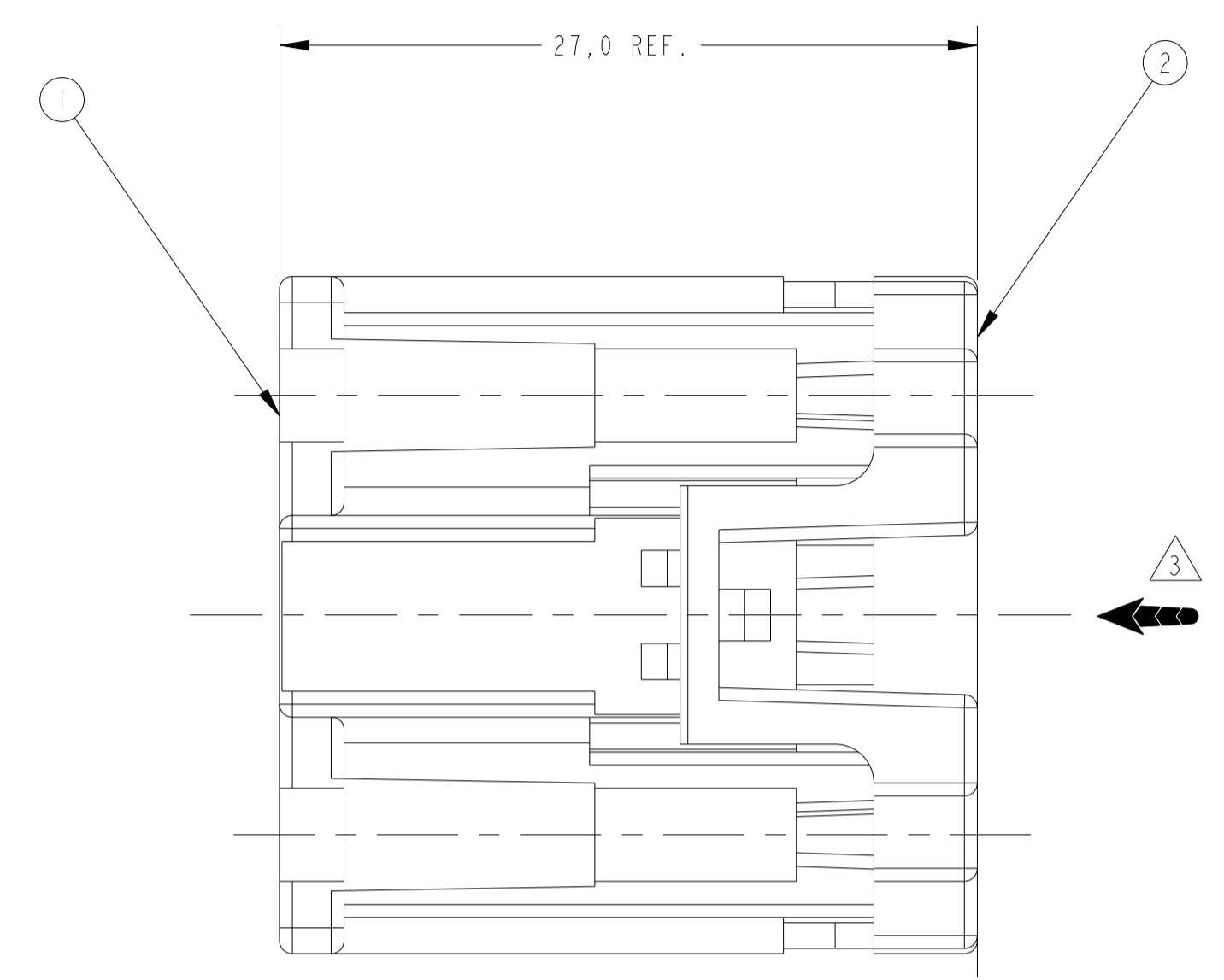
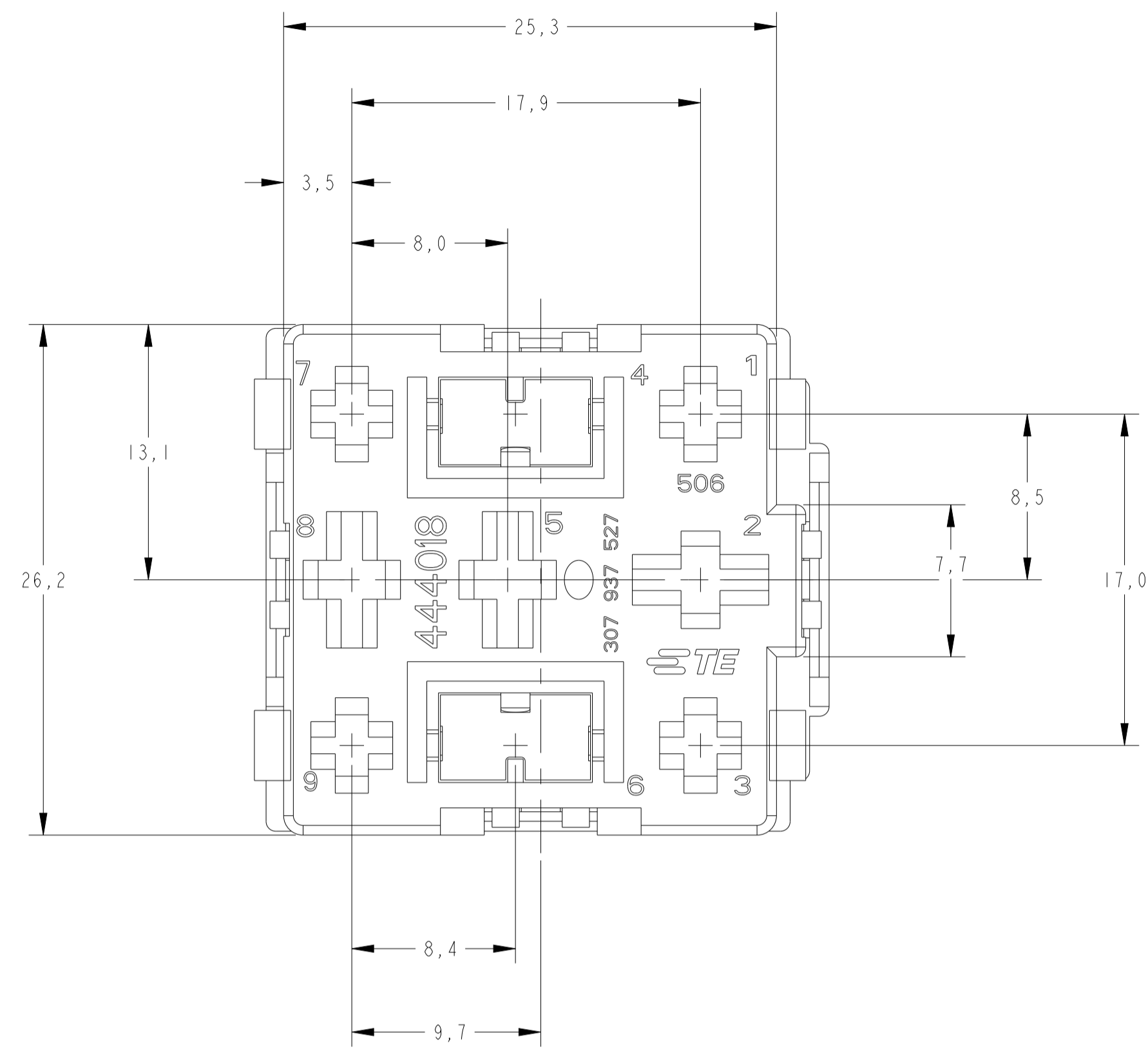


creo
 Creo Parametric 2.0
**DO NOT REVISE
 EXCEPT BY CAD**

REVISIONS				
P	LTN	DESCRIPTION	DATE	DWN APVD
E		REVISED BY ECO-07-015680	20JUL2007	RKTL LWP
F		REVISED DESIGN ECO-13-018731	02DEC2013	NCL NMS
F1		REVISED PER ECO-20-013015	13OCT2020	AP DO
F2		REVISED PER ECN-22-144268	13JUN2022	AP MT



PERSPECTIVE VIEW
 SCALE 2:1

GRAVAÇÃO MARKING
LOGOTIPO TE TE LOGO
CÓDIGO PAÍS PRODUTOR MANUFACTURER COUNTRY CODE
NÚMERO COMPONENTE TE TE COMPONENT NUMBER
NÚMERO CAVIDADE CAVITY NUMBER
IDENTIFICAÇÃO CIRCUITO CIRCUIT IDENTIFICATION
PAÍS PRODUTOR MANUFACTURER COUNTRY

- 1 - OS ITENS 1 E 2 SÃO FORNECIDOS COMO MOSTRADO. 1 - ITEMS 1 AND 2 ARE SUPPLIED AS SHOWN.
- 2 - TERMINAIS UTILIZADOS:
 - CIRCUITOS 1, 3, 7 E 9 - JUNIOR POWER TIMER.
 - CIRCUITOS 2, 5 E 8 - STANDARD POWER TIMER.
 - CIRCUITOS 4 E 6 - POSITIVE LOCK.
- 2 - TERMINAIS TO BE USED:
 - CIRCUITS 1, 3, 7 AND 9 - JUNIOR POWER TIMER.
 - CIRCUITS 2, 5 AND 8 - STANDARD POWER TIMER.
 - CIRCUITS 4 AND 6 - POSITIVE LOCK.
- 3 - COVER CAP DEVE SER EMPURRADO À FRENTE APÓS A INSERÇÃO DOS TERMINAIS. 3 - COVER CAP MUST BE PUSHED FORWARD AFTER INSERTION OF TERMINALS.
- 4 - USADO NO "FRAME, FUSE & RELAY BOX" PN 444308 E NO "RELAY ADAPTOR" PN 444442. 4 - USED ON "FRAME, FUSE AND RELAY BOX" PN 444308 AND "RELAY ADAPTOR" PN 444442.

REQUERIDO POR ASSY	DESCRIPTION	MATERIAL	FINISH
1	HSG 9 POSN COMB. JR/STD P. TIMER	PA 6.6 + 15% FV	LARANJA/ORANGE
2	COVER CAP	PA6-20XGB+10%GF	VIOLETA/VIOLET
			VIOLETA/VIOLET
			CINZA/GRAY
			VERDE/GREEN
			BRANCO/WHITE
			AZUL/BLUE
			AMARELO/YELLOW
			VERMELHO/RED
			MARROM/BROWN
			PRETO/BLACK
1	HSG 9 POSN COMB. JR/STD P. TIMER	PA 6.6 + 15% FV	PRETO/BLACK

THIS DRAWING IS A CONTROLLED DOCUMENT. DWN: M. L. OGAWA 16SEPT1999
 CHK: P. L. FARIA 29SEPT1999
 APVD: L. G. DALTO 29SEPT1999

TE Connectivity

HOUSING ASSY, 9 POSN., COMBINED JR/STD POWER TIMER

SIZE: A1 CAGE CODE: - DRAWING NO: C=444313 RESTRICTED TO: -
 SCALE: 4:1 SHEET: 1 OF 1 REV: F2