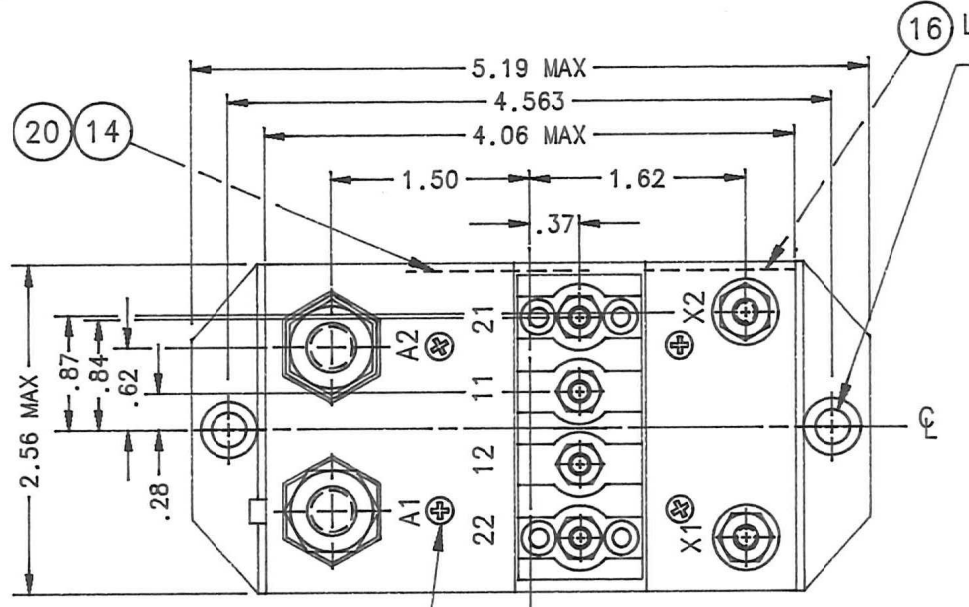


FAA/PMA

REVISIONS			RELEASED	
REV	DESCRIPTION	DATE	APPROVED	
P 32086	REDRAWN, FIND NOS 19 & 20 ADDED	97/03/04	RS	
R 32275	TOL, 2 PLC WAS ±.06, 3 PLC WAS ±.010 .50 WAS .37	97/03/06	RS	



16 LOCATION OPTIONAL  
 $\phi .266^{+.010}_{-.000}$  - 2 MTG. HOLES  
 FOR ELECTRICAL BONDING EXPOSE BARE METAL BY SANDING  
 BOTTOM OF BOTH MOUNTING SURFACE AND SPOT FACING  
 TOP OF MOUNTING HOLES 7/16 DIA

CONSTRUCTION  
 NON-METALLIC BASE, GASKET SEALED  
 (VENTED) CLASS A5, TYPE II/MIL-R-6106E  
 EXCEPT AS NOTED

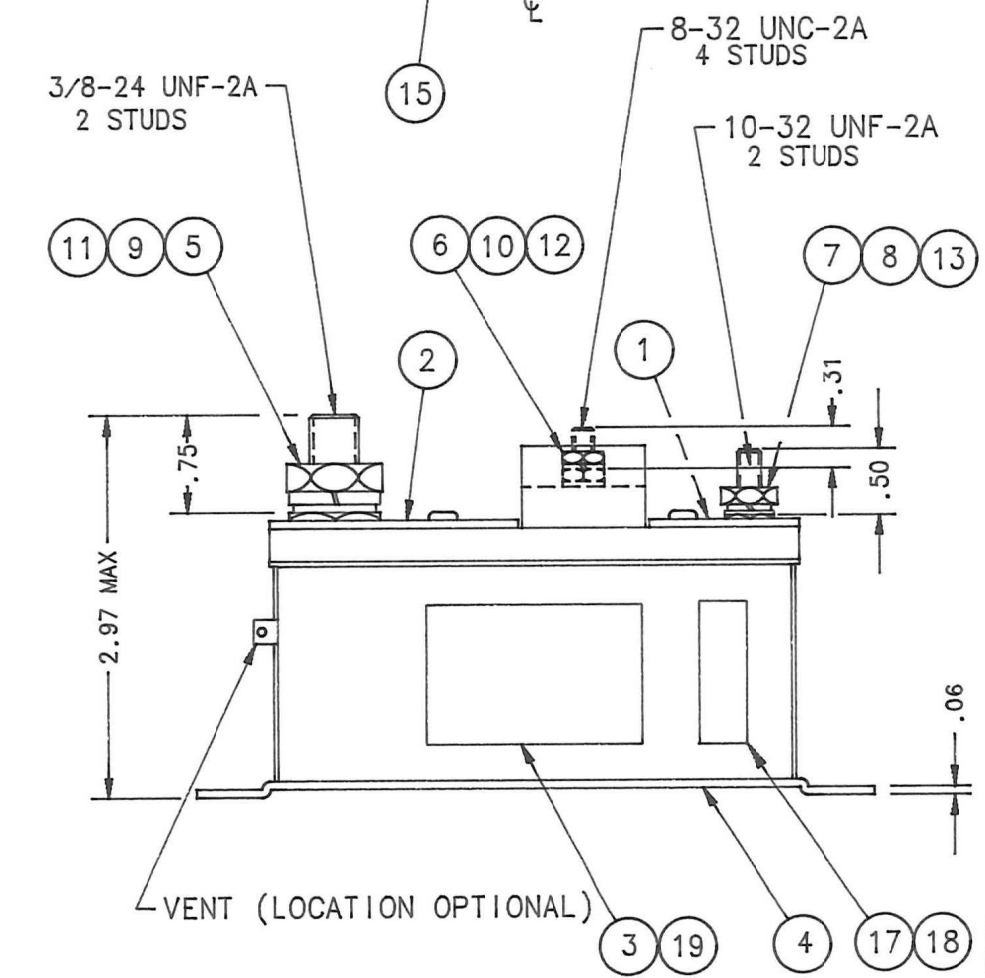
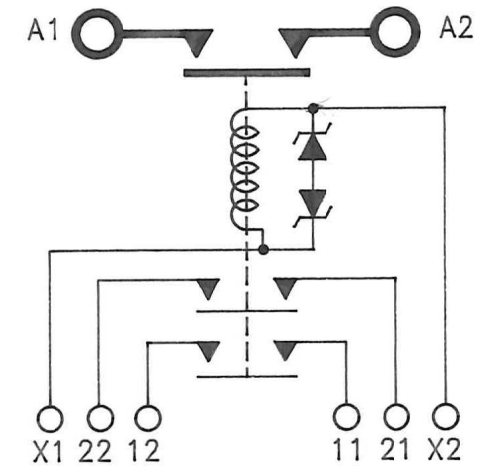
MAIN CONTACTS  
 CONFIGURATION SPST N.O. SIDESTABLE  
 VOLTAGE (NOMINAL) 28 VDC  
 CURRENT: RES. 300 AMP  
 RUPTURE 3000 AMP

AUXILIARY CONTACTS  
 CONFIGURATION 2PST NO  
 VOLTAGE (NOMINAL) 28 VDC  
 CURRENT RES. 5 AMP  
 IND. LAMP 5 AMP  
 3 AMP

COIL DATA  
 DUTY CYCLE INTERMITTENT  
 NOM COIL VOLTAGE 28 VDC  
 PICKUP MAX. 16.0 VDC AT 25°C  
 DROPOUT VOLTAGE 1.5 VOLTS TO 5.5 VOLTS AT 25°C  
 RESISTANCE 56 OHM ±20% AT 25°C  
 CURRENT .625 AMP MAX AT 25°C

ENVIRONMENTAL DATA  
 AMBIENT TEMP -55°C TO +71°C  
 VIBRATION: SINE 0.06" DA FROM 10 TO 55 HZ  
 10g FROM 55 TO 500 HZ

ACCELERATION 10g  
 SHOCK 25g MAXIMUM FOR 6 TO 9 MS  
 ALTITUDE 50,000 FEET MAXIMUM  
 LIFE ELECTRICAL 50,000 CYCLES MIN.  
 LIFE MECHANICAL 100,000 CYCLES MIN.  
 WEIGHT MAX. 2 LBS.



FIND NO	QTY REQD	PART OR IDENTIFYING NO	NOMENCLATURE OR DESCRIPTION	FSGM NO	DRAWING OR SPECIFICATION	MATERIAL OR NOTE
20	1	39529-044	OVERLAY-WIRING DIAGRAM			
19	1	39529-001	OVERLAY-NAME PLATE			
18	1	39529-024	OVERLAY			
17	1	58400-093	PLATE-FAA/PMA			
16	1	25695-001	PLATE-WARNING			
15	4	51200-020	SCREW-NO 4 X 1/4 SHEET METAL			S. STEEL
14	1	24320-001	PLATE-WIRING DIAGRAM			
13	2	51810-031	WASHER-LOCK, No.10 X.377 X.047 SP		AN935-10	STEEL
12	4	51808-021	WASHER-LOCK, No.8 X.296 x.040 SP		AN935-8	STEEL
11	2	51807-071	WASHER-LOCK, 3/8 X .688 X .094 SP		AN935-616	STEEL
10	4	51702-431	WASHER-FLAT, 3/8 X 11/64 X .032		AN960-8	STEEL
9	2	51704-161	WASHER-FLAT, 5/8 X .390 X .062			STEEL
8	2	51702-851	WASHER-FLAT, 7/16 X 13/64 X .032			STEEL
7	2	50410-061	NUT-10-32 X 3/8 X 1/8 HEX		AN345-10	STEEL
6	4	50408-081	NUT-8-32 X 5/16 X 3/32 HEX			STEEL
5	2	50407-141	NUT-3/8-24 X 9/16 X 9/32 HEX		AN315-6R	STEEL
4	1	19164-040	CONTACTOR ASSEMBLY-PRIMARY			
3	1	16043-001	PLATE NAME			
2	1	15749-001	PLATE-BASE COVER			
1	1	15749-002	PLATE-BASE COVER			

- NOTES:
- THE CONTACTOR SHALL CONFORM TO THE REQUIREMENTS OF MIL-R-6106E TO THE EXTENT SPECIFIED HEREIN.
  - FORMAL VERIFICATION OF COMPLIANCE OF THIS DRAWING TO MIL-R-6106E SHALL BE TO THE EXTENT SPECIFIED BY HARTMAN DOCUMENT NO. QR-531AM.
  - THIS UNIT IS SIMILAR TO THE QUALIFIED A-770F. (SEE TEST REPORT #141)
  - TERMINAL STUDS SHALL MEET THE REQUIREMENTS OF MIL-R-6106F PARA 3.4.8.
  - MATERIAL IDENTIFICATION:  
 TERMINAL BASE - GLASS MELAMINE PER MIL-P-15037C  
 BASE COVER PLATE - GLASS MAT POLYESTER PER MIL-M-14F  
 COVER - ALUMINUM
  - COIL TRANSIENT SUPPRESSED TO ±42 VDC MAX BY (2) 1N4972 JAN OR HIGHER ZENER DIODES, STARTING WITH S/N CH57770.

FIND NO	QTY REQD	PART OR IDENTIFYING NO	NOMENCLATURE OR DESCRIPTION	FSGM NO	DRAWING OR SPECIFICATION	MATERIAL OR NOTE
UNLESS OTHERWISE SPECIFIED DIMENSIONS ARE IN INCHES TOLERANCES ON			HARTMAN ELECTRICAL MANUFACTURING MANSFIELD, OHIO			
2 PL DEC.	3 PL DEC.	ANGLES	DR BY	RLS	97/03/04	CONTACTOR - INTERMITTENT DUTY 300 AMPS 28 VDC 093
± .03	± .015	± 1°	CHK BY	RS	97/03/14	
			ENGR	JDU	97.03.14	
			MFG	CE	97/03/14	
			RELEASE	SIZE	CODE IDENT	DWG NO.
			CONTR NO.	C	74063	A-770WA-2
			SCALE NONE		SHEET	