

P	LTR	DESCRIPTION	DATE	DWN	APVD
	B	INITIAL RELEASE	08JUL2020	SB	LI

SAFETY ORGANIZATIONS
THIS FILTER WILL BE FORMALLY RECOGNIZED, CERTIFIED OR APPROVED BY THE LISTED AGENCY. THEREFORE, ALL TEST/REQUIREMENTS SPECIFIED IN THE LATEST REVISION OF THE FOLLOWING AGENCY STANDARDS WILL BE MET:

UL RECOGNIZED* 20A 520V 50Hz/60Hz 40°C
CSA CERTIFIED** 20A 520V 50Hz/60Hz 40°C
*31 JULY 2020 ; **31 AUGUST 2020

OPERATING SPECIFICATION
LINE CURRENT/VOLTAGE: 20A, 520VAC
LINE FREQUENCY: 50/60Hz

MAXIMUM LEAKAGE CURRENT: 8.5mA @ 230VAC, 50Hz
OPERATING AMBIENT TEMPERATURE RANGE @ RATED CURRENT: -25°C TO +40°C

IN AN AMBIENT, T_a, HIGHER THAN 40°C, THE MAXIMUM OPERATING CURRENT, I_o, IS AS FOLLOWS:

$$I_o = I_r \sqrt{\frac{85 - T_a}{45}}$$

RELIABILITY SPECIFICATIONS
STORAGE TEMPERATURE: -40°C TO +85°C
HUMIDITY: 21 DAYS @ 40°C AND 95% RH

TEST SPECIFICATIONS
INDUCTANCE, NOMINAL: 4mH

CAPACITANCE @ 1kHz
LINE TO GROUND, NOMINAL: 1.86µF
NEUTRAL TO GROUND, NOMINAL: 2.2µF
LINE TO NEUTRAL, NOMINAL: 10µF

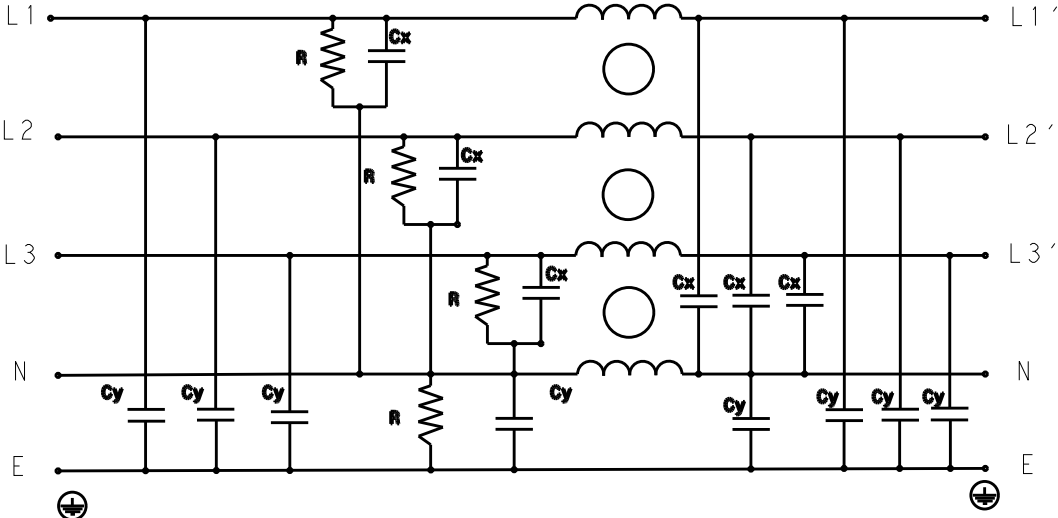
DISCHARGE RESISTOR
L/L I.R. 2MΩ 1W
L/N I.R. 1MΩ 1W
L/G I.R. 2MΩ 1W
N/G I.R. 1MΩ 1W
IR (NO DISCHARGE RESISTOR) 20°C, 50% RH AND 100VDC, MIN: 6MΩ

RECOMMENDED RECEIVING INSPECITON HIPOT
LINE TO GROUND FOR 1 MINUTE: 2856VDC
LINE TO LINE FOR 1 MINUTE: 2236VDC
LINE TO NEUTRAL FOR 1 MINUTE: 1290VDC

FILTER APPROVAL
THE BEST WAY TO SELECT AND QUALIFY A FILTER IS FOR YOUR ENGINEERING TO TEST THE UNIT IN YOUR EQUIPMENT.

LINE SIDE

LOAD SIDE

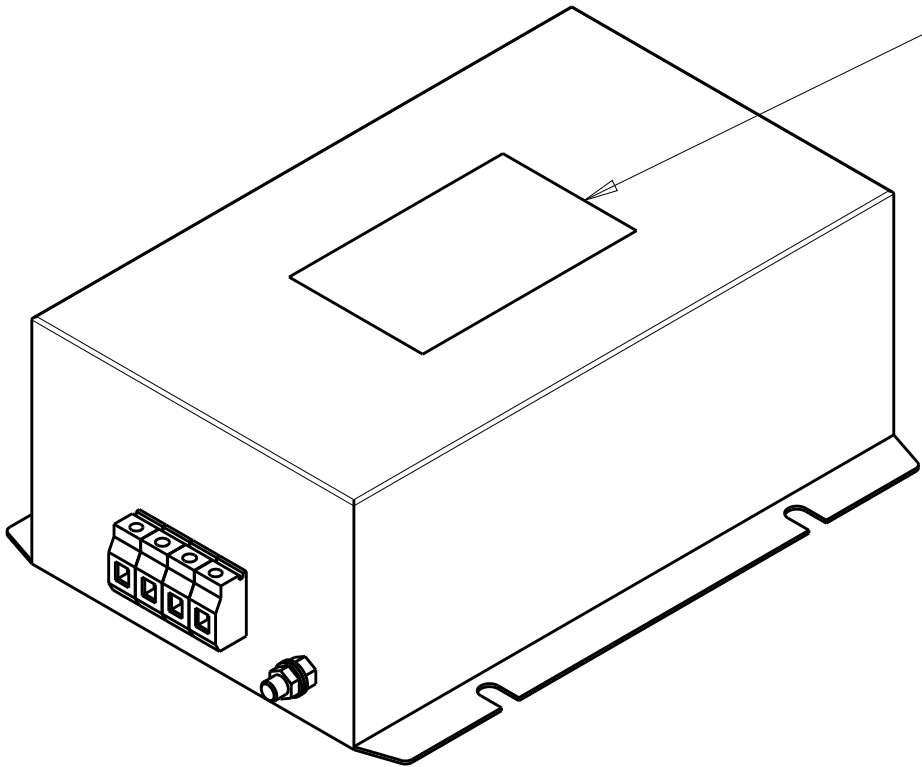



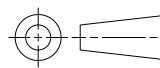
SCHEMATIC

TYPICAL INSERTION LOSS
COMMON MODE 50/50Ω; DIFFERENTIAL MODE 50/50Ω

MHz	0.01	0.05	0.15	0.5	1	3	5	10	30
CM	55	57	60	51	45	38	30	28	32
DM	35	32	52	50	47	36	33	30	25

LABEL TO TE MARKING SPECIFICATION



THIS DRAWING IS A CONTROLLED DOCUMENT.		DWN 28FEB2020 SHRICARANA B	 TE Connectivity		
DIMENSIONS: mm		CHK 28FEB2020 LEO IRUDHAYARAJ			
		APVD 28FEB2020 LEO IRUDHAYARAJ			
TOLERANCES UNLESS OTHERWISE SPECIFIED:		PRODUCT SPEC			
0 PLC ±0.5 1 PLC ±0.4 2 PLC ±0.4 3 PLC ±0.130 4 PLC ±0.0500 ANGLES ±0.5		APPLICATION SPEC	NAME POWER LINE FILTER 20KEPS10BFPW		
MATERIAL		WEIGHT	SIZE A3	CAGE CODE 00779	DRAWING NO C-4-1609968-4
FINISH		CUSTOMER DRAWING	SCALE 1:2	SHEET 1 OF 2	REV B

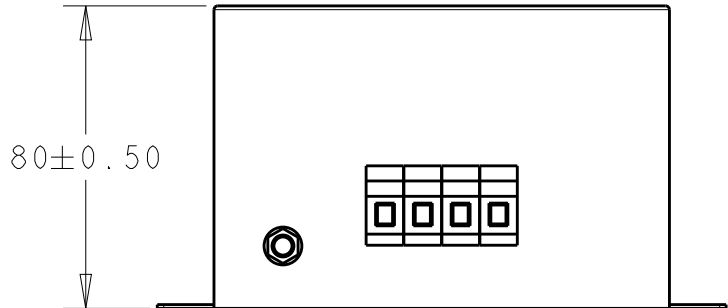
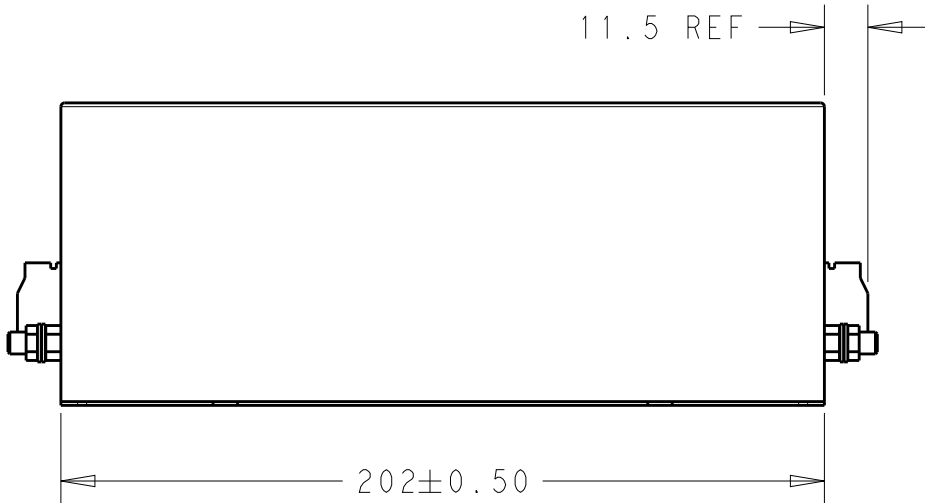
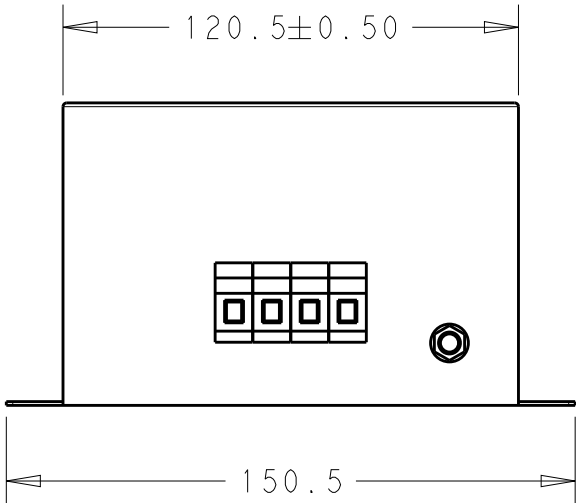
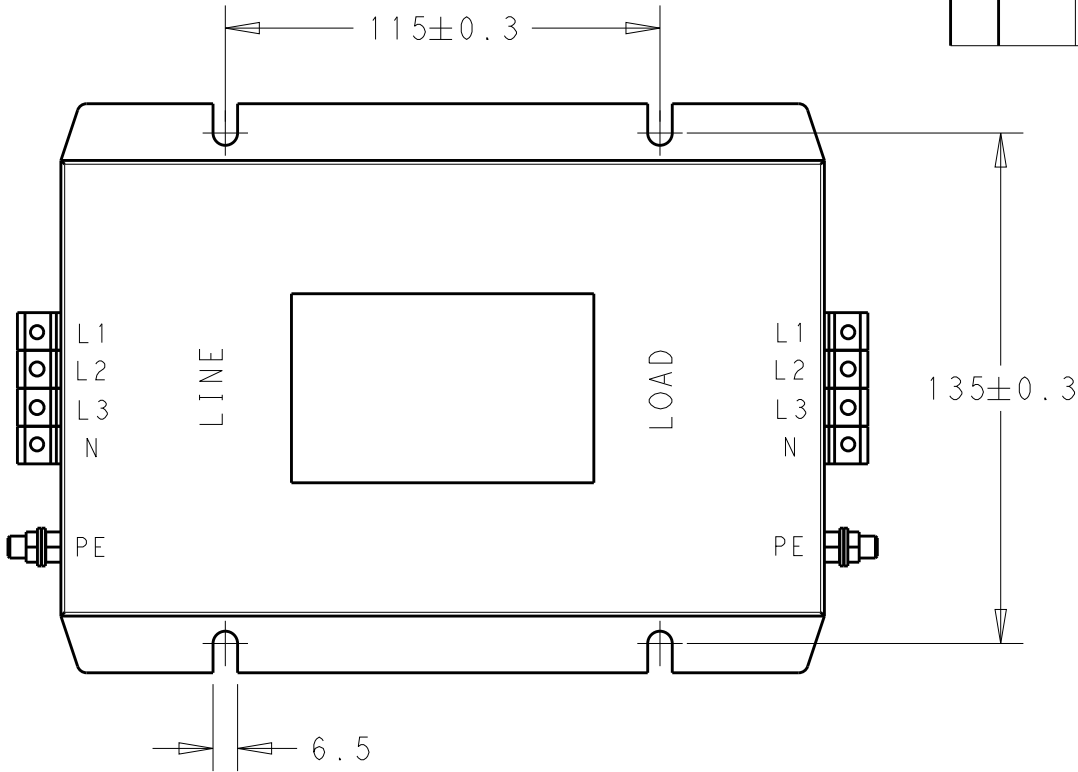
© 2020 TE Connectivity. All Rights Reserved.


NOTE 1 GROUND CONNECTION:
DO NOT LOOSEN INNER GROUND NUTS.
TORQUE OUTER TERMINAL SCREWS: 0.5Nm / 4.5 in.lbs
TORQUE GROUND NUTS: 2.5-3Nm

NOTE 2 INPUT OUTPUT CONNECTION TERMINAL
AWG SIZE: 26-12 AWG
WIRE SECTION: 4 mm²
THREADED BOLT SIZE FOR GROUND: M6

REVISIONS

P	LTR	DESCRIPTION	DATE	DWN	APVD
		SEE SHEET 1			



THIS DRAWING IS A CONTROLLED DOCUMENT.		DWN SHRICHARANA B 28FEB2020	 TE Connectivity		
DIMENSIONS: mm		CHK LEO IRUDHAYARAJ 28FEB2020			
TOLERANCES UNLESS OTHERWISE SPECIFIED:		APVD LEO IRUDHAYARAJ 28FEB2020			
0 PLC ±0.5 1 PLC ±0.4 2 PLC ±0.130 3 PLC ±0.0500 4 PLC ±0.0500 ANGLES ±0.5		PRODUCT SPEC -			
MATERIAL -		FINISH -	NAME POWER LINE FILTER 20KEPS10BFPW		
			SIZE A3	CAGE CODE 00779	RESTRICTED TO -
			DRAWING NO C-4-1609968-4		
			WEIGHT -		
			CUSTOMER DRAWING	SCALE 1:2	REV B
				SHEET 2 OF 2	