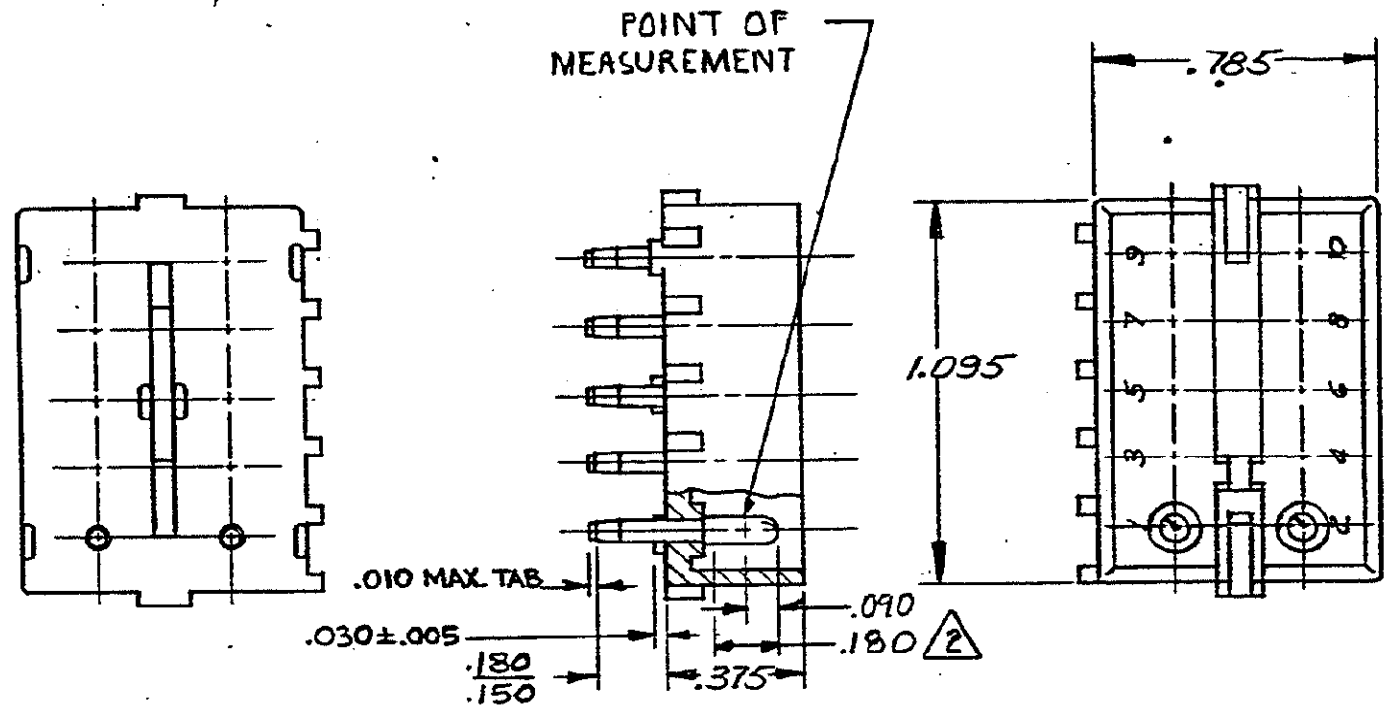
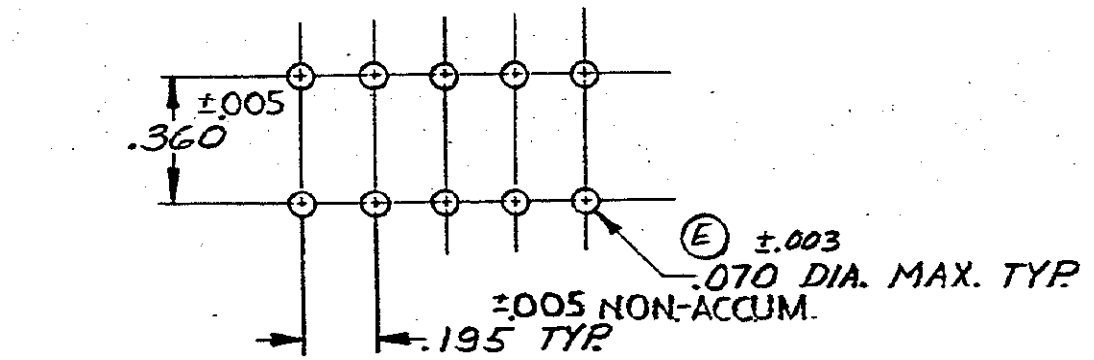


2

S



- 1. PARTS COMPLY WITH TE SOLDERABILITY SPEC. NO. 109-11-3.
- 2. CONTACT IS PLATED OVERALL WITH .000050 NICKEL, THEN .000030 GOLD OVER CONTACT LENGTH INDICATED AND TIN PLATED ON SOLDER TAIL END.
- 3. DIMENSION SHOWN REPRESENT PRODUCT IN DRY CONDITION. ADDITIONAL 2% GROWTH DUE TO END USE LOCATION MOISTURE ABSORPTION MAY OCCUR AND SHOULD BE ACCOUNTED FOR.



RECOMMENDED LAYOUT FOR .062 P.C. BOARD

SUPERSEDED BY 2-1586544-0

| 2-380991-0 | NYLON - NATURAL | COPPER ALLOY - GOLD |
|--------------|-------------------|------------------------|
| 1-380991-0 | NYLON - NATURAL | COPPER ALLOY - PRE-TIN |
| ASSEMBLY NO. | HSG. MATL & COLOR | PIN MATL & FINISH |

DIMENSIONS IN INCHES. DO NOT SCALE PRINT.



| REVISION | REVISION RECORD | DR | CHK | DATE |
|----------|---------------------------|----|-----|------------|
| T4 | REVISED PER ECR-21-117185 | PJ | VS | 25OCT 2021 |
| T3 | REVISED PER ECR-18-008156 | JB | DZ | 19JUN 2018 |
| T2 | REVISED PER ECR-13-008342 | AV | RP | 12NOV13 |
| T1 | REVISED PER ECO-11-005294 | RK | HMR | 08APR11 |

| NUMBER | DESCRIPTION |
|--------|-------------|
| 166086 | |

| | | | | | |
|---|--|---|--|---|--|
| DR <i>G. Edelman</i> 6-12-73 CHK <i>E. Cramer</i> 6-13-73 DE APP <i>Chm Puttenberg</i> 6/13/73 | | MATERIAL AND FINISH SEE-TABLE WIRE - RANGE - INSULATION TOLERANCE EXCEPT AS NOTED ±.015 ±1° 0' | | CUSTOMER COPY REFERENCE ONLY CLASS # TYPE # | |
| STE TE Connectivity NO 380991 R1V T4 | | | NAME 10 CIRCUIT MATE-N-LOK P.C. BOARD PIN HEADER | | |