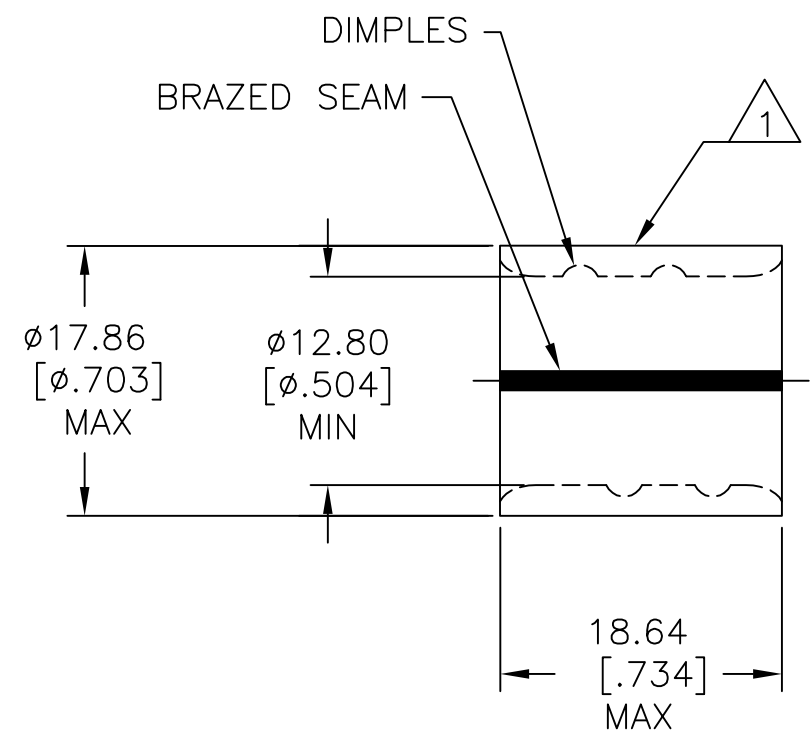




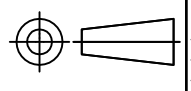
REVISIONS					
P	LTR	DESCRIPTION	DATE	DWN	APVD
	H3	REVISED PER ECO-15-018389	24DEC2015	NK	DR
	H4	REVISED PER ECO-17-004099	29AUG2017	RS	DR

<b>AMP</b> WIRE RANGE	 Listed FILE E13288	 LR7189 Certified
2/0 AWG SOLID OR STRANDED	2/0 AWG SOLID OR STRANDED	2/0 AWG SOLID OR STRANDED



- 1 STAMP AMP 2/0W\* 125  
LOCATE APPROX AS SHOWN.
- 2 MATERIAL THK: 2.03±0.05[.080±.002]
- 3 TIN PL 0.00254 [.000100] MIN THK  
PER ASTM B545.
- 4 NOTE DELETED.
- 5 NOTE DELETED.
- 6 STAMP FOR MANUFACTURING LOCATION OR  
CODE PERMISSIBLE.
- 7 NOTE DELETED.
- 8 NOTE DELETED.
- 9 NOTE DELETED.
- 10 NOTE DELETED.

	50	LOOSE PIECE	36948
FINISH	QTY	PACKAGING TYPE	PART NO.

AMP INCORPORATED CUSTOMER SERVICE SYSTEMS		MAX RECOMMENDED OPERATING TEMPERATURE: 170°C [338°F]	THIS DRAWING IS A CONTROLLED DOCUMENT.		DWN DK SCHRUM 5/24/93	 TE Connectivity				
FOR ADDITIONAL PRODUCT INFORMATION OR COPIES OF DRAWINGS AND TECHNICAL DOCUMENTS	PRODUCT INFORMATION CENTER 1-800-522-6752	VOLTAGE RATING: N/A	DIMENSIONS: mm [INCHES]	TOLERANCES UNLESS OTHERWISE SPECIFIED:	CHK RD HEIM 1/27/94					NAME SPLICE, PARALLEL, SOLISTRAND, 2/0 AWG
FOR APPLICATION TOOLING INFORMATION	TOOLING ASSISTANCE CENTER 1-800-722-1111	CIRCULAR MIL AREA: 60.6-76.3mm² [119,500-150,500] SOLID OR STRANDED		0 PLC ± - 1 PLC ± - 2 PLC ± 0.20[.008] 3 PLC ± - 4 PLC ± - ANGLES ± -	APVD JL MECKLEY 1/27/94	SIZE	CAGE CODE	DRAWING NO	RESTRICTED TO	
FOR ORDER ENTRY	1-800-526-5142	THIS DRAWING IS A CONTROLLED DOCUMENT FOR AMP INCORPORATED. IT IS SUBJECT TO CHANGE AND THE CONTROLLING ENGINEERING ORGANIZATION SHOULD BE CONTACTED FOR THE LATEST REVISION.	MATERIAL COPPER PER ASTM B-152	FINISH SEE TABLE	PRODUCT SPEC -	WEIGHT -	A3	00779	C-36948	-
					CUSTOMER DRAWING		SCALE 2:1	SHEET 1 OF 1	REV H4	