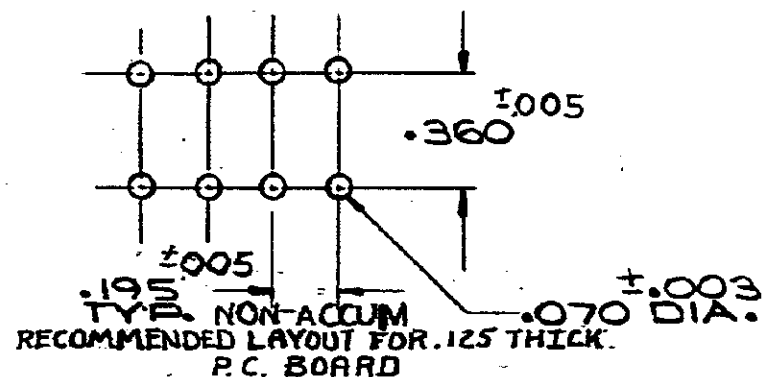
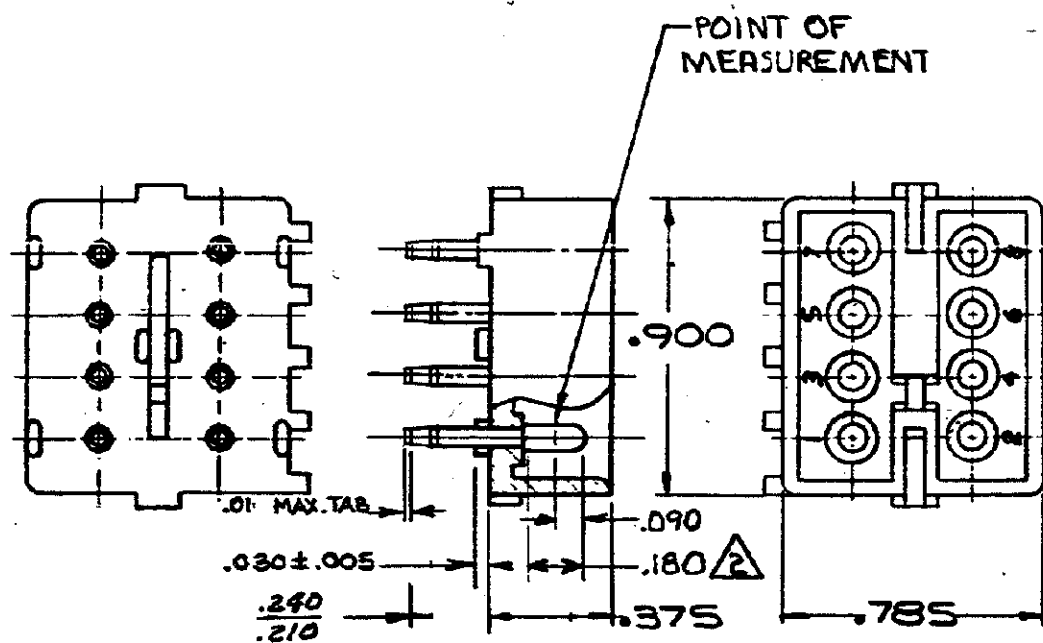


S



4. DIMENSION SHOWN REPRESENT PRODUCT IN DRY CONDITION. ADDITIONAL 2% GROWTH DUE TO END USE LOCATION MOISTURE ABSORPTION MAY OCCUR AND SHOULD BE ACCOUNTED FOR.

L3	REVISED PER ECR-21-117185	PJ	VS	20OCT 2021
L2	REV PER ECO-10-000445	KK	AEG	09JAN
L1	ADDITIONAL			
L4	REVISION RECORD	DR	CHK	DATE

△ OBSOLETE

1. PARTS COMPLY WITH AMP SOLDERABILITY

SPEC. NO. 109-11-3

△ 2 CONTACT IS PLATED OVERALL WITH .000050 NICKEL, THEN .000030 GOLD OVER CONTACT LENGTH INDICATED AND MATTE TIN ON SOLDER TAIL END.

△ 3 OBSOLETE PARTS: OBSOLETE CIS STREAMLINING PER D.RENAUD/D.SINISI

350426-2	NYLON - NATURAL	COPPER ALLOY - GOLD
350426-11	NYLON - NATURAL	COPPER ALLOY - PRE-TIN
ASSEMBLY NO.	HGS. MATL. - COLOR	FIN MATL. - FINISH

DWG SIZE		NUMBER	NAME	REMARKS	ITEM NO
<p>© 1978 BY AMP INCORPORATED. ALL RIGHTS RESERVED. AMP PRODUCTS COVERED BY PATENTS AND/OR PATENTS PENDING.</p>					
MATERIAL AND FINISH		<p>SEE TABLE</p>			
WIRE - GAGE - INSULATION		<p>TE Connectivity</p>			
TOLERANCE EXCEPT AS NOTED		SCALE		LOC	REV
AS NOTED		1/16"		CM B	L3
<p>NAME: 8 CIRCUIT MATE-N-LOK P.C. BOARD PIN HEADER</p>					

PRINT DIST