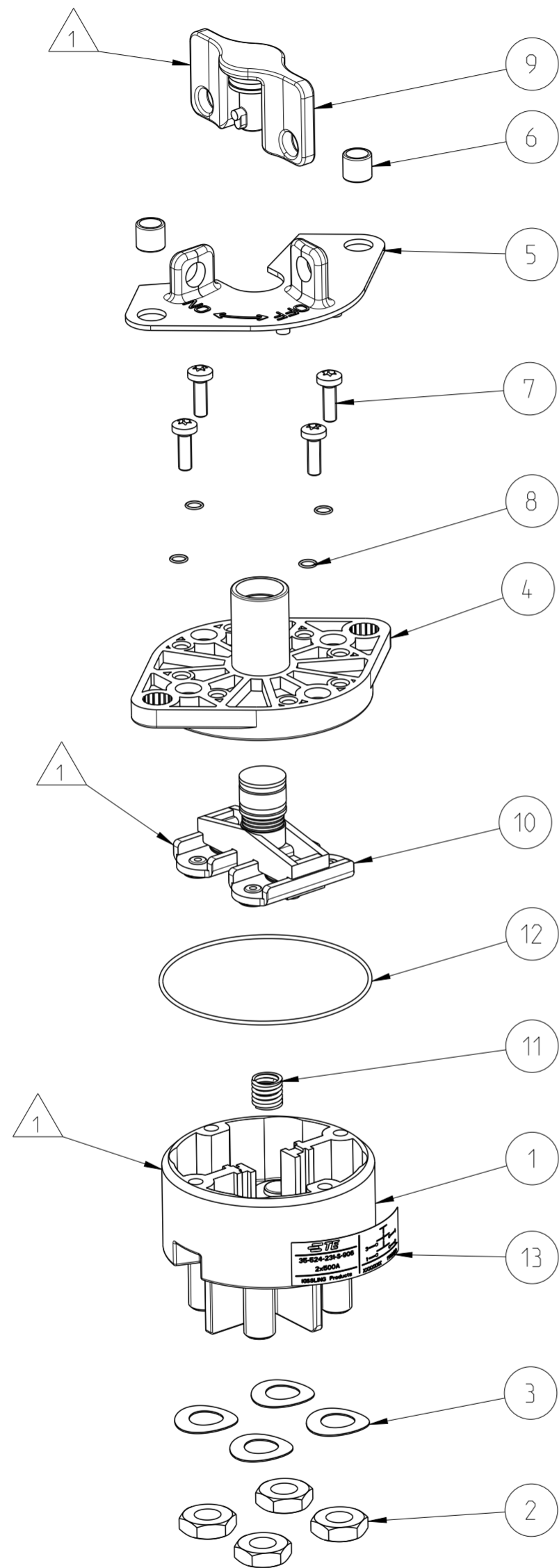


OVERVIEW  
Übersicht



PROJECT NO. :

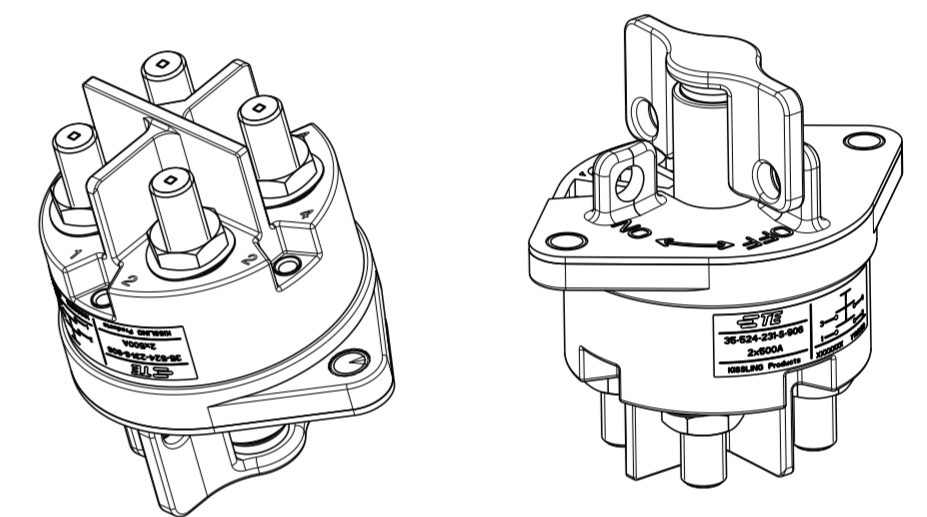
USED ON

NOTES

Bemerkungen

1 SUB-ASSEMBLY  
Unterbaugruppe

2 POSITION NUMBERS ARE SHOWN WITH A CIRCLE ○  
Positionsnummern sind mit einem Kreis dargestellt ○



ISO 1:2

QTY REQD PER ASSY TCPN	REV.	PART/TCPN NO.	REV.	DESCRIPTION	WEIGHT(g)	COLOUR	TEM NO.
		1	K1159832	A	Label 35-524-231-S-906-1 Typenschild 35-524-231-S-906-1	0.28	
		1	K1060507	A	O-RING 77x2 O-Ring 77x2	0.96	RED rot
		1	K1166633	A	RETAINING SPRING 35-550-122 Rueckholfeder 35-550-122	0.02	
		1	K1157619	A	ACTUATION AXIS COMPLETE 35-550-100 Betaetigungsachse kompl. 35-550-100	115	
		1	K1120139	A	SWITCH LEVER DF 35-400-018 Schalthebel DF 35-400-018	21.299	BLACK schwarz
		4	K1127338	A	O-RING 5x1 O-Ring 5x1	0.018	BLACK schwarz
		4	K1147014	A	FLAT HEAD SCREW ISO 14583 M5x16 Flachkopfschraube ISO 14583 M5x16	3.6	
		2	K1060665	A	BUSHING 35-550-014 Bucshe 35-550-014	3.1	
		1	K1159654	A	KEY HOLDER 35-550-105 Schlosshalter 35-550-105	16.8	BLACK schwarz
		1	K1148005	A	MOUNTING SOCKET 35-550-019 Befestigungssockel 35-550-019	66.1	BLACK schwarz
		4	K1060183	A	SPRING WASHER DIN 137 B12 Federscheibe DIN 137 B12	2.67	
		4	K1060156	A	HEX NUT DIN 439 M12 6kt mutter DIN 439 M12	11.6	
		1	K1137218	A	CAP 35-550-001 Haube 35-550-001	384.6	BLACK schwarz
			K1159655		PART/TCPN NO.		
			A		REVISION OF EACH ASSY NO (WHEN BLANK, USE DWG REVISION)		
			-		3D-PDF REVISION IF AVAILABE		
			682.9		WEIGHT OF EACH ASSY NO (g)		
				PARTS LIST			

REV.	DATE	DWN	APVD	DESCRIPTION
A	25JAN2024	SS	RB	TE STANDARD
LTR	REVISION RECORD			

PRODUCT CHARACTERISTICS ACC. QMP_EMEA_012 BESONDERE MERKMALE NACH QMP_EMEA_012	
DIMENSIONS:	TOLERANCES UNLESS OTHERWISE SPECIFIED:
mm	DIN ISO 2768 mK
0 PLC	±
1 PLC	±
2 PLC	±
3 PLC	±
4 PLC	±
ANGLES:	
SURFACE TEXTURE	

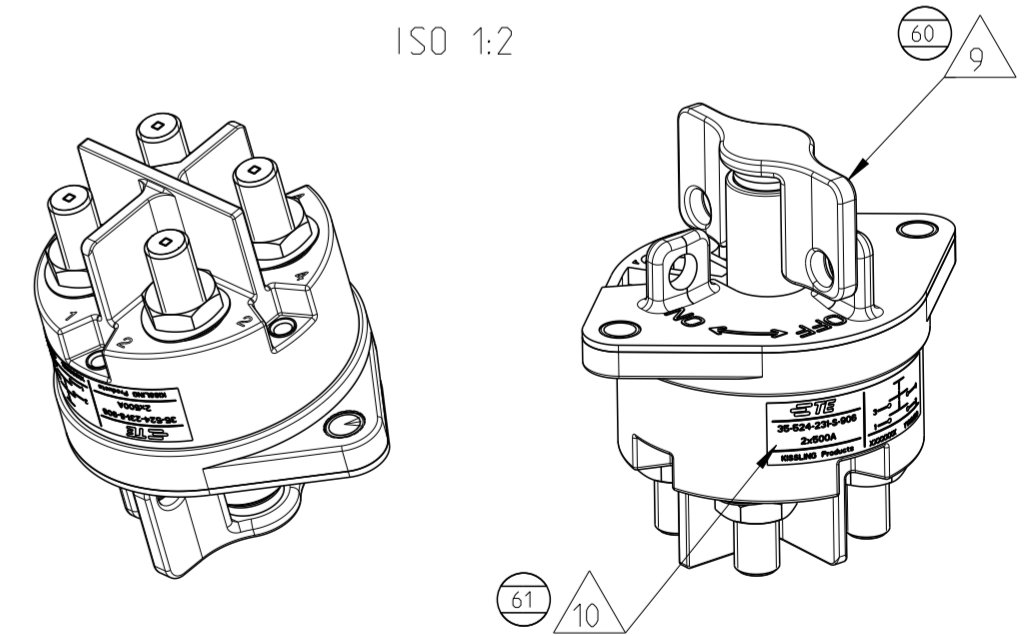
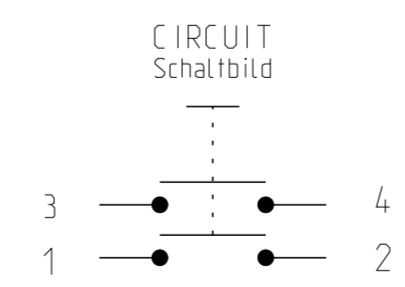
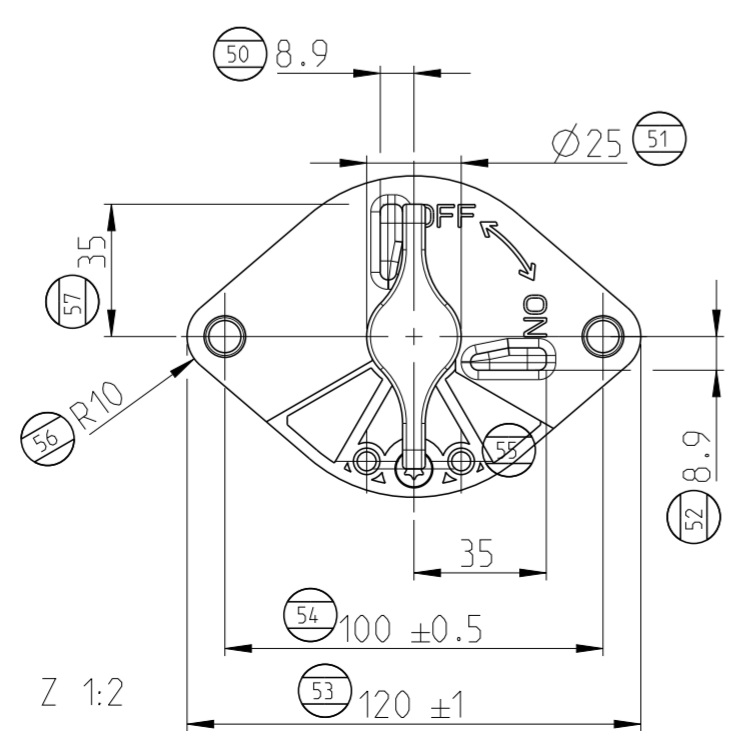
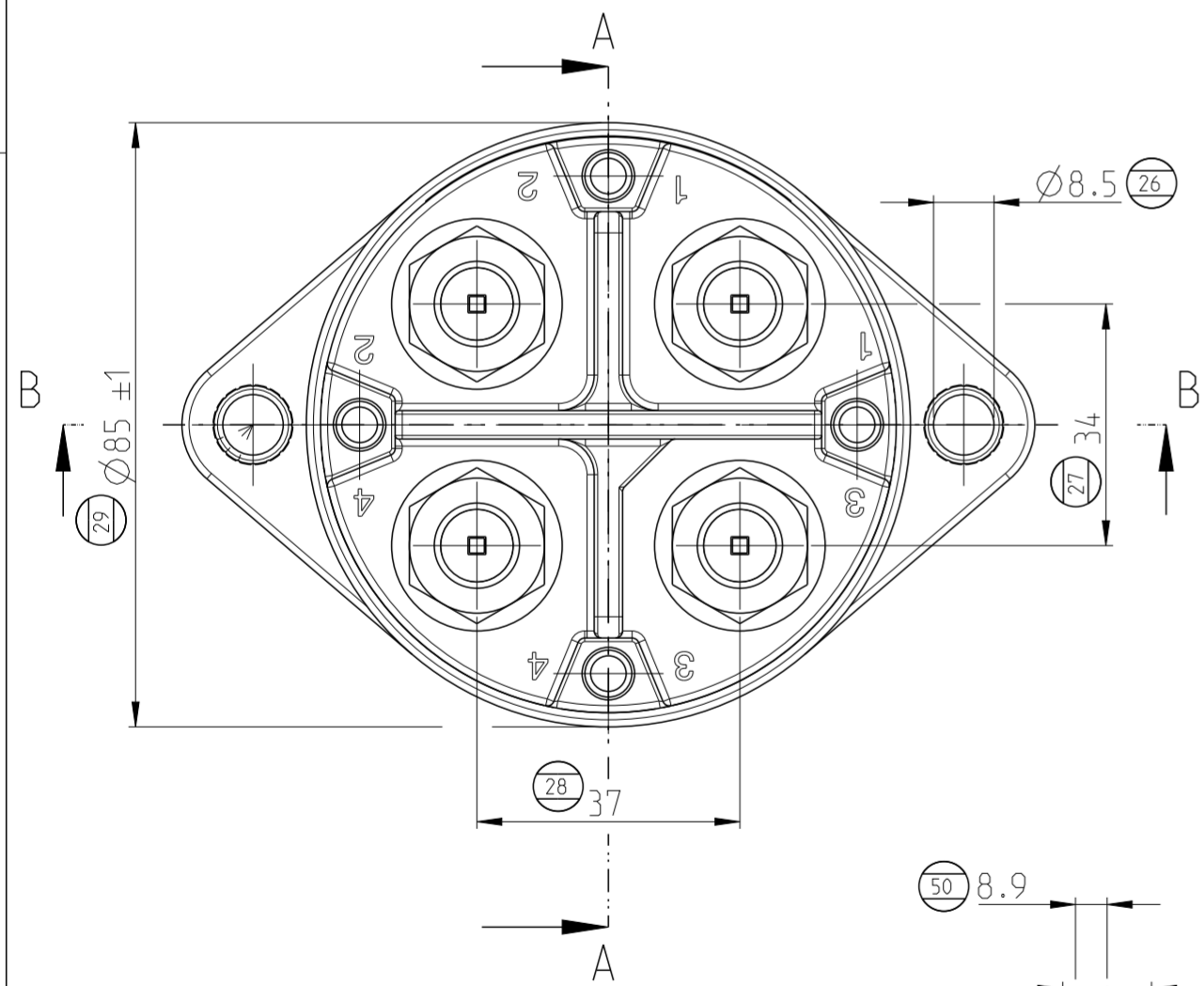
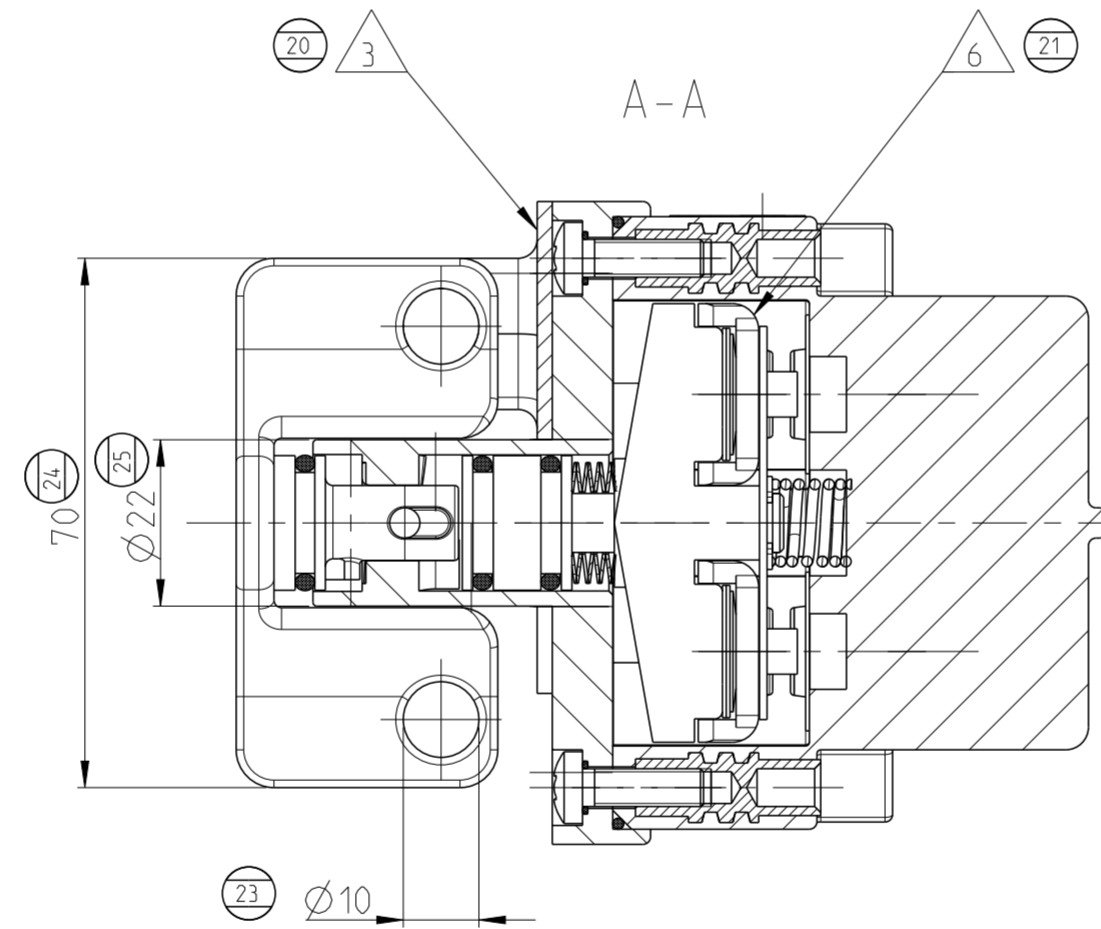
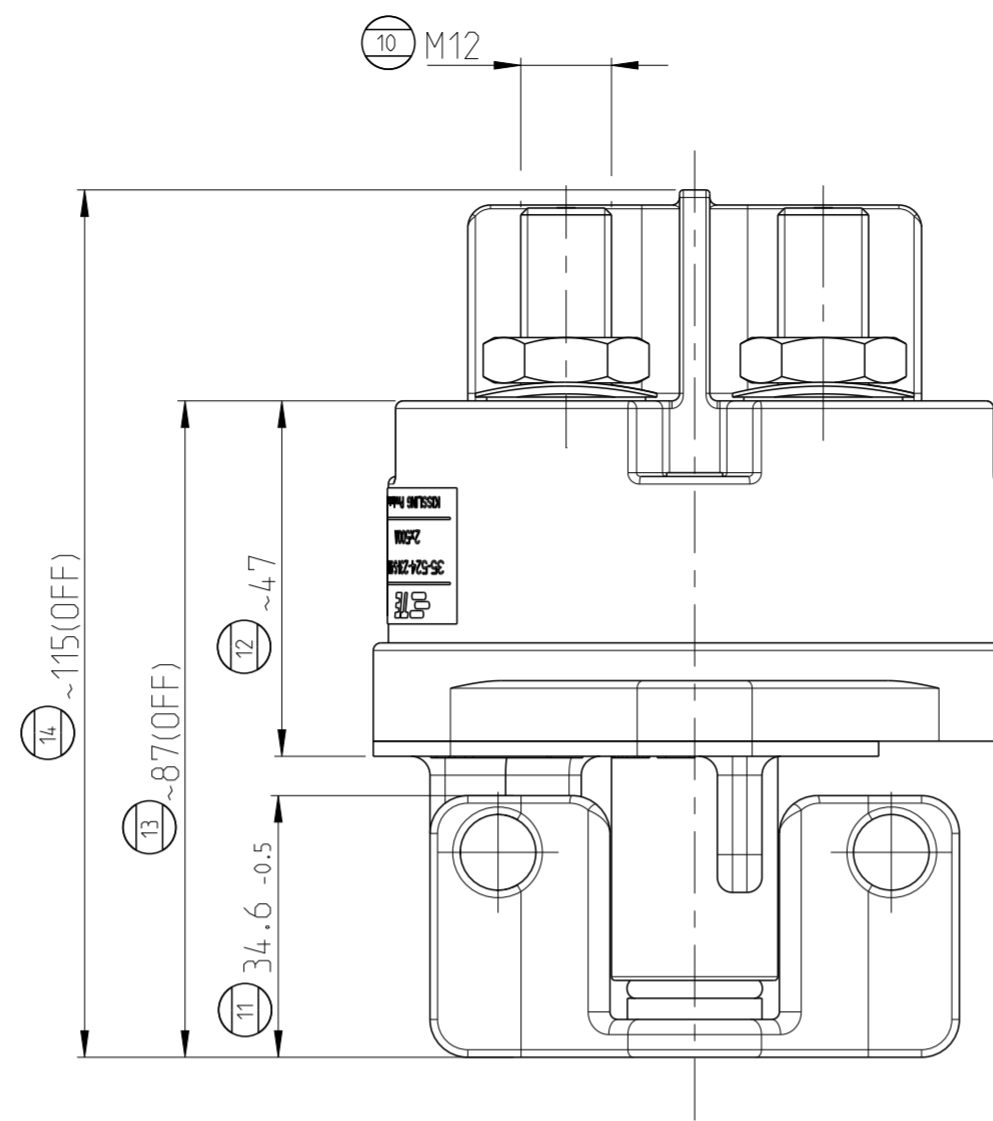
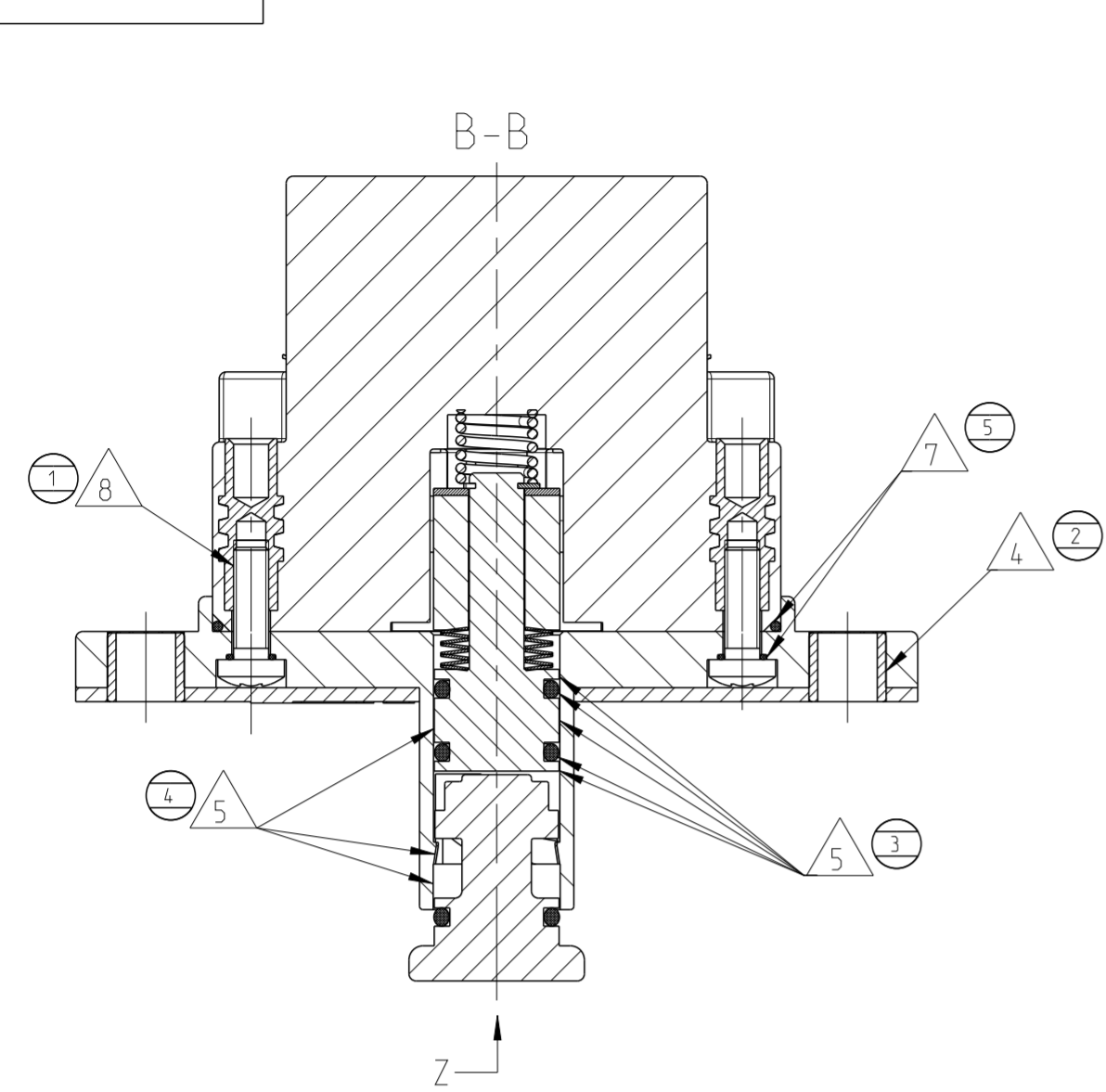
DWN	07DEC2023	MATERIAL	HEAT TREAT
CHK	07DEC2023		
APVD	07DEC2023		
NAME			
BATTERY DISCONNECTOR 2x500A Batterie trennschalter 2x500A			
SCALE	SIZE	DRAWING NO	SHEET
1:2	A2	35-524-231-S-906	1 OF 2
			REV
			A

THIS INFORMATION IS CONFIDENTIAL AND PROPRIETARY TO TE CONNECTIVITY LTD. AND ITS WORLDWIDE SUBSIDIARIES AND AFFILIATES (TE). IT MAY NOT BE DISCLOSED TO ANYONE, OTHER THAN TE PERSONNEL, WITHOUT AUTHORIZATION FROM TE (www.te.com).

NOTES

Bemerkungen:

- 3 KEY HOLDER PRESSED ON MOUNTING SOCKET  
Schlosshalter auf Befestigungssockel gepresst
- 4 BUSHING PRESSED IN MOUNTING SOCKET  
Buchse in Befestigungssockel eingepresst
- 5 BEFORE MOUNTING THE ACTUATION AXIS CPL. GREASE THE O-RINGS AND THE MOUNTING SOCKET WITH MOBILGREASE 28 (K1011876) ALL AROUND AFTER ASSEMBLING - WIPE OFF ANY EXCESS GREASE  
Vor dem Montieren der Betaetigungsachse kpl. die O-Ringe und den Sockel mit Mobilgrease 28 (K1011876) umlaufend fetten Nach der Montage ueberschuessiges Fett abwischen
- 6 PAY ATTENTION TO THE POSITION OF THE SWITCH BRIDGES WHEN INSERTING THE ACTUATION AXIS CPL.  
Beim Einschieben der Betaetigungsachse kpl auf die Position der Schaltbruecken achten
- 7 DO NOT TWIST THE O-RING DURING ASSEMBLY.  
Der O-Ring darf bei der Montage nicht verdreht werden.
- 8 SCREW IN THREADED BUSH DENSELY GLUED WITH LOCTITE 278 (K1150339) PERMISSIBLE TORQUE 2,8 Nm  
Schraube in Gewindebuchse dichtgeklebt mit Loctite 278 (K1150339) zul. Anzugsmoment 2,8 Nm
- 9 NOTE THE PLUG-IN DIRECTION OF THE SWITCH LEVER  
Einsteckrichtung des Schalthebels beachten
- 10 PAY ATTENTION TO THE POSITION OF THE LABEL  
Position des Typenschilds beachten
- 40 11 100% ELECTRICAL FUNCTION TEST ON/OFF  
100% elektrischer Funktionstest Ein/Aus
- 41 12 100% INSPECTION OF THE SEAL ON PRESENCE, CORRECT ASSEMBLY AND ALIGNMENT  
100% Pruefung der Dichtung auf Anwesenheit, korrekte Montage und Ausrichtung
- 42 13 GOOD PART MARKING IS DONE BY STICKING THE LABEL ON  
Gutteilmarkierung erfolgt mit Aufkleben des Typenschilds
- 43 14 PACKED IN TRAY OR SPECIAL FORM ACCORDING TO TE PACKAGING SPECIFICATION: VAW K6000205  
Verpackt im Tray oder Spezialform nach TE Verpackungsspezifikation: VAW K6000205



THIS INFORMATION IS CONFIDENTIAL AND PROPRIETARY TO TE CONNECTIVITY LTD. AND ITS WORLDWIDE SUBSIDIARIES AND AFFILIATES (TE). IT MAY NOT BE DISCLOSED TO ANYONE, OTHER THAN TE PERSONNEL, WITHOUT AUTHORIZATION FROM TE (www.te.com).

REVISION RECORD	DATE	DWN	APVD
- SEE SHEET 1	-	-	-

PRODUCT CHARACTERISTICS ACC. QMP_EMEA_012 BESONDERE MERKMALE NACH QMP_EMEA_012	
DIMENSIONS:	TOLERANCES UNLESS OTHERWISE SPECIFIED:
mm	DIN ISO 2768 mK
0 PLC	±
1 PLC	±
2 PLC	±
3 PLC	±
4 PLC	±
ANGLES:	
SURFACE TEXTURE	

DWN	07DEC2023	MATERIAL	HEAT TREAT
CHK	07DEC2023		
APVD	07DEC2023		
NAME: BATTERY DISCONNECTOR 2x500A Batterie trennschalter 2x500A			
SCALE	1:1	SHEET	2 OF 2
SIZE	A2	REV	A
DRAWING NO	35-524-231-S-906		