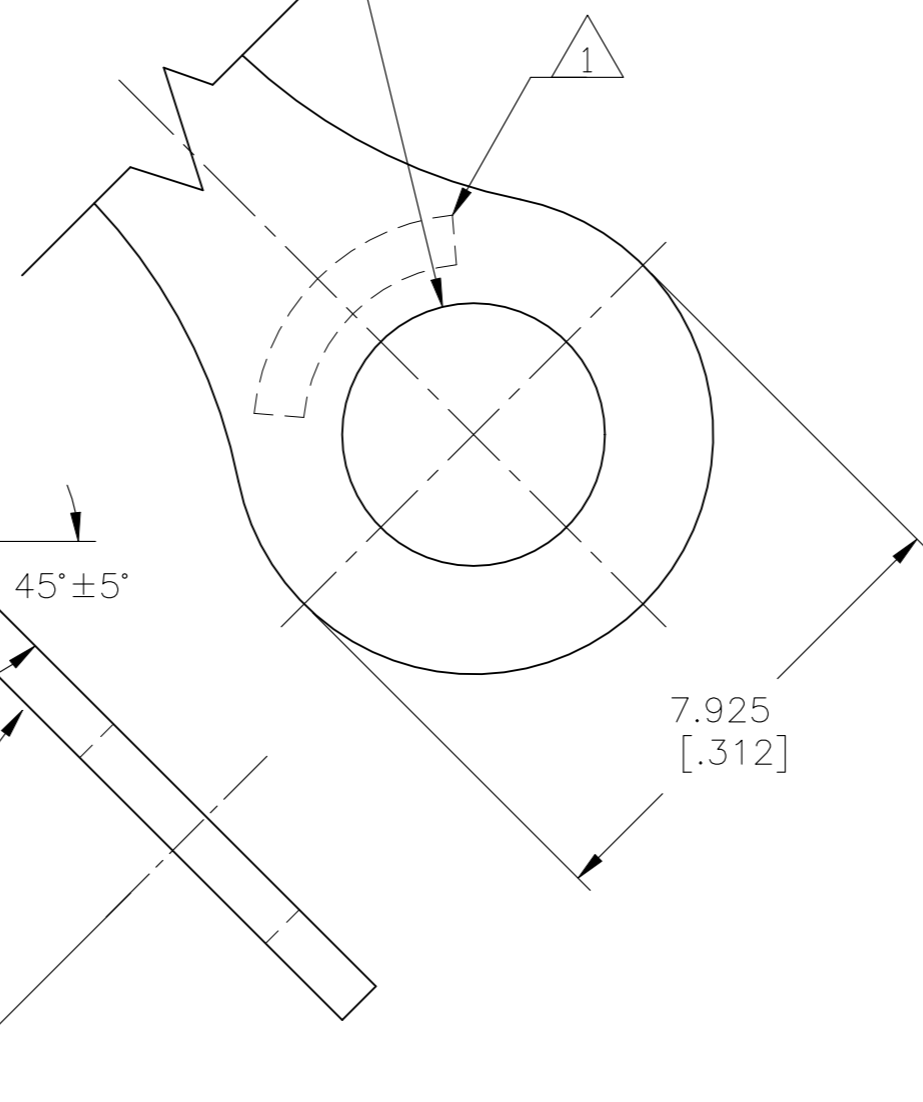
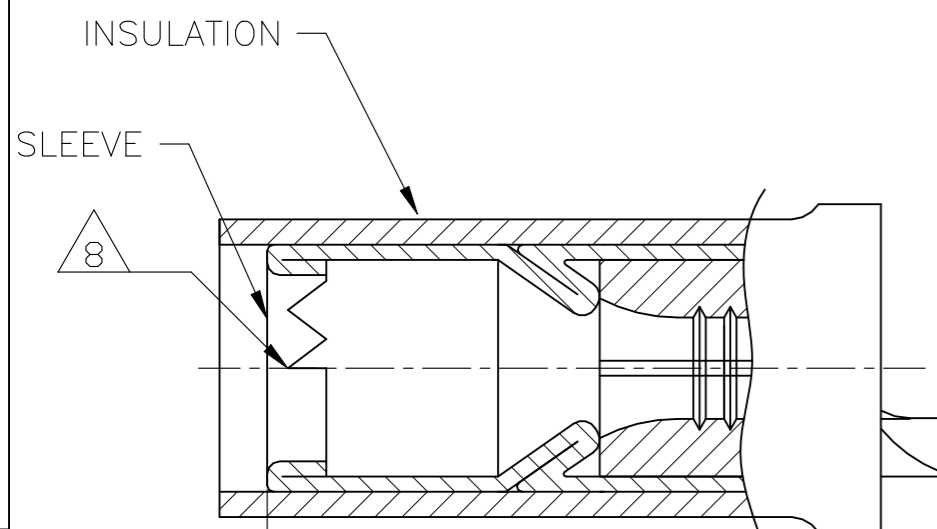


REVISIONS				
P	LTR	DESCRIPTION	DATE	APVD
B1		ECR-22-138429	18MAY2022	LP DSC

AMP
WIRE RANGE
18-16 AWG
STRANDED

$\phi 4.343 \pm 0.076$
[$\phi .171 \pm .003$]
FOR M4[#8]STUD



- 1 STAMP "AMP 18-16*" APPROX AS SHOWN
- 2 FOR 1.397 [.055] TO 3.429 [.135] WIRE INSULATION DIA.
- 3 BODY MATERIAL THK: 0.787 ± 0.051 [.031 ± .002]
- 4 MATERIAL:
BODY & SLEEVE: COPPER ASTM B152
INSULATION: PTFE PER ASTM D4895
- 5 FINISH:
BODY 0.0076 [.0003],
SLEEVE 0.001651 [.000065] AVG EXT THK
NICKEL PLATE PER SAE AMS-QQ-N-290.
INSULATION COLOR: ORANGE
- 6 NOTE DELETED
- 7 NOTE DELETED
- 8 INTERNAL EDGE FEATURE MAY BE SOLID OR SCALLOPED

0.787
[.031]
MIN

BODY
 4.089
[.161]
MIN

7.925
[.312]

$45^\circ \pm 5^\circ$

1000	LOOSE PIECE	341240
QTY	PACKAGE TYPE	PART NUMBER

TEC INCORPORATED CUSTOMER SERVICE SYSTEMS	
FOR ADDITIONAL PRODUCT INFORMATION OR COPIES OF DRAWINGS AND TECHNICAL DOCUMENTS	PRODUCT INFORMATION CENTER 1-800-522-6752
FOR APPLICATION TOOLING INFORMATION	TOOLING ASSISTANCE CENTER 1-800-722-1111
FOR ORDER ENTRY	1-800-526-5142

MAX RECOMMENDED OPERATING TEMPERATURE: 288°C [550° F]
VOLTAGE RATING: 300V MAX
CIRCULAR MIL AREA: $0.81-1.42\text{mm}^2$ [1,600-2,800] STRANDED WIRE ONLY

THIS DRAWING IS A CONTROLLED DOCUMENT.	
DIMENSIONS: mm [INCHES]	TOLERANCES UNLESS OTHERWISE SPECIFIED:
	0 PLC ± -
	1 PLC ± -
	2 PLC ± -
	3 PLC ± 0.127 [.005]
	4 PLC ± - ± 1°
MATERIAL	FINISH
4	5

DWN KIRAN HOLAL 16NOV12
CHK ROHDE DANIEL 16NOV12
APVD ROHDE DANIEL 16NOV12
PRODUCT SPEC
APPLICATION SPEC
114-2162
WEIGHT
-

TE Connectivity			
NAME			
TERMINAL, RING TONGUE, PIDG, STRATO-THERM, WIRE SIZE: 18-16 AWG, 45 DEG BEND			
SIZE	CAGE CODE	DRAWING NO	RESTRICTED TO
A3	B	C-341240	-
CUSTOMER DRAWING		SCALE 8:1	SHEET 1 OF 1 REV B1