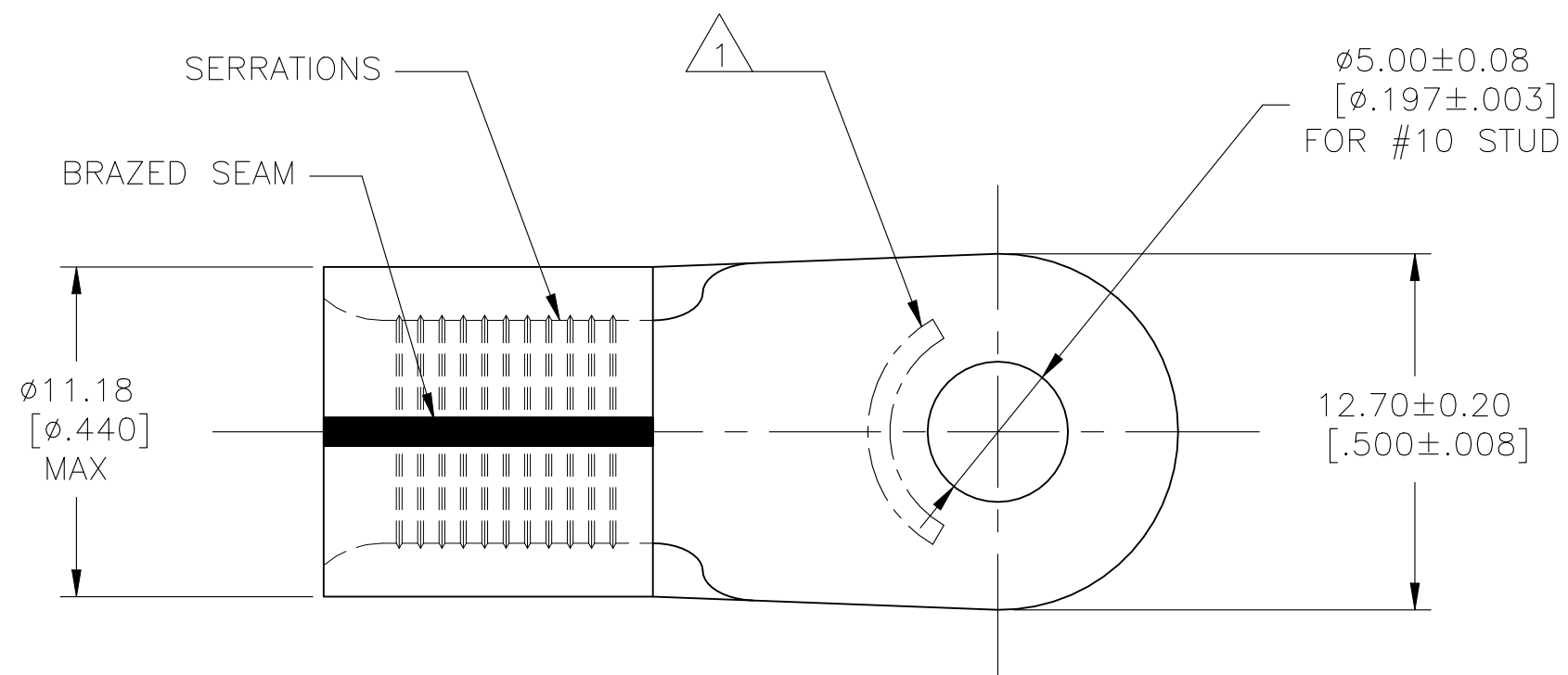


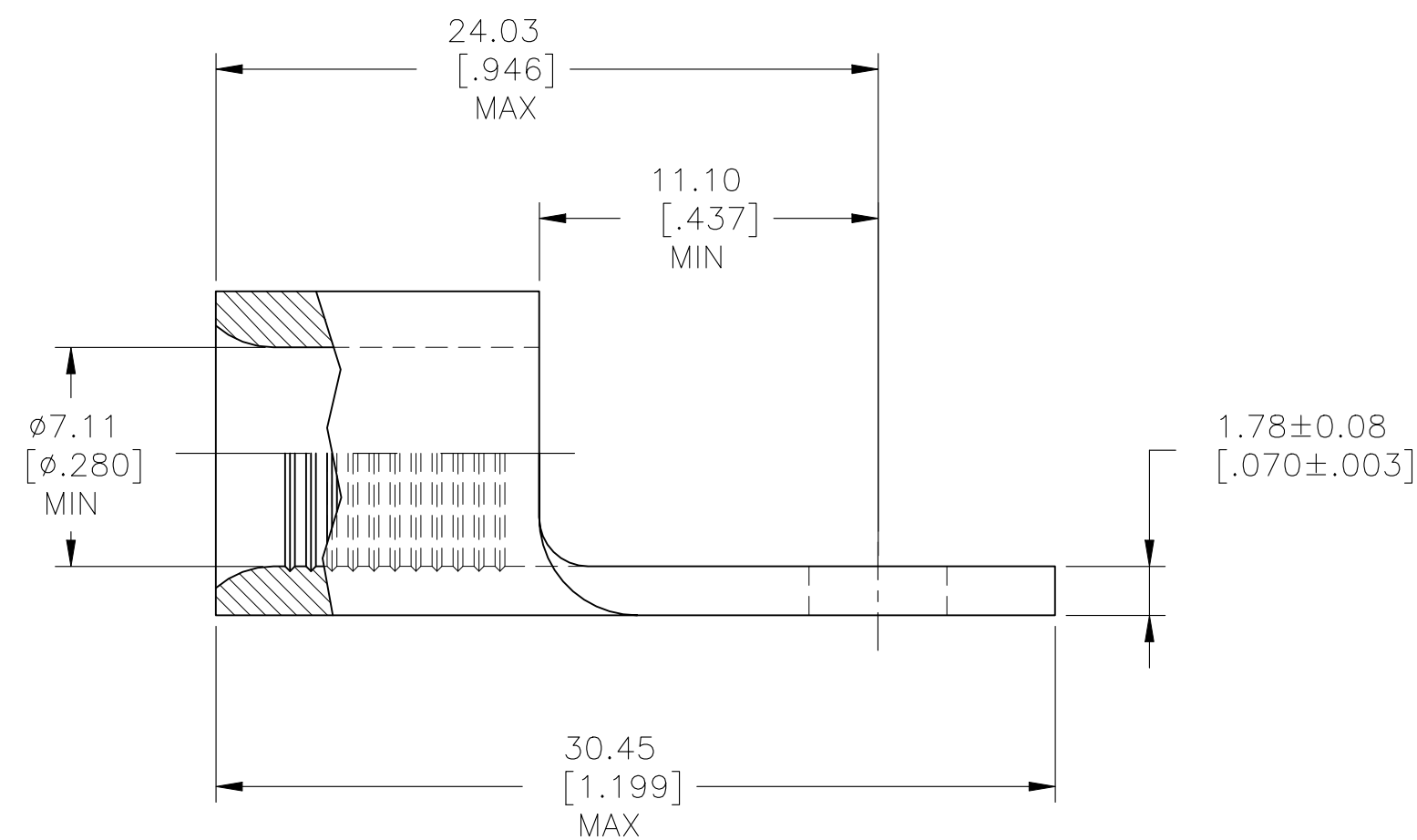
REVISIONS					
P	LTR	DESCRIPTION	DATE	DWN	APVD
F2		REVISED PER ECN-22-150900	22APR2022	RK	CSD



AMP WIRE RANGE	E13288 Listed
4 AWG SOLID OR STRANDED	4 AWG STRANDED P/N'S 33114 & 2-33114-1 ONLY

LR7189 Certified
4 AWG SOLID OR STRANDED P/N'S 33114 & 2-33114-1 ONLY

- △ 1 STAMP AMP 4W* APPROX AS SHOWN.
- △ 2 TIN PLATE 0.00254[.000100] MIN THK PER ASTM B545.
- △ 3 NICKEL PLATE 0.00762[.000300] MIN THK PER SAE AMS QQ-N-290.



OBSOLETE	322	LOOSE PIECE, TRAY	△ 2	170°C[338°F] MAX	2-33114-1
PRELIMINARY	100	LOOSE PIECE	△ 3	343°C[650°F] MAX	33114-1
	100	LOOSE PIECE	△ 2	170°C[338°F] MAX	33114
	QTY	PACKAGE TYPE	FINISH	MAX OPERATING TEMPERATURE	PART NUMBER

AMP INCORPORATED CUSTOMER SERVICE SYSTEMS		MAX RECOMMENDED OPERATING TEMPERATURE: SEE TABLE
FOR ADDITIONAL PRODUCT INFORMATION OR COPIES OF DRAWINGS AND TECHNICAL DOCUMENTS	PRODUCT INFORMATION CENTER 1-800-522-6752	VOLTAGE RATING: NOT APPLICABLE
FOR APPLICATION TOOLING INFORMATION	TOOLING ASSISTANCE CENTER 1-800-722-1111	WIRE CROSS SECTIONAL AREA RANGE: 16.8-26.7mm ² [33,100-52,600] CIR MILS SOLID OR STRANDED
FOR ORDER ENTRY	1-800-526-5142	THIS DRAWING IS A CONTROLLED DOCUMENT FOR AMP INCORPORATED. IT IS SUBJECT TO CHANGE AND THE CONTROLLING ENGINEERING ORGANIZATION SHOULD BE CONTACTED FOR THE LATEST REVISION.

THIS DRAWING IS A CONTROLLED DOCUMENT.		DWN TA BRINKMAN 3-29-93	TE Connectivity		
DIMENSIONS: mm [INCHES]		CHK DA PATTERSON 3-29-93			
TOLERANCES UNLESS OTHERWISE SPECIFIED:		APVD DE MILLER 3-29-93	NAME TERMINAL, RING TONGUE, SOLISTRAND™		
0 PLC ± - 1 PLC ± - 2 PLC ± 0.20[.008] 3 PLC ± - 4 PLC ± - ANGLES ± -		PRODUCT SPEC -	SIZE A2		
MATERIAL COPPER PER ASTM B-152 ANNEALED		FINISH SEE TABLE	APPLICATION SPEC -	CAGE CODE 00779	DRAWING NO C-33114
		WEIGHT -	RESTRICTED TO -	SCALE 4:1	SHEET 1 OF 1
		CUSTOMER DRAWING	REV F2		