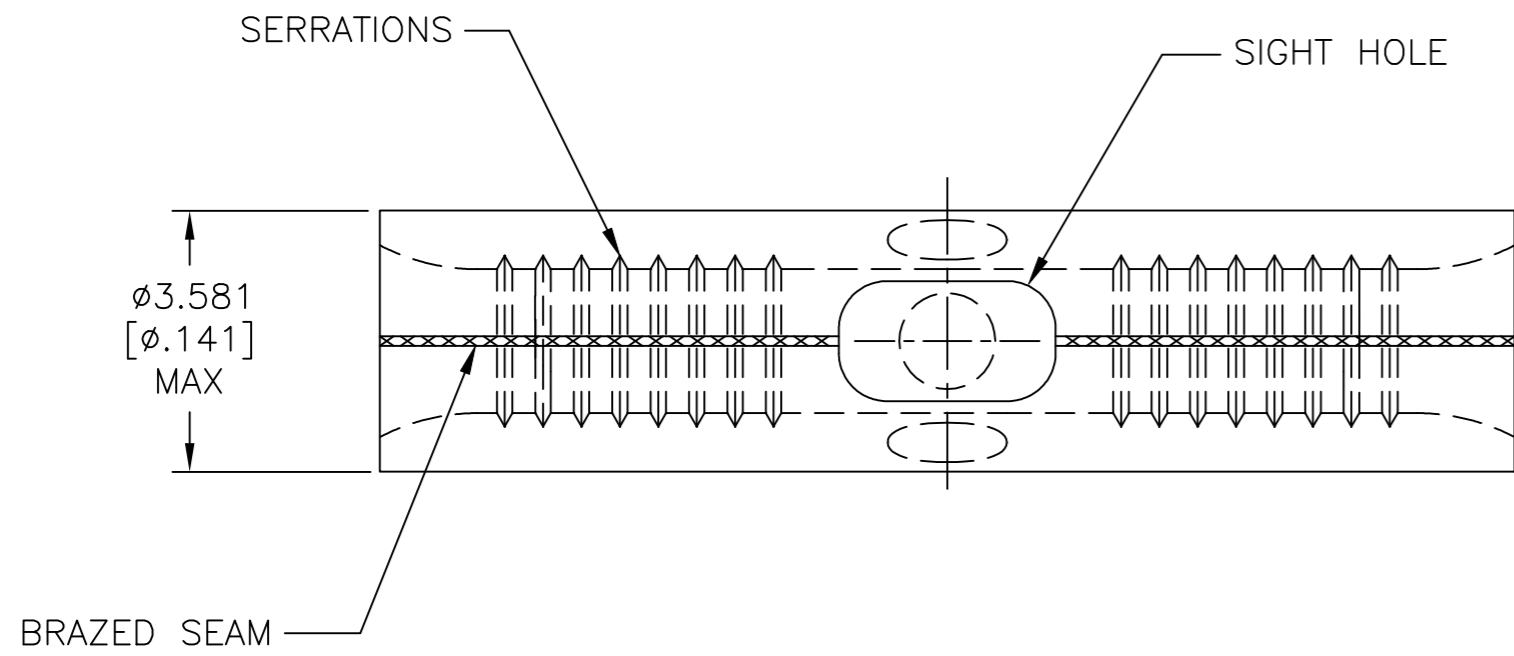
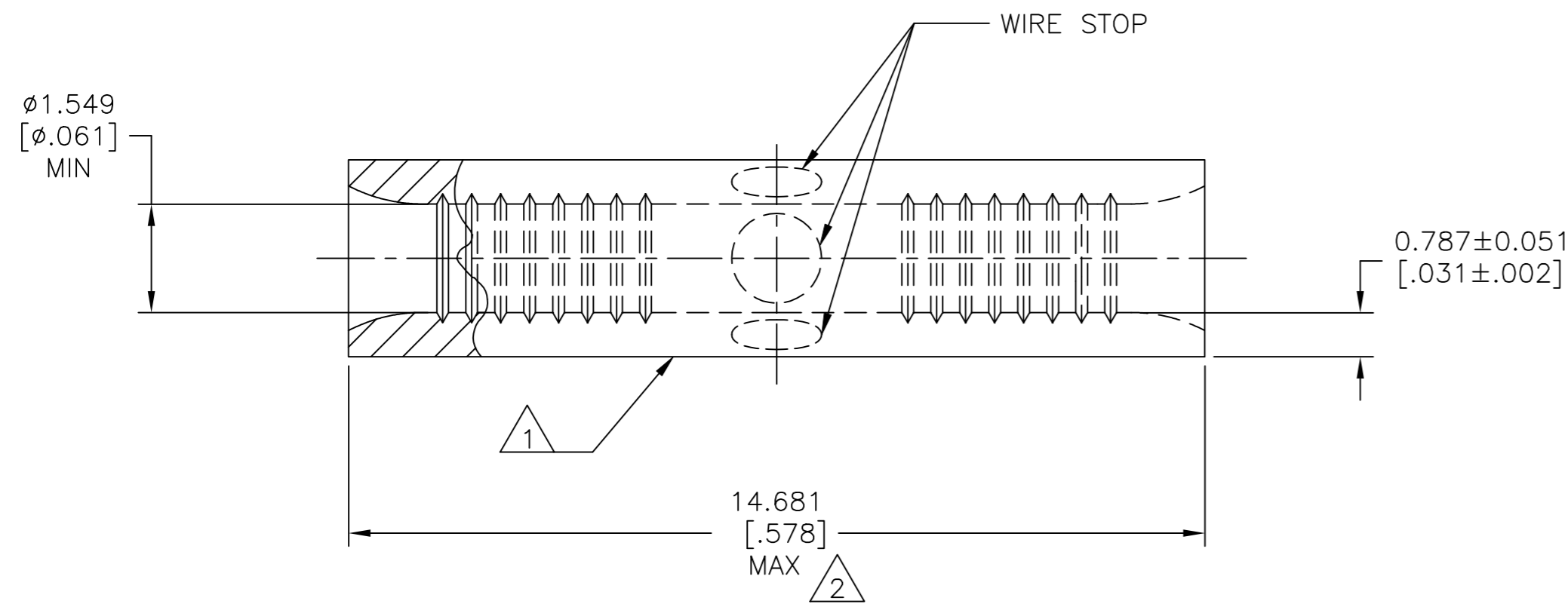


THIS DRAWING IS UNPUBLISHED. RELEASED FOR PUBLICATION
 © COPYRIGHT - By - ALL RIGHTS RESERVED.

| REVISIONS | | | | | |
|-----------|-----|---------------------------|-----------|-----|------|
| P | LTR | DESCRIPTION | DATE | DWN | APVD |
| D3 | | REVISED PER ECR-16-014072 | 24OCT2016 | RS | DR |
| D4 | | REVISED PER ECO-17-008808 | 01MAR2018 | RS | DR |



| | |
|--------------------------------|--------------------------------|
| AMP WIRE RANGE | E13288 Listed |
| 22-16 AWG SOLID OR STRANDED | 22-16 AWG SOLID OR STRANDED |
| LR7189 Certified | MILITARY P/N AND CLASS |
| 22-16 AWG SOLID OR STRANDED | NOT APPLICABLE |



- 1 STAMP AMP 22-18* APPROX AS SHOWN
22-16 SPLICES ARE STAMPED 22-18 IN
ACCORDANCE WITH MILITARY SPEC SAE AS7928
COMMERCIAL WIRE RANGE IS 22-16.
- 2 MAXIMUM LENGTH DOES NOT INCLUDE
MANUFACTURING TABS.

| | | |
|------|--------------|-------------|
| 2500 | TAPE&REEL | 330367-2 |
| 1000 | LOOSE PIECE | 330367 |
| QTY. | PACKAGE TYPE | PART NUMBER |

| AMP INCORPORATED CUSTOMER SERVICE SYSTEMS | | |
|---|--|---|
| FOR ADDITIONAL PRODUCT INFORMATION OR COPIES OF DRAWINGS AND TECHNICAL DOCUMENTS | PRODUCT INFORMATION CENTER 1-800-522-6752 | MAX RECOMMENDED OPERATING TEMPERATURE: 170°C [338°F] MAX |
| FOR APPLICATION TOOLING INFORMATION | TOOLING ASSISTANCE CENTER 1-800-722-1111 | VOLTAGE RATING: NOT APPLICABLE |
| FOR ORDER ENTRY | 1-800-526-5142 | WIRE CROSS SECTIONAL AREA RANGE, 0.26-1.65mm²[509-3,260] CIR MILS SOLID OR STRANDED |

| | | | | | |
|---|--|--|--|--------------------|------------------------|
| THIS DRAWING IS A CONTROLLED DOCUMENT. | | DWN NAGALAKSHMI K 28JUN2016 | TE Connectivity Ltd. | | |
| DIMENSIONS: mm [INCHES] | | CHK ROHDE DANIEL F 28JUN2016 | | | |
| TOLERANCES UNLESS OTHERWISE SPECIFIED: | | APVD ROHDE DANIEL F 28JUN2016 | NAME SPLICE, BUTT, W/ SIGHT HOLE, SOLISTRAND™ 22-16 AWG | | |
| 0 PLC ± - 1 PLC ± - 2 PLC ± - 3 PLC ± 0.127[.005] 4 PLC ± - ANGLES ± - | | PRODUCT SPEC UL 486 A-B | SIZE A2 | CAGE CODE 00779 | DRAWING NO C=330367 |
| MATERIAL COPPER PER ASTM B-152 ANNEALED | | FINISH TIN PLATE 0.00254[0.00100] MIN THK PER ASTM B545 | WEIGHT | RESTRICTED TO | SCALE 10:1 |
| CUSTOMER DRAWING | | | SHEET 1 of 1 | REV D4 | |