

## REVISIONS

P	LTR	DESCRIPTION	DATE	DWN	APVD
	C	PRODUCTION ISSUE	29JAN2019	PNT	MT

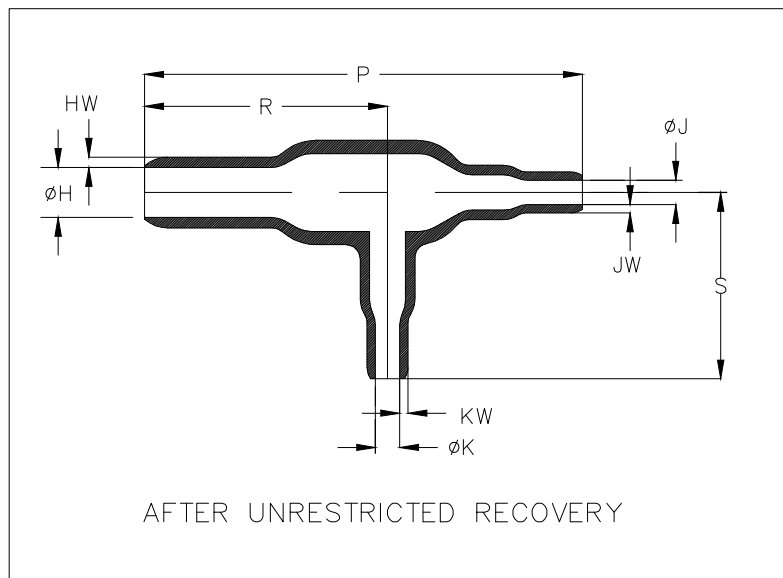
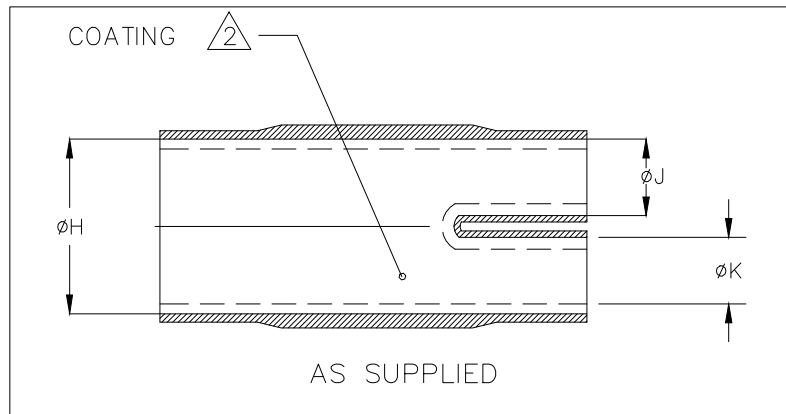


TABLE OF DIMENSIONS


PART NUMBER	H		J & K		P	R	S	T	U	HW	JW & KW
	Min	Max	Min	Max	$\pm 10\%$	$\pm 10\%$	$\pm 10\%$	$\pm 10\%$	$\pm 10\%$	$\pm 20\%$	$\pm 20\%$
	a	b	a	b	b	b	b	b	b	b	b
322A012-25/225	<u>13.2</u> [.52]	<u>7.4</u> [.29]	<u>6.6</u> [.26]	<u>3.8</u> [.15]	<u>55.9</u> [2.20]	<u>33.0</u> [1.30]	<u>19.3</u> [.76]	<u>39.9</u> [1.57]	<u>21.6</u> [.85]	<u>1.02</u> [.06]	<u>1.02</u> [.04]
322A024-25/225	<u>26.9</u> [1.06]	<u>13.2</u> [.52]	<u>13.2</u> [.52]	<u>6.6</u> [.26]	<u>97.0</u> [3.82]	<u>53.8</u> [2.12]	<u>38.6</u> [1.52]	<u>65.8</u> [2.59]	<u>36.3</u> [1.43]	<u>2.54</u> [.10]	<u>1.52</u> [.06]
322A037-25/225	<u>55.6</u> [2.19]	<u>27.2</u> [1.07]	<u>26.9</u> [1.06]	<u>13.2</u> [.52]	<u>198.1</u> [7.80]	<u>111.3</u> [4.38]	<u>77.7</u> [3.06]	<u>130.6</u> [5.14]	<u>73.9</u> [2.91]	<u>4.57</u> [.18]	<u>2.54</u> [.10]

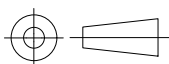
THIS DRAWING IS UNPUBLISHED.

RELEASED FOR PUBLICATION

ALL RIGHTS RESERVED.

© COPYRIGHT - TE Connectivity Ltd.

DIMENSIONS: mm [INCHES]	DWN	29JAN2019	MATERIAL	SEE SHEET 2		FINISH	-	
	CHK	29JAN2019	 TE Connectivity Ltd.					
TOLERANCES UNLESS OTHERWISE SPECIFIED:	APVD	29JAN2019						
0 PLC $\pm -$ 1 PLC $\pm 0.50[.1]$ 2 PLC $\pm 0.25[.01]$ 3 PLC $\pm 0.13[.005]$ 4 PLC $\pm -$ ANGLES $\pm .1$	PRODUCT SPEC	-						
	APPLICATION SPEC	-	SIZE	CAGE CODE	DRAWING NO	RESTRICTED TO		
	WEIGHT	-	A4	00779	C-	322A012-25/225-0THRU037-25/225-0		
CUSTOMER DRAWING			SCALE	DNS		SHEET	1 OF 2	
							REV C	




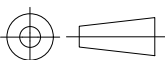
P	LTR	DESCRIPTION	DATE	DWN	APVD
	—	SEE SHEET 1	—	—	—

COMPATABILITY CHART				
MATERIAL DASH NO.	MATERIAL DESCRIPTION	RT SPEC	COATING SLASH NO.	COATING S NO.
-25	Elastomer, Fluid Resistant	RW-2070	/42; /86; /225	S1017; S1048; S1206

Diagram illustrating the structure of a 10-character part number:

- Base part number: 322A0XX
- Material dash number (See Compatibility Chart): XX
- Modification number: XX
- Adhesive slash number (If necessary, see Compatibility Chart): /XX
- Color designator: -0

1. Dimensions appearing in table are as follows:
  - a - As Supplied
  - b - After Unrestricted Recovery
2. Coating is optional. As supplied dimensions appearing in table are for uncoated parts. When coating is added, entry diameters will be reduced by 1.5mm[.06"] max.

DIMENSIONS: mm [INCHES]		DWN PRAVEEN N T 29JAN2019	MATERIAL —		FINISH —	
TOLERANCES UNLESS OTHERWISE SPECIFIED:  0 PLC ± — 1 PLC ± 0.50[.1] 2 PLC ± 0.25[.01] 3 PLC ± 0.13[.005] 4 PLC ± — ANGLES ± .1		CHK N NAGAR 29JAN2019	<div>TE Connectivity Ltd.</div>			
		APVD M TAYLOR 29JAN2019				
		PRODUCT SPEC —	NAME  TRANSITION, 90 DEGREE SIDE BREAKOUT			
		APPLICATION SPEC —				
		WEIGHT	SIZE A4	CAGE CODE 00779	DRAWING NO C 322A012-25/225-0THRU037-25/225-0	RESTRICTED TO —
		CUSTOMER DRAWING				SCALE DNS