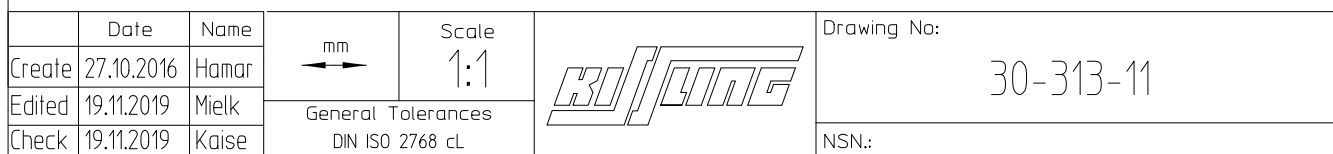
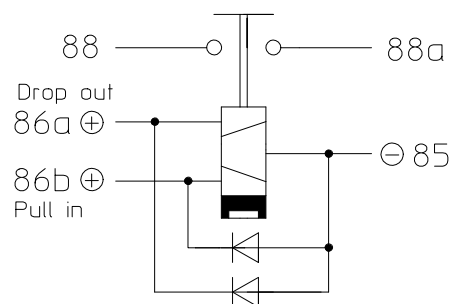


CIRCUIT



Technical Data

Bi-stable relays of the series 30 are equipped with 2 coils and magnetical latching. The relay will pick up (make) by an impulse to the pull-in coil. Without current the make position will be held by a permanent magnet. The relay will open (break) through an impulse to the drop-out coil. Break position is also supported by the permanent magnet.

ENVIRONMENTAL CHARACTERISTICS	
TEMPERATURE RANGE	-40°C TO +85°C (-40°F TO +185°F)
MAX. ALTITUDE RATING	50 000 FT
SEAL	IEC 529, 2.EDITION 1989-IP67 (6FT/1 MIN) AND IP6K9K
SHOCK G-LEVEL	6G/ 11 MSEC
VIBRATION	4G/ 50-2000 Hz

ELECTRICAL CHARACTERISTICS	
MIN. INSULATION RESISTANCE INITIAL	100 MEGOHMS
AFTER LIVE OR ENVIRONMENTAL	50 MEGOHMS
DIELECTRIC WITHSTANDING VOLTAGE	SEA-LEVEL 1MINUTE 1050 VAC
	ALTITUDE 1MINUTE 500 VAC
MAX. CONTACT DROP, INITIAL	0,15 VDC
AFTER LIFE TEST	0,175 VDC
OVERLOAD	2400 AMP FOR 1 SEC, 600 AMP FOR 20 SEC
DUTY RATING	300 AMP CONTINUOUS

RATED CONTACT LOAD (12 VDC)	
RESISTIVE LOAD	50 000 CYCLES
MECHANICAL LIFE	100 000 CYCLES


OPERATING CHARACTERISTICS	
COIL DATA	
VOLTAGE RANGE	9-16 VDC
NOMINAL VOLTAGE	12 VDC
PICK UP VOLTAGE MIN.	9 VDC
DROP OUT VOLTAGE MIN.	7 VDC
RESISTANCE PULL IN COIL	2,1 OHM ±20%
PULL IN CURRENT APPROX.	5,7 AMP
RESISTANCE DROP OUT COIL	2,6 OHM ±20%
DROP OUT CURRENT APPROX.	4,6 AMP APPROX
PICK UP IMPULSE TIME	50 MSEC APPROX. (CONTINUOUS IMPULSE MAX. 1 MIN)
DROP OUT IMPULSE TIME	50 MSEC APPROX. (CONTINUOUS IMPULSE MAX. 1 MIN)

TIME-MILLISECONDS-MAX	
PICK UP	MAX. 15
BOUNCE	MAX. 5
DROP OUT	MAX. 10

WEIGHT	0,550 KG = 1.213 POUND MAX.
WIRE SECTION (AT NOMINAL LOAD)	MIN. 95mm²/ 0.147 sq. in./ AWG 0000
MOUNTING POSITION	OPTIONAL

SUBJECT TO CHANGE

For this drawing we reserve the copyright in accordance with DIN ISO 16016

	Date	Name	<div>mm</div>	Scale		Drawing No:	
Create	27.10.2016	Hamar		1:1		30-313-11	
Edited	19.11.2019	Mielk	General Tolerances DIN ISO 2768 cL				NSN.:
Check	19.11.2019	Kaise					