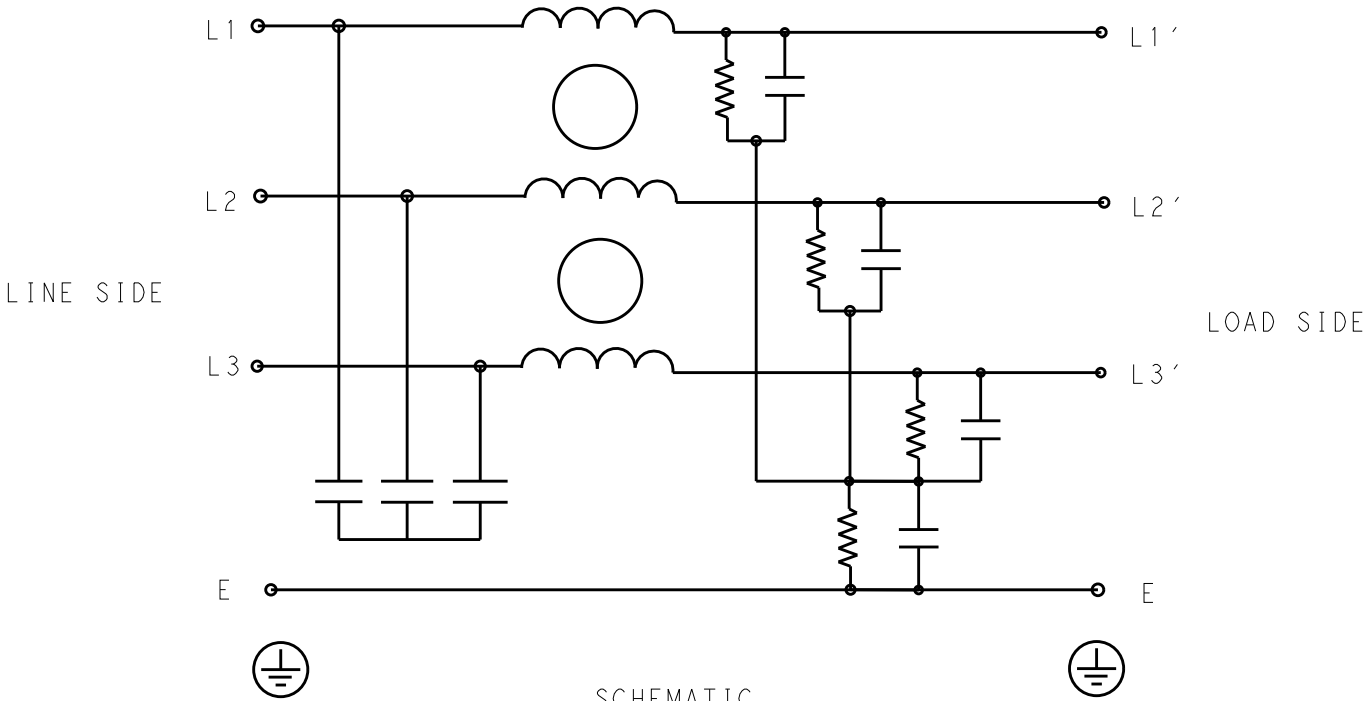
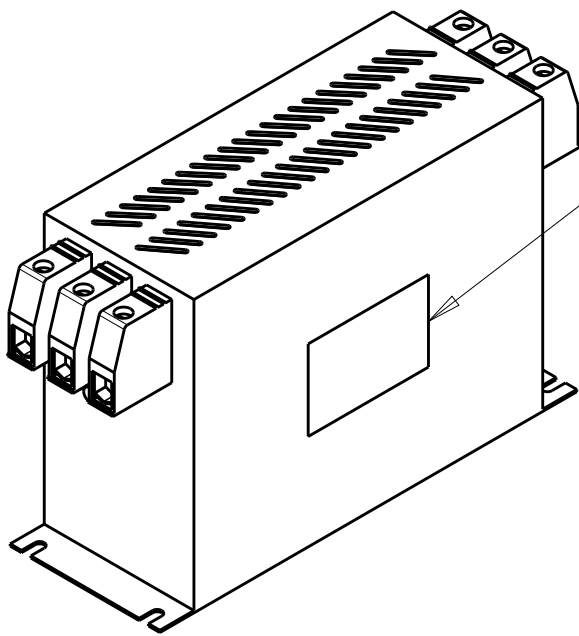


P	LTR	DESCRIPTION	DATE	DWN	APVD
	B	INITIAL RELEASE	07JUL2020	SB	LI



TYPICAL INSERTION LOSS  
COMMON MODE 50/50Ω; DIFFERENTIAL MODE 50/50Ω

MHz	0.01	0.05	0.15	0.5	1	3	5	10	30
CM	20	20	31	65	40	28	24	19	11
DM	31	30	34	48	39	28	23	17	15



LABEL TO TE  
MARKING SPECIFICATION

SAFETY ORGANIZATIONS

THIS FILTER WILL BE FORMALLY RECOGNIZED, CERTIFIED OR APPROVED BY THE LISTED AGENCY. THEREFORE, ALL TEST/REQUIREMENTS SPECIFIED IN THE LATEST REVISION OF THE FOLLOWING AGENCY STANDARDS WILL BE MET:

UL RECOGNIZED\* 150A 440V 50Hz/60Hz 40°C  
CSA CERTIFIED\*\* 150A 440V 50Hz/60Hz 40°C

\*31 JULY 2020 ; \*\*31 AUGUST 2020

OPERATING SPECIFICATION

LINE CURRENT/VOLTAGE: 150A, 440VAC  
LINE FREQUENCY: 50/60Hz

MAXIMUM LEAKAGE CURRENT: 10mA @ 230VAC, 50Hz

OPERATING AMBIENT TEMPERATURE RANGE @ RATED CURRENT: -25°C TO +40°C

IN AN AMBIENT, T<sub>a</sub>, HIGHER THAN 40°C, THE MAXIMUM OPERATING CURRENT, I<sub>o</sub>, IS AS FOLLOWS:

$$I_o = I_r \sqrt{\frac{85 - T_a}{45}}$$

RELIABILITY SPECIFICATIONS

STORAGE TEMPERATURE: -40°C TO +85°C  
HUMIDITY: 21 DAYS @ 40°C AND 95% RH

TEST SPECIFICATIONS

INDUCTANCE, NOMINAL: 0.1mH

CAPACITANCE @ 1kHz

LINE TO GROUND, NOMINAL: 0.88μF  
LINE TO LINE, NOMINAL: 4.4μF

DISCHARGE RESISTOR


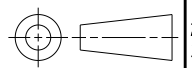
L/G I.R. 680kΩ 2W  
L/L I.R. 3MΩ 2W  
L/N I.R. XXX  
N/G I.R. XXX  
IR (NO DISCHARGE RESISTOR) 20°C, 50% RH AND 100VDC, MIN: 6MΩ

RECOMMENDED RECEIVING INSPECITON HIPOT

LINE TO GROUND FOR 1 MINUTE: 2632VDC  
LINE TO LINE FOR 1 MINUTE: 1892VDC

FILTER APPROVAL

THE BEST WAY TO SELECT AND QUALIFY A FILTER IS FOR YOUR ENGINEERING TO TEST THE UNIT IN YOUR EQUIPMENT.

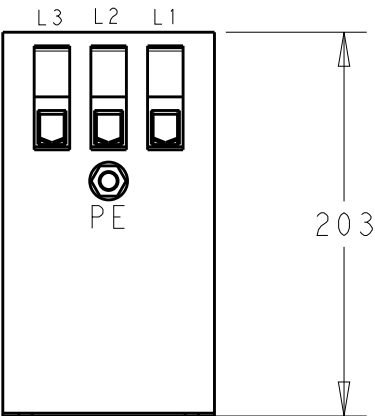
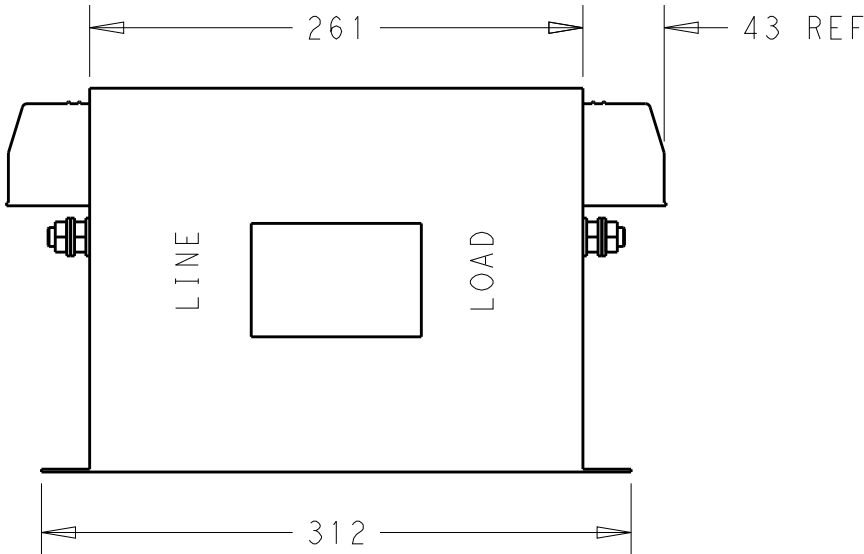
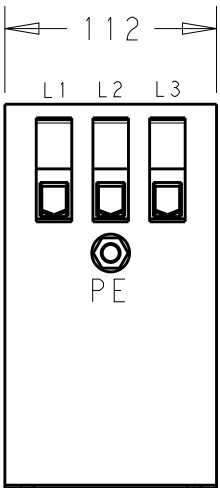
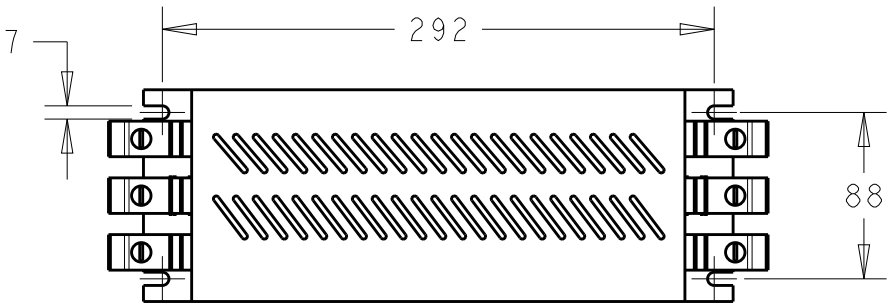
THIS DRAWING IS A CONTROLLED DOCUMENT.		DWN 02MAR2020 SHRIC HARANA B	 TE Connectivity		
DIMENSIONS: mm		CHK 02MAR2020 LEO IRUDHAYARAJ			
		APVD 02MAR2020 LEO IRUDHAYARAJ			
TOLERANCES UNLESS OTHERWISE SPECIFIED:		PRODUCT SPEC			
0 PLC ±0.5 1 PLC ±0.4 2 PLC ±0.4 3 PLC ±0.130 4 PLC ±0.0500 ANGLES ±0.5		APPLICATION SPEC	NAME POWER LINE FILTER 150KEMS10ABSD		
MATERIAL		WEIGHT	SIZE	CAGE CODE	DRAWING NO
-		-	A3	00779	C-3-1609967-7
FINISH		CUSTOMER DRAWING	SCALE	SHEET	REV
-			1:4	1 OF 2	B


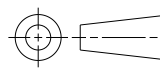
© 2020 TE Connectivity. All Rights Reserved.

NOTE 1 GROUND CONNECTION:  
DO NOT LOOSEN INNER GROUND NUTS.  
TORQUE OUTER TERMINAL SCREWS: 6 Nm / 54 in.lbs  
TORQUE GROUND NUTS: 4-10Nm

NOTE 2 INPUT OUTPUT CONNECTION TERMINAL  
AWG SIZE: 6-1 AWG  
WIRE SECTION: 50 mm<sup>2</sup>  
THREADED BOLT SIZE FOR GROUND: M10

REVISIONS					
P	LTR	DESCRIPTION	DATE	DWN	APVD
		SEE SHEET 1			



THIS DRAWING IS A CONTROLLED DOCUMENT.		DWN 02MAR2020 SHRICHARANA B	 TE Connectivity		
DIMENSIONS: mm		CHK 02MAR2020 LEO IRUDHAYARAJ			
		APVD 02MAR2020 LEO IRUDHAYARAJ			
		PRODUCT SPEC			
TOLERANCES UNLESS OTHERWISE SPECIFIED:	0 PLC ±0.5 1 PLC ±0.5 2 PLC ±0.40 3 PLC ±0.130 4 PLC ±0.0500 ANGLES ±0.5	APPLICATION SPEC	NAME POWER LINE FILTER 150KEMS10ABSD		
		WEIGHT	SIZE A3	CAGE CODE 00779	RESTRICTED TO -
MATERIAL	FINISH	CUSTOMER DRAWING	SCALE 1:4	DRAWING NO C-3-1609967-7	REV B