

APPROVED BY: *C. Westrich* DATE: 4-30-92 REV: 6

SAFETY ORGANIZATION(S).
 THIS FILTER HAS BEEN FORMALLY RECOGNIZED, CERTIFIED OR APPROVED BY THE LISTED AGENCY. THEREFORE, ALL TEST/REQUIREMENTS SPECIFIED IN THE LATEST REVISION OF THE FOLLOWING AGENCY STANDARDS HAVE BEEN MET.

UL 1283
 CSA 22.2, NO. 0.0.4.8
 VDE 565-3, 625
 SEN 432901
 SEV 1055/TP1977/5.1.1

OPERATING SPECIFICATIONS.
 LINE VOLTAGE/CURRENT:

2 AMP., 120/250 VAC
 2 AMP./40°C, 250 VAC
 50-60HZ
 .25mA @ 120V 50HZ
 .40mA @ 250V 50HZ
 -10°C TO +40°C @ RATED CURRENT, I_r

IN AN AMBIENT, I_a, HIGHER THAN 40°C. THE MAXIMUM OPERATING CURRENT, I_o, IS AS FOLLOWS:

$$I_o = I_r \sqrt{\frac{85-I_a}{45}}$$

RELIABILITY SPECIFICATIONS.

STORAGE TEMPERATURE:
 -25°C TO +85°C
 HUMIDITY:
 21 DAYS @ 40°C 95% RH
 CURRENT OVERLOAD TEST:
 6 TIMES RATED CURRENT FOR 8 SECONDS

TEST SPECIFICATIONS.

INDUCTANCE:
 .75mH NOMINAL
 CAPACITANCE: (MEASURED @ 1 KHz, 0.25 VAC MAX., 25°C ±1°C)
 .0028µF ±20%
 LINE TO GROUND:
 .047µF ±20%
 DISCHARGE RESISTOR:
 1.5 MΩ
 LINE/GROUND AND LINE/LINE
 INSULATION RESISTANCE
 (W/O DISCHARGE RESISTOR)
 6000 MΩ (MIN) AT 100 VDC
 20°C AND 50% RH

RECOMMENDED RECEIVING INSPECTION HIPOTL.

LINES TO GROUND,
 LINE TO LINE,
 2250 VDC FOR 1 MINUTE
 1450 VDC FOR 1 MINUTE

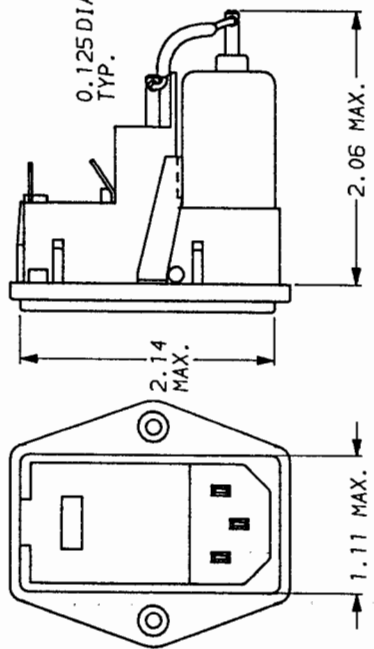
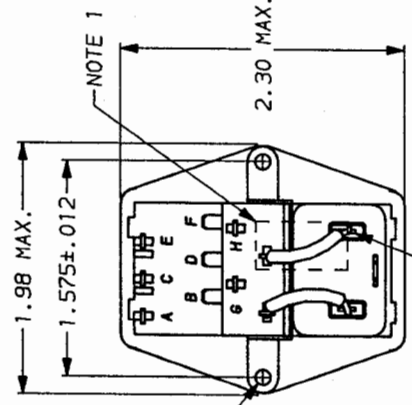
FILTER APPROVAL.
 THE BEST WAY TO SELECT AND QUALIFY A FILTER IS FOR YOUR ENGINEERING TO TEST THE UNIT IN YOUR EQUIPMENT.

TOLERANCE EXCEPT AS NOTED

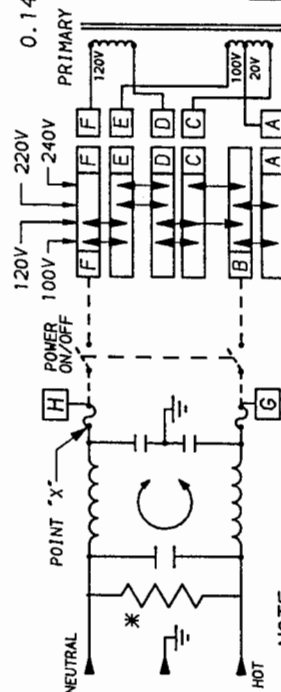
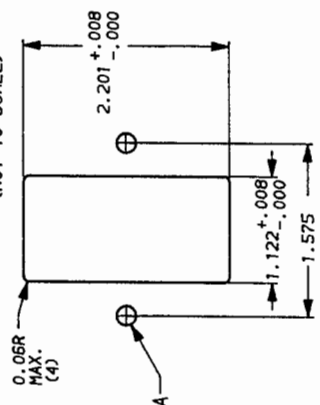
DECIMAL: .XXX .XX .X ANGLES
 ENGLISH: ±.025 ±.1
 METRIC: ±

MATERIAL: AS SUPPLIED

FINISH:



RECOMMENDED PANEL CUTOUT
 (NOT TO SCALE)



- NOTE:**
- 1.) PROVISION FOR DUAL EUROPEAN STYLE FUSING 2EDL4M ONLY.
 - 2.) 2EDL4 CONNECT JUMPER OR SWITCH FROM POINT X TO F AND FROM G TO B.

*RESISTOR ADDED TO PRODUCT BUILT AFTER 3-30-92 (9212).

FREQUENCY MHz	50	10	3.0	5.0	10	30
COMMON	.05	.15	.50	1.0	3.0	5.0
dB	6	14	20	24	35	40
DIFF. dB	—	7	16	21	23	37
						47
						50

This document is proprietary to CORCOM INC. and is not to be reproduced nor used for manufacturing purposes except on CORCOM's order or prior written consent.

corcom
 LIBERTYVILLE, IL 60048

POWER LINE FILTER

SCALE: DATE: 3-12-87
 DRG. NO.: 2EDL4 & 2EDL4M
 REV: 6
 DESIGNED BY: LJD
 CHECKED BY: CFW