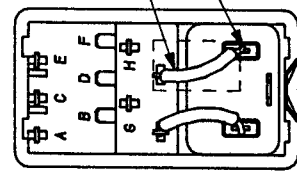
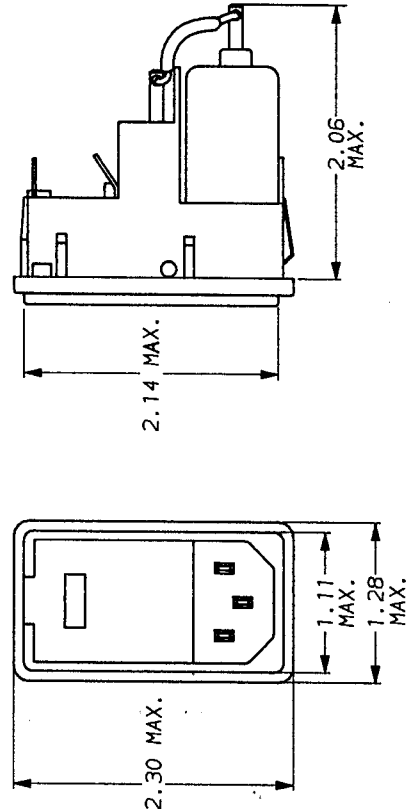
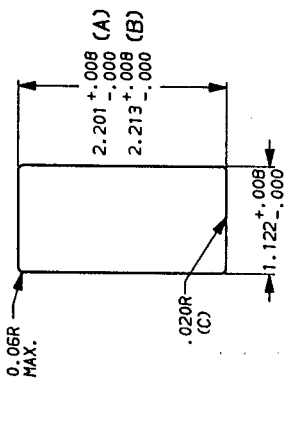


RECOMMENDED PANEL CUTOUT
(NOT TO SCALE)

NOTES:
(A) FOR PANEL TH'K. OF .031 --.079
(B) FOR PANEL TH'K. OF .083 --.126
(C) FOR SNAP-IN APPLICATION, THE SIDES OF THE CUTOUT MUST HAVE A .020R. ON THE INSTALLATION SIDE.



NOTE: ALL BACKPLATE TERMINALS ARE .110 FASTONS.

SAFETY ORGANIZATION(S)
THIS FILTER HAS BEEN FORMALLY RECOGNIZED, CERTIFIED OR APPROVED BY THE LISTED AGENCY. THEREFORE, ALL TEST/REQUIREMENTS SPECIFIED IN THE LATEST REVISION OF THE FOLLOWING AGENCY STANDARDS HAVE BEEN MET.

- UL RECOGNIZED UL 1283
- CSA CERTIFIED CSA 22.2, NO.0.0.4, 8
- VDE APPROVED VDE 565-3, 625
- SEMKO APPROVED SEN 432901
- SEV APPROVED SEV 1055/TP1977/5.1.1

OPERATING SPECIFICATIONS:

- LINE VOLTAGE/CURRENT: 2 AMP., 120/250 VAC; 2 AMP./40°C, 250 VAC
- LINE FREQUENCY: 50-60Hz
- MAX. LEAKAGE CURRENT, EACH: .25mA @ 120V 60Hz
- LINE TO GROUND: .40mA @ 250V 50Hz
- OPERATING AMBIENT TEMP. RANGE: -10°C TO +40°C @ RATED CURRENT, I_r
- IN AN AMBIENT, T_a, HIGHER THAN 40°C, THE MAXIMUM OPERATING CURRENT, I_o, IS AS FOLLOWS:
 $I_o = I_r \sqrt{\frac{85-T_a}{45}}$

RELIABILITY SPECIFICATIONS:

- STORAGE TEMPERATURE: -25°C TO +85°C
- HUMIDITY: 21 DAYS @ 40°C 95% RH
- CURRENT OVERLOAD TEST: 6 TIMES RATED CURRENT FOR 8 SECONDS

TEST SPECIFICATIONS:

- INDUCTANCE: .79mH NOMINAL
- CAPACITANCE, (MEASURED @ 1 KHz, 0.25 VAC MAX., 25°C ±1°C): .0028µF ±20%
- LINE TO GROUND: .047µF ±20%
- LINE TO LINE: 1.5 MΩ
- DISCHARGE RESISTOR: 6000 MΩ (MIN) AT 100 VDC
- INSULATION RESISTANCE: 200°C AND 50% RH
- (H/O DISCHARGE RESISTOR)

RECOMMENDED RECEIVING INSPECTION HIPOUT.

- 2250 VDC FOR 1 MINUTE
- 1450 VDC FOR 1 MINUTE
- FILTER APPROVAL: THE BEST WAY TO SELECT AND QUALIFY A FILTER IS FOR YOUR ENGINEERING TO TEST THE UNIT IN YOUR EQUIPMENT.

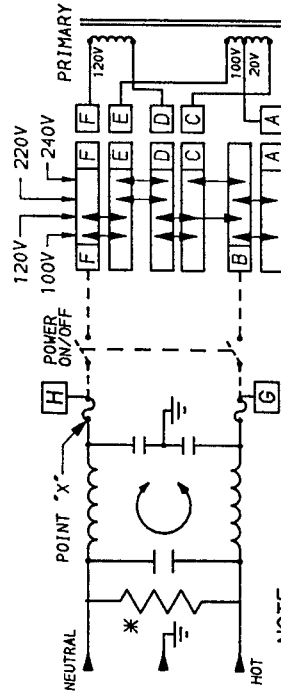
TOLERANCE EXCEPT AS NOTED

DECIMAL: .XXX .XX .X ANGLES ENGLISH: ±.025 METRIC: ±.1

50Ω - 50Ω (MINIMUM) INSERTION LOSS

FREQUENCY MHz	.05	.15	.50	1.0	3.0	5.0	10	30
COMMON dB	6	14	20	24	35	40	45	50
DIFF. dB	—	7	16	21	23	37	47	50

This document is proprietary to CORCOM INC. and is not to be reproduced nor used for manufacturing purposes except on CORCOM's order or prior written consent.



- NOTE:
1.) PROVISION FOR DUAL EUROPEAN STYLE FUSING 2EDL4CM ONLY.
2.) 2EDL4C CONNECT JUMPER OR SWITCH FROM POINT X TO F AND FROM G TO B.



POWER LINE FILTER

SCALE	DATE	DRG. NO.	REV.
NTS	3-4-87	2EDL4C & 2EDL4CH	7
DRW. BY	LJD	CFM	