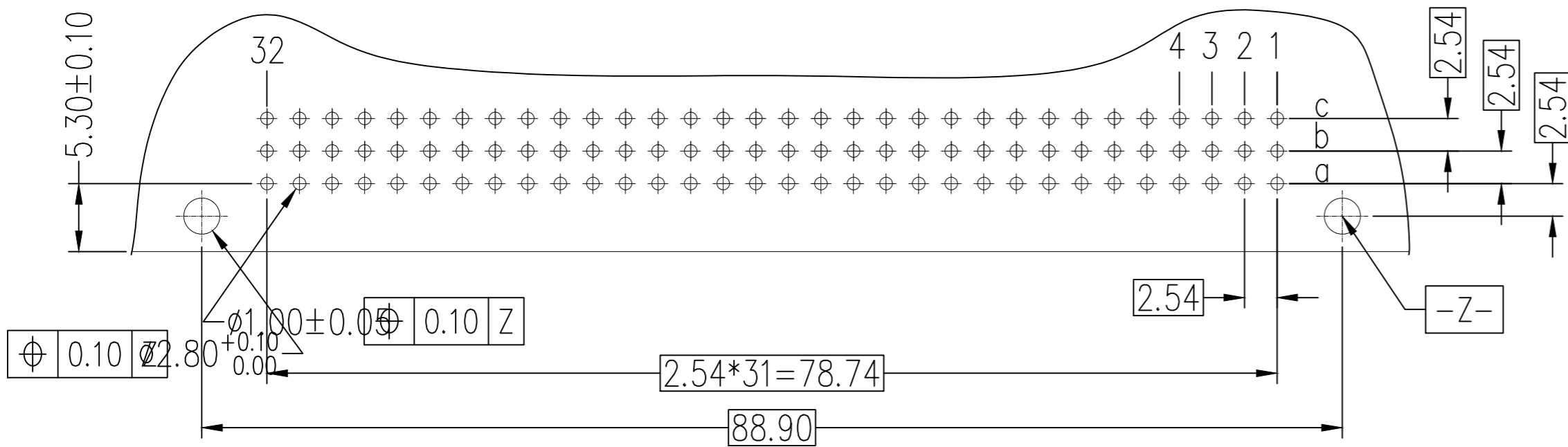
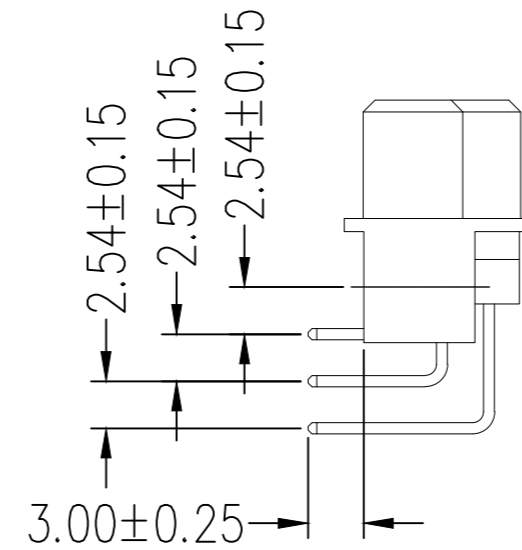
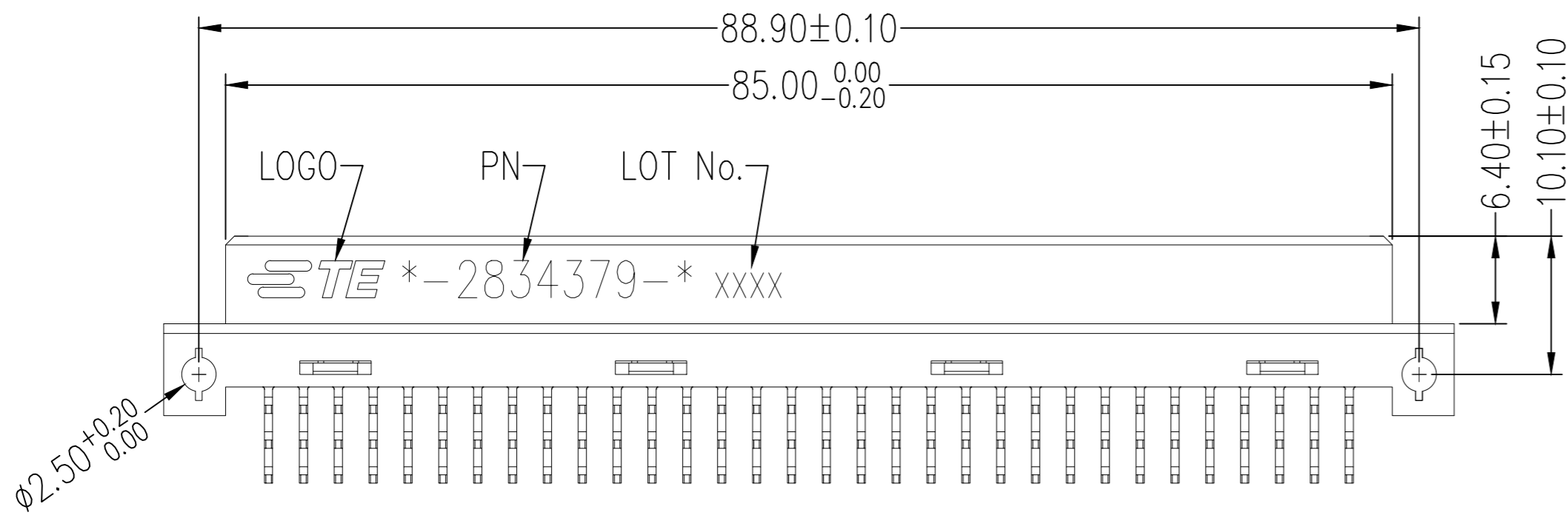
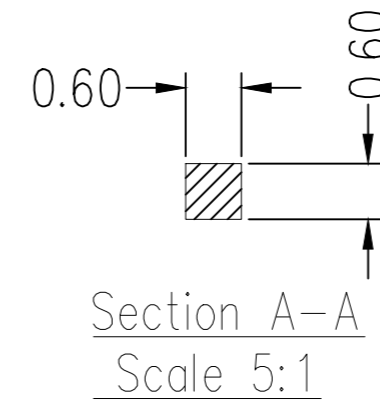
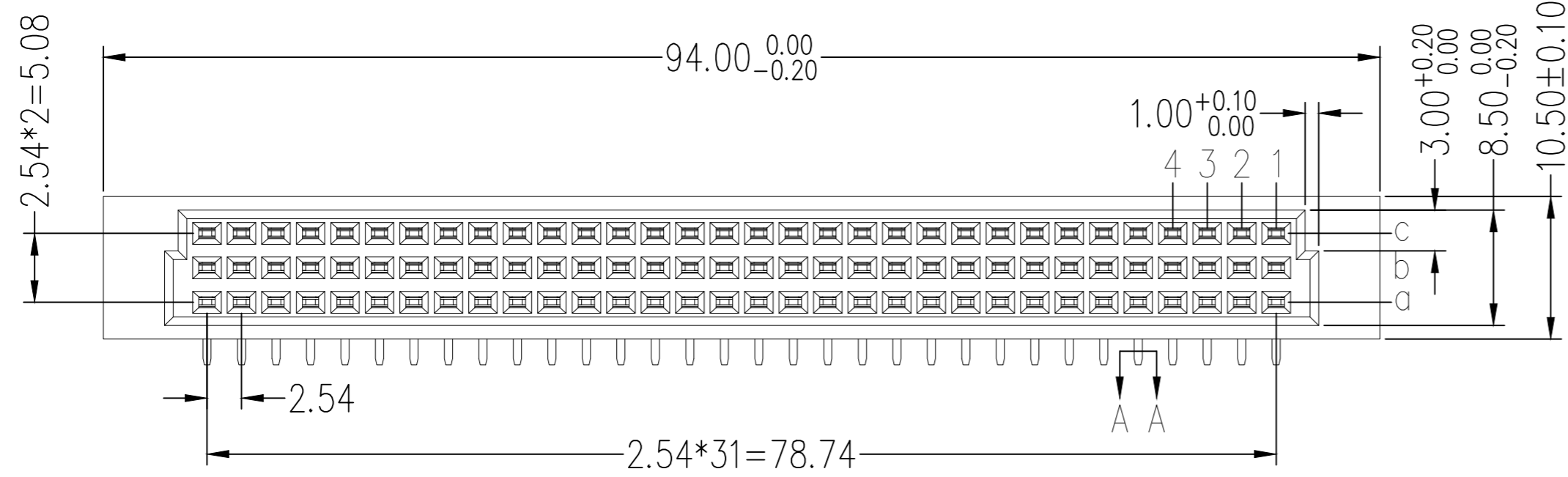


REVISIONS					
P	LTR	DESCRIPTION	DATE	DWN	APVD
A		INITIAL RELEASE	A	FF	MS

NOTES:

- 1,Current Rating: 2.0AMP
  - 2,Contact Resistance: 20mΩ Max
  - 3,Withstand Voltage: 1000V AC/DC
  - 4,Insulation Resistance: 1000000MΩ Min. at 100V DC
  - 5,Operation Temperature: -55°C to +105°C
  - 6,Contact Material: Copper alloy
  - 7,Contact Plating:
    - △ 50u" Nickel on underplating over all
    - △ 100u" Tin on solder area
    - △ 30u" Gold on Contact Area
    - △ 10u" Gold on Contact Area
    - △ 3u" Gold on Contact Area
  - 8,Insulator Material: PBT, Grey white, UL94V-0
- Recommended soldering process:  
Wave Soldering, Peak temperature: 250°C, 5s



RECOMMENDED P.C.B LAYOUT  
(COMPONENT SIDE)

DIM.A	PLATING	ROWS LOADED	POS	PN
4.57	△3 △4 △5	a b c	96	8-2834379-2
	△3 △4 △6	a b c	96	8-2834379-1
	△3 △4 △7	a b c	96	8-2834379-0
	△3 △4 △5	a c	64	7-2834379-2
	△3 △4 △6	a c	64	7-2834379-1
	△3 △4 △7	a c	64	7-2834379-0
4.00	△3 △4 △5	a b c	96	6-2834379-2
	△3 △4 △6	a b c	96	6-2834379-1
	△3 △4 △7	a b c	96	6-2834379-0
	△3 △4 △5	a c	64	5-2834379-2
	△3 △4 △6	a c	64	5-2834379-1
	△3 △4 △7	a c	64	5-2834379-0
3.00	△3 △4 △5	a b c	96	4-2834379-2
	△3 △4 △6	a b c	96	4-2834379-1
	△3 △4 △7	a b c	96	4-2834379-0
	△3 △4 △5	a c	64	3-2834379-2
	△3 △4 △6	a c	64	3-2834379-1
	△3 △4 △7	a c	64	3-2834379-0
2.50	△3 △4 △5	a b c	96	2-2834379-2
	△3 △4 △6	a b c	96	2-2834379-1
	△3 △4 △7	a b c	96	2-2834379-0
	△3 △4 △5	a c	64	1-2834379-2
	△3 △4 △6	a c	64	1-2834379-1
	△3 △4 △7	a c	64	1-2834379-0

THIS DRAWING IS A CONTROLLED DOCUMENT.		DWN	21DEC2018			TE Connectivity			
DIMENSIONS: mm		CHK	21DEC2018			NAME		CELLO RECEPTACLE THROUGH HOLE 2.54MM PITCH RIGHT ANGLE TYPE	
TOLERANCES UNLESS OTHERWISE SPECIFIED:		APVD	21DEC2018			PRODUCT SPEC		SIZE	
0 PLC ± -		1 PLC ± -	2 PLC ± 0.25			APPLICATION SPEC		CAGE CODE	
3 PLC ± -		4 PLC ± -	ANGLES ± -	WEIGHT		DRAWING NO			
MATERIAL		FINISH		CUSTOMER DRAWING		RESTRICTED TO			
				A2 00779		SCALE 1:1			
				C=2834379		SHEET 1 of 1			
						REV A			