

THIS DRAWING IS UNPUBLISHED.
DIFFUSION RESTREINTE

RELEASED FOR PUBLICATION
LIBRE A LA DIFFUSION

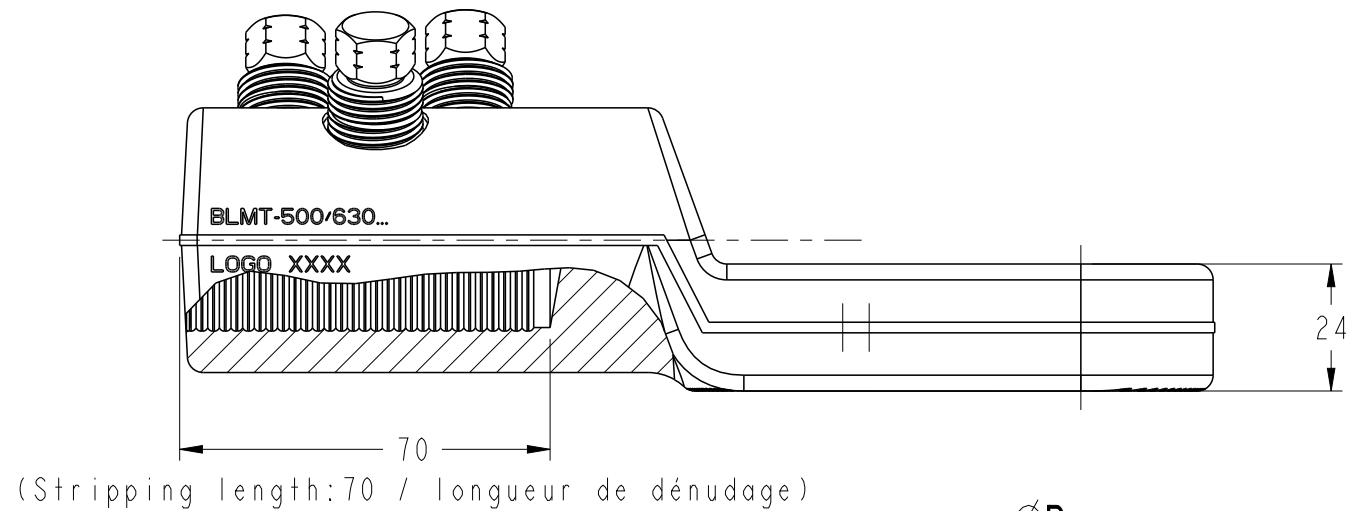
20

© COPYRIGHT 20 BY -

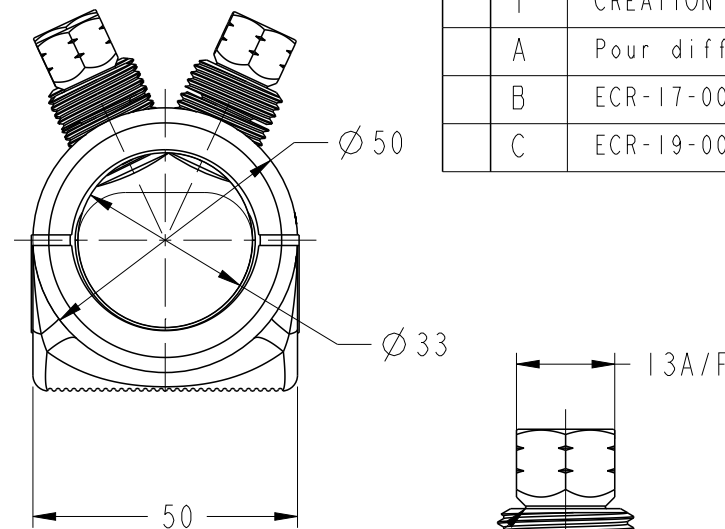
ALL RIGHTS RESERVED.
TOUS DROITS RESERVES

REVISIONS

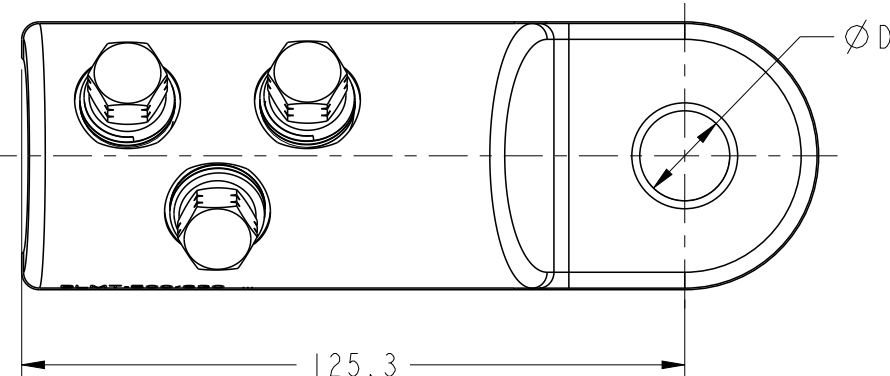
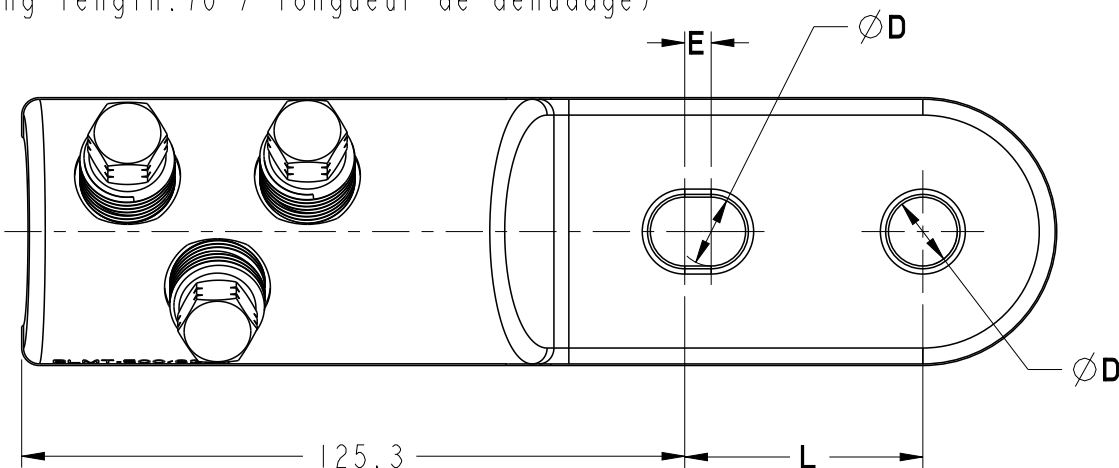
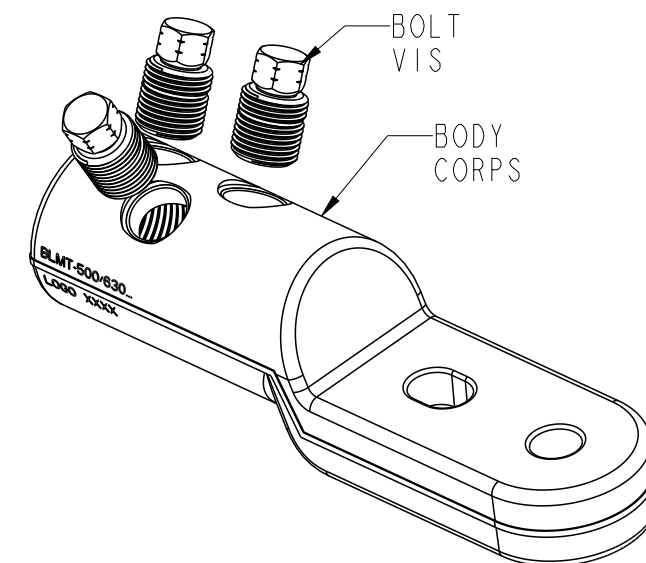
P	LTR REV	DESCRIPTION MODIFICATIONS	DATE	DWN DESS.	APVD APP.
	I	CREATION	24NOV2015	JB	NA
	A	Pour diffusion	18JAN2016	JB	ED
	B	ECR-17-007487	29/05/17	JB	NA
	C	ECR-19-007819	17MAY2019	JB	BM



(Stripping length: 70 / longueur de dénudage)



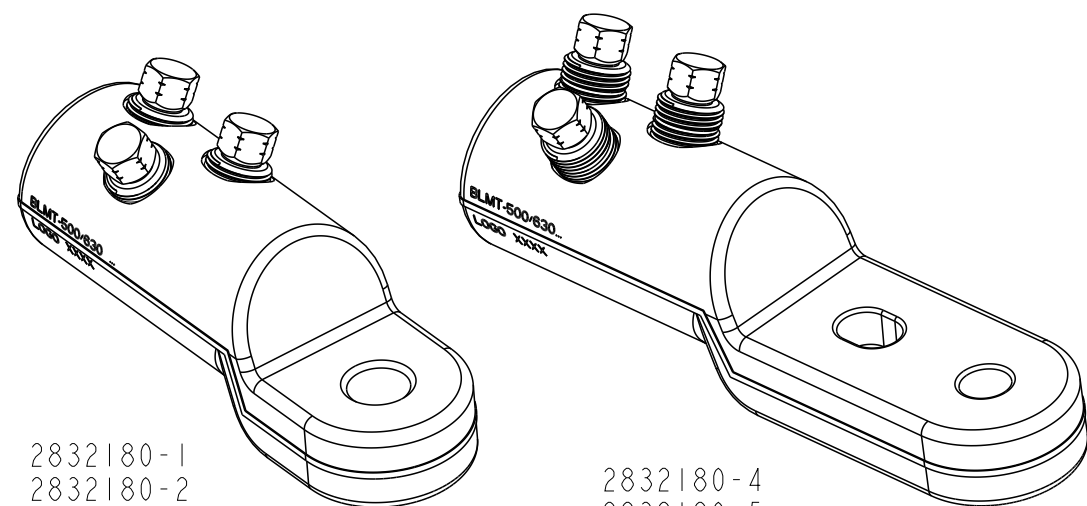
2 SHEAR POINTS
2 POINTS DE RUPTURE



BLMT-500/630 MK2-2x13(B1)	2832180-6	2x13	5	45	631g
BLMT-500/630 MK2-2x13-50	2832180-5	2x13	10	50	629g
BLMT-500/630 MK2-2x13	2832180-4	2x13	5	45	631g
BLMT-500/630 MK2-21	2832180-3	21	-	-	491g
BLMT-500/630 MK2-17	2832180-2	17	-	-	493g
BLMT-500/630 MK2-13	2832180-1	13	-	-	495g
DESCRIPTION	PART NUMBER	ØD	E	L	WEIGHT

	AL				CU		
	ROUND STRANDED /Circ. câblé /RM	ROUND SOLID /Circ. massif /RE	SECTOR STRANDED /Sectoral câblé /SM	SECTOR SOLID /Sectoral massif /SE	ROUND STRANDED /Circ. câblé /RM	SECTOR STRANDED /Sectoral câblé /SM	ROUND FLEXIBLE /Circ. souple
CONDUCTOR CROSS-SECTION /Section conducteur /Querschnittsbereich mm ²	500-630	500-630	-	-	500-630	-	500 (Class 5)
CONDUCTOR DIAMETER /Diamètre conducteur /Leiterdurchmesser mm	Ø25,3-Ø32,5	Ø24-Ø28,4	-	-	Ø25,3-Ø32,5	-	Ø31-Ø32,5

TOLERANCES UNLESS
OTHERWISE SPECIFIED
TOLERANCES NON SPECIFIEES: -



2832180-1
2832180-2
2832180-3

2832180-4
2832180-5
2832180-6

THIS DRAWING IS A CONTROLLED DOCUMENT.
CE PLAN EST UN DOCUMENT CONTROLE PAR TYCO ELECTRONICS CORPORATION.
IL EST SUSCEPTIBLE D'ETRE REVISE. POUR OBTENIR LA DERNIERE REVISION,
CONTACTER LE SERVICE TECHNIQUE DE TYCO ELECTRONICS SIMEL SAS,
21220 GEVREY-CHAMBERTIN, FRANCE

DIMENSIONS: mm	TOLERANCES UNLESS OTHERWISE SPECIFIED TOLERANCES NON SPECIFIEES (SUIV NB DE DECIMALES): 0 PLC/DEC: ± 1 PLC/DEC: ±0.1 2 PLC/DEC: ±0.01 3 PLC/DEC: ±0.001 4 PLC/DEC: ±0.0001 ANGLES ±
MATERIAL MATIERE	FINISH FINITION
ALL ALLOY	TINNING

DWN/DESSINE BERLAND	24-Nov-15
CHK/VERIFIE DEREY	-
APVD/APPROUVE ALMEIDA	-
PRODUCT SPEC SPEC. PRODUIT	-
APPLICATION SPEC SPEC. APPLICATION	IEC 61238
WEIGHT MASSE APPROX.	-
CUSTOMER DRAWING /PLAN CLIENT	UNIQUEMENT POUR REFERENCE



NAME TITRE	BLMT 500/630 MK2-13-17-21 BLMT 500/630 MK2-2x13 BLMT 500/630 MK2-2x13-50		
SIZE FORMAT	CAGE CODE	DRAWING NO No PLAN	RESTRICTED TO RESERVE A
A3	00779	C=2832180	-
	SCALE ECHELLE	SHEET FEUILLE	OF DE
	1:2	1	REV C