

THIS DRAWING IS UNPUBLISHED.
DIFFUSION RESTREINTE

RELEASED FOR PUBLICATION
LIBRE A LA DIFFUSION

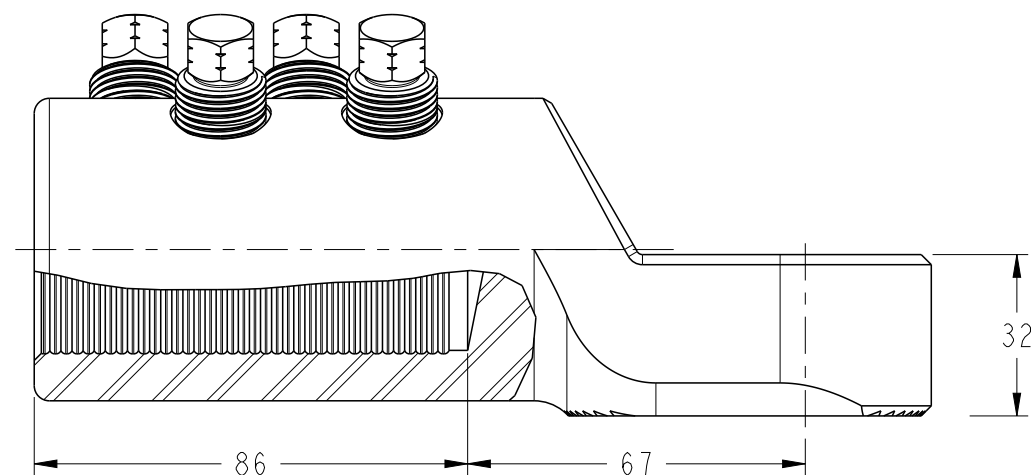
2011

© COPYRIGHT 2011 BY -

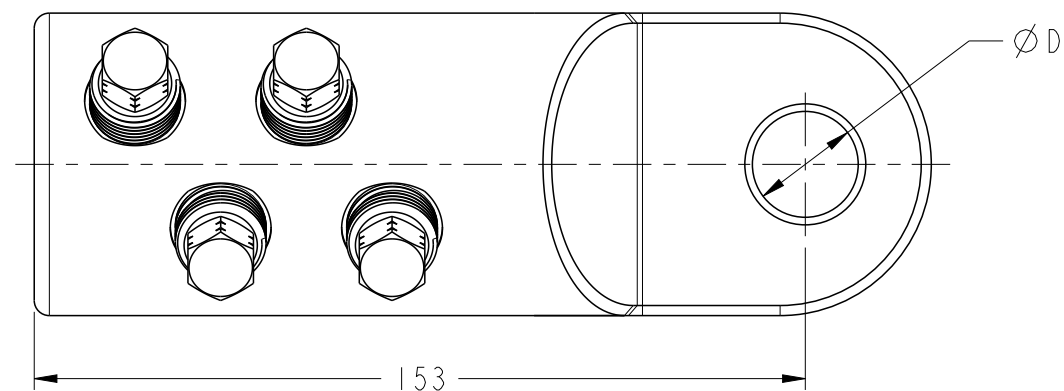
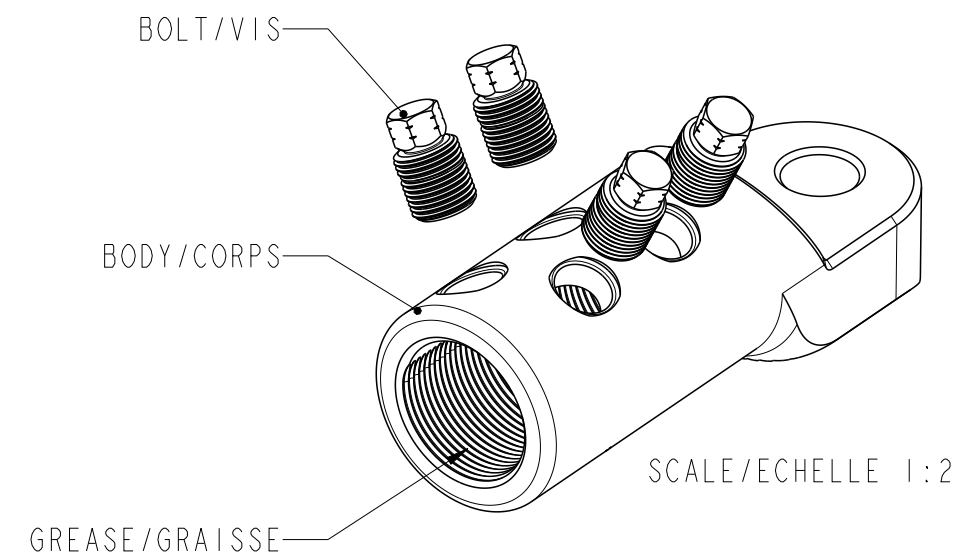
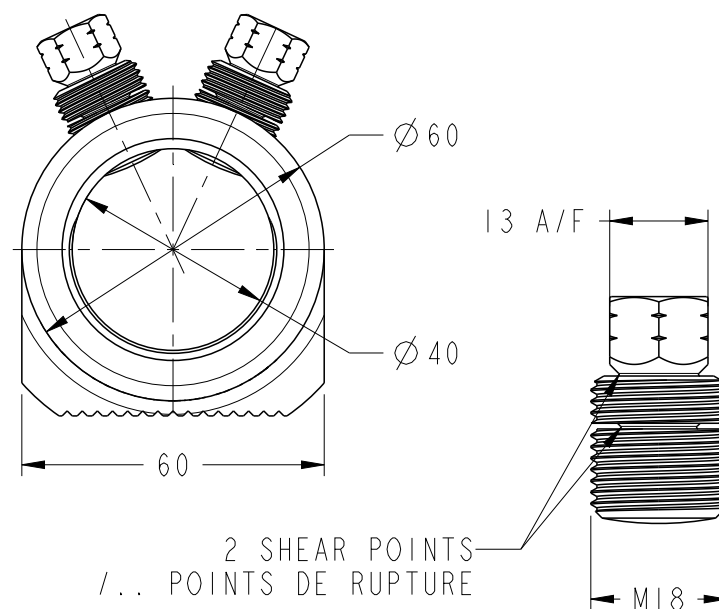
ALL RIGHTS RESERVED.
TOUS DROITS RESERVES

REVISIONS

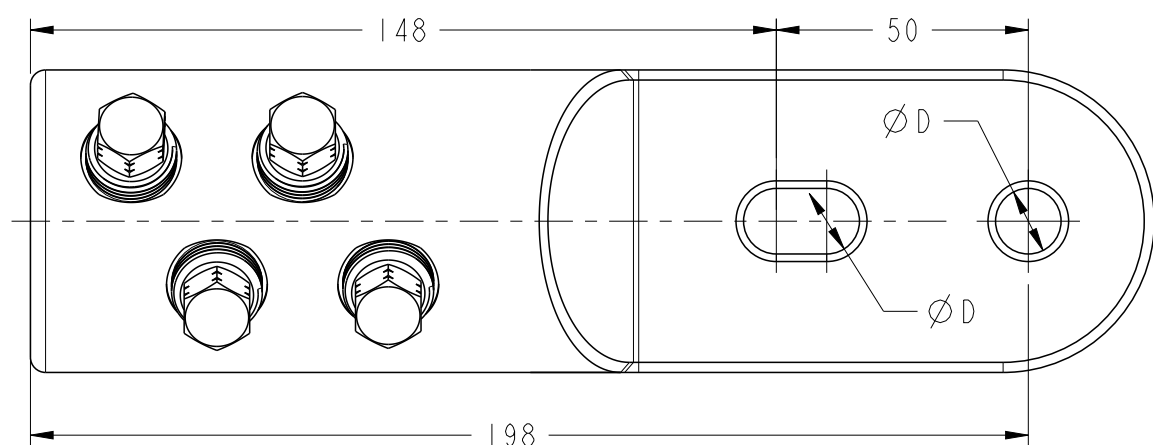
P	LTR REV	DESCRIPTION MODIFICATIONS	DATE	DWN DESS.	APVD APP.
	A	CREATION	09FEB2015	LP	NA
	B	ECR-15-016152	23/11/15	JB	AG
	C	ECR-18-019199 (SPAC. 50 WAS 40 ON -3)	13DEC2018	BM	NA



(STRIPPING LENGTH : 85
LONGUEUR DE DENUDAGE : ...)

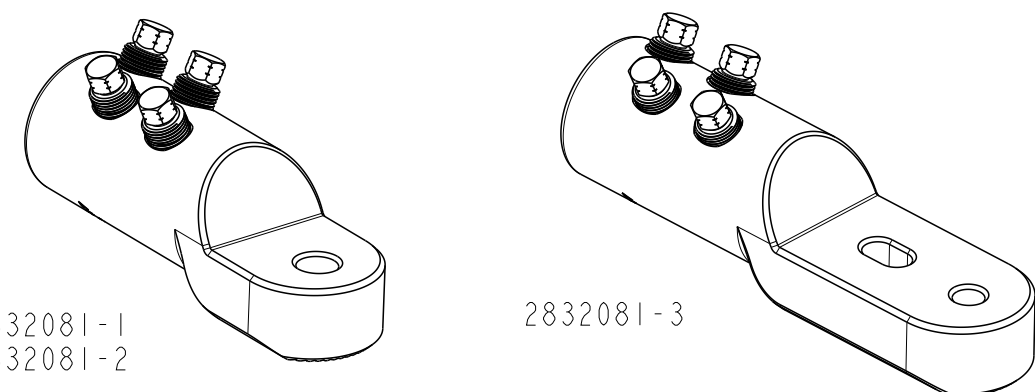


BLMT-800/1000-2x13	2832081-3	Ø13	960g
BLMT-800/1000-21	2832081-2	Ø21	864g
BLMT-800/1000-17	2832081-1	Ø17	874g
DESCRIPTION	PART NUMBER	ØD	WEIGHT



	AL				CU	
	ROUND STRANDED /Circ câblé /RM	ROUND SOLID /Circ massif /RE	SECTOR STRANDED /Sectoral câblé /SM	SECTOR SOLID /Sectoral massif /SE	ROUND STRANDED /Circ câblé /RM	SECTOR STRANDED /Sectoral câblé /SM
CONDUCTOR CROSS-SECTION /Section conducteur /Querschnittsbereich mm ²	800-1000	800-1000			800-1000	
CONDUCTOR DIAMETER /Diamètre conducteur /Leiterdurchmesser mm	Ø 32.5-Ø 39.5	Ø 30.9-Ø 36	-	-	Ø 32.5-Ø 39.5	-

TOLERANCES UNLESS OTHERWISE SPECIFIED
TOLERANCES NON SPECIFIEES: -



THIS DRAWING IS A CONTROLLED DOCUMENT.
CE PLAN EST UN DOCUMENT CONTROLE PAR TYCO ELECTRONICS CORPORATION.
IL EST SUSCEPTIBLE D'ETRE REVISE. POUR OBTENIR LA DERNIERE REVISION,
CONTACTER LE SERVICE TECHNIQUE DE TYCO ELECTRONICS SIMEL SAS,
21220 GEVREY-CHAMBERTIN, FRANCE

DWN/DESSINE BERLAND 22/11/15
CHK/VERIFIE DEREY
APVD/APPROUVE N. ALMEIDA
PRODUCT SPEC SPEC. PRODUIT -
APPLICATION SPEC SPEC. APPLICATION IEC-61238-1
WEIGHT MASSE APPROX. SEE TABLE
Customer Drawing /PLAN CLIENT

STE TE Connectivity

NAME TITRE BLMT-800/1000-17
BLMT-800/1000-21
BLMT-800/1000-2x13

SIZE FORMAT A3
CAGE CODE -
DRAWING NO No PLAN C-2832081
RESTRICTED TO RESERVE A -

UNIQUEMENT POUR REFERENCE
SCALE ECHELLE 1:3
SHEET FEUILLE 1 OF DE 1
REV C