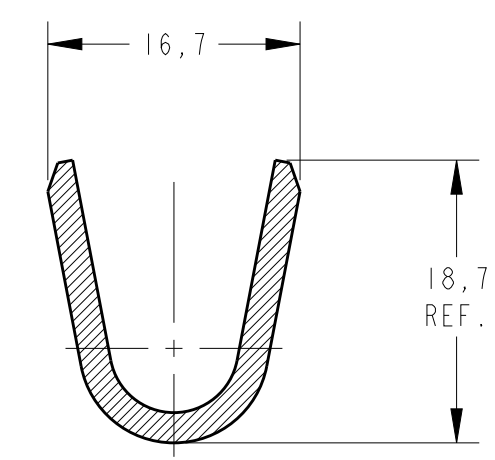
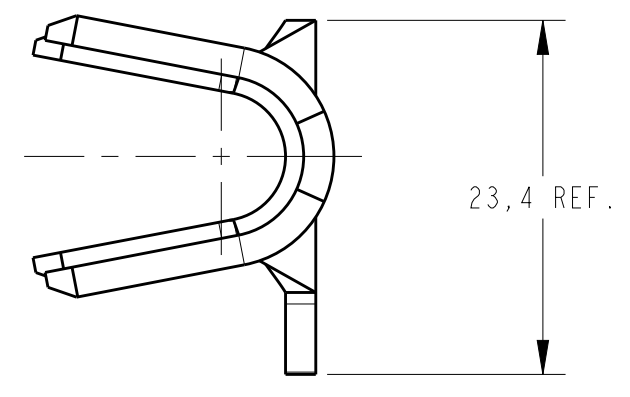
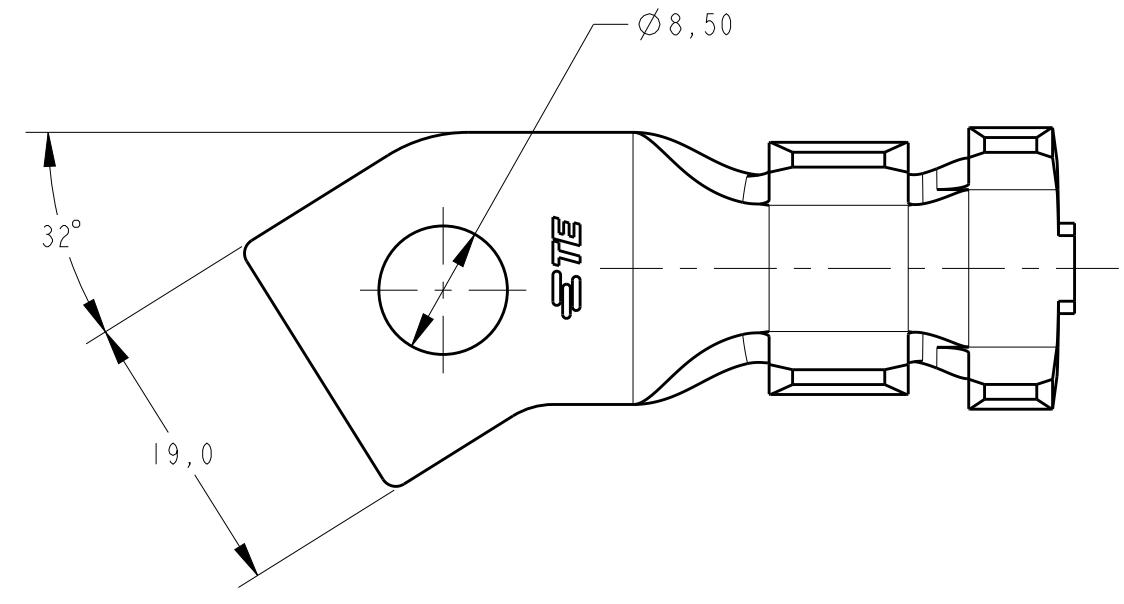


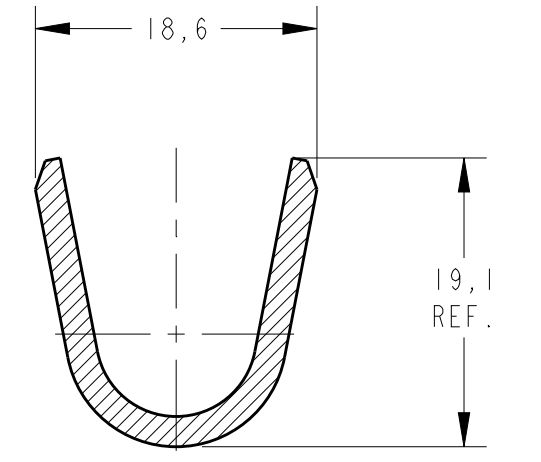
THIS DRAWING IS UNPUBLISHED. RELEASED FOR PUBLICATION 20
 © COPYRIGHT 20 ALL RIGHTS RESERVED.

LOC		DIST		REVISIONS			
P	LTR	DESCRIPTION	DATE	DWN	APVD		
AP	-						
A		INITIAL RELEASE RSA-14-089-01	25AUG2014	NCL	MG		
B		REVISED DRAWING ECO-15-012638	02SEP2015	NCL	MG		

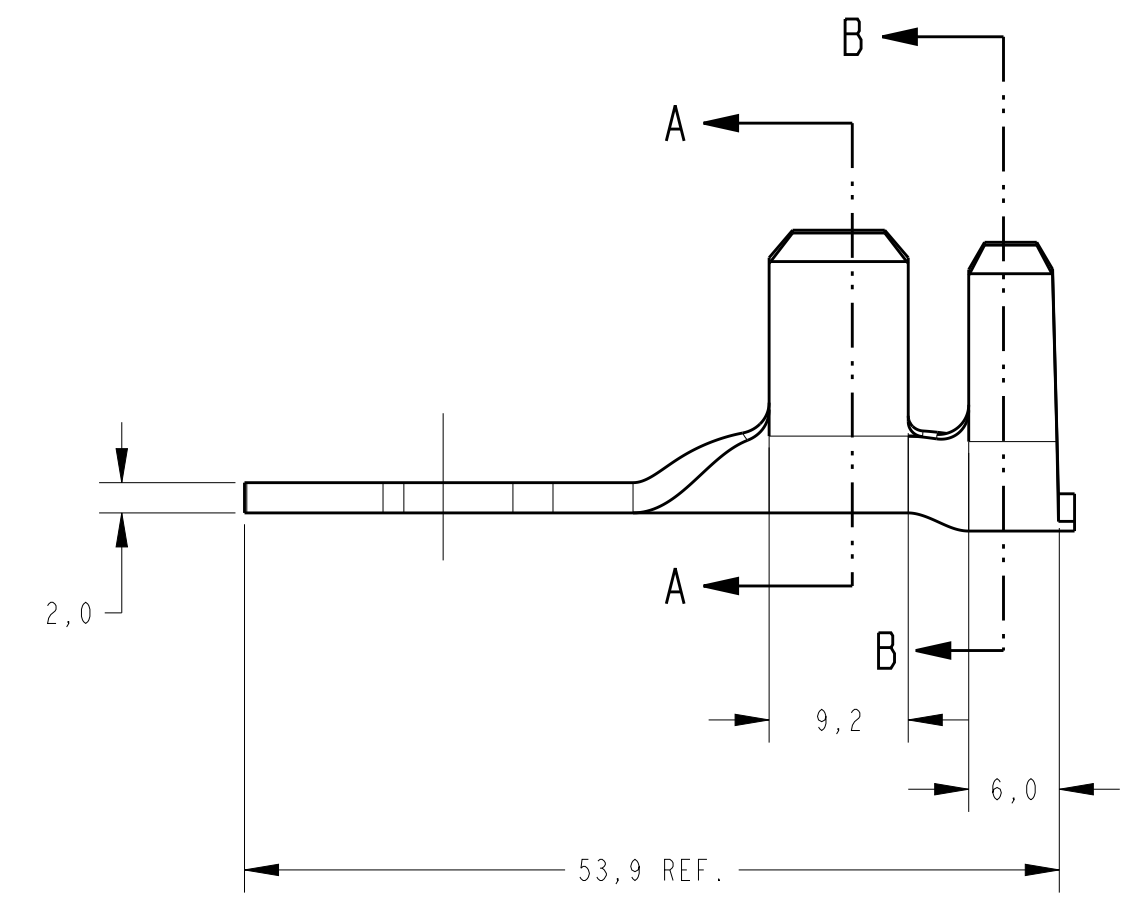
creo
 Creo Parametric 2.0
DO NOT REVISE EXCEPT BY CAD



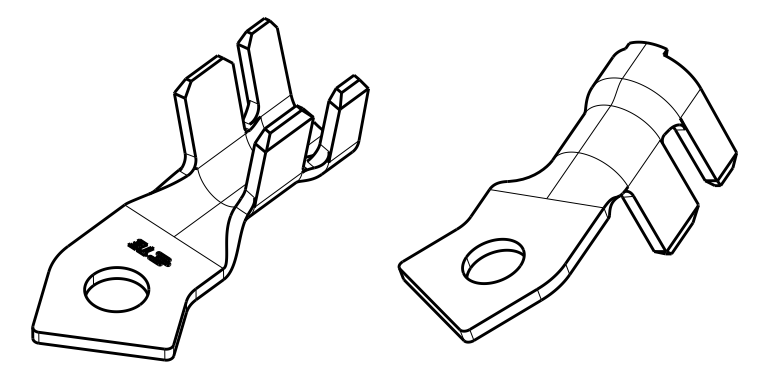
SECTION A-A
 SCALE 2:1



SECTION B-B
 SCALE 2:1



- 1 - MATERIAL LATÃO CuZn37 (UNS C27200)
 - MATERIAL BRASS CuZn37 (UNS C27200)
- 2 - ACABAMENTO PÓS ESTANHADO, ESPESSURA DA CAMADA DE 15µm MÍNIMO
 - FINISH POST TIN PLATED, LAYER THICKNESS OF 15µm MINIMUM
- 3 - ACABAMENTO PÓS ESTANHADO, ESPESSURA DA CAMADA DE 8 a 15µm SOBRE NÍQUEL, ESPESSURA DA CAMADA DE 2,5 a 5µm
 - FINISH POST TIN PLATED, LAYER THICKNESS OF 8 TO 15µm OVER NICKEL, LAYER THICKNESS OF 2,5 TO 5µm



PERSPECTIVE VIEWS
 SCALE 1:1

WIRE RANGE	INSUL. RANGE
25 - 35mm ²	Ø8,7~11,6mm

ESTANHADO SOBRE NÍQUEL / TIN OVER NICKEL 3		LATÃO/BRASS 1	2819152-3
NU / PLAIN		LATÃO/BRASS 1	2819152-2
ESTANHADO / TIN PLATED 2		LATÃO/BRASS 1	2819152-1
FINISH		MATERIAL	PART NUMBER
THIS DRAWING IS A CONTROLLED DOCUMENT.		DWN NCLAPRESA 25AUG2014	 TE Connectivity TERMINAL RING TONGUE M8
DIMENSIONS: mm		CHK ECHRISTIANO 25AUG2014	
TOLERANCES UNLESS OTHERWISE SPECIFIED:		APVD MGLSOLDI 25AUG2014	
0 PLC ± 1 PLC ±0,3 2 PLC ± 3 PLC ± 4 PLC ± ANGLES ±1° FINISH		NAME	
MATERIAL SEE TABLE		PRODUCT SPEC - / -	SIZE A2
SEE TABLE		APPLICATION SPEC - / -	CAGE CODE -
		WEIGHT - / -	DRAWING NO. C-2819152
		Customer Drawing	RESTRICTED TO -
		SCALE 2:1	SHEET 1 OF 1
			REV B