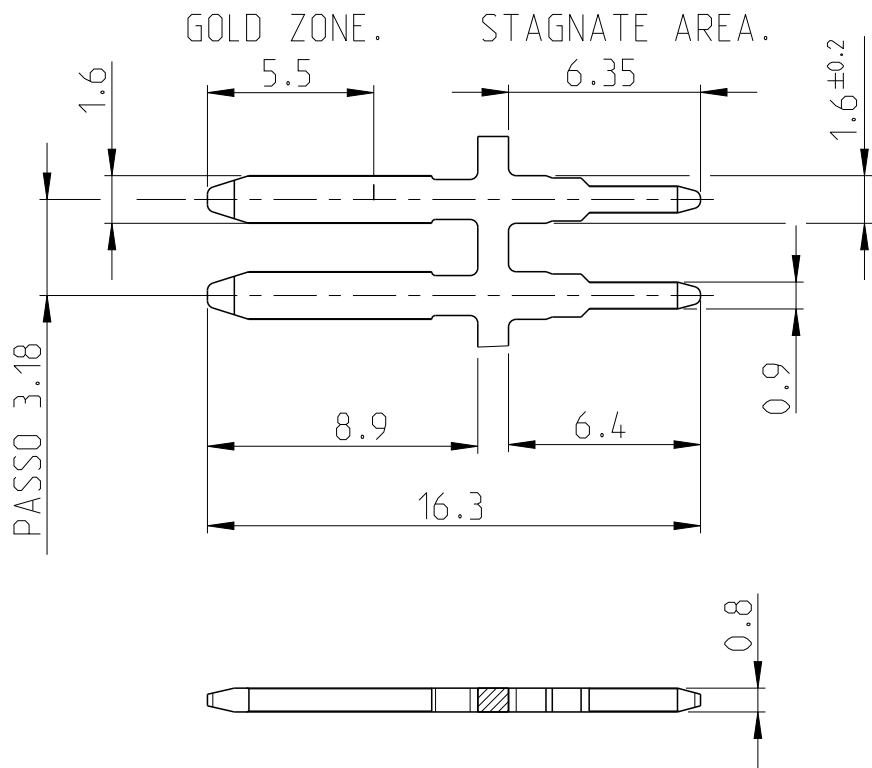
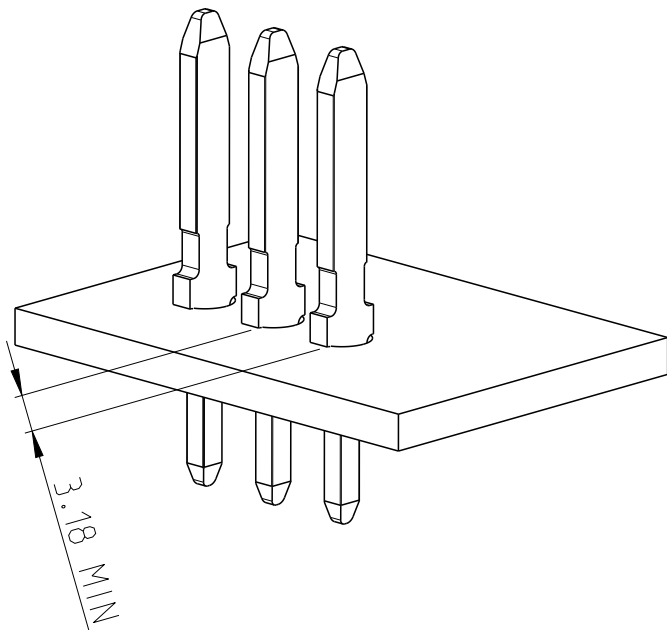
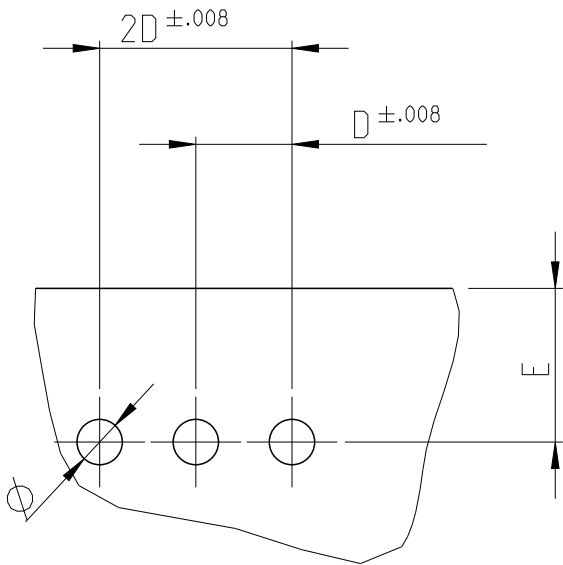


P	LTR	DESCRIPTION	DATE	DWN	APVD
	A	STREAMLINING OF CONTACT BASE MATERIAL TO BRASS	08APR2013	SMT	RP
	B	PLATING CHANGED FROM BRIGHT TO MATTE TIN	07DEC2023	SP	KJK
	C	PLATING THICKNESS OPTIMIZATION	14OCT2024	SN	KJK



1 DIAMETER $\varnothing=1.5^{\pm005}$ mm RECOMMENDED

2 D MIN = 3.18

3 D AND E DEPEND ON CUSTOMER REQUIREMENT


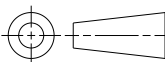
4 C.S. THICKNESS = 1.57 nom. FOR SOLDER APPLICATION

5 CONTACTS ARE SUPPLIED IN QUANTITIES OF 25000 ON CARDBOARD REELS

6 THE SOLDER AREA ON THE CIRCUIT BOARD IS TINNED.

7 OBSOLETE PARTS: OBSOLETE CIS STREAMLINING PER D.RENAUD/D.SINISI

LS	<div><div>6</div><div>7</div></div>	OBSOLETE	<div>BRASS</div>	MIN 50μ Au IN CONTACT AREA AND 120μ TIN IN SOLDER AREA OVER MIN 50μ NICKEL.	1-280458-7
			<div>BRASS</div>	MIN 150μ TIN IN SOLDER AREA. OVER MIN 50μ NICKEL.	1-280458-6
	<div>6</div>		<div>BRASS</div>	MIN 30μ Au IN CONTACT AREA AND 120μ TIN IN SOLDER AREA. OVER MIN 50μ NICKEL.	1-280458-4
	<div>6</div>		<div>BRASS</div>	MIN 15μ (PdNi + Au Flash) IN CONTACT AREA AND 120μ TIN IN SOLDER AREA. OVER MIN 50μ NICKEL.	1-280458-3
			<div>MATERIAL</div>	FINISH	PART NO

THIS DRAWING IS A CONTROLLED DOCUMENT.		DWN - CHK - APVD - PRODUCT SPEC - APPLICATION SPEC - WEIGHT -	25MAY1977 25MAY1977 27MAY1977	<div>TE Connectivity</div>								
DIMENSIONS: mm	TOLERANCES UNLESS OTHERWISE SPECIFIED:	NAME POST MODU I FOR INSERTION ON P.C.B -			SIZE A 3		CAGE CODE 00779		DRAWING NO C-280458		RESTRICTED TO -	
	0 PLC ± 1 PLC ± 2 PLC ± 3 PLC ± 4 PLC ± ANGLES ±1°0'											
MATERIAL SEE TABLE	FINISH -											
CUSTOMER DRAWING				SCALE 4:1	SHEET 1 OF 1		REV C					