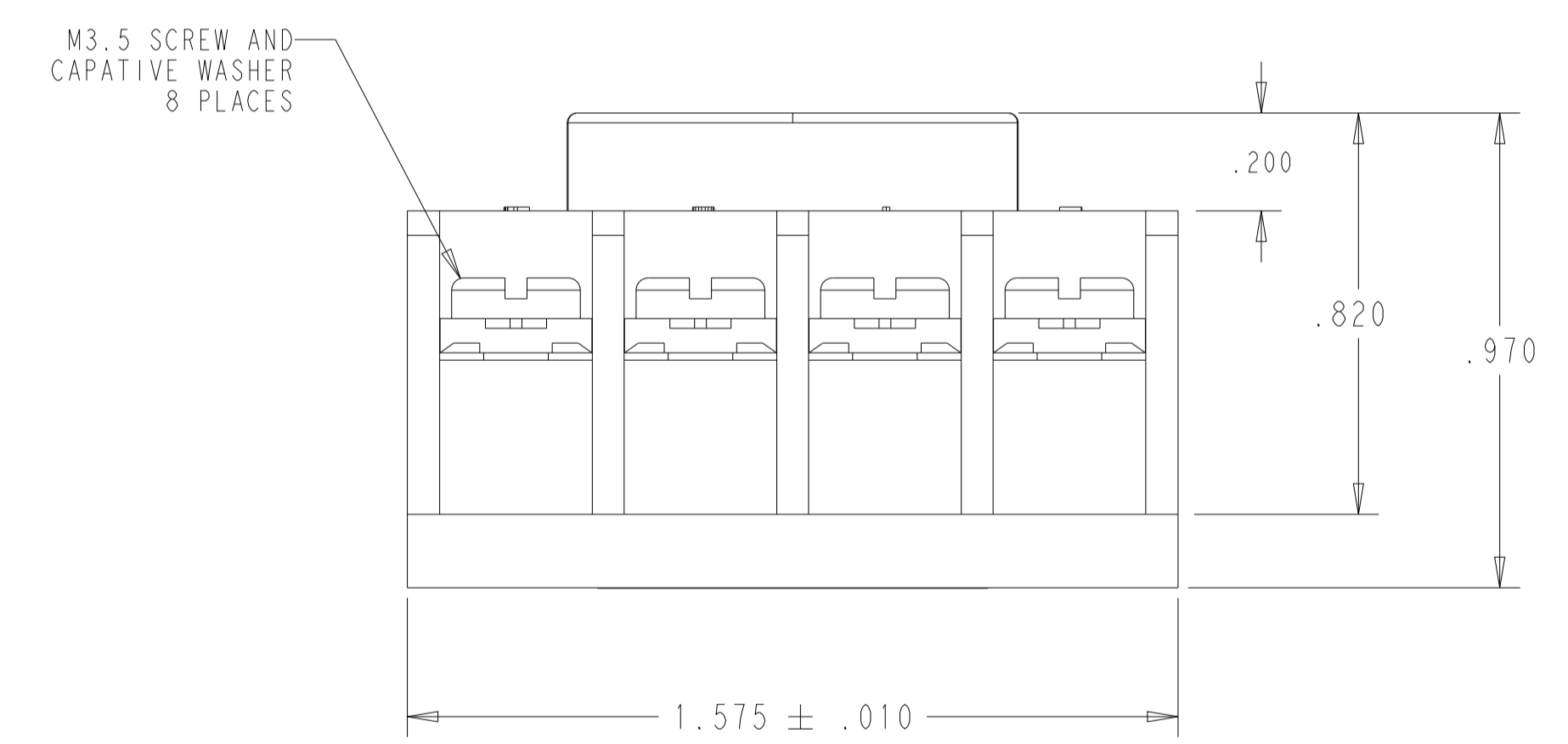
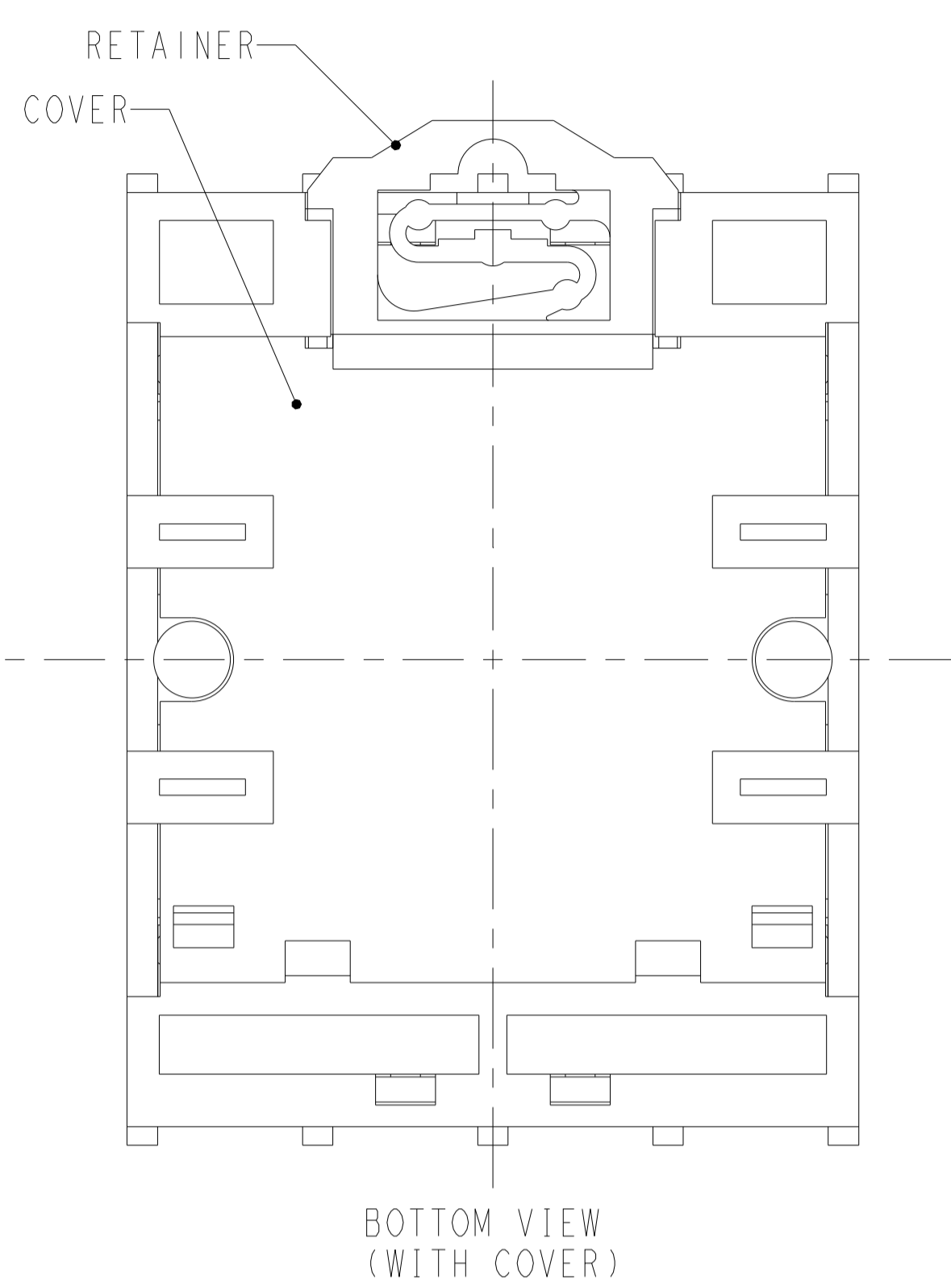
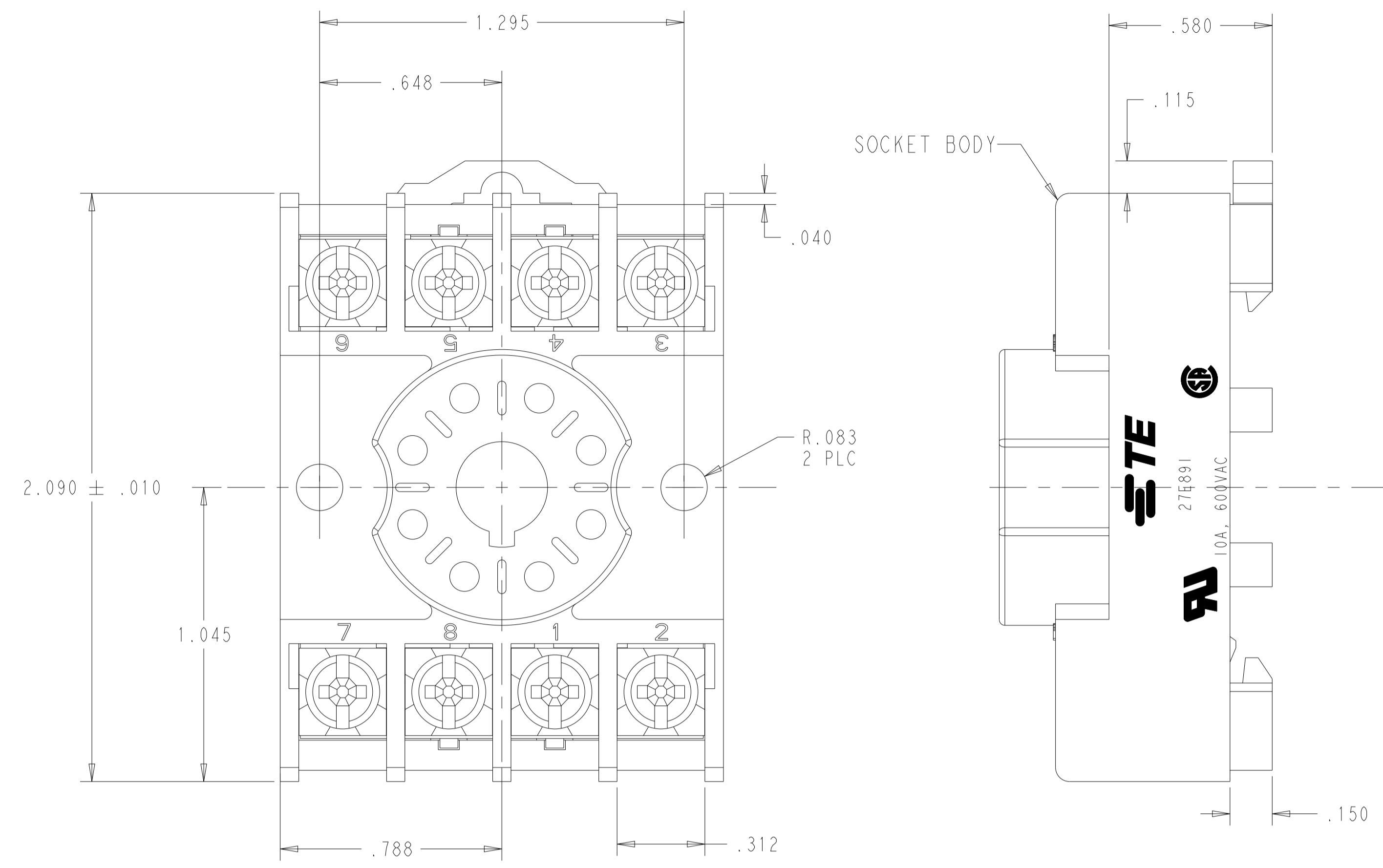
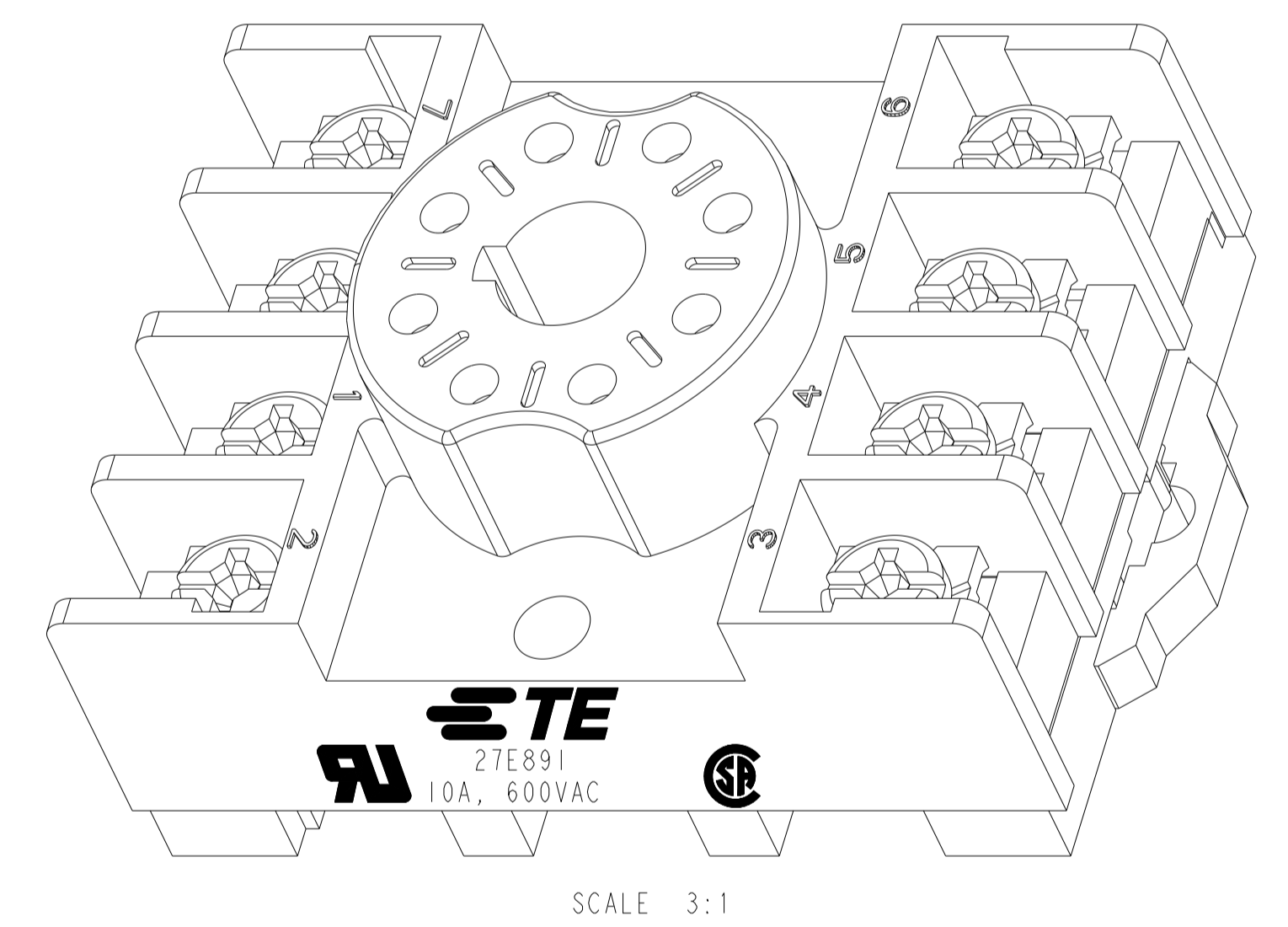
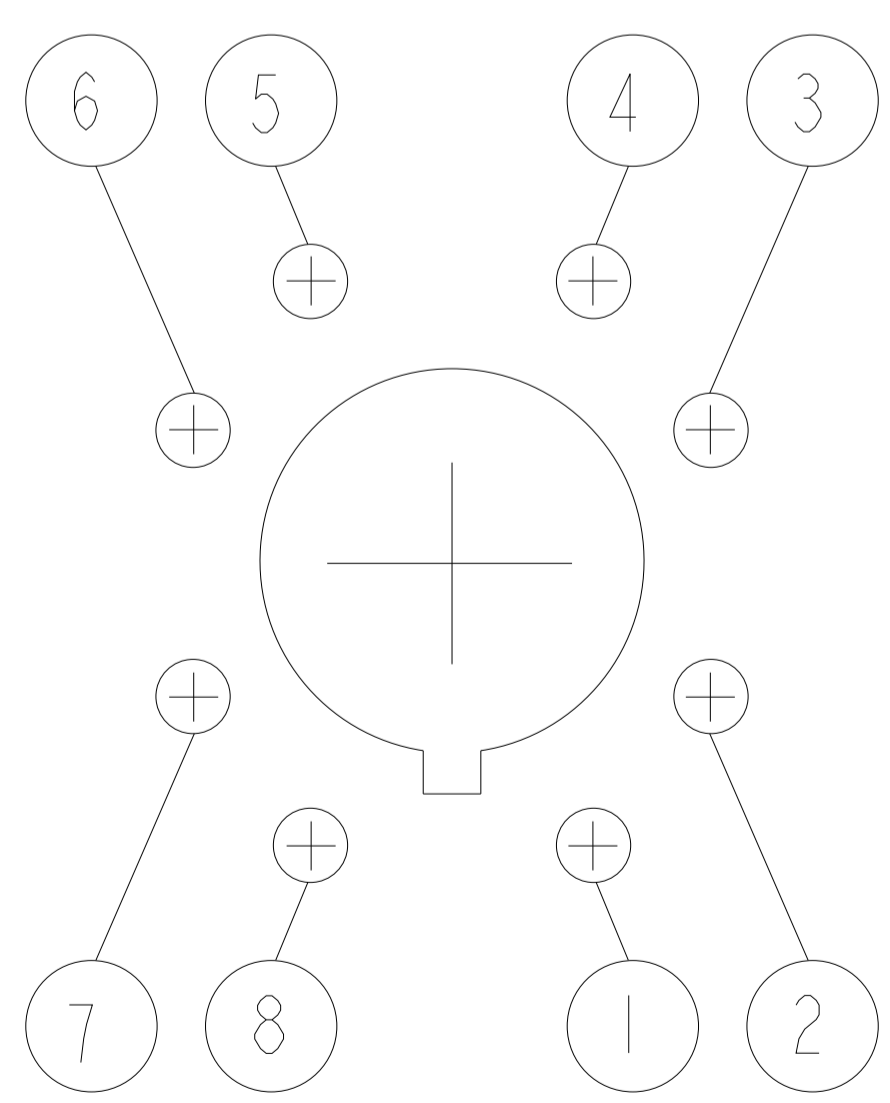


REVISIONS				
P	LTM	DESCRIPTION	DATE	APVD
A		ECN-24-263503	29APR2024	IS RJ



TERMINAL LOCATIONS



NOTES: UNLESS OTHERWISE SPECIFIED.

- RATINGS: 600V, 10 AMPS.
ALL RATINGS ARE PER POLE WITH A MAXIMUM TOTAL RATING PER DEVICE OF 20 A, 600 V OR 30 A, 150 V.
- RECOMMENDED INSTALLATION TORQUE FOR M3.5 SCREW TERMINALS IS 7.5 IN-LB.
- SCREW TERMINALS ACCEPT UP TO TWO #12 AWG WIRES.

THIS DRAWING IS A CONTROLLED DOCUMENT.		DWN: J. SALAZAR 29APR2024	TE PART NUMBER: 2-1419106-3	
DIMENSIONS:		CHK: R. JIMENEZ 29APR2024	TE Connectivity NAME: SOCKET ASSEMBLY, KRPA, 8, OCTAL, POL, GRAY DIN RAIL MOUNT	
TOLERANCES UNLESS OTHERWISE SPECIFIED:		APVD: R. JIMENEZ 29APR2024		
i/d 0 PLC ±.1 1 PLC ±.01 2 PLC ±.01 3 PLC ±.005 4 PLC ±.0001 ANGLES ±.0001 FINISH		PRODUCT SPEC	SIZE: A	CAGE CODE: 00779
MATERIAL:		APPLICATION SPEC	DRAWING NO: C=27E891	RESTRICTED TO: -
CUSTOMER DRAWING		WEIGHT: -	SCALE: 3:1	SHEET 1 OF 1
		REV: A		