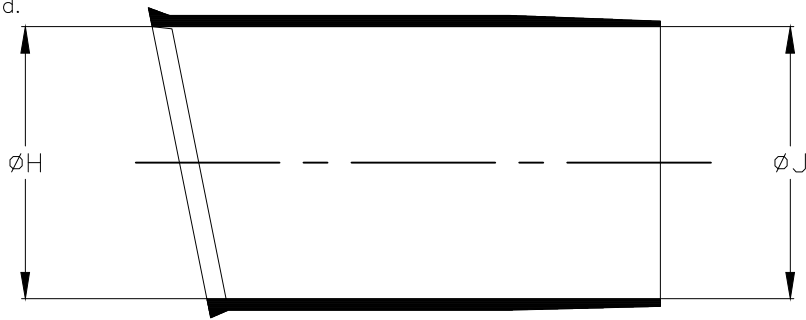
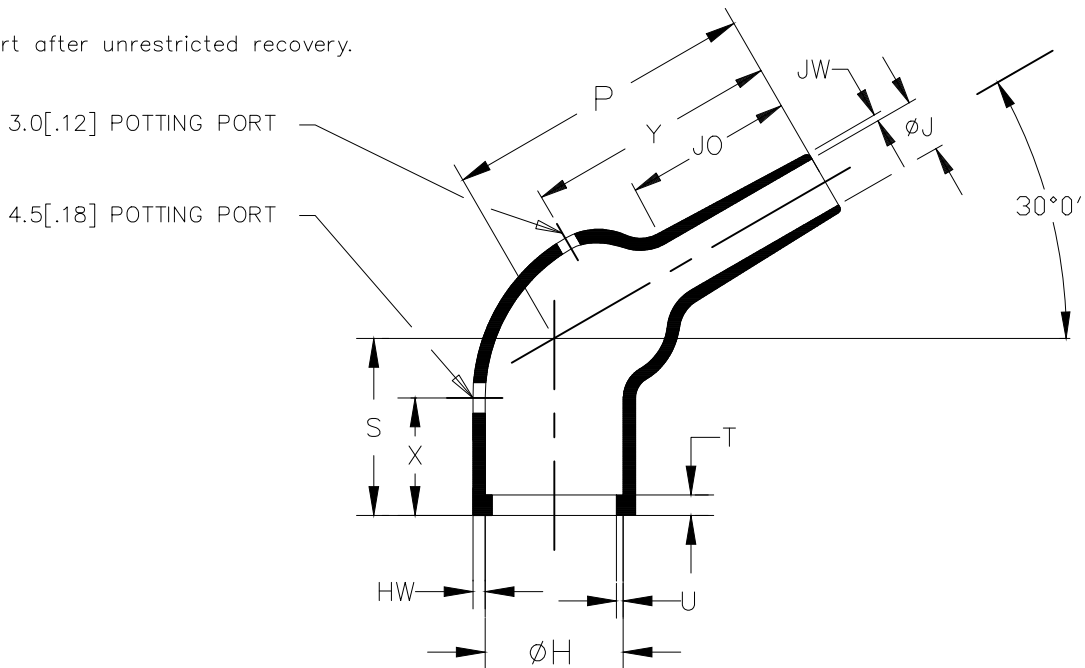


REVISIONS					
P	LTR	DESCRIPTION	DATE	DWN	APVD
	4	PRODUCTION ISSUE	01FEB2019	PNT	MT

a) Part as supplied.



b) Part after unrestricted recovery.



DIMENSIONS in millimetres
[in inches, for reference]

Part No.	H		J		P	S	T	U	JO	HW	JW	X	Y
	Min a	Max b	Min a	Max b	Min a	Min a	±10% b	±10% b	±10% b	±20% b	±20% b	±20% b	±20% b
264W012	36 [1.42]	21.4 [.84]	36 [1.42]	8.3 [.33]	46 [1.81]	26 [1.02]	3.0 [.12]	1.0 [.04]	25 [.98]	1.8 [.07]	1.0 [.04]	26 [1.02]	37 [1.46]

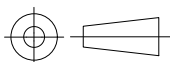
RELEASED FOR PUBLICATION

ALL RIGHTS RESERVED.

COPYRIGHT - TE Connectivity Ltd.

THIS DRAWING IS UNPUBLISHED.

DIMENSIONS: mm [INCHES]	DWN	01FEB2019	MATERIAL	SEE SHEET 2	FINISH	-		
	CHK	01FEB2019	TE Connectivity Ltd.					
TOLERANCES UNLESS OTHERWISE SPECIFIED:	APVD	01FEB2019						
	PRODUCT SPEC	-	NAME	LIPPED BOOT, 120 DEG				
0 PLC ± - 1 PLC ± - 2 PLC ± - 3 PLC ± - 4 PLC ± - ANGLES ± -	APPLICATION SPEC	-	SIZE	A4	CAGE CODE	00779		
	WEIGHT	-	DRAWING NO	C-264W012-XX-0		RESTRICTED TO	-	
CUSTOMER DRAWING			SCALE	DNS	SHEET	1 OF 2	REV	4



REVISIONS				
P	LTR	DESCRIPTION	DATE	APVD
-	-	SEE SHEET 1	-	-

COMPATIBILITY CHART				
MATERIAL DASH NO.	MATERIAL DESCRIPTION	RT SPEC	COATING SLASH NO.	COATING SPEC
-3	POLYOLEFIN, SEMI-RIGID	RT-301	/42;/86;/180	S1017;S1048;S1030
-4	POLYOLEFIN, FLEXIBLE	RT-1304	/42;/86;/180	S1017;S1048;S1030
-25	ELASTOMER, FLUID RESISTANT	RW-2070	/42;/86;/225	S1017;S1048;S1206

ORDERING INFORMATION

264W012 - XX/XX - 0

COLOR DESIGNATOR
 ADHESIVE SLASH NUMBER
 (IF REQUIRED, SEE COMPATIBILITY CHART)
 MATERIAL DASH NUMBER
 (SEE COMPATIBILITY CHART)
 BASE PART NUMBER

NOTES:

- AS SUPPLIED DIMENSIONS ARE FOR UNCOATED PARTS. WHEN COATING IS ADDED, ENTRY DIAMETERS WILL REDUCE BY 1.5mm[.06] MAX.

RELEASED FOR PUBLICATION

ALL RIGHTS RESERVED.

© COPYRIGHT - TE Connectivity Ltd.

THIS DRAWING IS UNPUBLISHED.

DIMENSIONS: mm [INCHES]	DWN PRAVEEN N T	01FEB2019	MATERIAL	-	FINISH	-	
	CHK N NAGAR	01FEB2019	TE Connectivity Ltd.				
TOLERANCES UNLESS OTHERWISE SPECIFIED:	APVD M TAYLOR	01FEB2019					
0 PLC ± -	PRODUCT SPEC	-	NAME LIPPED BOOT, 120 DEG				
1 PLC ± -	APPLICATION SPEC	-					
2 PLC ± -	WEIGHT	-	SIZE	A4	CAGE CODE	00779	
3 PLC ± -		-	DRAWING NO	264W012-XX-0		RESTRICTED TO	-
4 PLC ± -			CUSTOMER DRAWING	SCALE	DNS	SHEET	2 OF 2
ANGLES ± -							