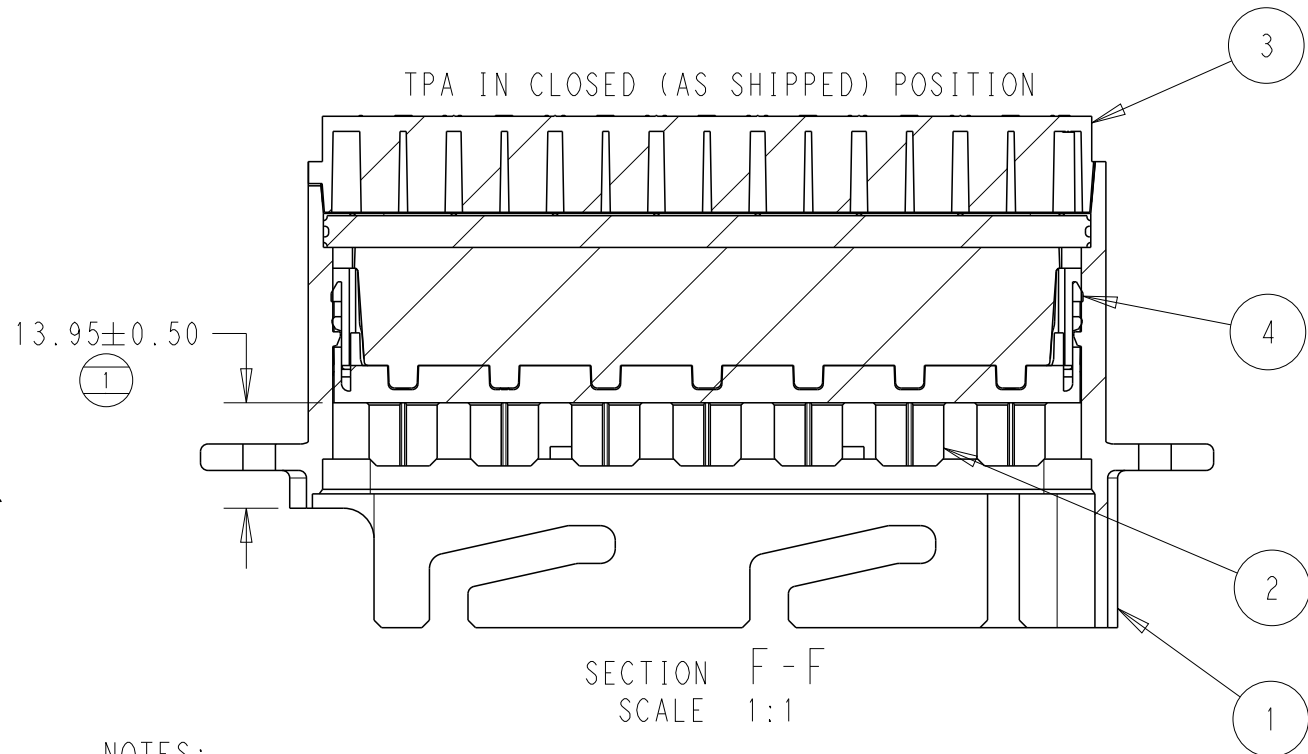
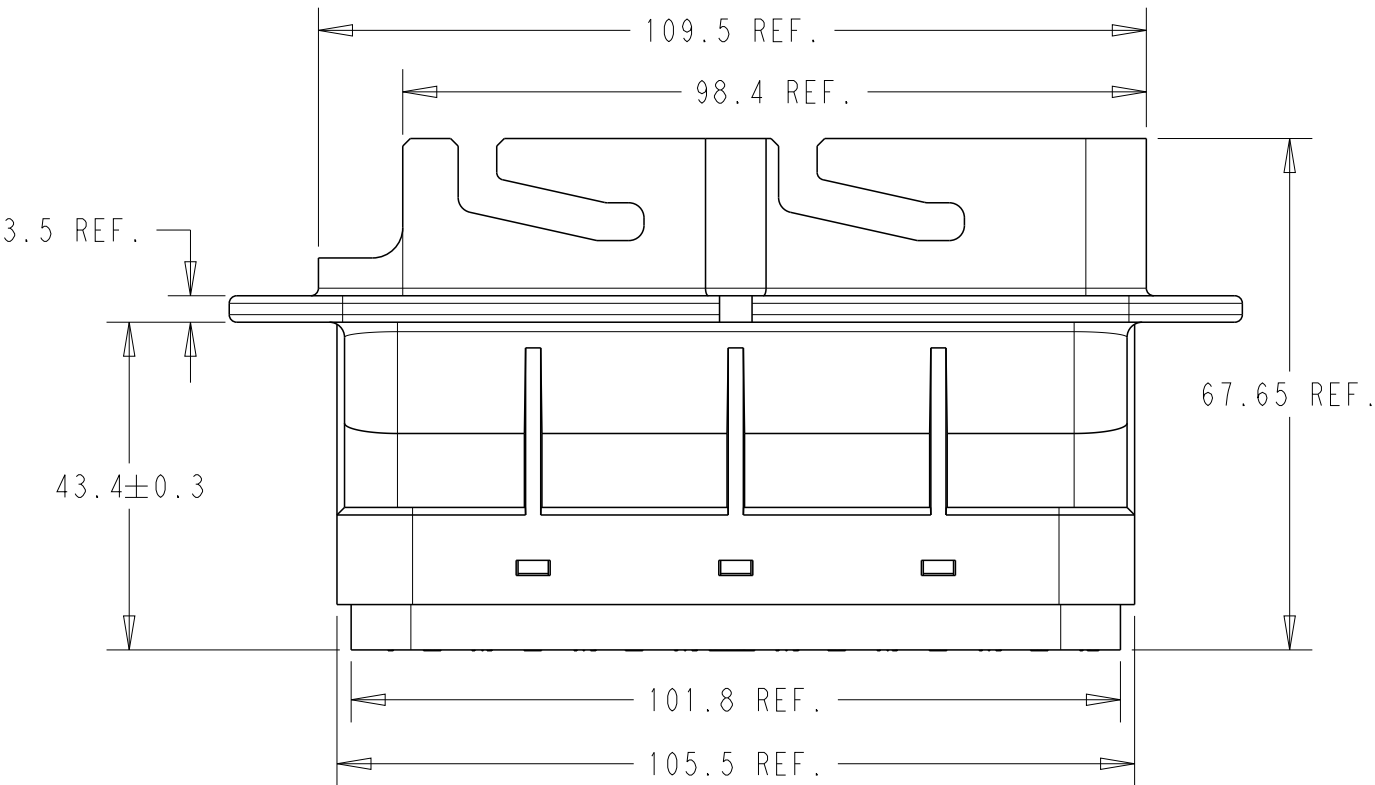
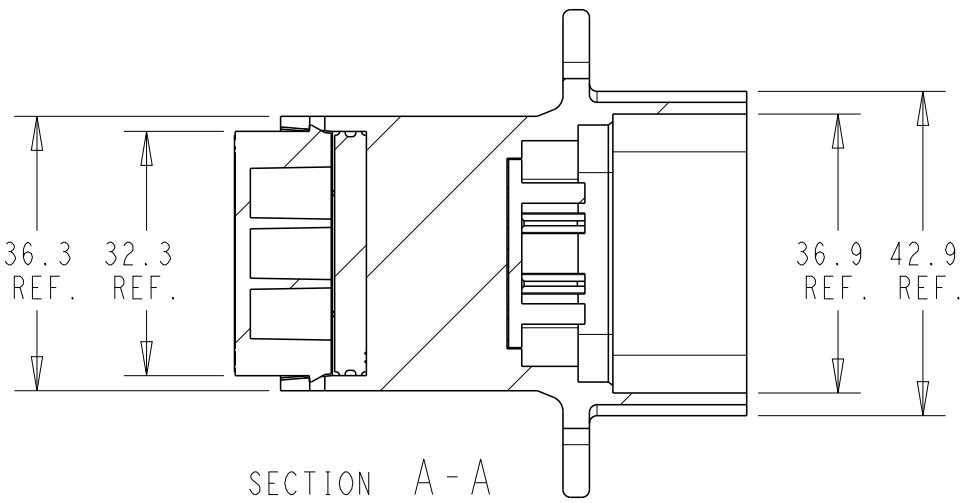
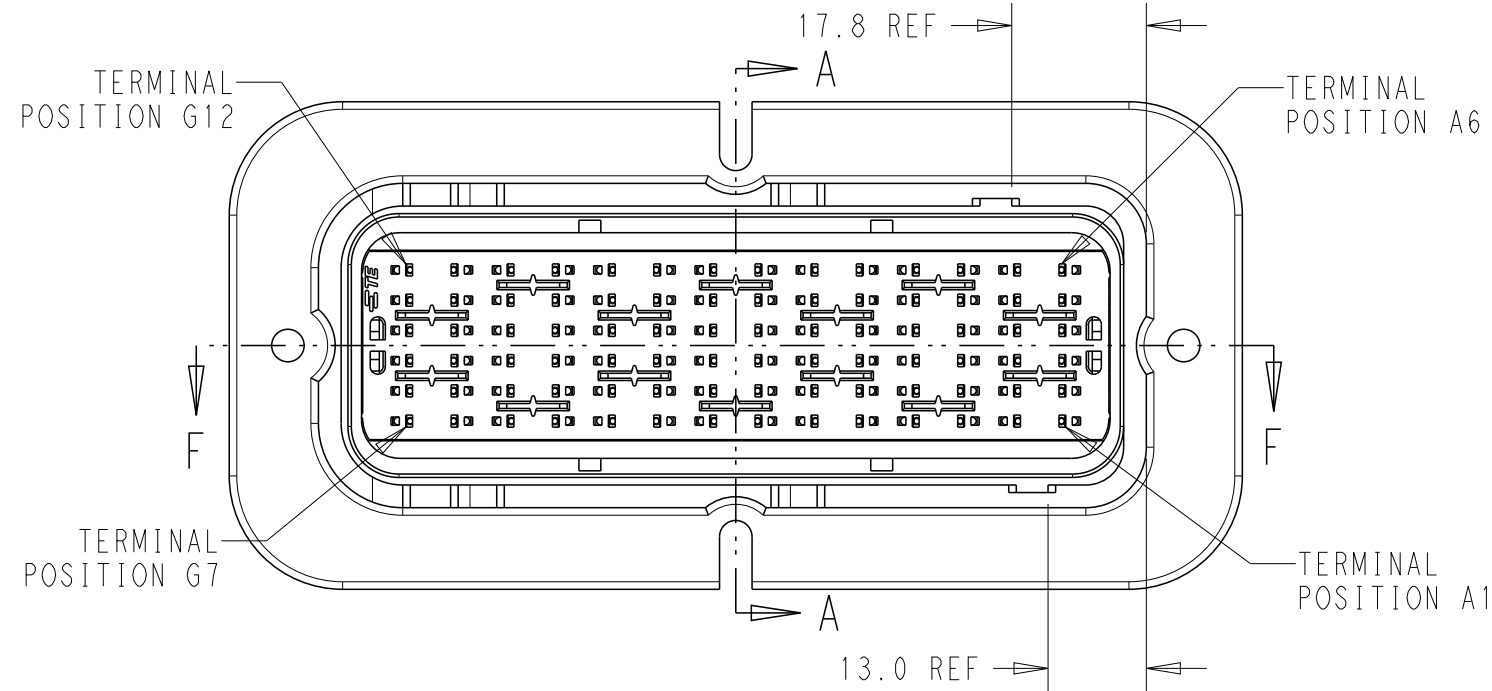
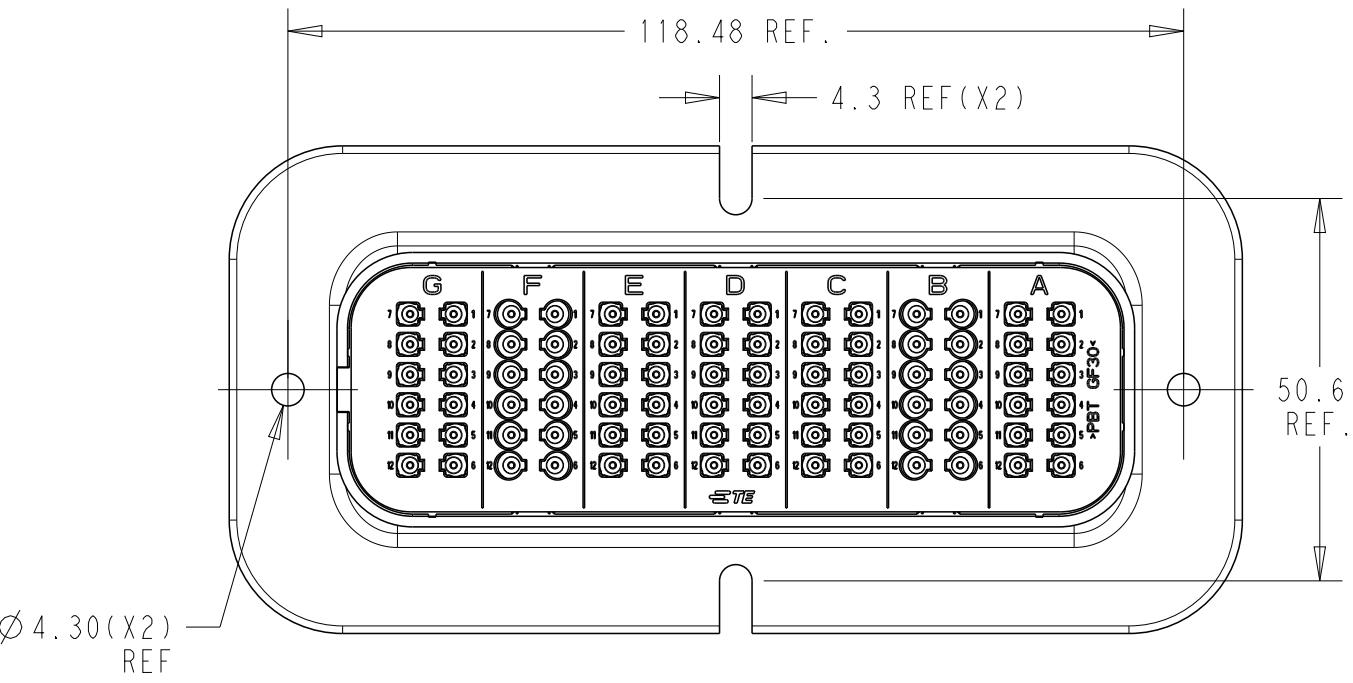


SRC2 84+0 (2.5) MAIN HOUSING BLACK



- NOTES:
- MATERIALS:
HOUSINGS: POLYESTER (PBT), GLASS FILLED, UL 94 HB
SEAL: SILICONE RUBBER
 - VARIATION OF SHADE WITHIN OR BETWEEN BATCHES, OR DISCOLORATION IS ACCEPTABLE
 - MX150 BLADE TERMINALS TO BE USED WITH THESE ASSEMBLIES IN ALL CAVITIES, CRIMPED WITH CABLE INSULATION OUTER DIAMETER IN THE RANGE 1.5mm TO 2.7mm
 - SRC BLADE TERMINALS MAY BE USED WITH THESE ASSEMBLIES IN CAVITIES B AND F, CRIMPED WITH 2.5mm² (13AWG) CABLE INSULATION OUTER DIAMETER IN THE RANGE 2.7mm TO 3.0mm
 - PACKAGING SPECIFICATION: TEC-107-160003-02
 - THIS SHEET: 2500025-1 (OLD PN 937928425) (84+0 2.5) OPTION MATES WITH SRC2 PIN 2.5 RECEPTACLE HOUSING ASSEMBLY (BLACK) PN 2500009-1 (OLD PN 932878425)
 - FLANGE GASKET OPTION: REFER TO 2500032-1
 - SUGGESTED DIMENSIONS FOR FLAT PLATE. CUSTOMER SHOULD VERIFY FIT IN THEIR OWN APPLICATION. ALL DIMENSIONS SYMMETRIC ABOUT CENTERLINES.
 - CLEARANCE FOR M4 COUNTERSUNK HEADS RECOMMENDED IN THESE HOLES.
 - PRESENCE OF TE LOGO OPTIONAL ON REAR COVER, FRONT COVER & HOUSING.

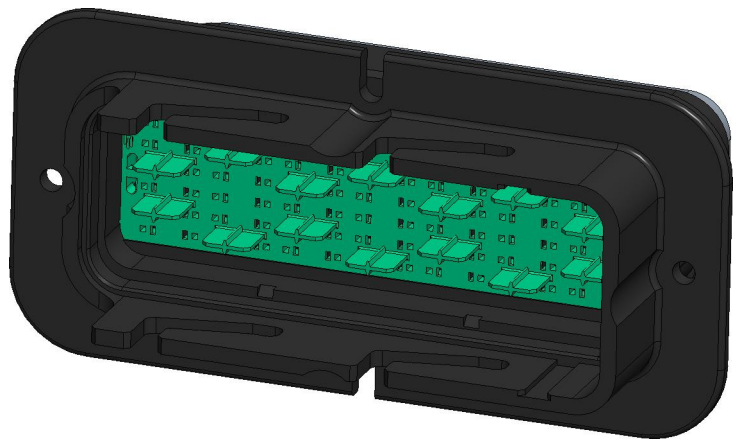


ACCEPTABLE CABLE INSULATION Ø RANGES (mm) - NOTE 3 & 4
(COMBINATIONS OF CABLES PER NOTES 3 & 4 ALLOWED IN B & F)

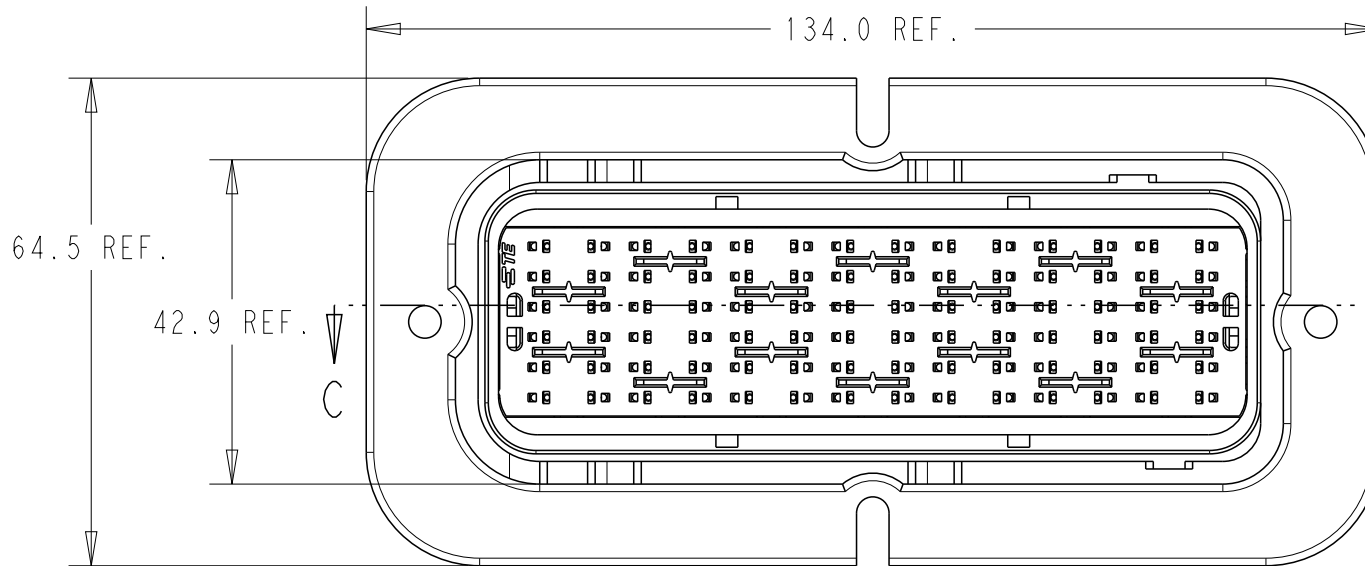
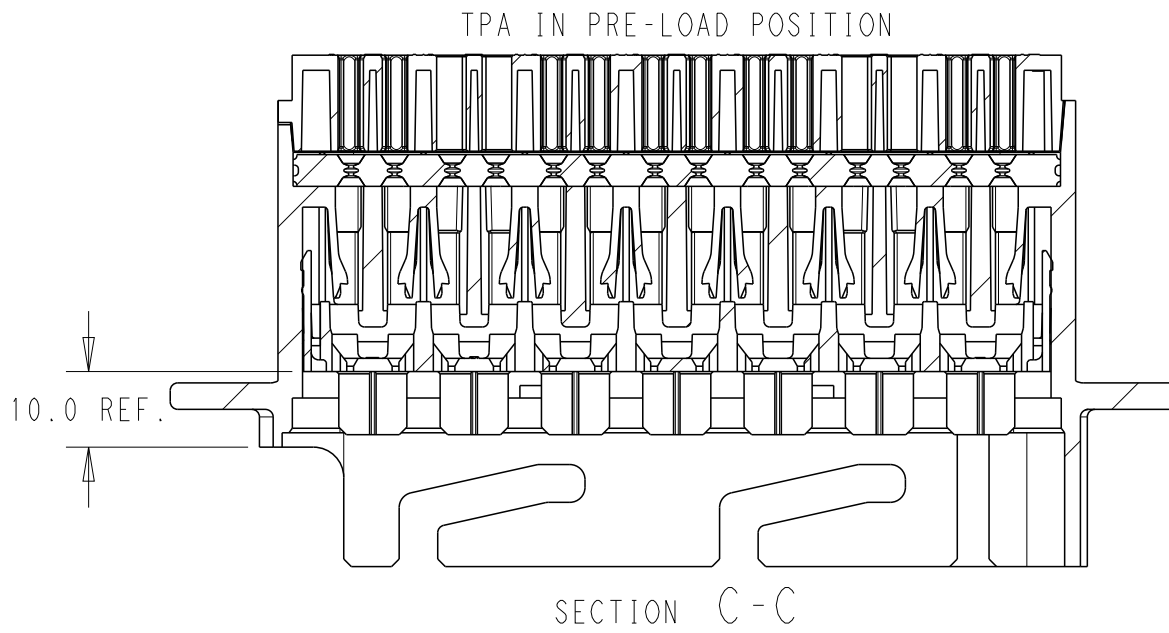
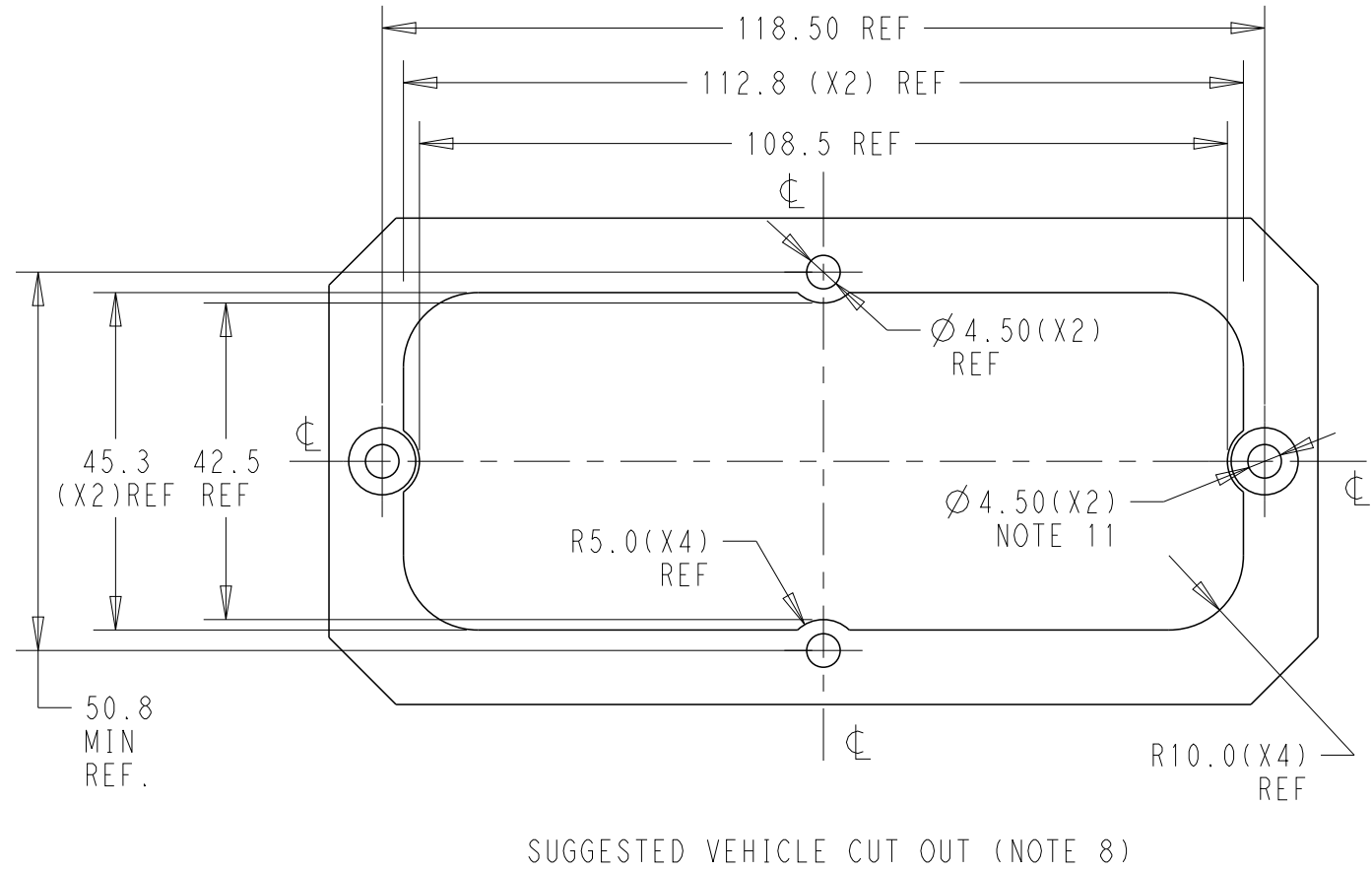
CAVITY SET

| G | F | E | D | C | B | A |
|-----------|-----------|-----------|-----------|-----------|-----------|-----------|
| 1.5 - 2.7 | 1.5 - 3.0 | 1.5 - 2.7 | 1.5 - 2.7 | 1.5 - 2.7 | 1.5 - 3.0 | 1.5 - 2.7 |

| No. | DESCRIPTION | QTY. | COLOR |
|------------------|-----------------------|------|------------|
| 4 | MALE BACK SEAL | 1 | RUSTED RED |
| 3 | MALE REAR COVER | 1 | BLACK |
| 2 | MALE FRONT COVER(TPA) | 1 | GREEN |
| 1 | MALE HOUSING | 1 | BLACK |
| BILL OF MATERIAL | | | |



| REVISIONS | | | | | |
|-----------|-----|---------------|-----------|-----|------|
| P | LTR | DESCRIPTION | DATE | DWN | APVD |
| A3 | | ECO-20-009048 | 15JUL2020 | MHS | MT |
| B | | PCN-21-123224 | 23DEC2021 | DRK | AW |
| | | | | | |
| | | | | | |



| | |
|-----------|-----------|
| 937928425 | 2500025-1 |
| OLD P/N | PART NO |

| | | | | | | |
|--|--|------------------------------------|--|--|-------------------------|---------------|
| THIS DRAWING IS A CONTROLLED DOCUMENT. | | DWN MANOHAR H S 15JUL2020 | TE Connectivity | | | |
| DIMENSIONS: | | CHK M TRULL 15JUL2020 | | | | |
| mm | | APVD M TRULL 15JUL2020 | NAME SRC2 84 PIN MALE BLADE HSG ASSY 2.5 | | | |
| | | PRODUCT SPEC TEC-108-160018 | SIZE A2 | | | |
| | | APPLICATION SPEC TEC-114-160015 | | | | |
| MATERIAL | | WEIGHT | CAGE CODE 00779 | | DRAWING NO C-2500025 | RESTRICTED TO |
| - | | - | SCALE 5:1 | | SHEET 1 OF 1 | REV B |
| - | | - | CUSTOMER DRAWING | | | |