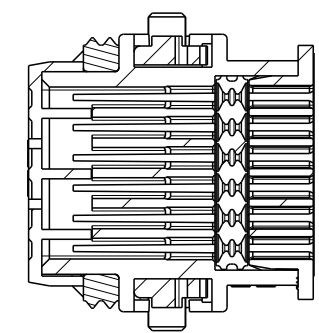
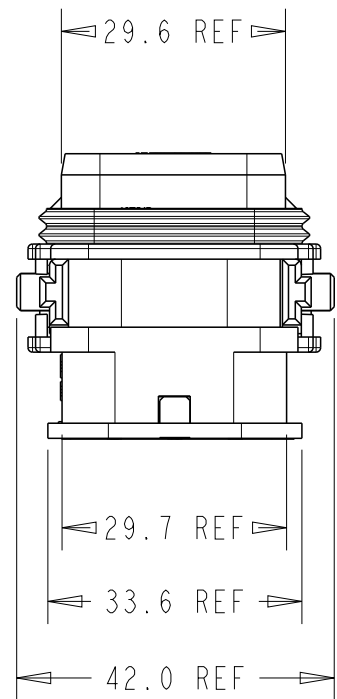
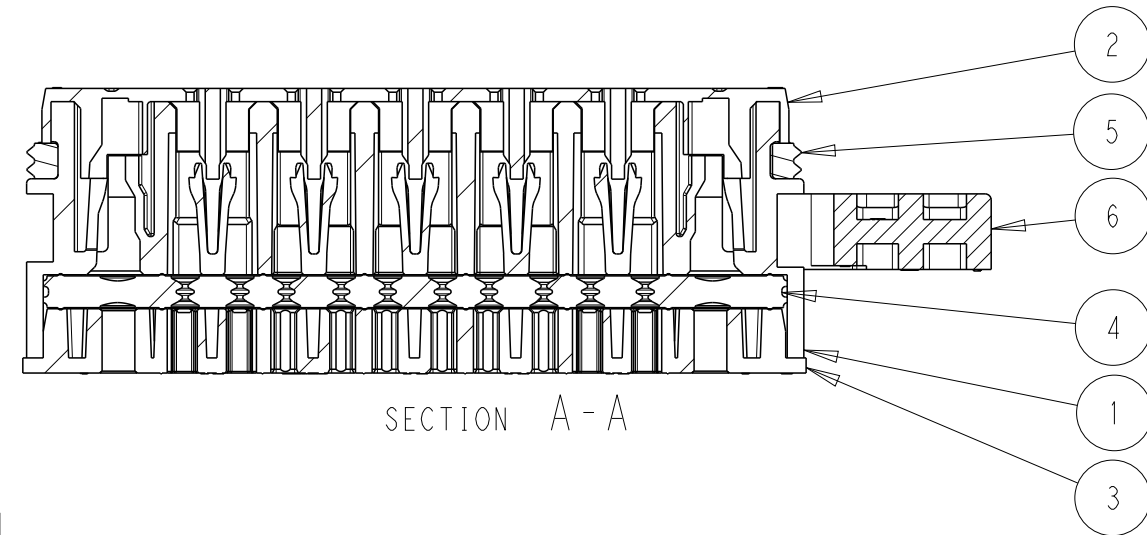
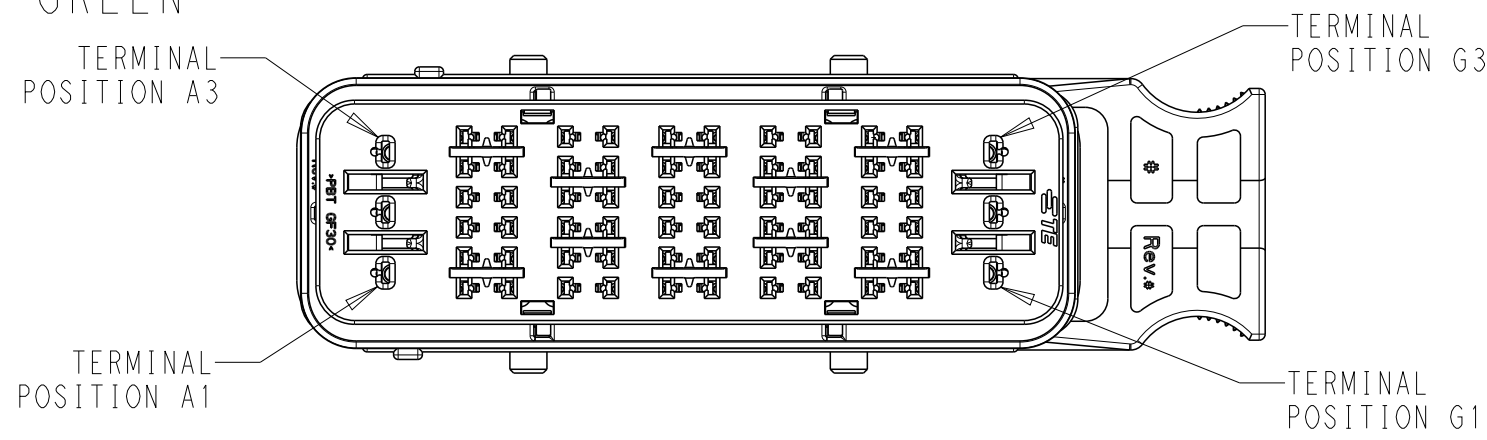
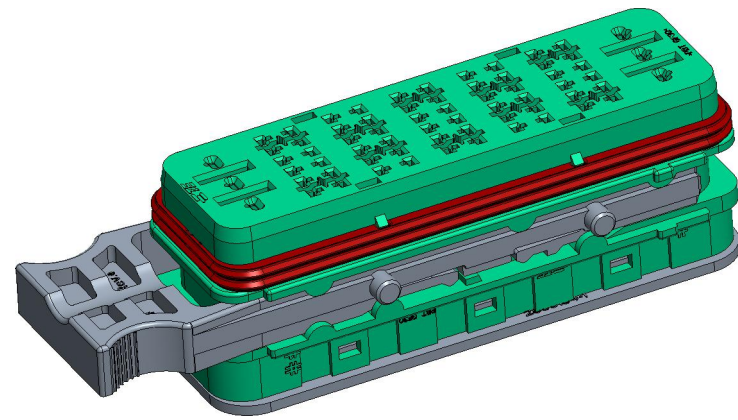
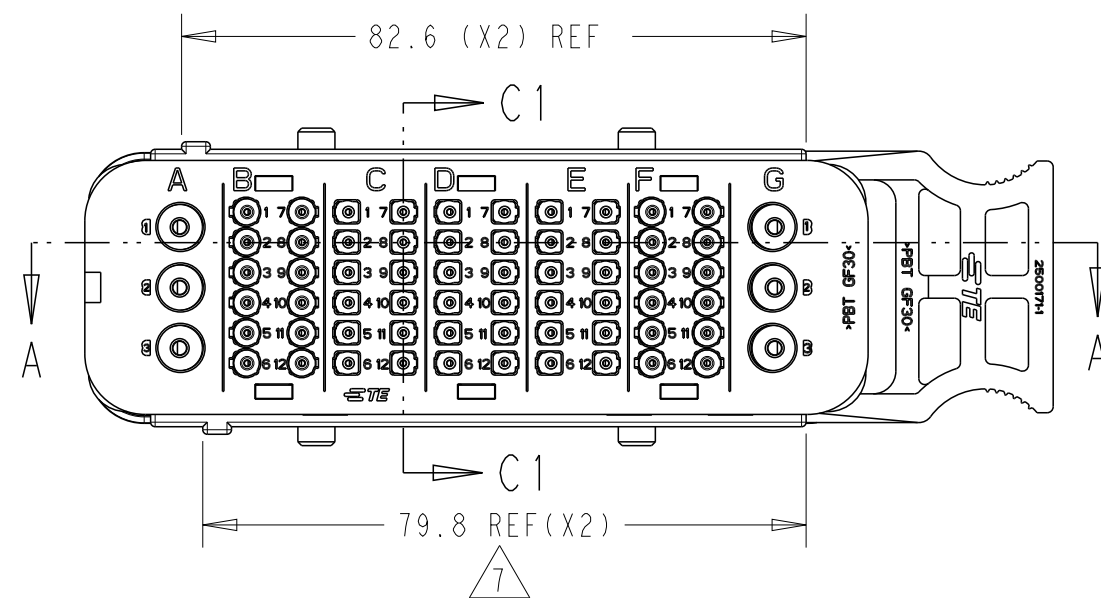
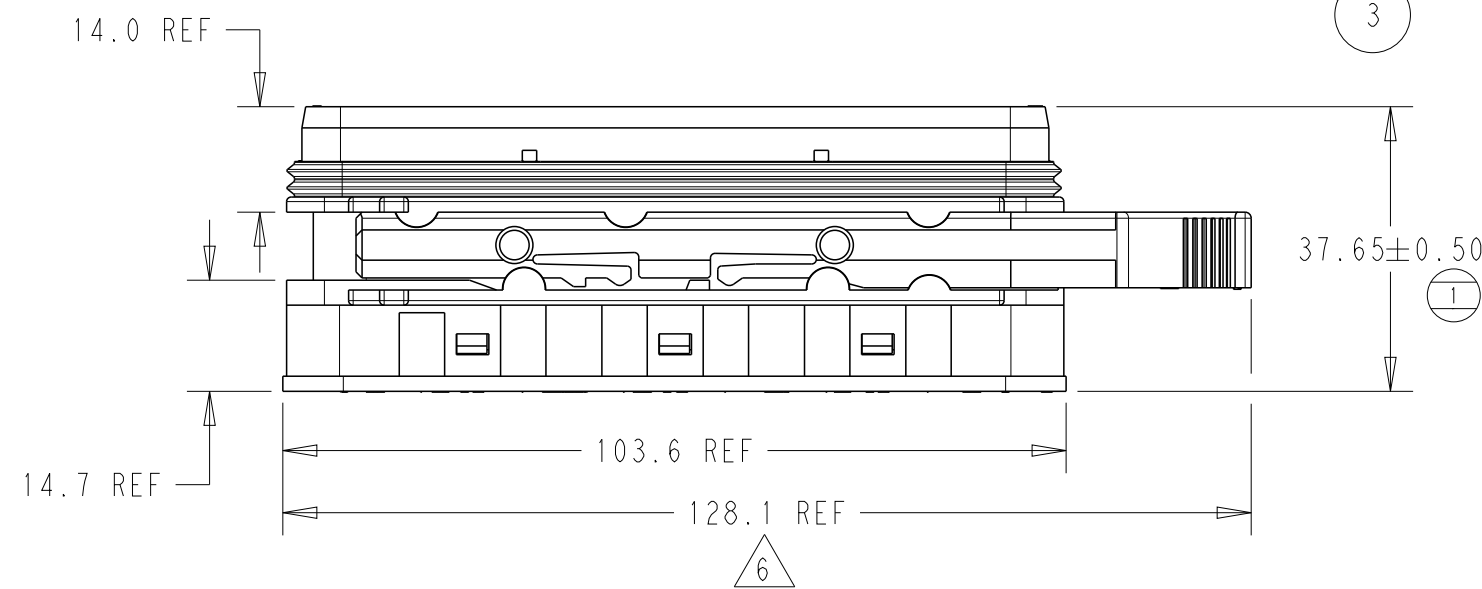


SRC POWER 60+6AG (2.5) MAIN HOUSING GREEN

TPA IN FULL-LOCK (AS SHIPPED) POSITION  
AND LATCH IN PARTIALLY OPEN POSITION



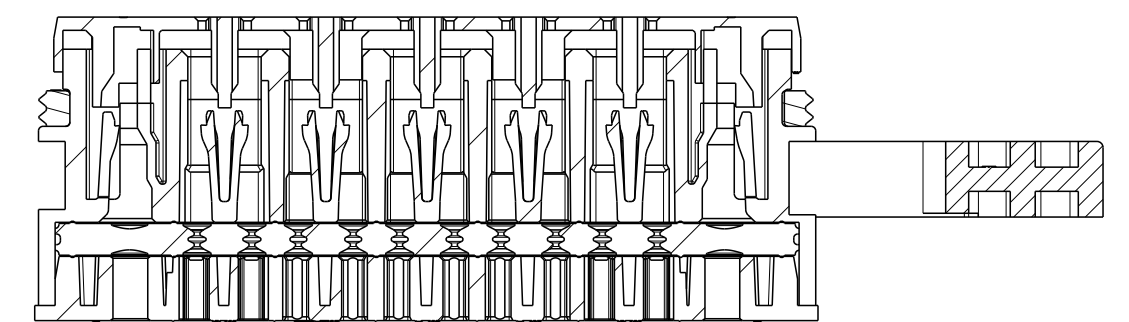
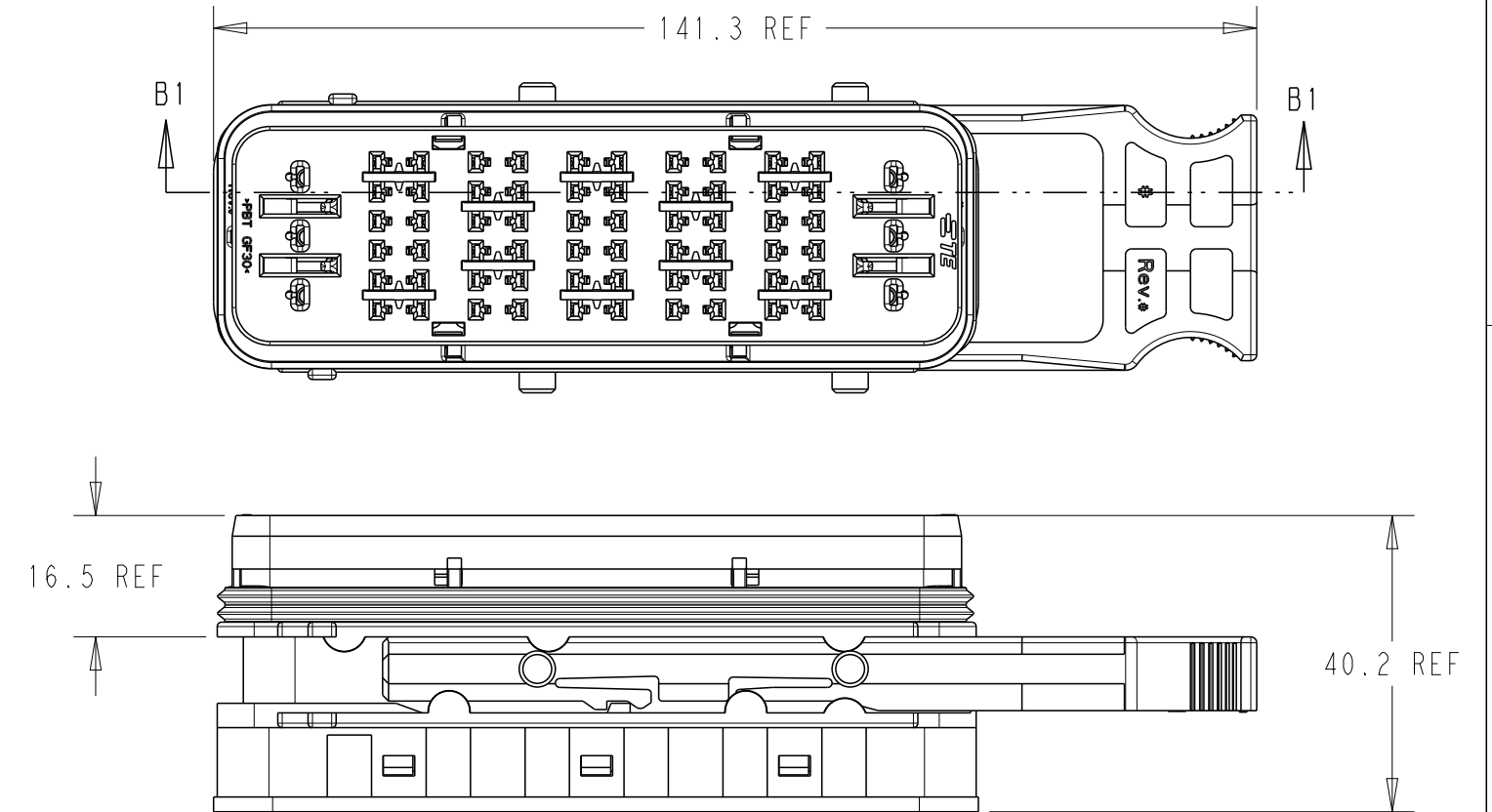
SECTION C1-C1



REVISIONS

P	LTR	DESCRIPTION	DATE	DWN	APVD
A3		ECO-20-009048	15JUL2020	MHS	MT
B		PCN-21-123224	23DEC2021	DRK	AW

TPA IN PRE\_LOAD POSITION  
AND LATCH IN OPEN POSITION



SECTION B1-B1


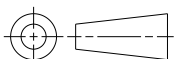
NOTES:

1. MATERIALS:  
HOUSINGS: POLYESTER (PBT), GLASS FILLED, UL 94 HB  
SEAL: SILICONE RUBBER
2. VARIATION OF SHADE WITHIN OR BETWEEN BATCHES, OR DISCOLORATION IS ACCEPTABLE
3. MX150 RECEPTACLE TERMINALS TO BE USED WITH THESE ASSEMBLIES IN CAVITIES B,C,D, E AND F, CRIMPED WITH CABLE INSULATION OUTER DIAMETER IN THE RANGE 1.5mm TO 2.7mm
4. SRC RECEPTACLE TERMINALS MAY BE USED WITH THESE ASSEMBLIES IN CAVITIES B AND F CRIMPED WITH 2.5mm2 (13AWG) CABLE INSULATION OUTER DIAMETER IN THE RANGE 2.7mm TO 3.0mm
5. MX150L RECEPTACLE TERMINALS TO BE USED WITH THESE ASSEMBLIES IN CAVITIES A AND G, CRIMPED WITH CABLE INSULATION OUTER DIAMETER IN THE RANGE 3.0mm TO 5.0mm
6. PACKAGING SPECIFICATION: TEC-107-160003-02, LATCH SHIPPED IN PARTIALLY OPEN POSITION
7. MATES WITH SRC 60+6AG PIN 2.5 BLADE HOUSING ASSEMBLY (GREEN) PN 2500028-1 (OLD PN 938506025)
8. CONDUIT INTERFACE OPTIONS REFER TO 2500034
9. PRESENCE OF TE CONNECTIVITY LOGO OPTIONAL ON FRONT COVER,REAR COVER,SLIDING LATCH AND HOUSING.

No.	DESCRIPTION	QTY.	COLOR
6	SLIDING LATCH	1	BLACK
5	FEMALE FRONT SEAL	1	RED
4	FEMALE BACK SEAL	1	LIGHT BLUE
3	FEMALE REAR COVER	1	BLACK
2	FEMALE FRONT COVER	1	GREEN
1	FEMALE HOUSING	1	GREEN
BILL OF MATERIAL			

ACCEPTABLE CABLE INSULATION Ø RANGES (mm) - NOTE 3,4 & 5 (COMBINATIONS OF CABLES PER NOTES 3 & 4 ALLOWED IN B & F)						
CAVITY SET						
A	B	C	D	E	F	G
3.0 - 5.0	1.5 - 3.0	1.5 - 2.7	1.5 - 2.7	1.5 - 2.7	1.5 - 3.0	3.0 - 5.0

938496025	2500013-1
OLD P/N	PART NO

THIS DRAWING IS A CONTROLLED DOCUMENT.		DWN MANOHAR H S 15JUL2020	 TE Connectivity					
DIMENSIONS: mm		CHK M TRULL 15JUL2020						
		APVD M TRULL 15JUL2020	NAME SRC2 FEMALE 60+6AG 2.5 MIXED POWER GREEN -					
		PRODUCT SPEC TEC-108-160018						
TOLERANCES UNLESS OTHERWISE SPECIFIED:		APPLICATION SPEC TEC-114-160015	SIZE	CAGE CODE	DRAWING NO	RESTRICTED TO		
MATERIAL		WEIGHT	A2	00779	C-2500013	-		
FINISH		CUSTOMER DRAWING			SCALE	SHEET	OF	REV
-		-	5:1			1	1	B
-		-						