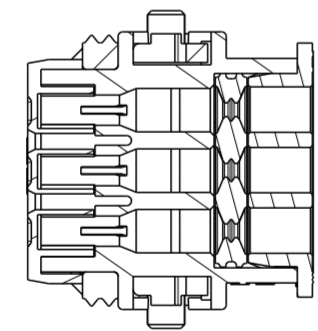
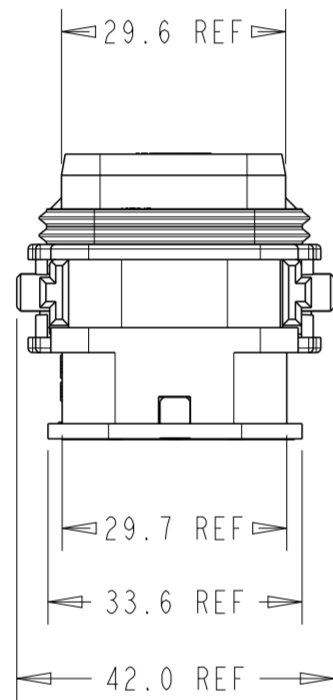
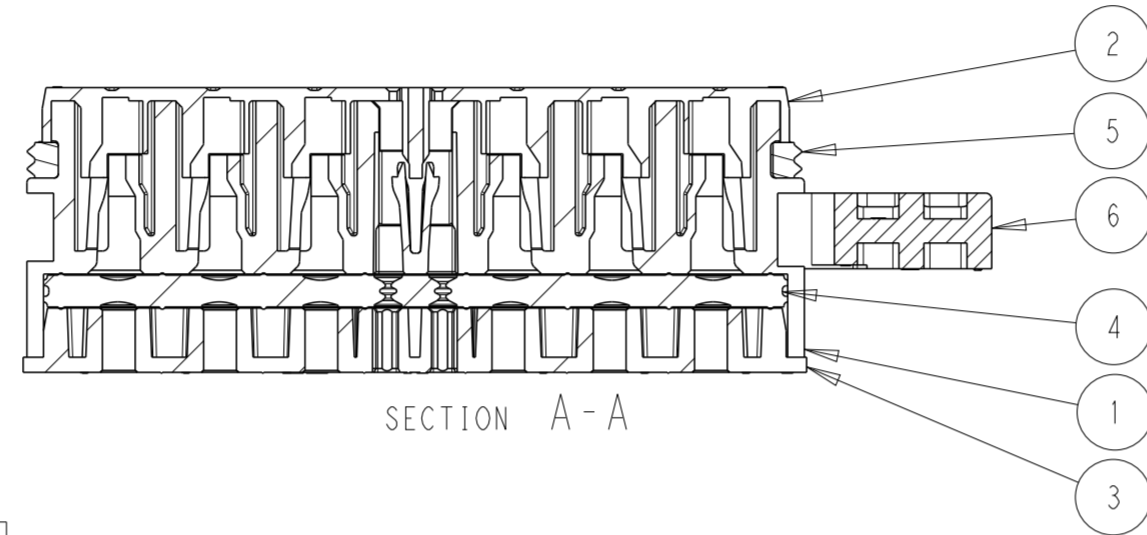
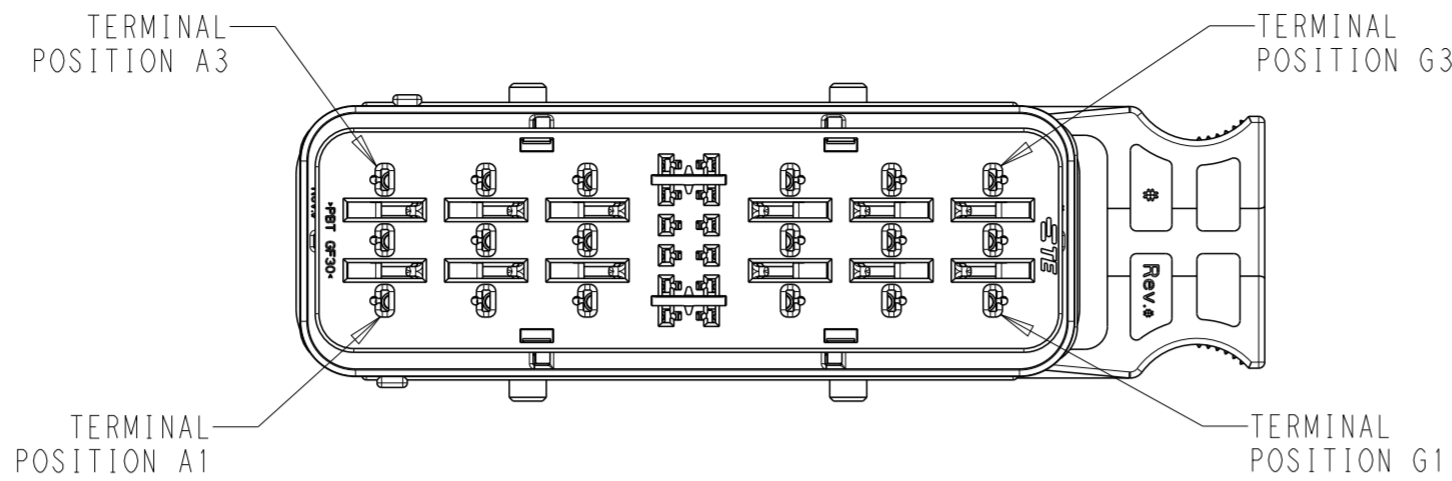
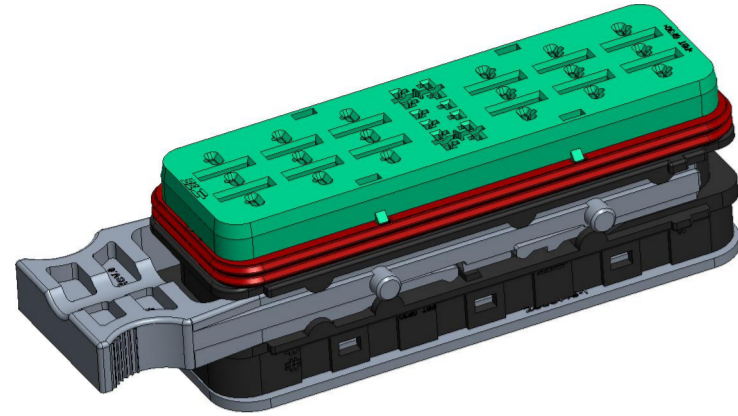
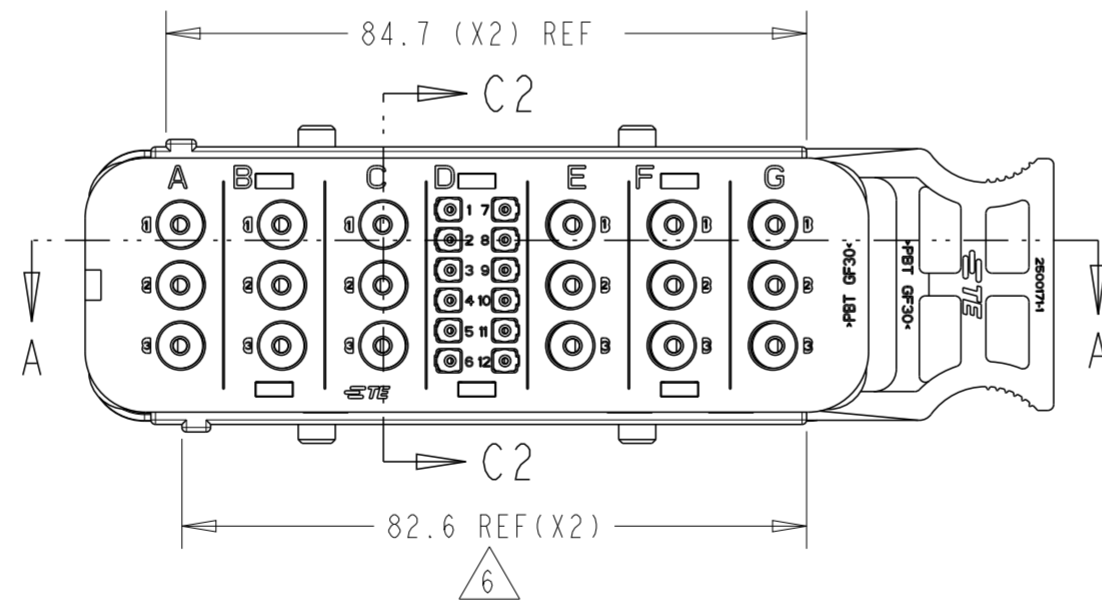


SRC 12+18ABCEFG MAIN HOUSING BLACK

TPA IN FULL-LOCK (AS SHIPPED) POSITION
AND LATCH IN PARTIALLY OPEN POSITION

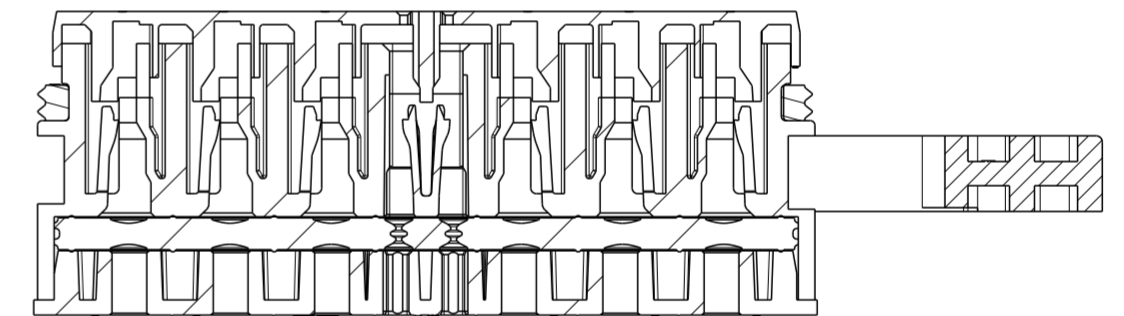
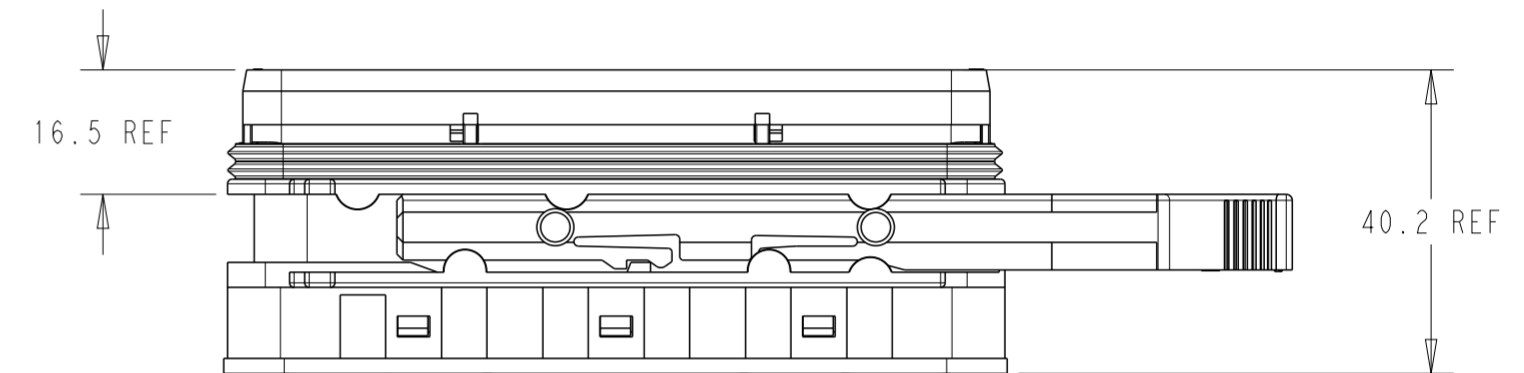
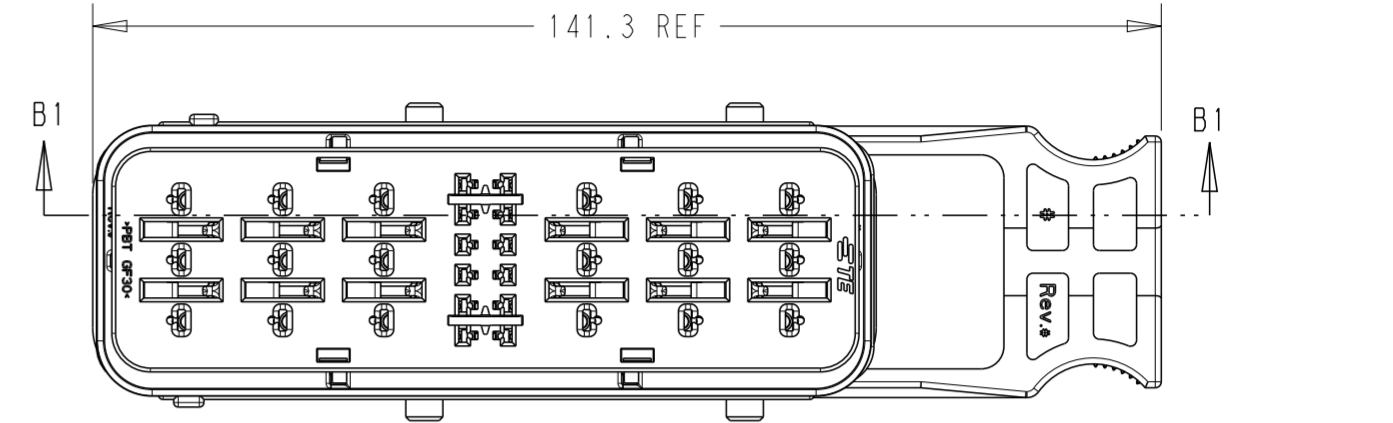


SECTION C2-C2



REVISIONS					
P	LTR	DESCRIPTION	DATE	DWN	APVD
A3		ECO-20-009048	15JUL2020	MHS	MT
B		PCN-21-123224	23DEC2021	DRK	AW

TPA IN PRE_LOAD POSITION
AND LATCH IN OPEN POSITION




SECTION B1-B1

- NOTES:
- MATERIALS:
HOUSINGS: HOUSINGS: POLYESTER (PBT), GLASS FILLED, UL 94 HB
SEAL: SILICONE RUBBER
 - VARIATION OF SHADE WITHIN OR BETWEEN BATCHES, OR DISCOLORATION IS ACCEPTABLE
 - MX150 RECEPTACLE TERMINALS TO BE USED WITH THESE ASSEMBLIES IN CAVITY D, CRIMPED WITH CABLE INSULATION OUTER DIAMETER IN THE RANGE 1.5mm TO 2.7mm
 - MX150L RECEPTACLE TERMINALS TO BE USED WITH THESE ASSEMBLIES IN CAVITIES A, B, C, E, F, AND G, CRIMPED WITH CABLE INSULATION OUTER DIAMETER IN THE RANGE 3.0mm TO 5.0mm
- 5 PACKAGING SPECIFICATION: TEC-107-160003-02, LATCH SHIPPED IN PARTIALLY OPEN POSITION
- 6 MATES WITH SRC 12+18ABCEFG POWER BLADE HOUSING ASSEMBLY (BLACK) PN 2500017-1 (OLD PN 937921218)
7. CONDUIT INTERFACE OPTIONS REFER TO 2500034
8. PRESENCE OF TE CONNECTIVITY LOGO OPTIONAL ON FRONT COVER, REAR COVER, SLIDING LATCH AND HOUSING.

6	SLIDING LATCH	1	BLACK
5	FEMALE FRONT SEAL	1	RED
4	FEMALE BACK SEAL	1	LIGHT BLUE
3	FEMALE REAR COVER	1	BLACK
2	FEMALE FRONT COVER	1	GREEN
1	FEMALE HOUSING	1	BLACK
No.	DESCRIPTION	QTY.	COLOR
BILL OF MATERIAL			

ACCEPTABLE CABLE INSULATION Ø RANGES (mm) - NOTE 3 & 4						
CAVITY SET						
A	B	C	D	E	F	G
3.0 - 5.0	3.0 - 5.0	3.0 - 5.0	1.5 - 2.7	3.0 - 5.0	3.0 - 5.0	3.0 - 5.0

850841218	2500001-1
OLD P/N	PART NO

THIS DRAWING IS A CONTROLLED DOCUMENT.		DWN MANOHAR H S 15JUL2020	 TE Connectivity			
DIMENSIONS: mm		CHK M TRULL 15JUL2020				
TOLERANCES UNLESS OTHERWISE SPECIFIED:		APVD M TRULL 15JUL2020	NAME SRC Pwr 12+18ABCEFG FEMALE RECEPTACLE HSG ASSY			
0 PLC ±		PRODUCT SPEC TEC-108-160018	SIZE A2			
1 PLC ±		APPLICATION SPEC TEC-114-160015	CAGE CODE 00779			
2 PLC ±		WEIGHT -	DRAWING NO C-2500001			
3 PLC ±		CUSTOMER DRAWING	RESTRICTED TO -			
4 PLC ±			SCALE 5:1			
ANGLES ±			SHEET 1 OF 1			
FINISH -			REV B			