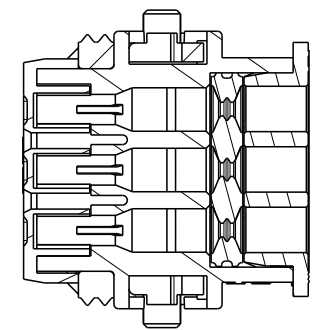
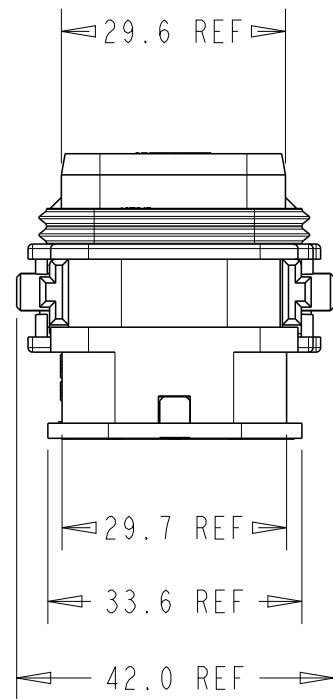
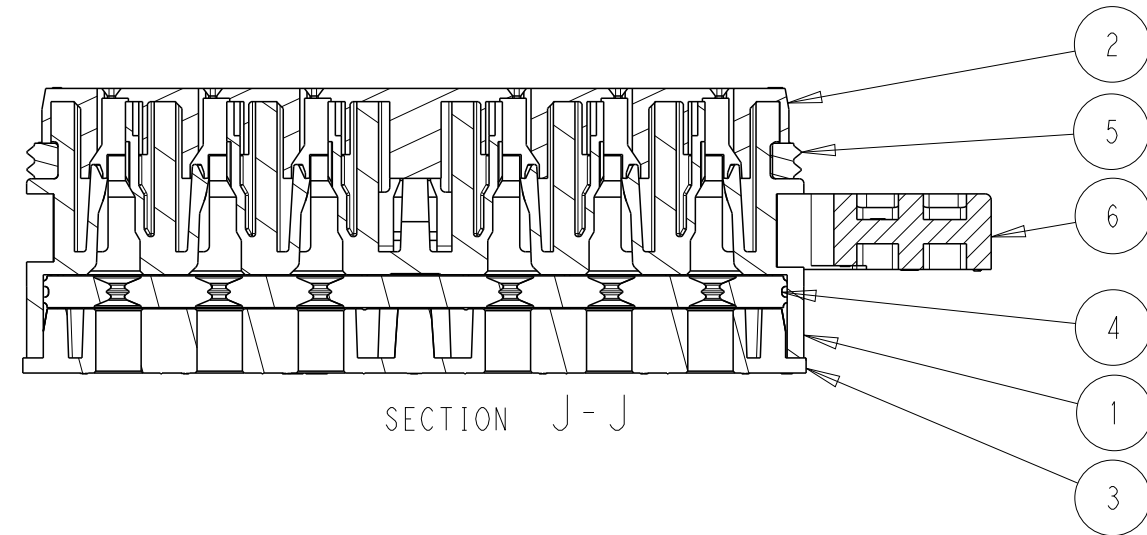
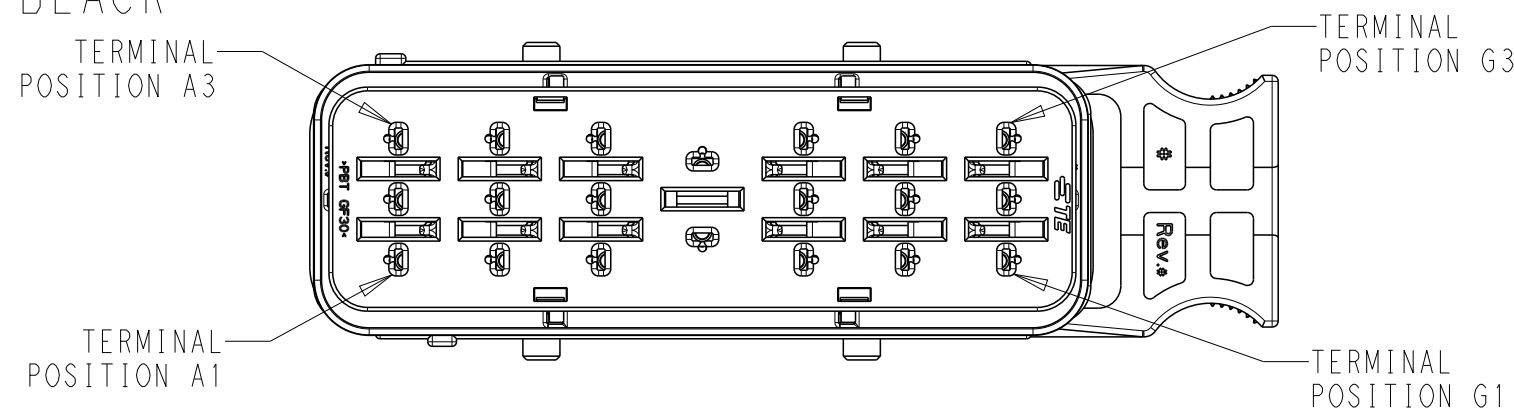
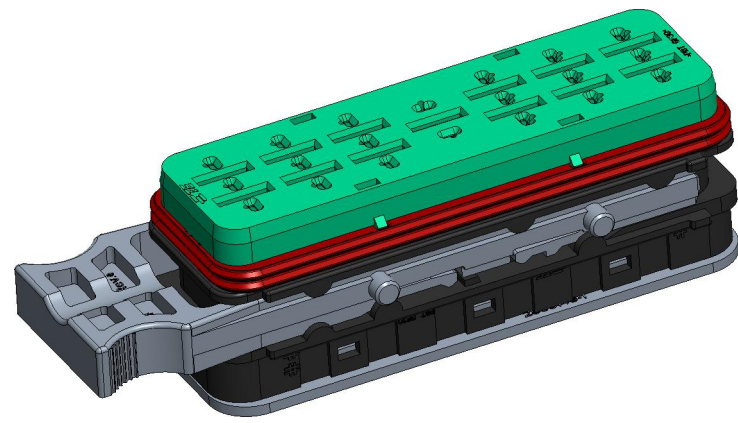
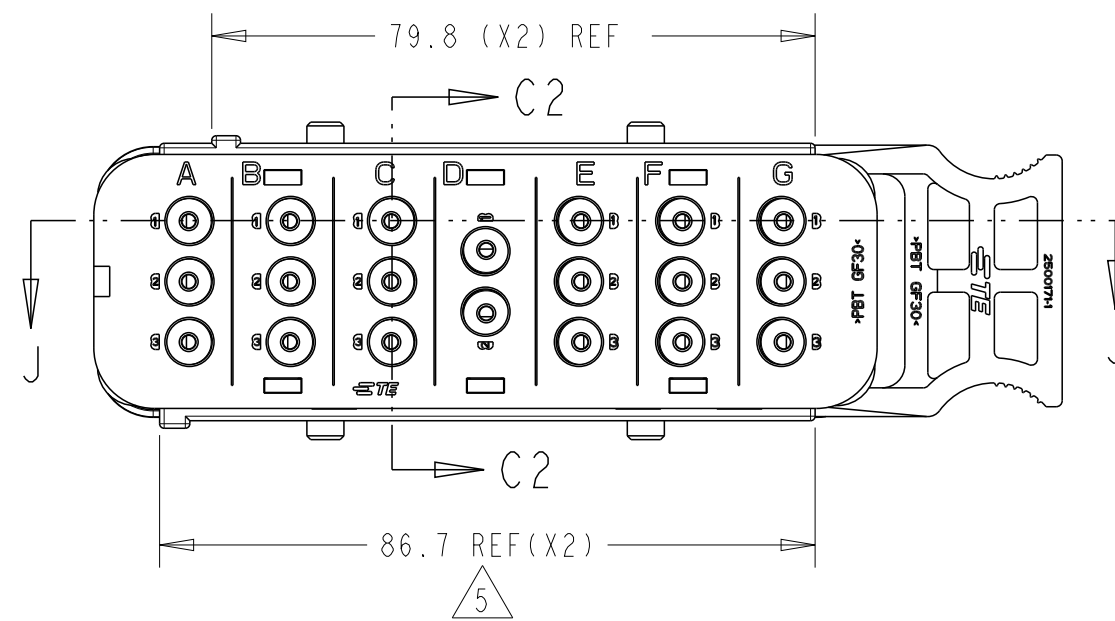
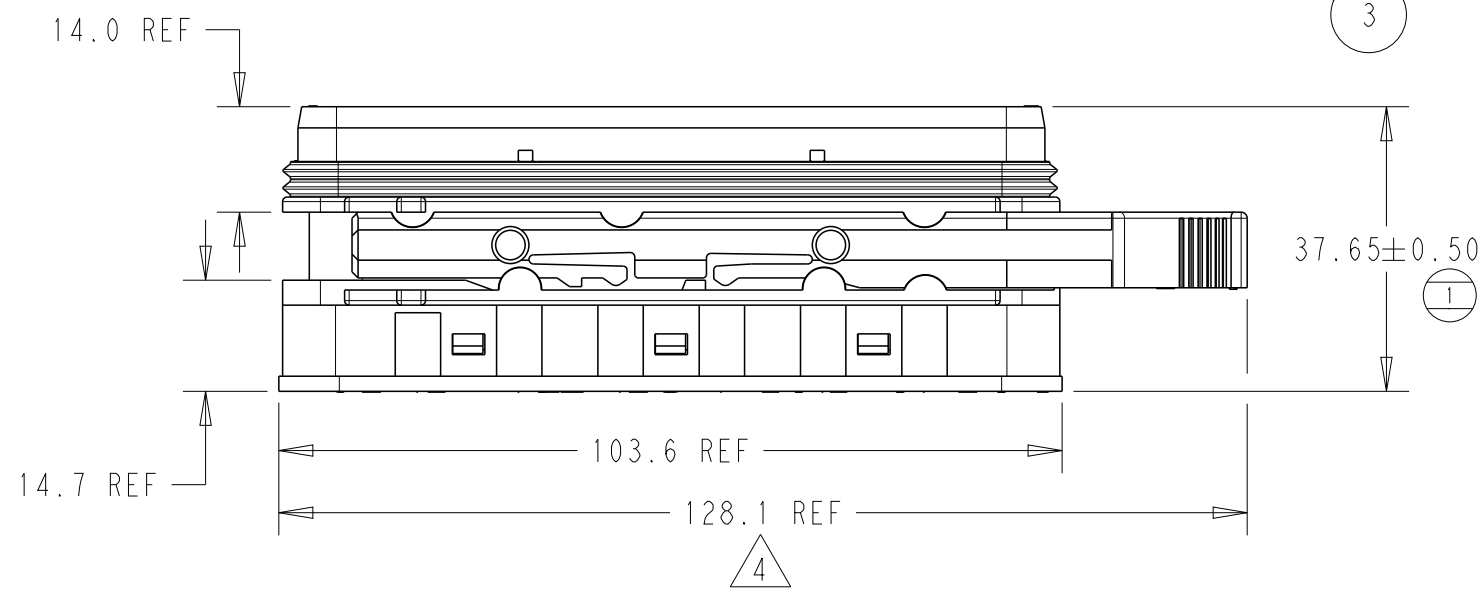


SRC POWER 0+20ABCDEFGH MAIN HOUSING BLACK

TPA IN FULL-LOCK (AS SHIPPED) POSITION
AND LATCH IN PARTIALLY OPEN POSITION



SECTION C2-C2



ACCEPTABLE CABLE INSULATION Ø RANGES (mm) - NOTE 3						
CAVITY SET						
A	B	C	D	E	F	G
3.0 - 5.0	3.0 - 5.0	3.0 - 5.0	3.0 - 5.0	3.0 - 5.0	3.0 - 5.0	3.0 - 5.0

6	SLIDING LATCH	1	BLACK
5	FEMALE FRONT SEAL	1	RED
4	FEMALE BACK SEAL	1	LIGHT BLUE
3	FEMALE REAR COVER	1	BLACK
2	FEMALE FRONT COVER	1	GREEN
1	FEMALE HOUSING	1	BLACK
No.	DESCRIPTION	QTY.	COLOR
BILL OF MATERIAL			

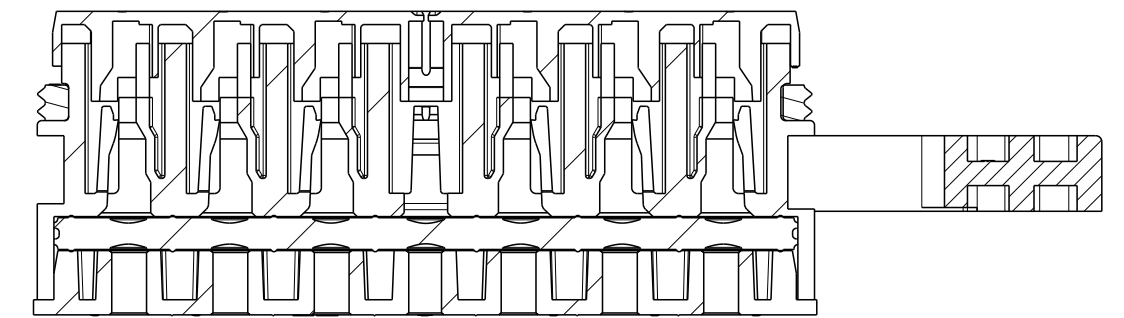
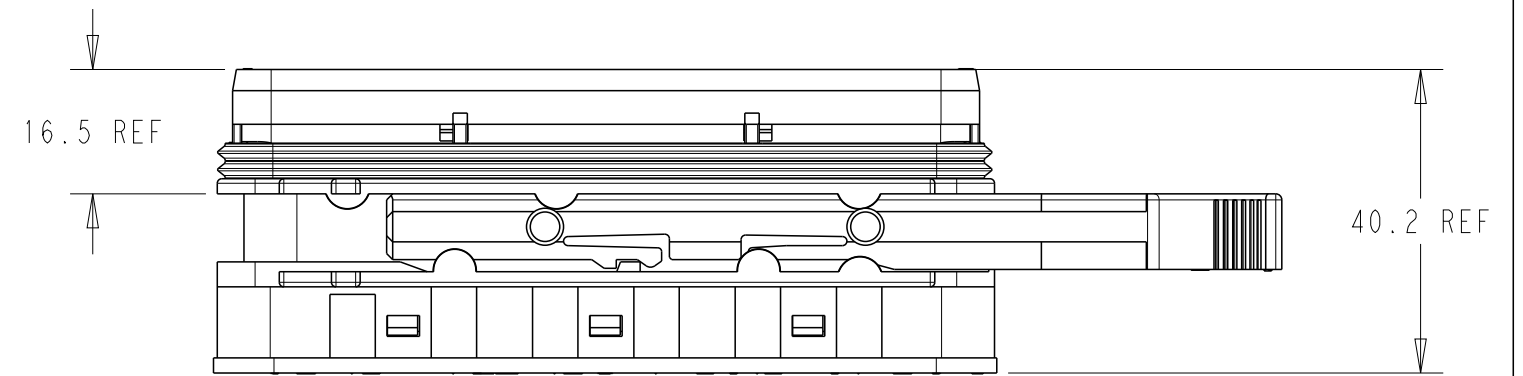
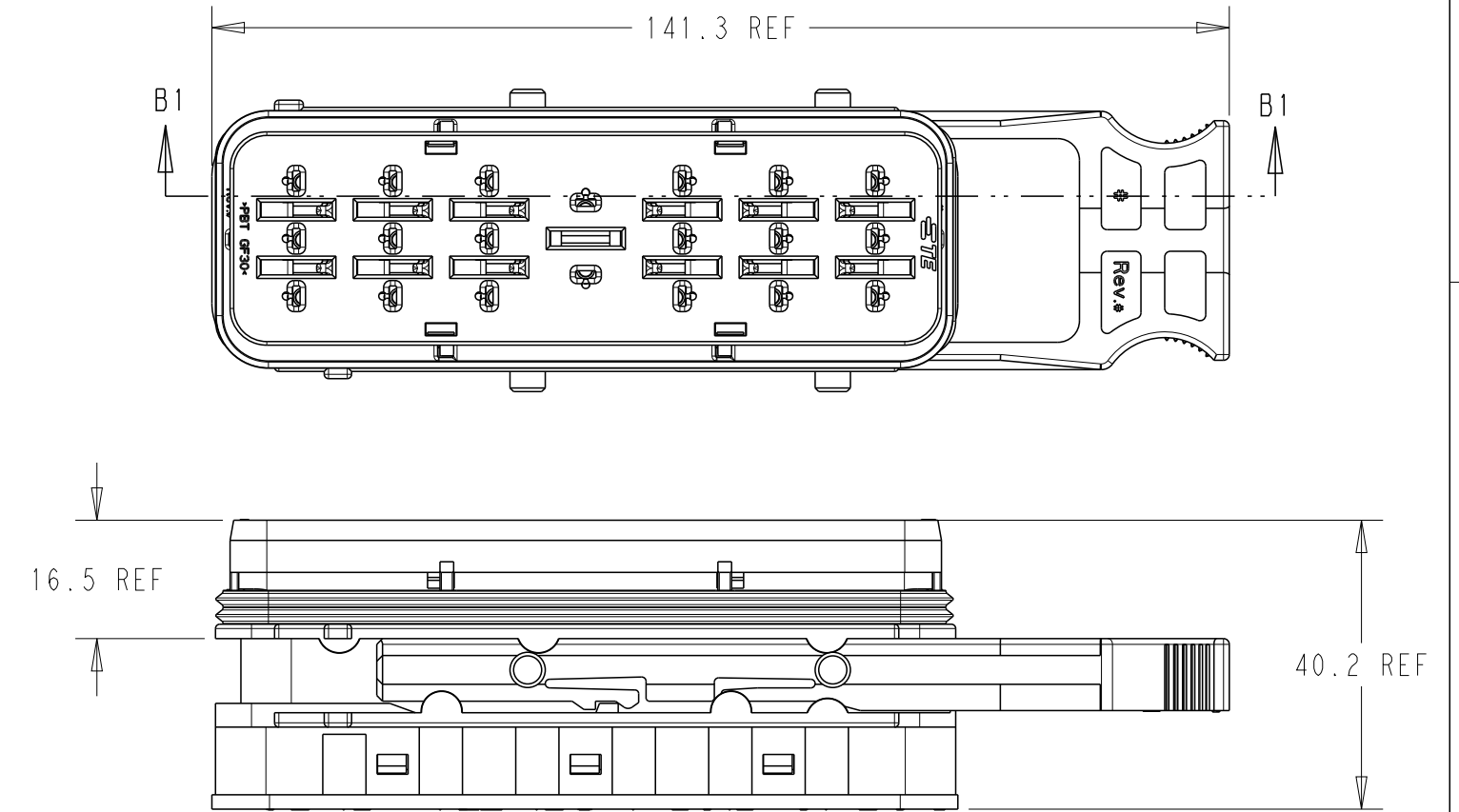
850840020	2500000-1
OLD P/N	PART NO

- NOTES:
- MATERIALS:
HOUSINGS: POLYESTER (PBT), GLASS FILLED, UL 94 HB
SEAL: SILICONE RUBBER
 - VARIATION OF SHADE WITHIN OR BETWEEN BATCHES, OR DISCOLORATION IS ACCEPTABLE
 - MX150L RECEPTACLE TERMINALS TO BE USED WITH THESE ASSEMBLIES IN ALL CAVITIES, CRIMPED WITH CABLE INSULATION OUTER DIAMETER IN THE RANGE 3.0mm TO 5.0mm
 - PACKAGING SPECIFICATION: TEC-107-160003-02, LATCH SHIPPED IN PARTIALLY OPEN POSITION
 - MATES WITH SRC 0+20ABCDEFGH POWER BLADE HOUSING ASSEMBLY (BLACK) PN 2500016-1 (OLD PN 937920020)
 - CONDUIT INTERFACE OPTIONS REFER TO 2500034
 - PRESENCE OF TE CONNECTIVITY LOGO OPTIONAL ON FRONT COVER, REAR COVER, SLIDING LATCH & HOUSING.


REVISIONS

P	LTR	DESCRIPTION	DATE	DWN	APVD
A3		ECO-20-009048	15JUL2020	MHS	MT
B		PCN-21-123224	23DEC2021	DRK	AW

TPA IN PRE-LOAD POSITION
AND LATCH IN OPEN POSITION



SECTION B1-B1

THIS DRAWING IS A CONTROLLED DOCUMENT.		DWN MANOHAR H S 15JUL2020	 TE Connectivity			
DIMENSIONS: mm		CHK M TRULL 15JUL2020				
TOLERANCES UNLESS OTHERWISE SPECIFIED:		APVD M TRULL 15JUL2020	NAME SRC Pwr 0+20ABCDEFGH FEMALE RECEPTACLE HSG ASSY			
0 PLC 1 PLC 2 PLC 3 PLC 4 PLC ANGLES FINISH		PRODUCT SPEC TEC-108-160018 APPLICATION SPEC TEC-114-160015 WEIGHT -	SIZE A2		CAGE CODE 00779	DRAWING NO C-2500000
MATERIAL -		CUSTOMER DRAWING	RESTRICTED TO -		SCALE 5:1	
			SHEET 1 OF 1		REV B	