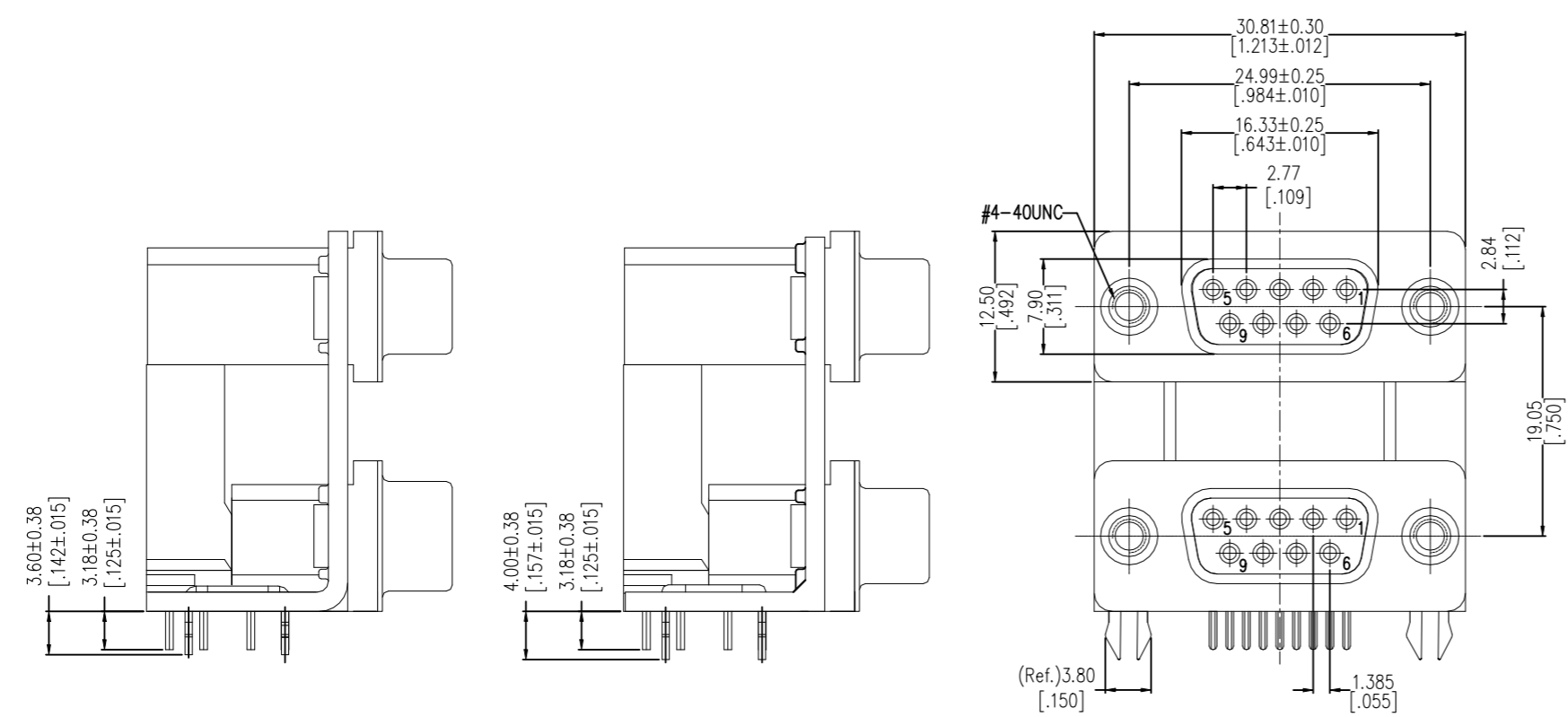


REVISIONS

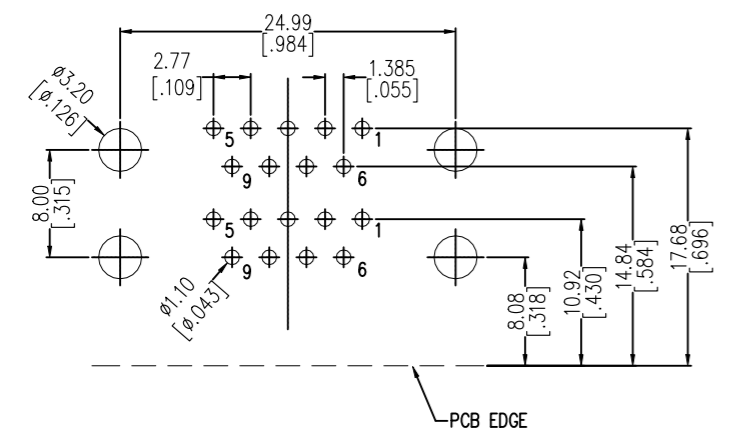
P	LTR	DESCRIPTION	DATE	DWN	APVD
	5	REVISED PER ECN-24-245660	19DEC2023	AP	JM

- NOTES: AS SHOWN 2454917-1
- Current Rating: 3.0A
 - Contact Resistance: 30mΩ Max
 - Withstand Voltage: 500V AC
 - Insulation Resistance: 1000MΩ Min
 - Operation Temperature: -55°C to 105°C
 - Insulator Material: PBT,G.F,UL94V-0
 - Contact Material: Copper Alloy
 - Contact Plating: Gold Flash on Contact Area
Bright Tin on Solder Area
Nickel underplated overall
 - Shell: SPCC,Ni Plated
 - Bracket: Zinc Alloy or SPCC,Ni Plated
 - Harpoon: SPCC,Tin Plated
 - Screw: Copper Alloy,Ni Plated
- Recommended Process:
Wave soldering,Peak temperature: 260±5°C,5S

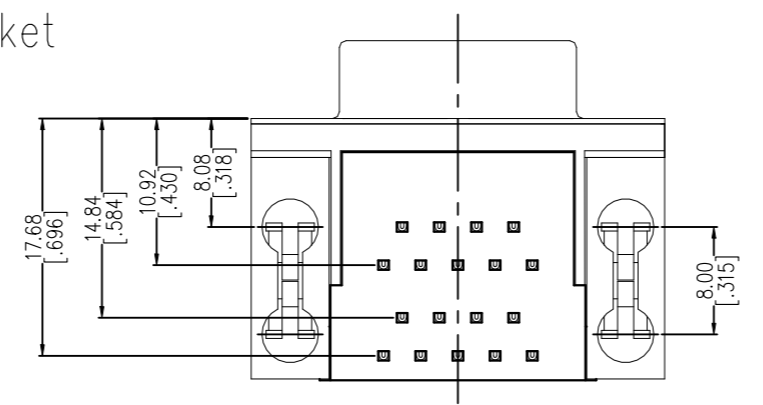


SPCC Alloy Bracket

Zinc Alloy Bracket



RECOMMENDED P.C.B LAYOUT (COMPONENT SIDE)(TOLERANCE:±0.05)



S.No.	Part No.	Pins	Packing	Up Port Type	Down Port Type	Bracket Material	Screw
1	2454917-1	9	Tray	Female	Female	SPCC Alloy	-
2	2454917-2	9	Tray	Female	Female	SPCC Alloy	H - 6.0
3	2454917-3	9	Tray	Male	Male	SPCC Alloy	-
4	2454917-4	9	Tray	Male	Male	SPCC Alloy	H - 6.0
5	2454917-5	15	Tray	Female	Female	SPCC Alloy	-
6	2454917-6	15	Tray	Female	Female	SPCC Alloy	H - 6.0
7	2454917-7	25	Tray	Female	Female	Zinc Alloy	-
8	2454917-8	25	Tray	Female	Female	Zinc Alloy	H - 6.0
9	2454917-9	37	Tray	Female	Female	Zinc Alloy	-
10	1-2454917-1	37	Tray	Female	Female	Zinc Alloy	H - 6.0
11	1-2454917-2	15	Tray	Male	Male	Zinc Alloy	-
12	1-2454917-3	15	Tray	Male	Male	Zinc Alloy	H - 6.0
13	1-2454917-4	25	Tray	Male	Male	Zinc Alloy	-
14	1-2454917-5	25	Tray	Male	Male	Zinc Alloy	H - 6.0
15	1-2454917-6	37	Tray	Male	Male	Zinc Alloy	-
16	1-2454917-7	37	Tray	Male	Male	Zinc Alloy	H - 6.0

THIS DRAWING IS A CONTROLLED DOCUMENT.

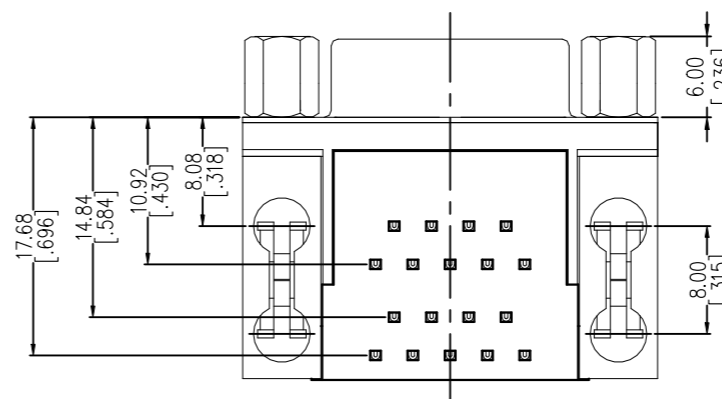
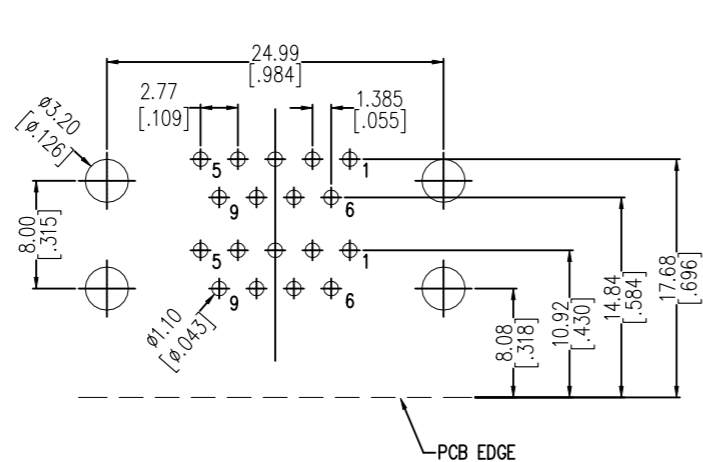
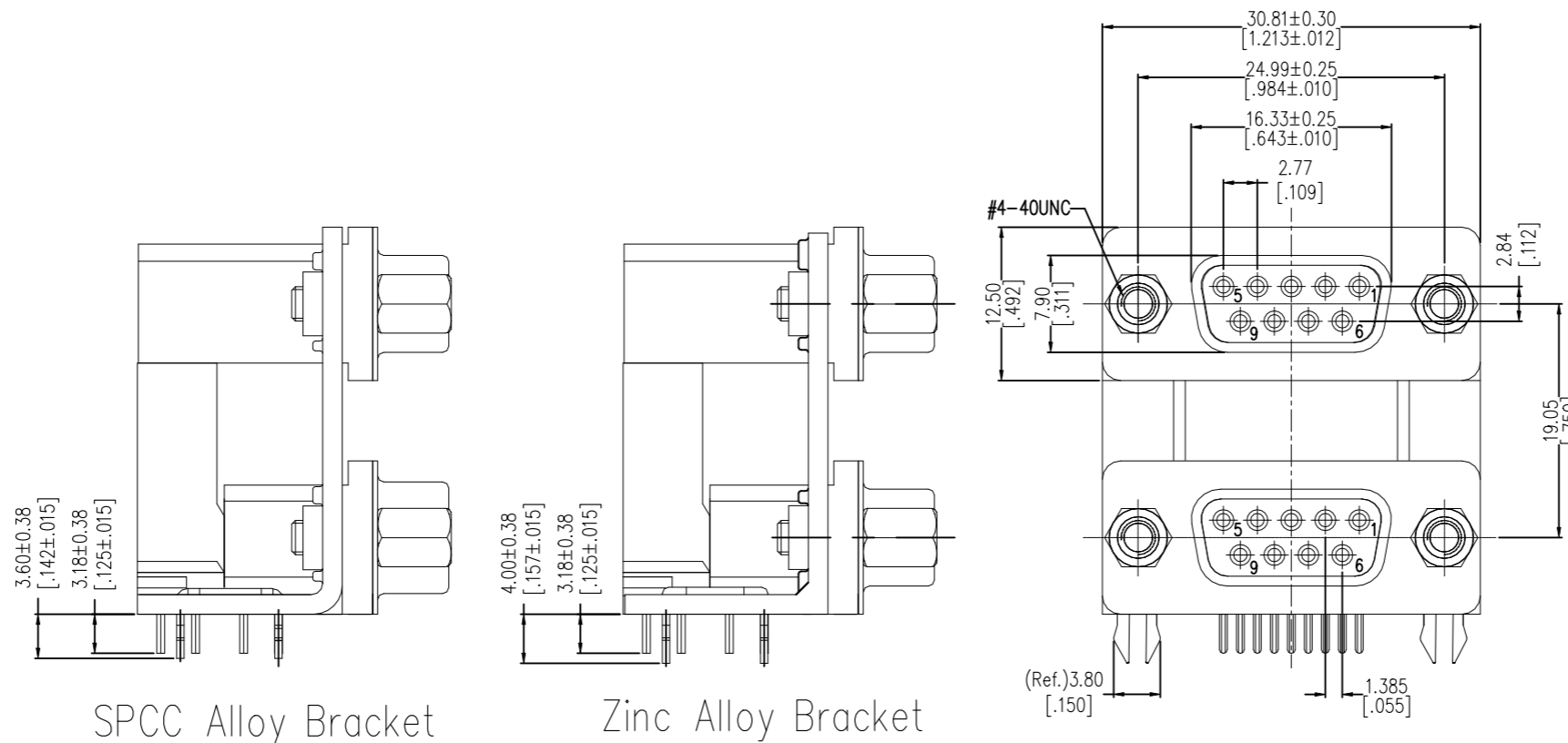
DIMENSIONS: mm	TOLERANCES UNLESS OTHERWISE SPECIFIED:	DWN JM 24MAY2023	PRELIMINARY TE Connectivity DUAL PORT D-SUB CONNECTOR
	0 PLC ± - 1 PLC ± - 2 PLC ± 0.25 3 PLC ± - 4 PLC ± - ANGLES ± -	CHK DS 24MAY2023	
MATERIAL	FINISH	APVD WH 24MAY2023	
		NAME	


PRODUCT SPEC	SIZE	CAGE CODE	DRAWING NO	RESTRICTED TO
	A3	-	C-2454917	

CUSTOMER DRAWING SCALE 1:1 SHEET 1 OF 17 REV 5

P	LTR	DESCRIPTION	DATE	DWN	APVD
-	-	SEE SHEET 1	-	-	-

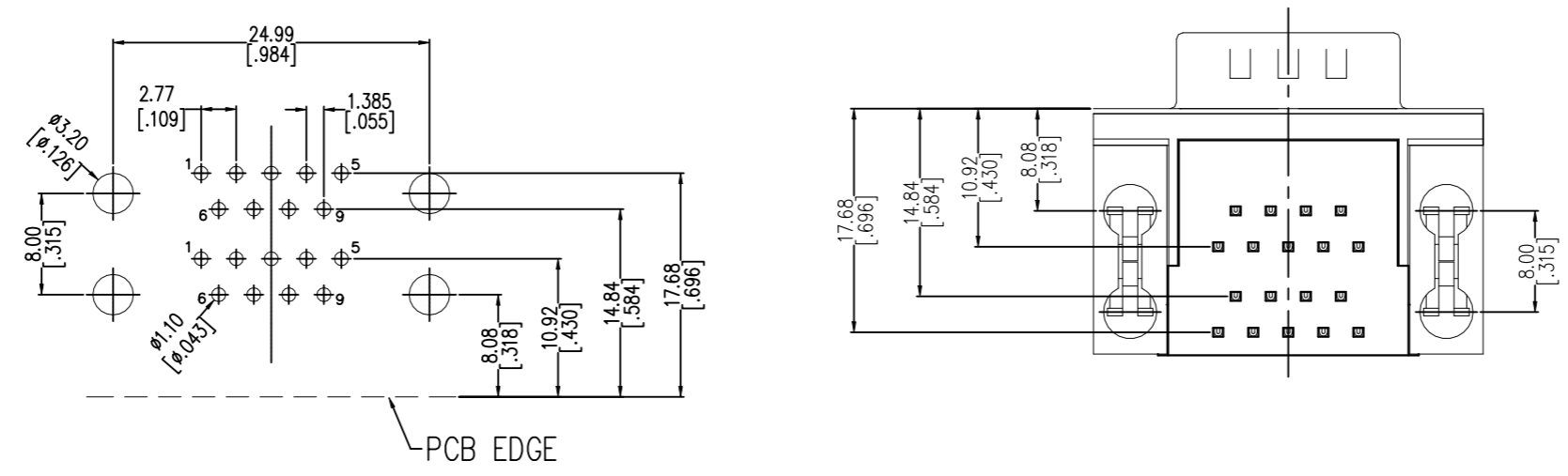
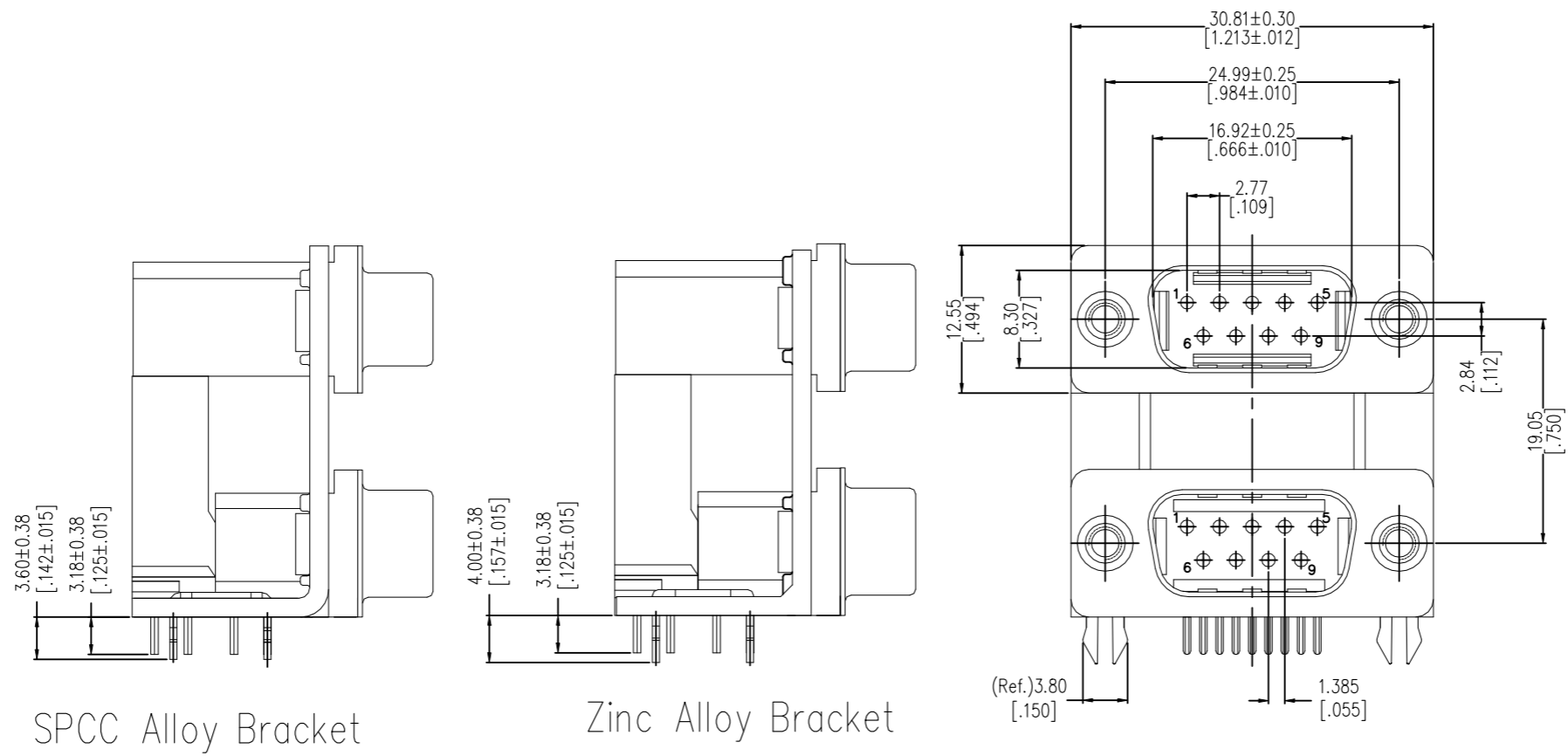
AS SHOWN 2454917-2



THIS DRAWING IS A CONTROLLED DOCUMENT.		DWN JM 24MAY2023	 TE Connectivity				
DIMENSIONS: mm		CHK DS 24MAY2023					
TOLERANCES UNLESS OTHERWISE SPECIFIED:		APVD WH 24MAY2023	NAME				
0 PLC ± - 1 PLC ± - 2 PLC ± 0.25 3 PLC ± - 4 PLC ± - ANGLES ± -		PRODUCT SPEC -	DUAL PORT D-SUB CONNECTOR				
MATERIAL -		FINISH -	APPLICATION SPEC -	SIZE A3	CAGE CODE -	DRAWING NO C-2454917	RESTRICTED TO -
CUSTOMER DRAWING			WEIGHT -	SCALE 1:1	SHEET 2 OF 17	REV 5	

P	LTR	DESCRIPTION	DATE	DWN	APVD
-	-	SEE SHEET 1	-	-	-

AS SHOWN 2454917-3



THIS DRAWING IS A CONTROLLED DOCUMENT.

DIMENSIONS:	TOLERANCES UNLESS OTHERWISE SPECIFIED:
mm	
	0 PLC ± -
	1 PLC ± -
	2 PLC ± 0.25
	3 PLC ± -
	4 PLC ± -
	ANGLES ± -

MATERIAL - FINISH -

DWN	JM	24MAY2023
CHK	DS	24MAY2023
APVD	WH	24MAY2023
PRODUCT SPEC	-	-
APPLICATION SPEC	-	-
WEIGHT	0	-

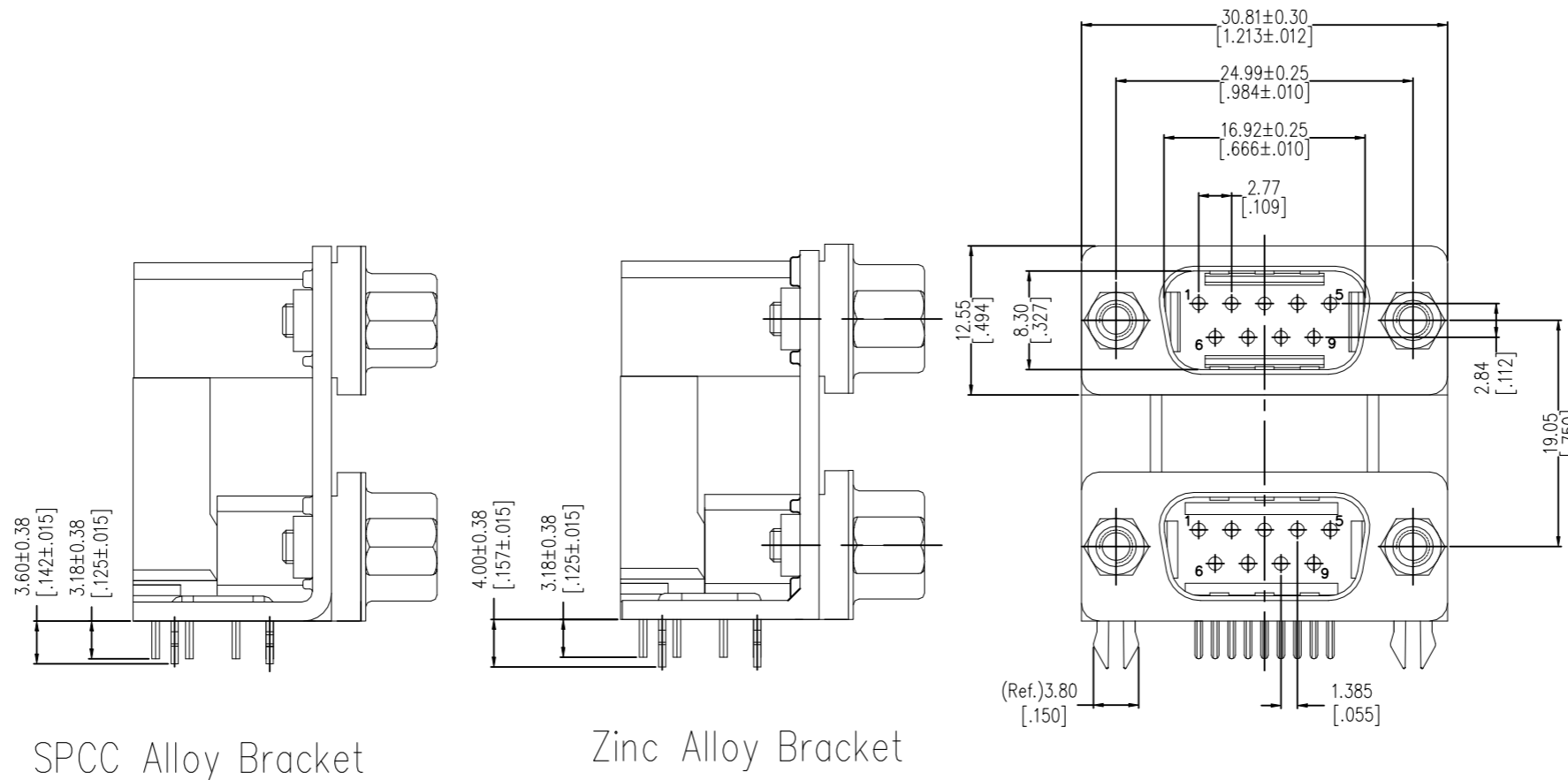


DUAL PORT D-SUB CONNECTOR

SIZE	CAGE CODE	DRAWING NO	RESTRICTED TO
A3	-	C-2454917	-

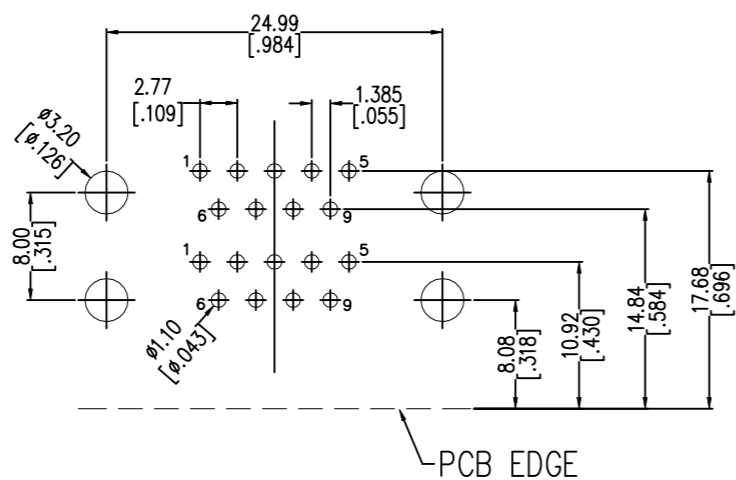
P	LTR	DESCRIPTION	DATE	DWN	APVD
-	-	SEE SHEET 1	-	-	-

AS SHOWN 2454917-4

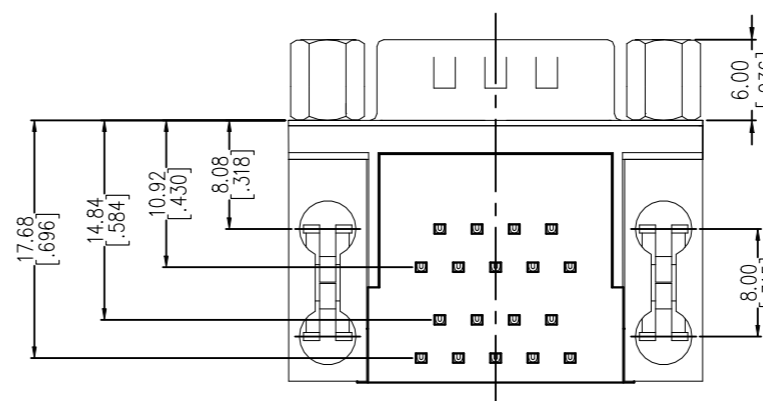


SPCC Alloy Bracket

Zinc Alloy Bracket



PCB EDGE



THIS DRAWING IS A CONTROLLED DOCUMENT.

DIMENSIONS:	TOLERANCES UNLESS OTHERWISE SPECIFIED:
mm	
	0 PLC ± -
	1 PLC ± -
	2 PLC ± 0.25
	3 PLC ± -
	4 PLC ± -
	ANGLES ± -

MATERIAL - FINISH -

DWN	JM	24MAY2023
CHK	DS	24MAY2023
APVD	WH	24MAY2023
PRODUCT SPEC	-	
APPLICATION SPEC	-	
WEIGHT	-	



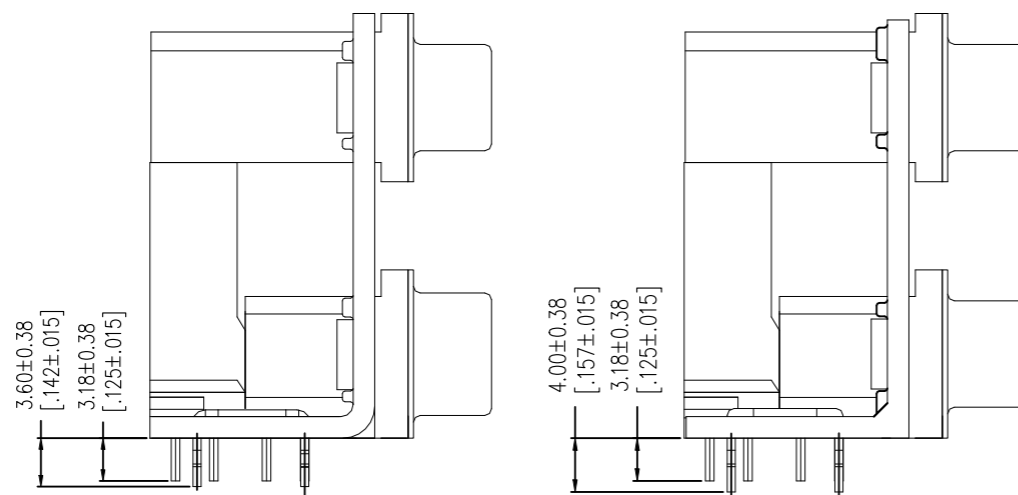
DUAL PORT D-SUB CONNECTOR

SIZE	CAGE CODE	DRAWING NO	RESTRICTED TO
A3	-	C-2454917	-

CUSTOMER DRAWING SCALE 1:1 SHEET 4 OF 17 REV 5

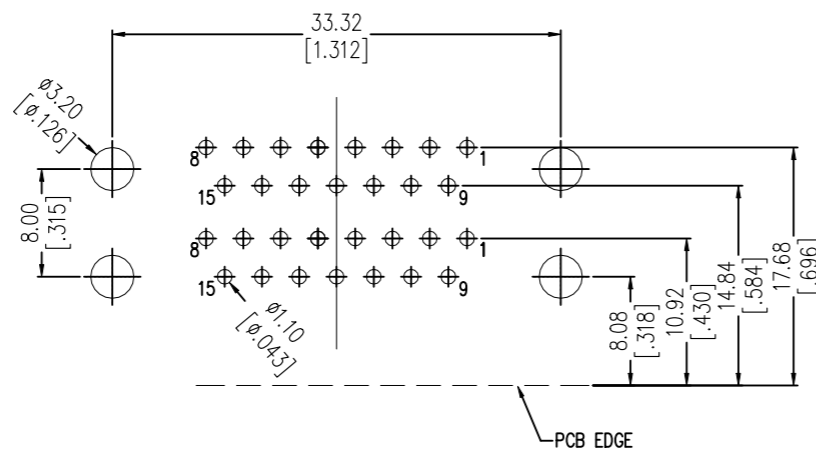
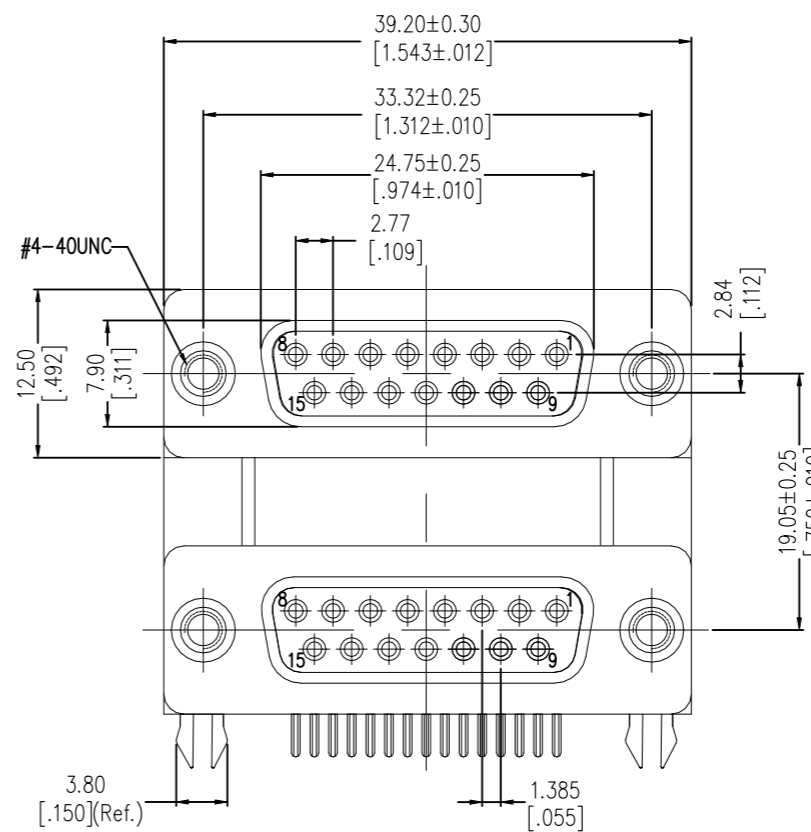
P	LTR	DESCRIPTION	DATE	DWN	APVD
-	-	SEE SHEET 1	-	-	-

AS SHOWN 2454917-5

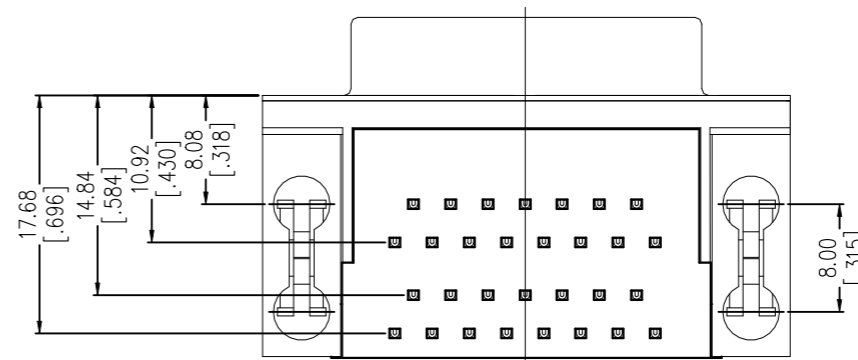


SPCC Alloy Bracket

Zinc Alloy Bracket



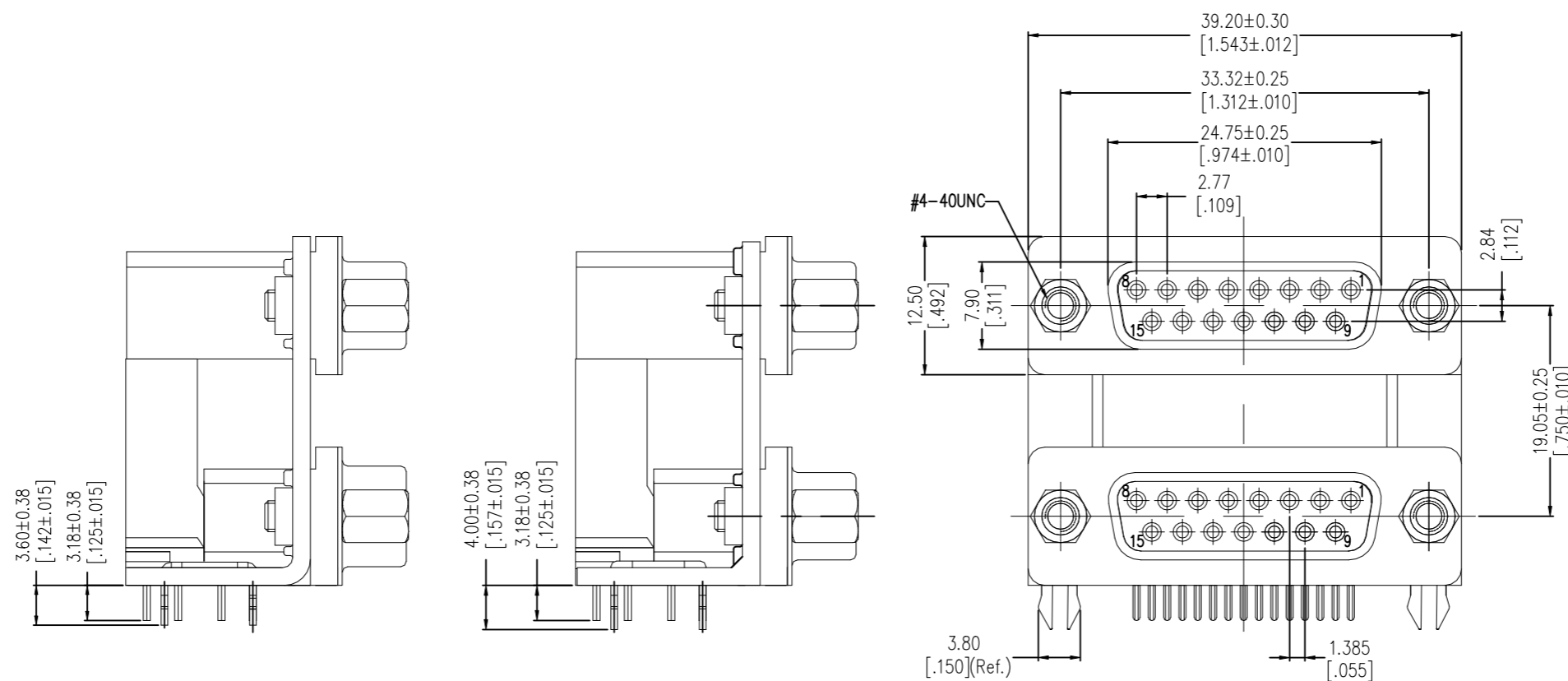
RECOMMENDED P.C.B LAYOUT (COMPONENT SIDE)(TOLERANCE: ±0.05)



THIS DRAWING IS A CONTROLLED DOCUMENT.		DWN JM 24MAY2023	TE Connectivity			
DIMENSIONS: mm		CHK DS 24MAY2023				
TOLERANCES UNLESS OTHERWISE SPECIFIED:		APVD WH 24MAY2023	NAME			
0 PLC ± - 1 PLC ± - 2 PLC ± 0.25 3 PLC ± - 4 PLC ± - ANGLES ± -		PRODUCT SPEC -	DUAL PORT D-SUB CONNECTOR			
MATERIAL -		APPLICATION SPEC -	SIZE A3	CAGE CODE -	DRAWING NO C-2454917	RESTRICTED TO -
FINISH -		WEIGHT -	CUSTOMER DRAWING		SCALE 1:1	SHEET 5 OF 17
					REV 5	

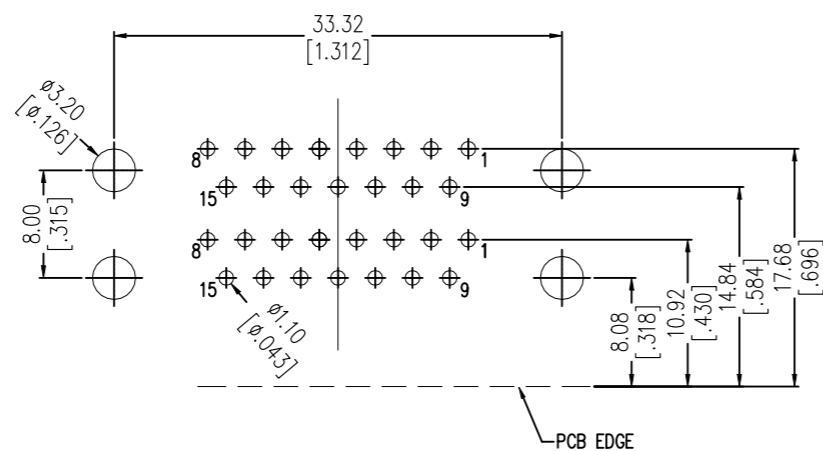
P	LTR	DESCRIPTION	DATE	DWN	APVD
-	-	SEE SHEET 1	-	-	-

AS SHOWN 2454917-6




SPCC Alloy Bracket

Zinc Alloy Bracket

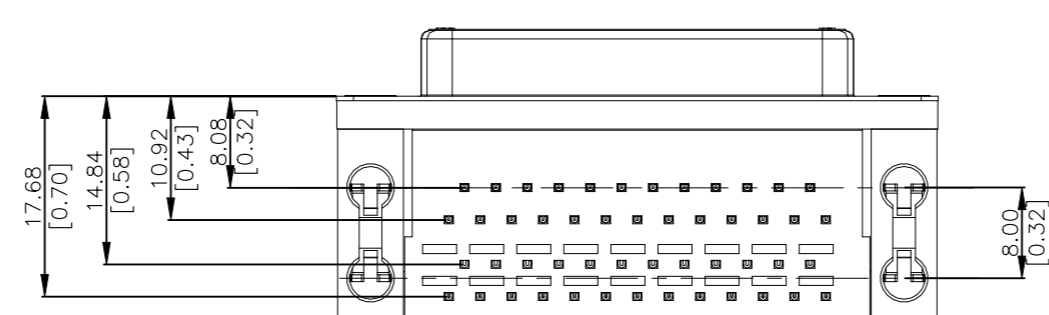
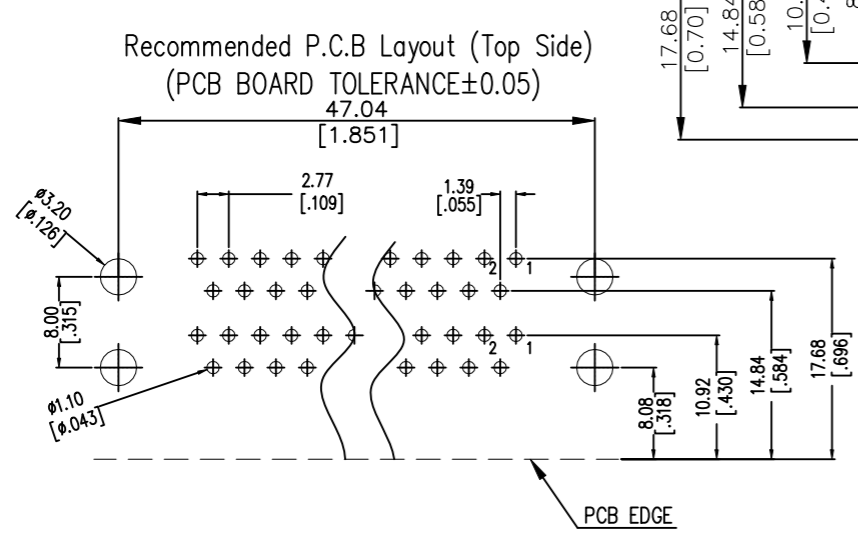
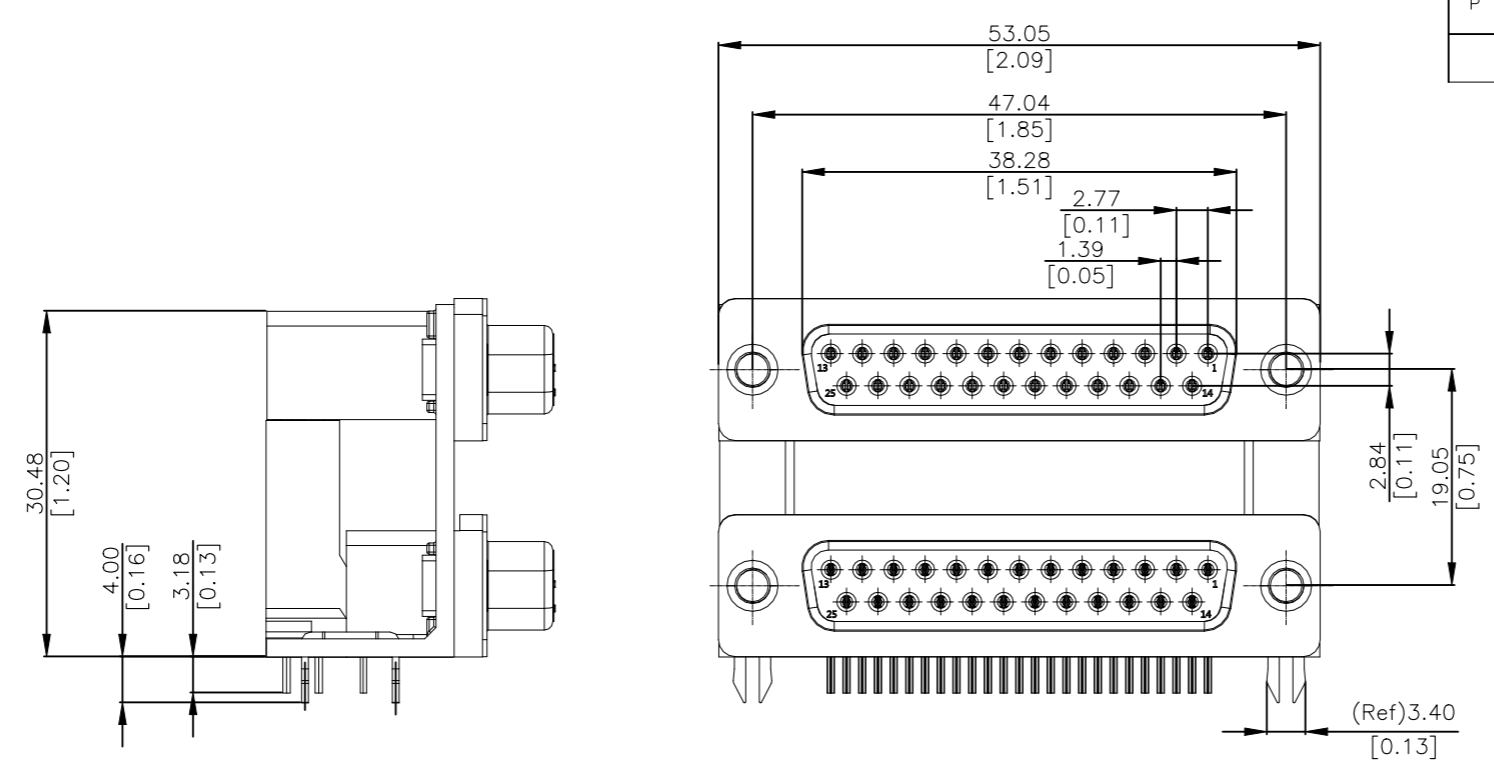


RECOMMENDED P.C.B LAYOUT (COMPONENT SIDE) (TOLERANCE: ±0.05)

THIS DRAWING IS A CONTROLLED DOCUMENT.		DWN JM 24MAY2023	 TE Connectivity		
DIMENSIONS: mm		CHK DS 24MAY2023			
TOLERANCES UNLESS OTHERWISE SPECIFIED:		APVD WH 24MAY2023	NAME		
0 PLC ± -		PRODUCT SPEC	DUAL PORT D-SUB CONNECTOR		
1 PLC ± -		APPLICATION SPEC	-		
2 PLC ± 0.25		SIZE	CAGE CODE	DRAWING NO	RESTRICTED TO
3 PLC ± -		A3	-	C-2454917	-
4 PLC ± -		CUSTOMER DRAWING			
ANGLES ± -		SCALE	SHEET	REV	
FINISH		1:1	6 OF 17	5	

REVISIONS					
P	LTR	DESCRIPTION	DATE	DWN	APVD
-	-	SEE SHEET 1	-	-	-

AS SHOWN 2454917-7

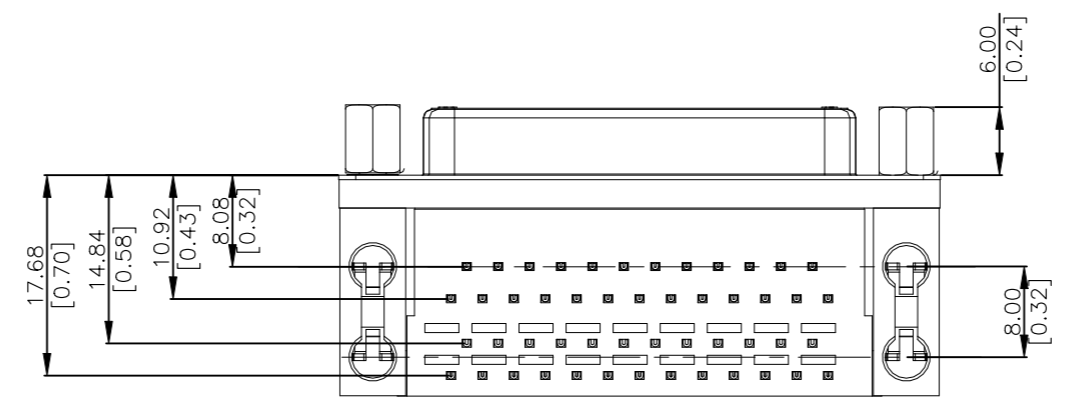
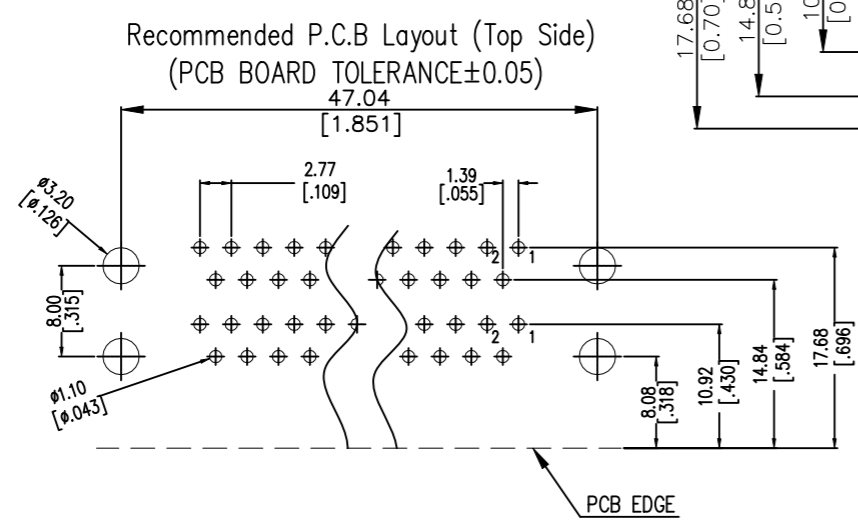
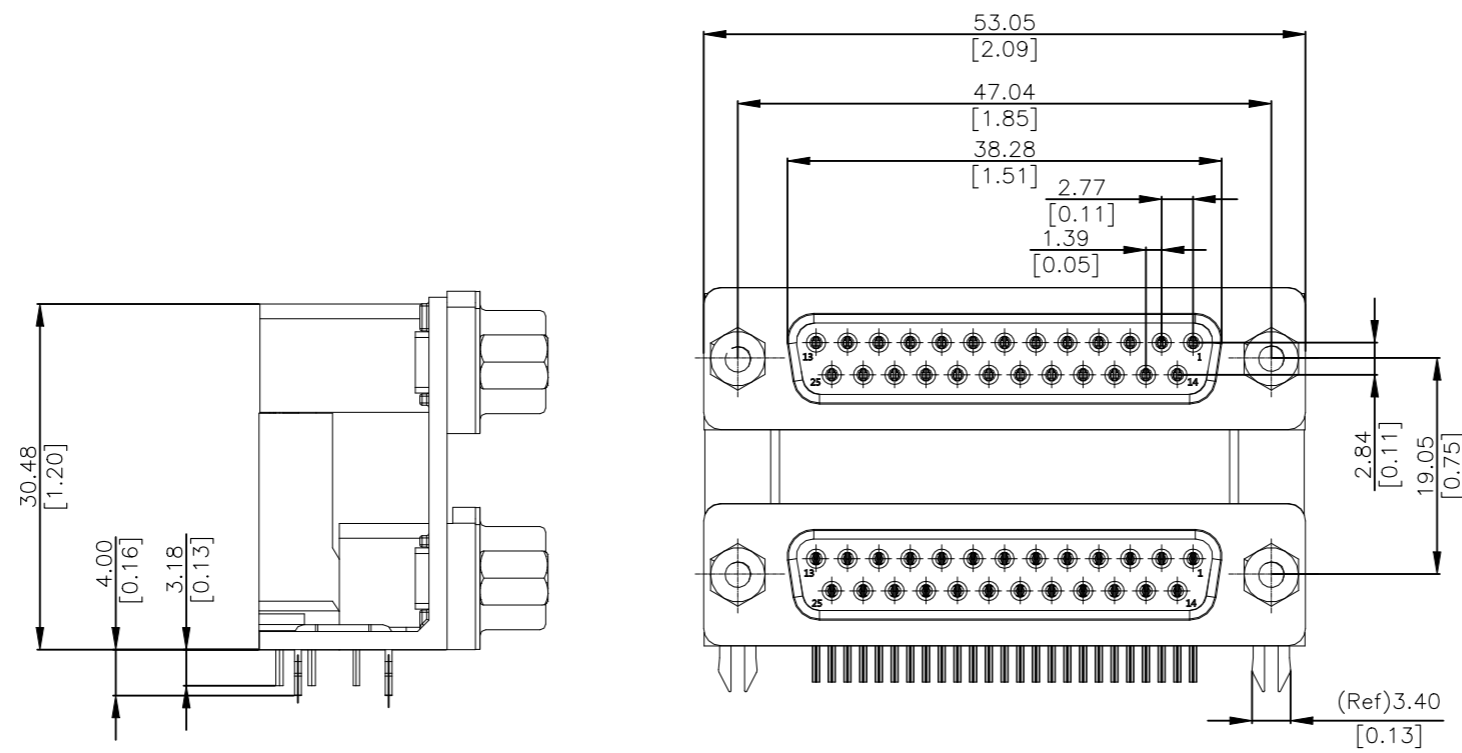



THIS DRAWING IS A CONTROLLED DOCUMENT.		DWN JM 24MAY2023	TE Connectivity				
DIMENSIONS: mm		CHK DS 24MAY2023					
TOLERANCES UNLESS OTHERWISE SPECIFIED:		APVD WH 24MAY2023	NAME				
0 PLC ± - 1 PLC ± - 2 PLC ± 0.25 3 PLC ± - 4 PLC ± - ANGLES ± -		PRODUCT SPEC -	DUAL PORT D-SUB CONNECTOR				
MATERIAL -		FINISH -	APPLICATION SPEC -	SIZE A3	CAGE CODE -	DRAWING NO C-2454917	RESTRICTED TO -
CUSTOMER DRAWING			WEIGHT -	SCALE 1:1	SHEET 7 OF 17	REV 5	

REVISIONS

P	LTR	DESCRIPTION	DATE	DWN	APVD
-	-	SEE SHEET 1	-	-	-

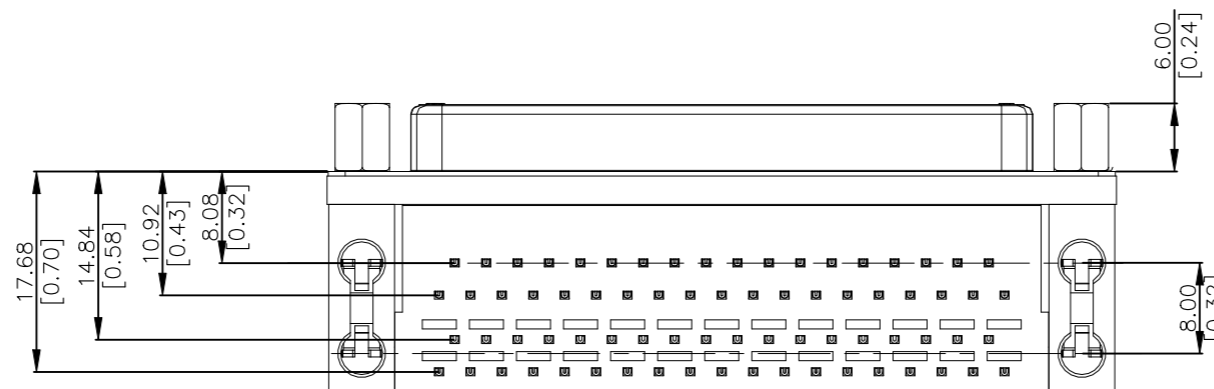
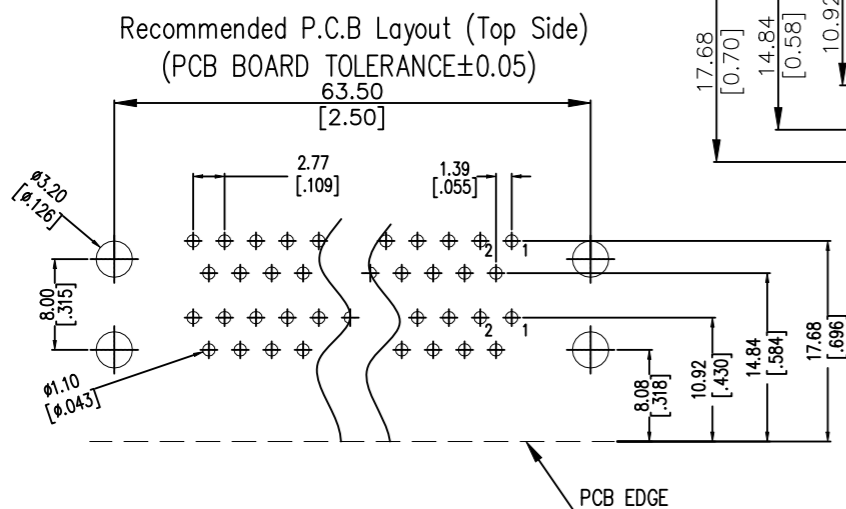
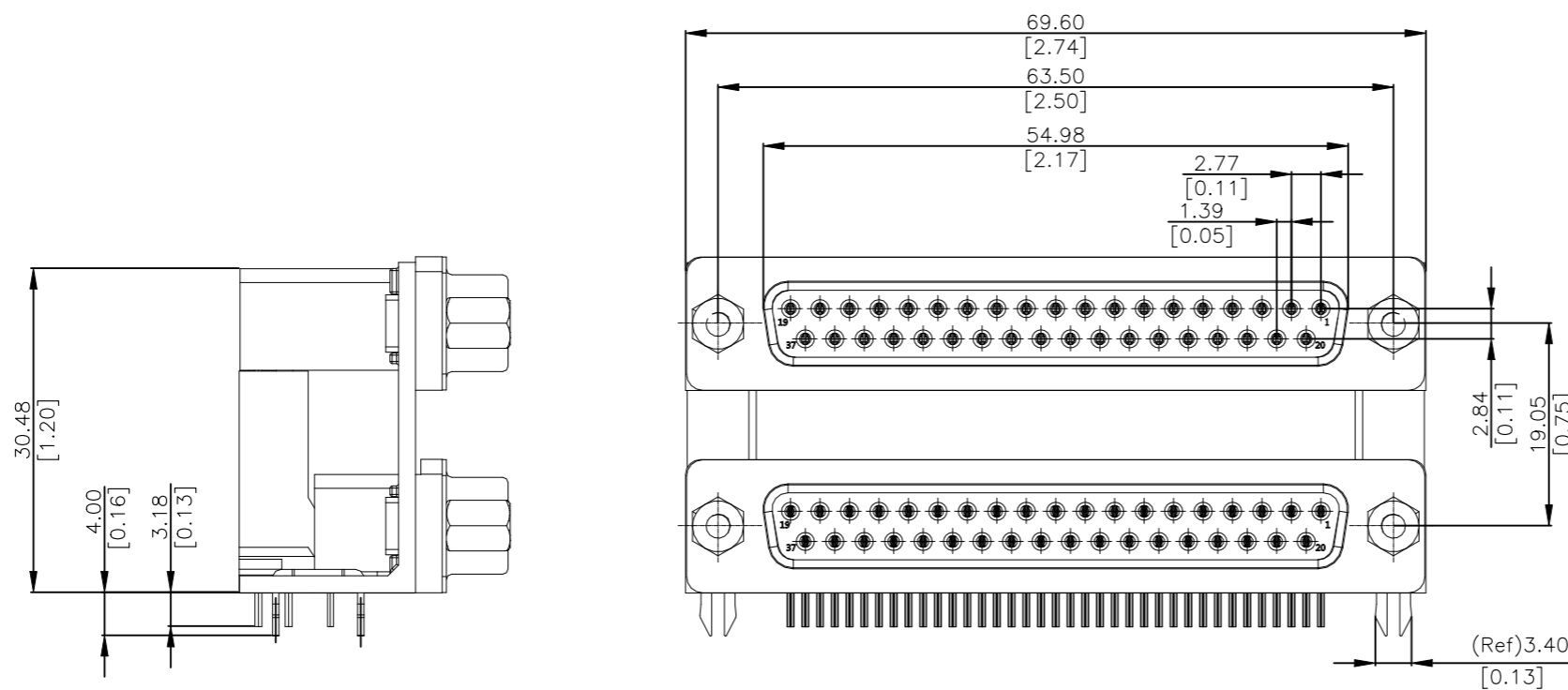
AS SHOWN 2454917-8



THIS DRAWING IS A CONTROLLED DOCUMENT.		DWN JM 24MAY2023	 TE Connectivity				
DIMENSIONS: mm		CHK DS 24MAY2023					
TOLERANCES UNLESS OTHERWISE SPECIFIED:		APVD WH 24MAY2023	NAME				
0 PLC ± - 1 PLC ± - 2 PLC ± 0.25 3 PLC ± - 4 PLC ± - ANGLES ± -		PRODUCT SPEC -	DUAL PORT D-SUB CONNECTOR				
MATERIAL -		APPLICATION SPEC -	SIZE A3	CAGE CODE -	DRAWING NO C-2454917	RESTRICTED TO -	
FINISH -		WEIGHT -	CUSTOMER DRAWING		SCALE 1:1	SHEET 8 OF 17	REV 5

P	LTR	DESCRIPTION	DATE	DWN	APVD
-	-	SEE SHEET 1	-	-	-

AS SHOWN 2454917-9

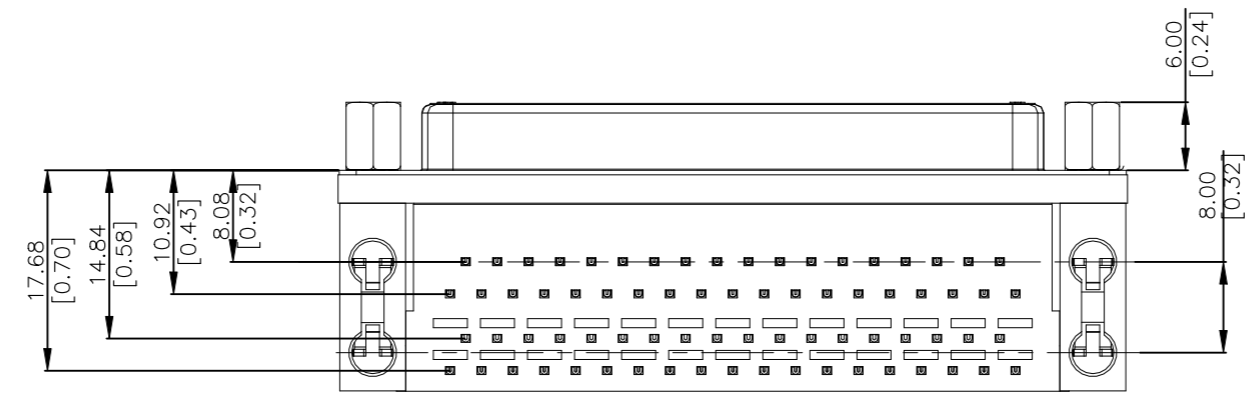
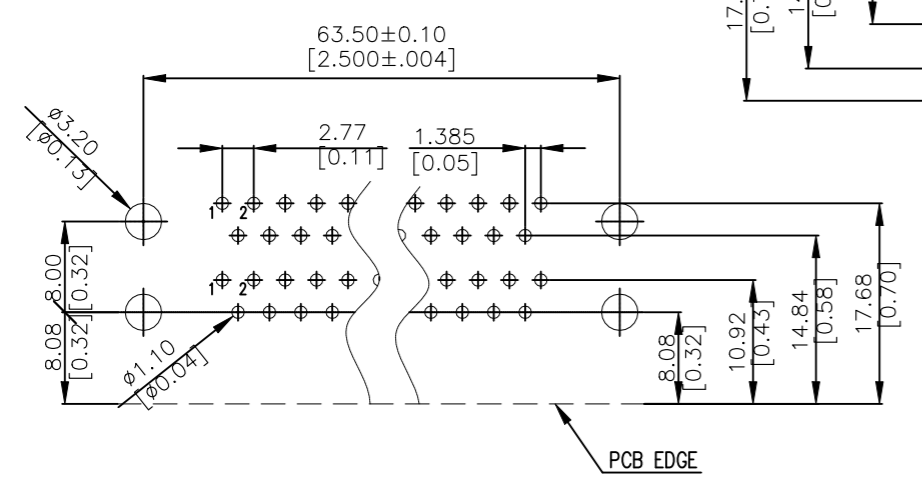
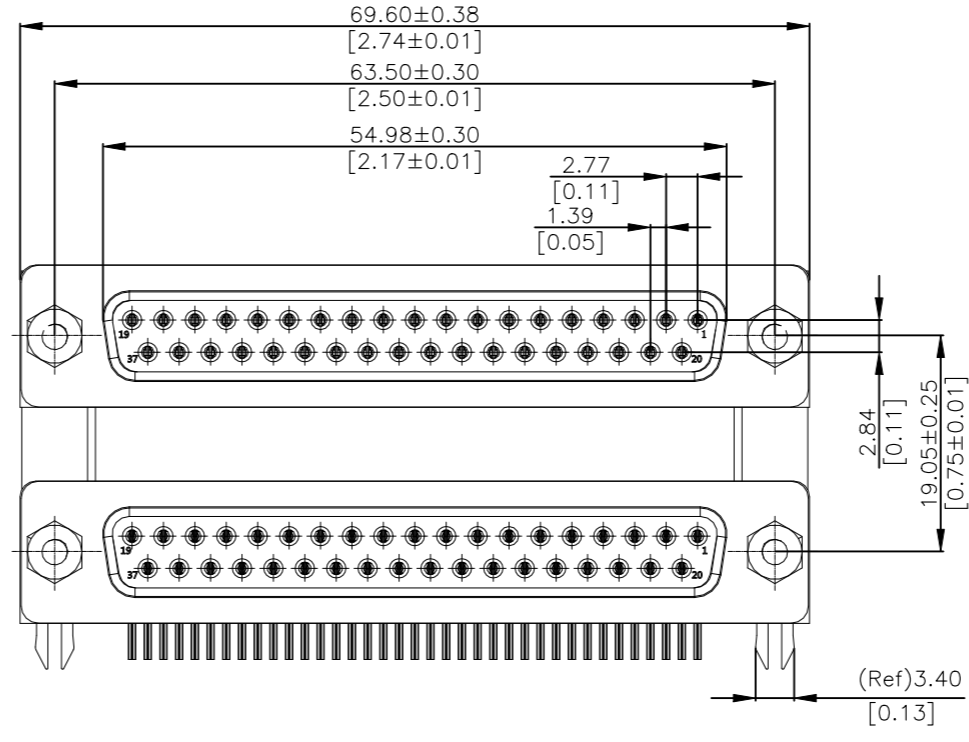
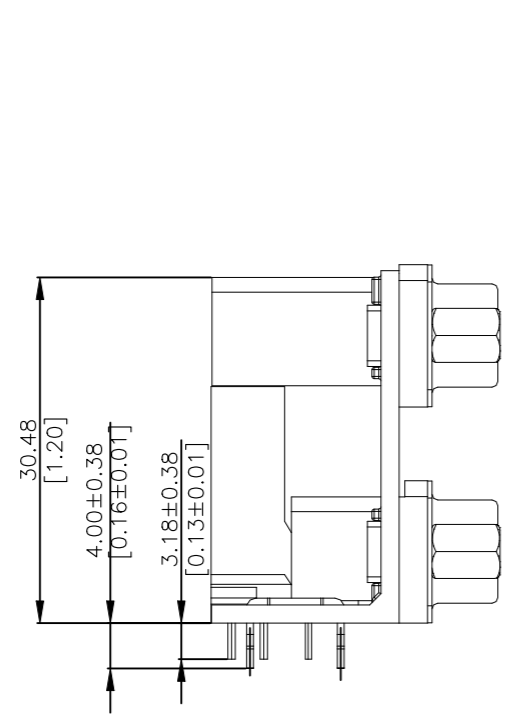


THIS DRAWING IS A CONTROLLED DOCUMENT.		DWN JM 24MAY2023	TE Connectivity				
DIMENSIONS: mm		CHK DS 24MAY2023					
TOLERANCES UNLESS OTHERWISE SPECIFIED:		APVD WH 24MAY2023	NAME				
<ul style="list-style-type: none"> 0 PLC ± - 1 PLC ± - 2 PLC ± 0.25 3 PLC ± - 4 PLC ± - ANGLES ± - 		PRODUCT SPEC -	DUAL PORT D-SUB CONNECTOR				
MATERIAL -		APPLICATION SPEC -	SIZE A3	CAGE CODE -	DRAWING NO C-2454917	RESTRICTED TO -	
FINISH -		WEIGHT -	CUSTOMER DRAWING		SCALE 1:1	SHEET 9 OF 17	REV 5

REVISIONS

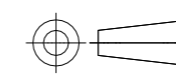
P	LTR	DESCRIPTION	DATE	DWN	APVD
-	-	SEE SHEET 1	-	-	-

AS SHOWN 1-2454917-1



THIS DRAWING IS A CONTROLLED DOCUMENT.

DIMENSIONS:
mm



TOLERANCES UNLESS OTHERWISE SPECIFIED:

0 PLC	± -
1 PLC	± -
2 PLC	± 0.25
3 PLC	± -
4 PLC	± -
ANGLES	± -
FINISH	-

MATERIAL
-

DWN	JM	24MAY2023
CHK	DS	24MAY2023
APVD	WH	24MAY2023



NAME		DUAL PORT D-SUB CONNECTOR	
SIZE	CAGE CODE	DRAWING NO	RESTRICTED TO
A3	-	C-2454917	-

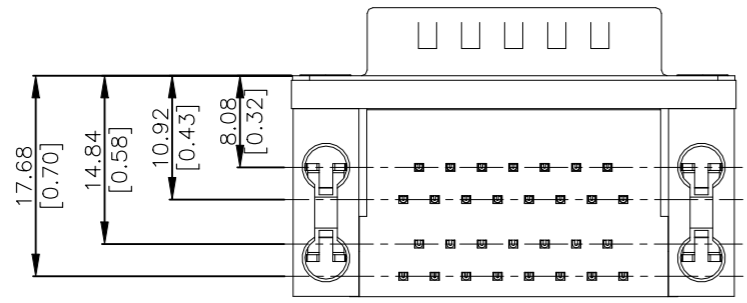
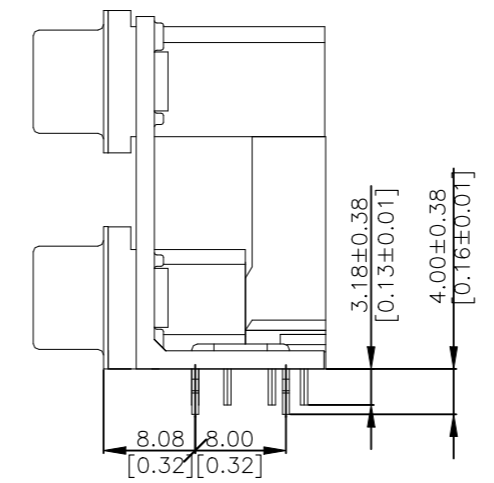
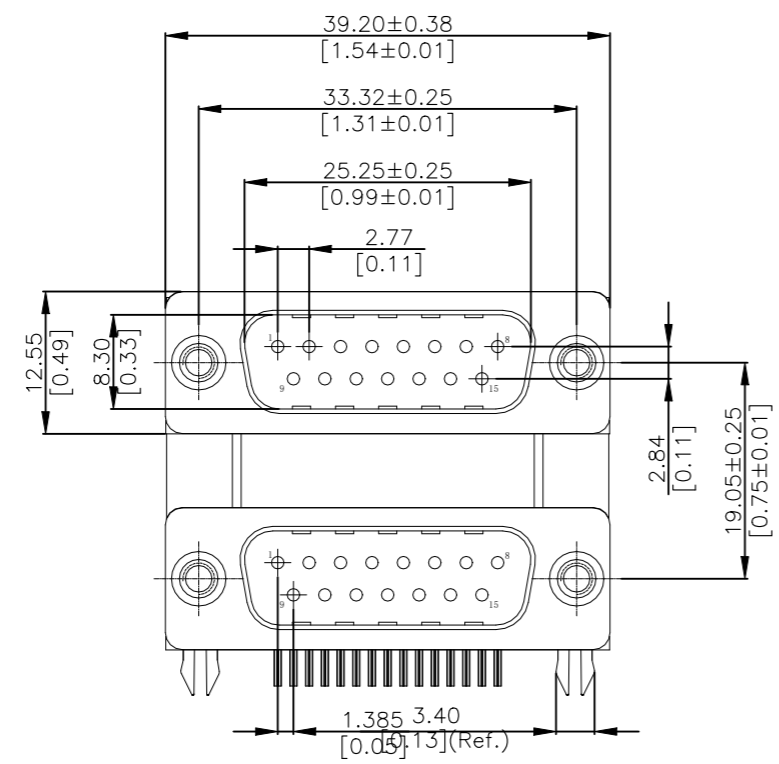
CUSTOMER DRAWING

WEIGHT	-	SCALE	1:1	SHEET	10 OF 17	REV	5
--------	---	-------	-----	-------	----------	-----	---

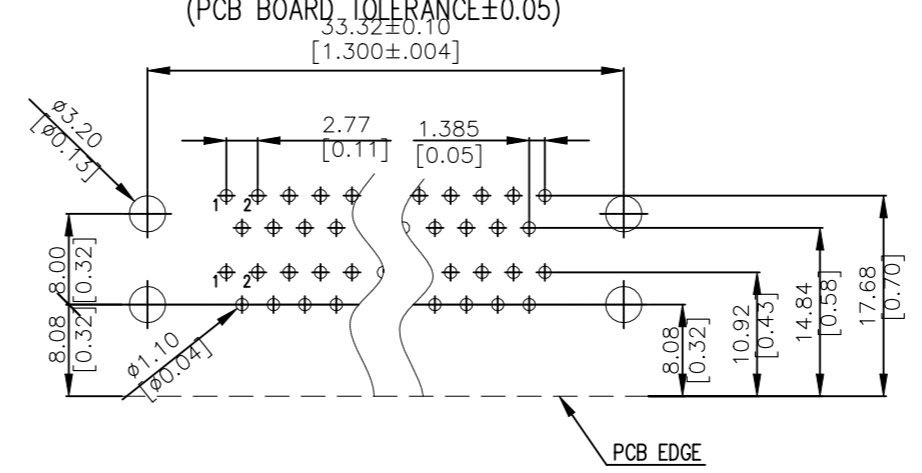
REVISIONS

P	LTR	DESCRIPTION	DATE	DWN	APVD
-	-	SEE SHEET 1	-	-	-

AS SHOWN 1-2454917-2



Recommended P.C.B Layout (Top Side)
(PCB BOARD TOLERANCE ±0.05)



THIS DRAWING IS A CONTROLLED DOCUMENT.

DIMENSIONS:	TOLERANCES UNLESS OTHERWISE SPECIFIED:
mm	
	0 PLC ± -
	1 PLC ± -
	2 PLC ± 0.25
	3 PLC ± -
	4 PLC ± -
	ANGLES ± -

MATERIAL - FINISH -

DWN	JM	24MAY2023
CHK	DS	24MAY2023
APVD	WH	24MAY2023
PRODUCT SPEC	-	-
APPLICATION SPEC	-	-
WEIGHT	-	-

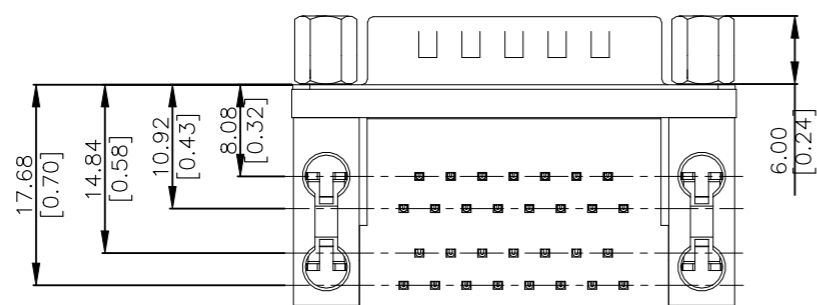
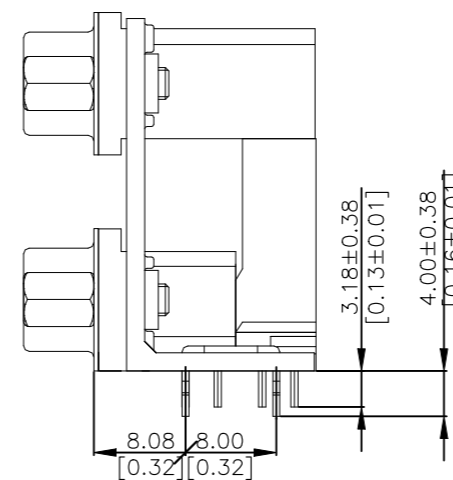
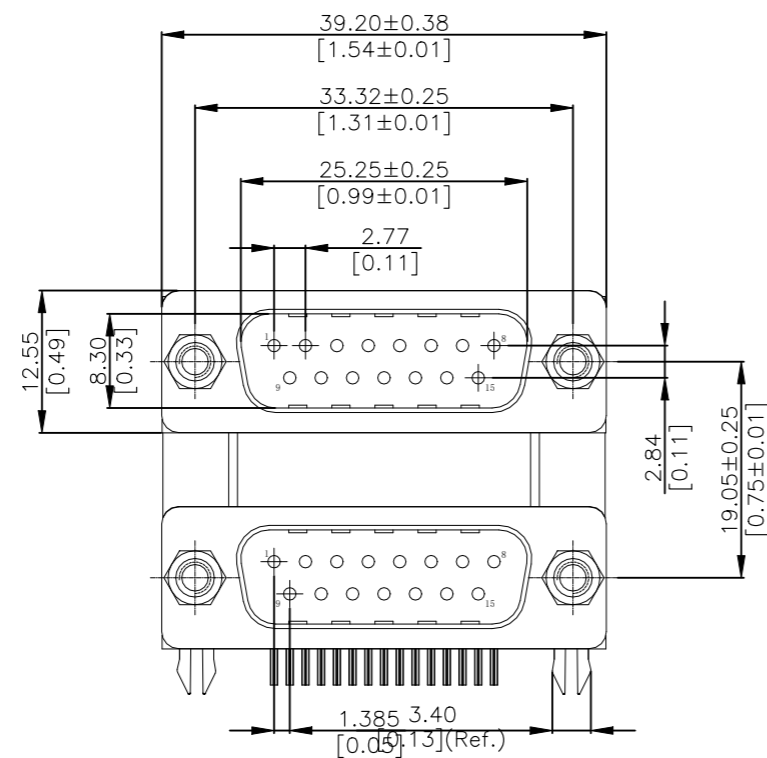


DUAL PORT D-SUB CONNECTOR

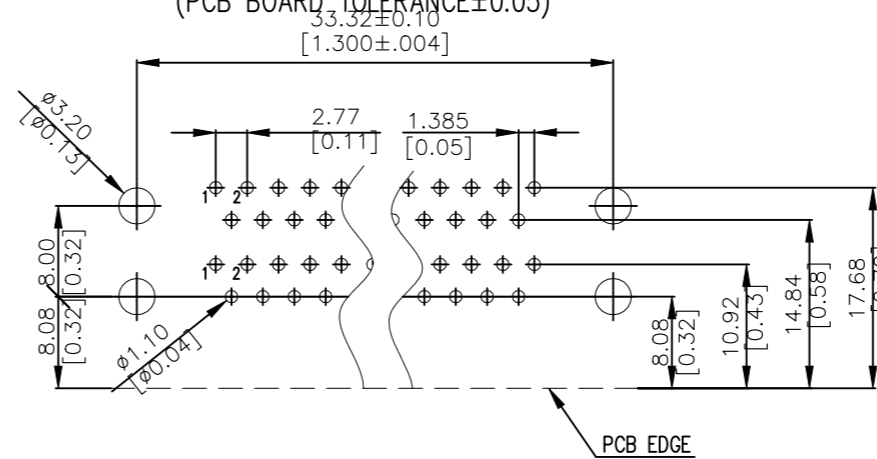
SIZE	CAGE CODE	DRAWING NO	RESTRICTED TO
A3	-	C-2454917	-

P	LTR	DESCRIPTION	DATE	DWN	APVD
-	-	SEE SHEET 1	-	-	-

AS SHOWN 1-2454917-3



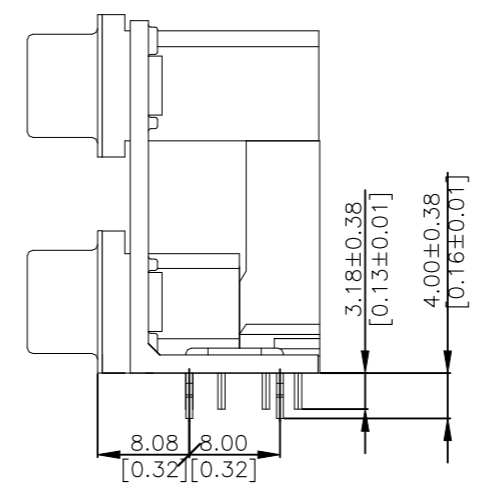
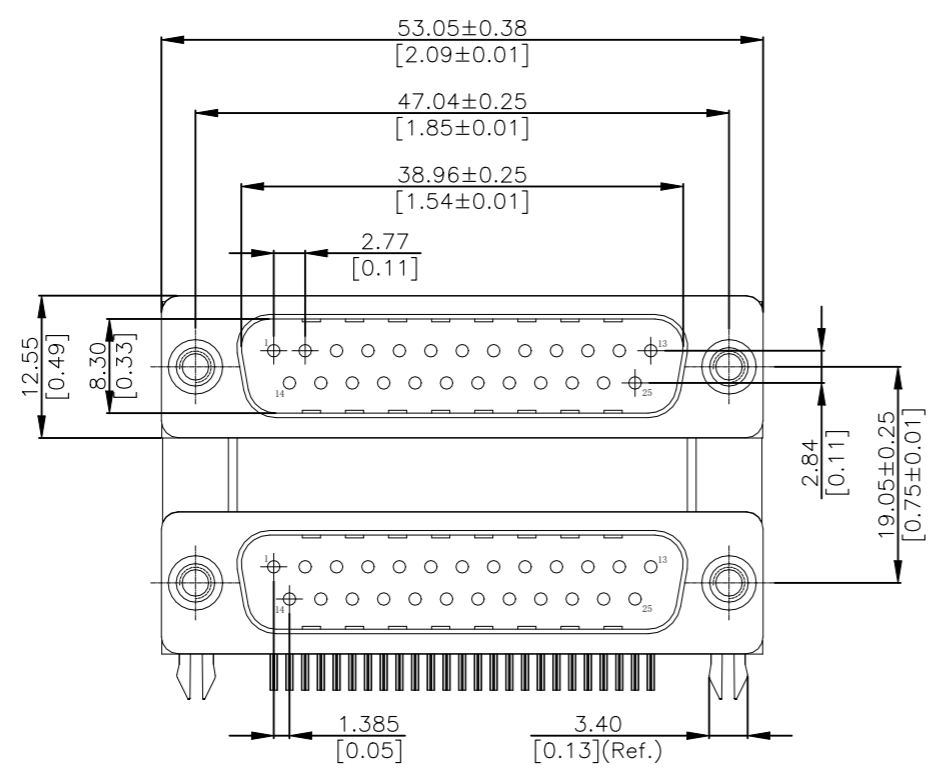
Recommended P.C.B Layout (Top Side)
(PCB BOARD TOLERANCE ± 0.05)



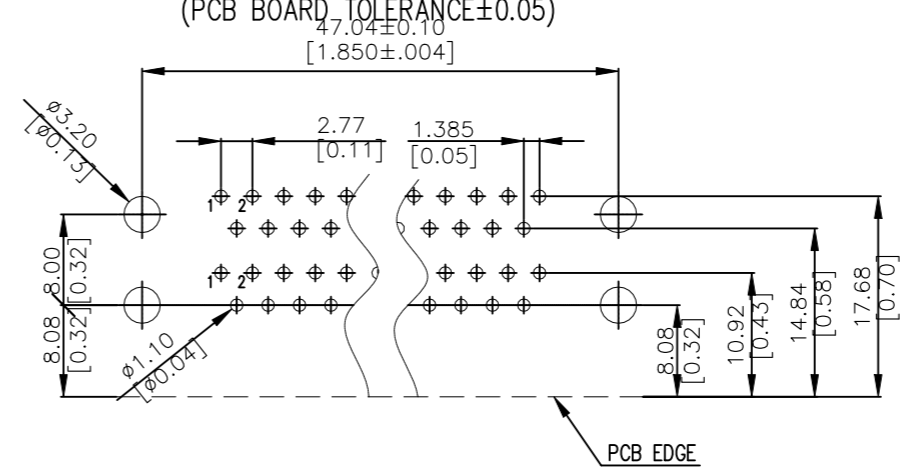
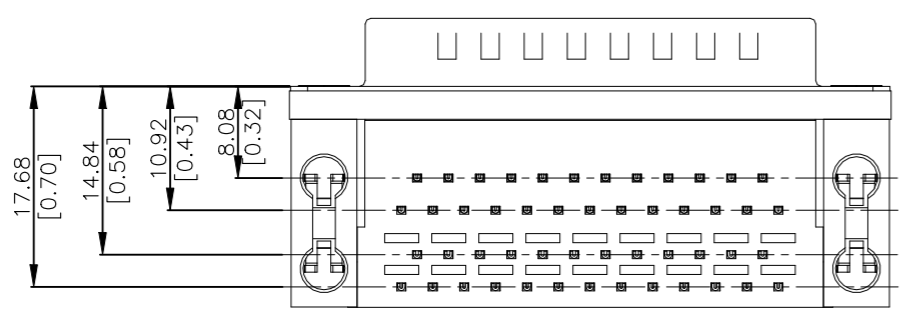
THIS DRAWING IS A CONTROLLED DOCUMENT.		DWN JM	24MAY2023	STE TE Connectivity	
		CHK DS	24MAY2023		
DIMENSIONS: mm		TOLERANCES UNLESS OTHERWISE SPECIFIED:		NAME	
		0 PLC	$\pm -$	DUAL PORT D-SUB CONNECTOR	
		1 PLC	$\pm -$		
		2 PLC	± 0.25		
		3 PLC	$\pm -$		
MATERIAL		FINISH		PRODUCT SPEC	-
				APPLICATION SPEC	-
				WEIGHT	-
				SIZE	A3
				CAGE CODE	-
				DRAWING NO	C-2454917
				RESTRICTED TO	-
				SCALE	1:1
				SHEET	12 OF 17
				REV	5

REVISIONS					
P	LTR	DESCRIPTION	DATE	DWN	APVD
-	-	SEE SHEET 1	-	-	-

AS SHOWN 1-2454917-4



Recommended P.C.B Layout (Top Side)
(PCB BOARD TOLERANCE ±0.05)



THIS DRAWING IS A CONTROLLED DOCUMENT.

DIMENSIONS:	TOLERANCES UNLESS OTHERWISE SPECIFIED:
mm	
	0 PLC ± -
	1 PLC ± -
	2 PLC ± 0.25
	3 PLC ± -
	4 PLC ± -
	ANGLES ± -

MATERIAL - FINISH -

DWN	JM	24MAY2023
CHK	DS	24MAY2023
APVD	WH	24MAY2023
PRODUCT SPEC	-	-
APPLICATION SPEC	-	-
WEIGHT	-	-

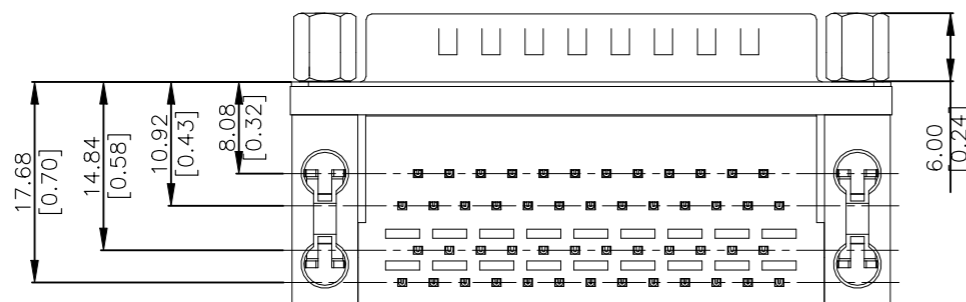
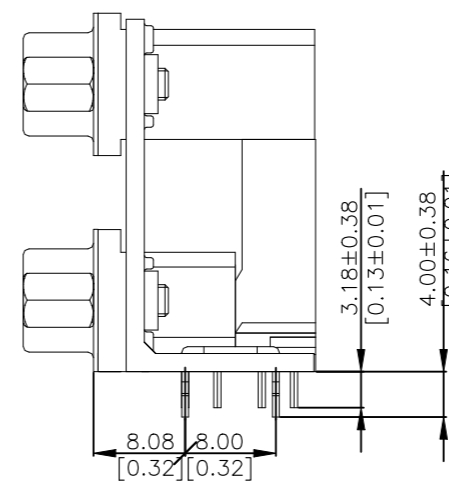
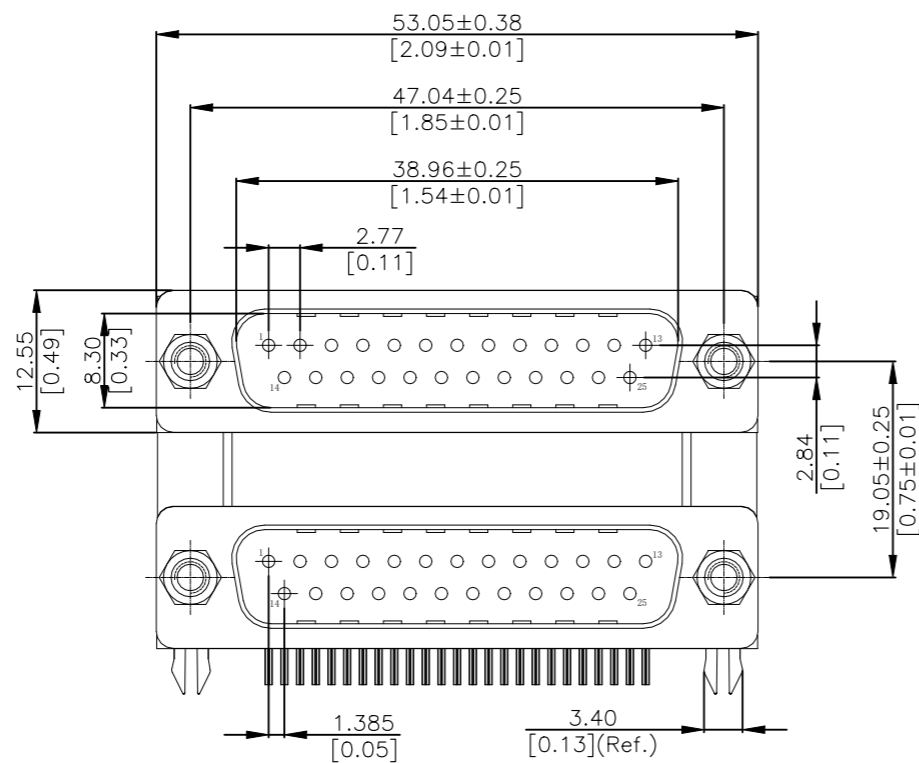


DUAL PORT D-SUB CONNECTOR

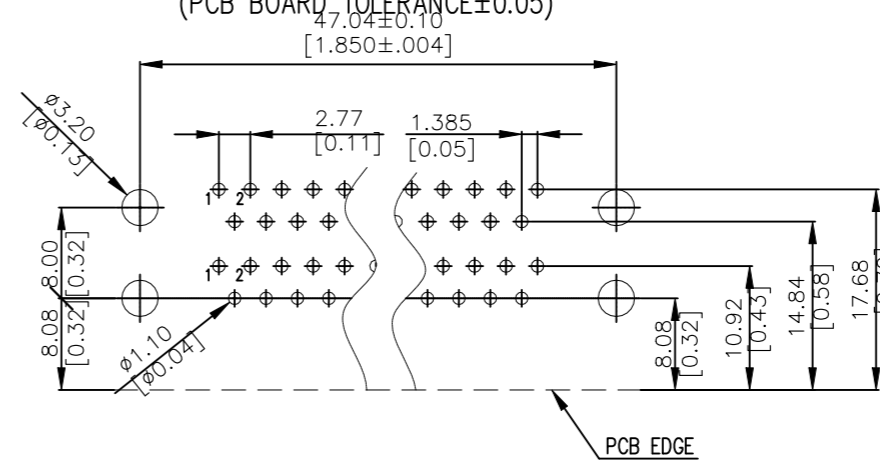
SIZE	CAGE CODE	DRAWING NO	RESTRICTED TO
A3	-	C-2454917	-


P	LTR	DESCRIPTION	DATE	DWN	APVD
-	-	SEE SHEET 1	-	-	-

AS SHOWN 1-2454917-5



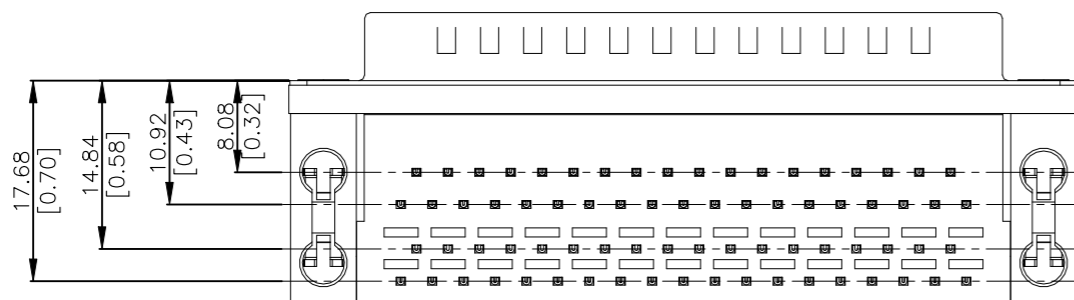
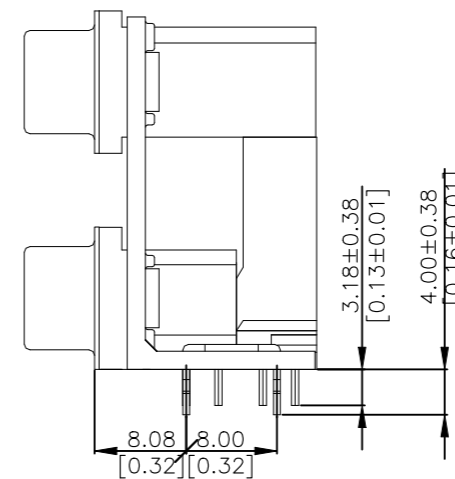
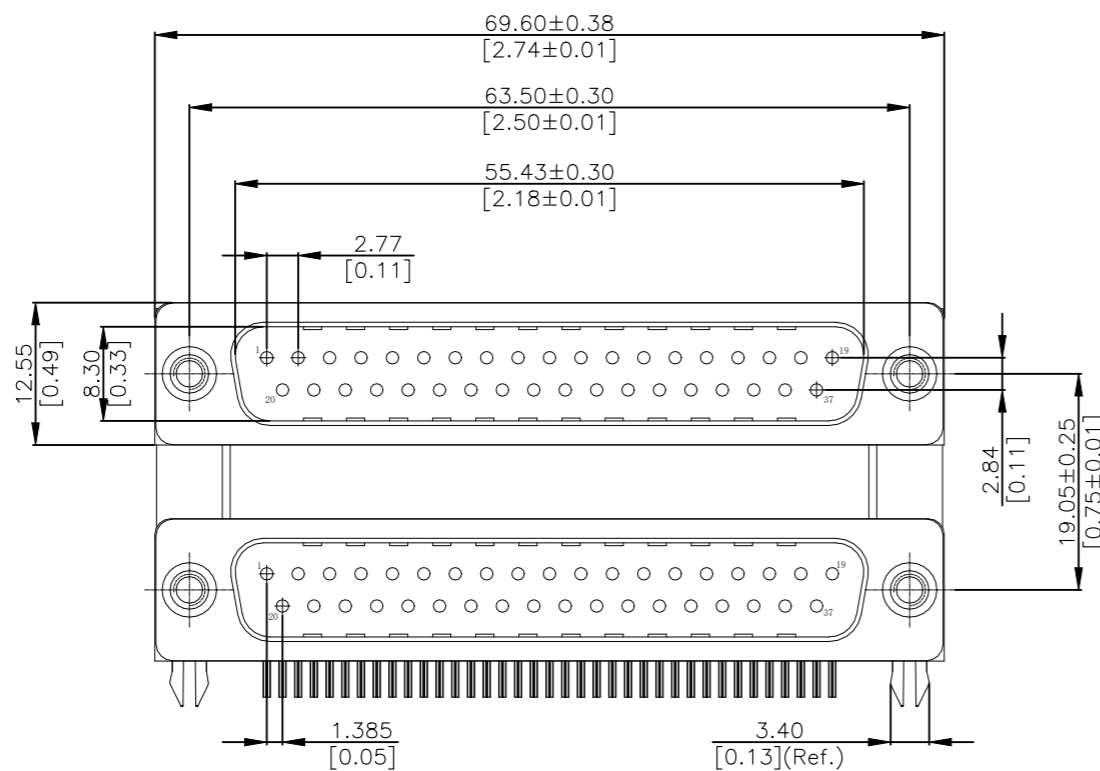
Recommended P.C.B Layout (Top Side)
(PCB BOARD TOLERANCE ± 0.05)



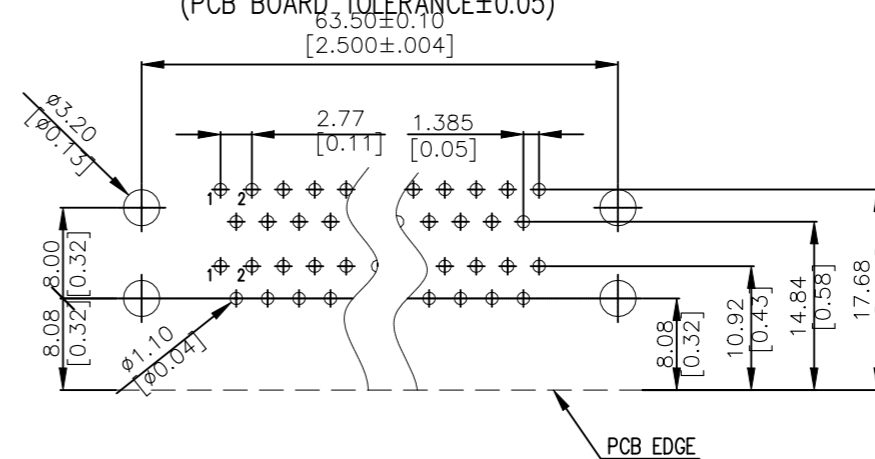
THIS DRAWING IS A CONTROLLED DOCUMENT.		DWN	JM	24MAY2023	 TE Connectivity			
		CHK	DS	24MAY2023				
		APVD	WH	24MAY2023				
		PRODUCT SPEC						
		APPLICATION SPEC			NAME	DUAL PORT D-SUB CONNECTOR		
		WEIGHT			SIZE	A3		
		CUSTOMER DRAWING		SCALE	1:1	SHEET	14 OF 17	
				RESTRICTED TO			REV	5

P	LTR	DESCRIPTION	DATE	DWN	APVD
-	-	SEE SHEET 1	-	-	-

AS SHOWN 1-2454917-6



Recommended P.C.B Layout (Top Side)
(PCB BOARD TOLERANCE ±0.05)



THIS DRAWING IS A CONTROLLED DOCUMENT.

DIMENSIONS: mm	TOLERANCES UNLESS OTHERWISE SPECIFIED:
	0 PLC ± -
	1 PLC ± -
	2 PLC ± 0.25
	3 PLC ± -
	4 PLC ± -
	ANGLES ± -
MATERIAL	FINISH

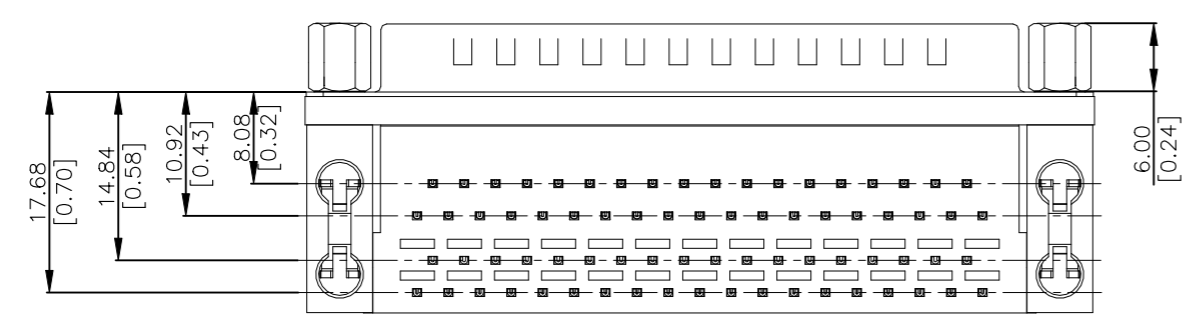
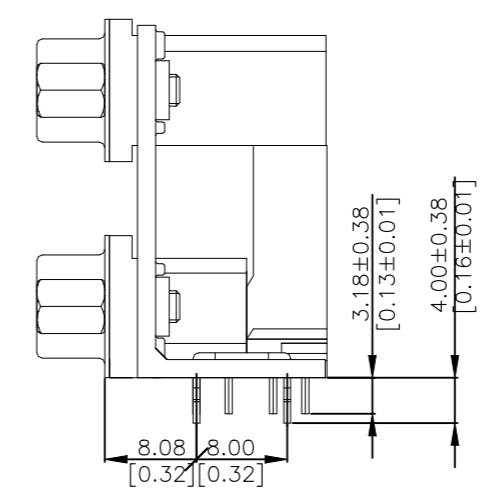
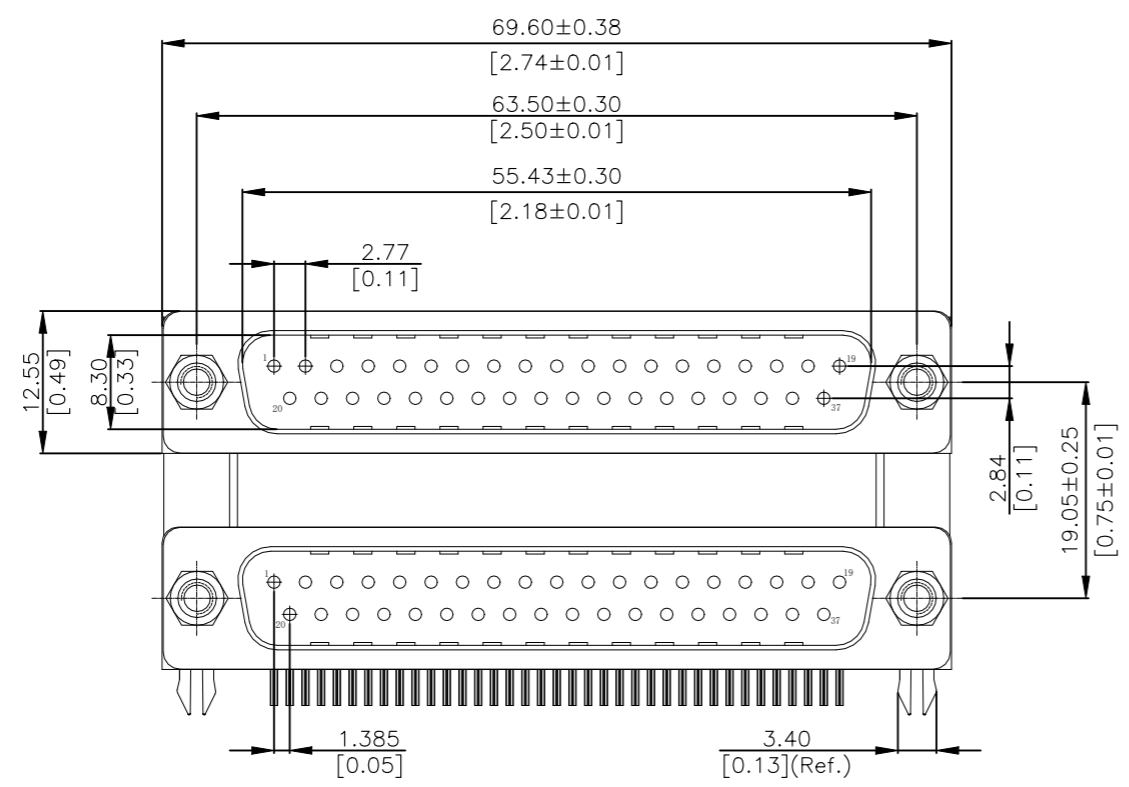
DWN	JM	24MAY2023
CHK	DS	24MAY2023
APVD	WH	24MAY2023
PRODUCT SPEC	-	
APPLICATION SPEC	-	
WEIGHT	-	
CUSTOMER DRAWING		

TE Connectivity		NAME		RESTRICTED TO
		DUAL PORT D-SUB CONNECTOR		
SIZE	CAGE CODE	DRAWING NO	-	
A3	-	C-2454917	-	
SCALE		SHEET	REV	
1:1		15 of 17	5	

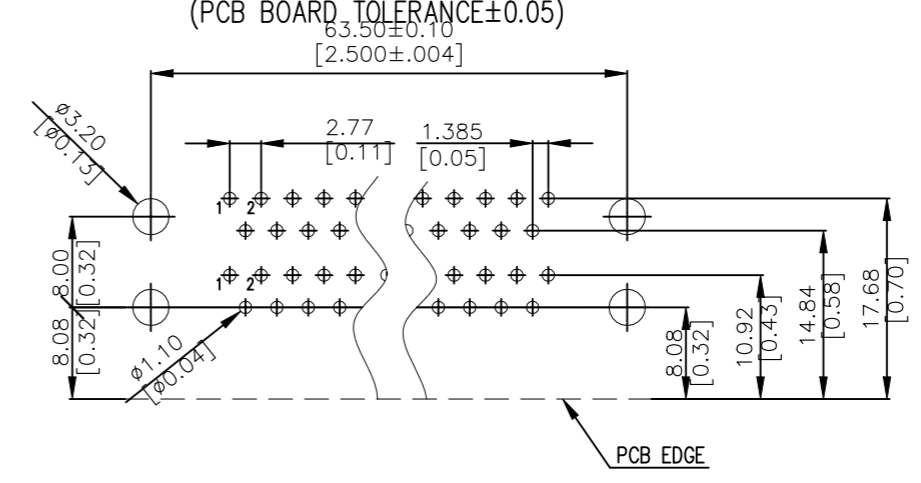
REVISIONS

P	LTR	DESCRIPTION	DATE	DWN	APVD
-	-	SEE SHEET 1	-	-	-

AS SHOWN 1-2454917-7



Recommended P.C.B Layout (Top Side)



THIS DRAWING IS A CONTROLLED DOCUMENT.

DIMENSIONS:	TOLERANCES UNLESS OTHERWISE SPECIFIED:
mm	
	0 PLC ± -
	1 PLC ± -
	2 PLC ± 0.25
	3 PLC ± -
	4 PLC ± -
	ANGLES ± -

MATERIAL	FINISH
-	-

DWN	JM	24MAY2023
CHK	DS	24MAY2023
APVD	WH	24MAY2023
PRODUCT SPEC	-	-
APPLICATION SPEC	-	-
WEIGHT	-	-

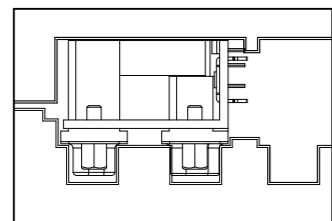


DUAL PORT D-SUB CONNECTOR

SIZE	CAGE CODE	DRAWING NO	RESTRICTED TO
A3	-	C-2454917	-

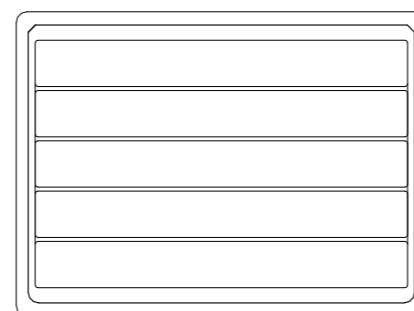
CUSTOMER DRAWING	SCALE 1:1	SHEET 16 OF 17	REV 5
------------------	-----------	----------------	-------

REVISIONS					
P	LTR	DESCRIPTION	DATE	DWN	APVD
	-	SEE SHEET 1	-	-	-



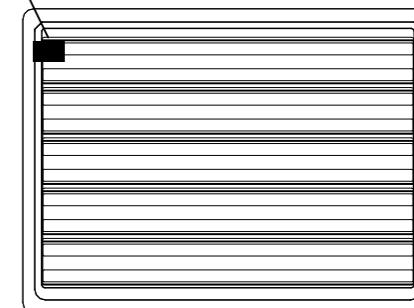
No.1

The products are packed in vacuum box,
Vacuum box size: SB-69A0(310*210*14mm)



No.2

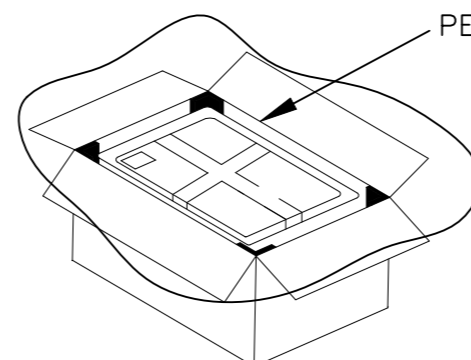
Cover the lid and packaging tape fixation



No.3

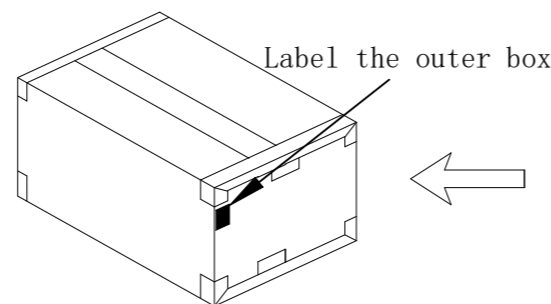
Quantity label

Stick the label on the top left corner
of the vacuum box



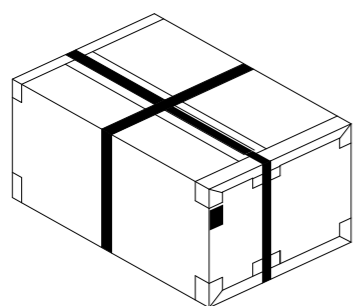
No.4

10 boxes for a tie, the top and
bottom of each piece of paper
guards, and then wrap PE film into
a cross shape



No.5

Inside the carton need to set waterproof
bag PE-10, and then the vacuum box into
the carton, add a packet of desiccant
and then sealed, placed around a paper corner
Outer box size: CTN-03TE
(35.5*28.5*30.0cm)



No.6
packing belt

Seal the box and stick the
label on the top left corner
of the side of the outer box

TE P/N	Pcs/Tray	Pcs/Box
1-2454917-1	20	200
1-2454917-2	35	350
1-2454917-3	35	350
1-2454917-4	25	250
1-2454917-5	25	250
1-2454917-6	20	200
1-2454917-7	20	200

- Instructions:
- Place the product into the vacuum box as per the product placement diagram;
 - Pay attention to the style of each label. Position and direction of consistency;
 - When playing the outer box packing tape need to pay attention to, play for the cross type.

THIS DRAWING IS A CONTROLLED DOCUMENT.		DWN JM 24MAY2023	TE Connectivity		
DIMENSIONS: mm		CHK DS 24MAY2023			
TOLERANCES UNLESS OTHERWISE SPECIFIED:		APVD WH 24MAY2023	NAME		
0 PLC ± -		PRODUCT SPEC			
1 PLC ± -		APPLICATION SPEC			
2 PLC ± 0.25		SIZE A3	CAGE CODE -	DRAWING NO C-2454917	RESTRICTED TO -
3 PLC ± -		WEIGHT -			
4 PLC ± -		CUSTOMER DRAWING			
ANGLES ± -		SCALE 1:1	SHEET 17 of 17	REV 5	
FINISH -					